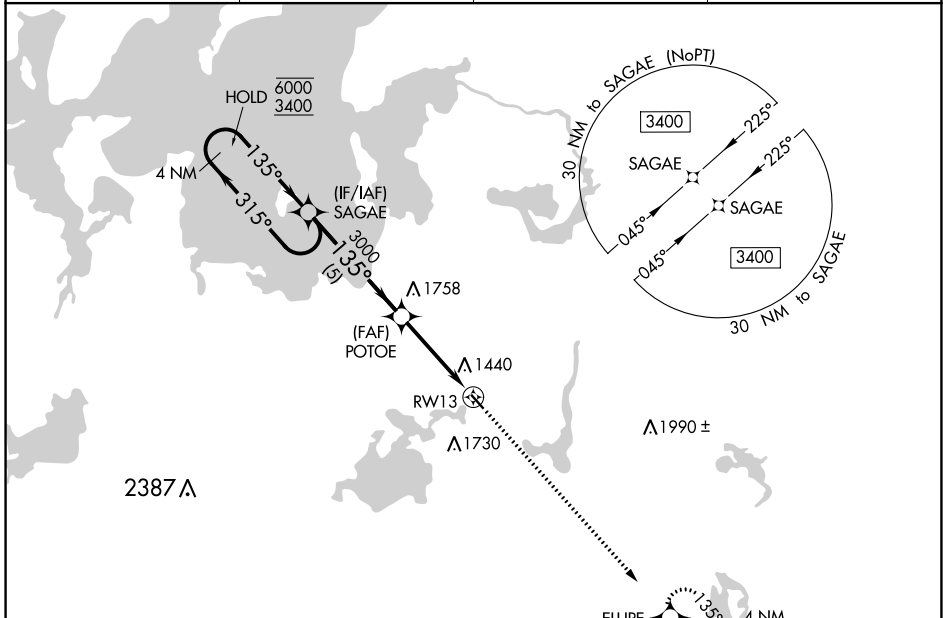


APP CRS 135°	Rwy Idg TDZE Apt Elev	3109 1337 1337
------------------------	-----------------------------	---

RNAV (GPS) RWY 13

LONGVILLE MUNI (XVG)

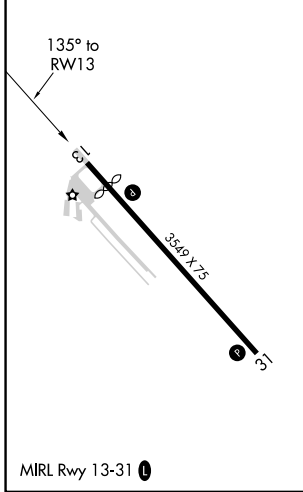
RNP APCH.		MISSED APPROACH: Climb to 3100 direct ELUPE and hold.	
<p>▼ Procedure NA at night.</p> <p>▲ Rwy 13 helicopter visibility reduction below 1 SM NA.</p>			
AWOS-3 118.275	MINNEAPOLIS CENTER 118.05 239.0	GCO 121.725	CTAF 122.90



NC-1, 22 FEB 2024 to 21 MAR 2024

NC-1, 22 FEB 2024 to 21 MAR 2024

ELEV 1337	D	TDZE 1337
-----------	----------	-----------



<p>VGSI and descent angles not coincident (VGSI Angle 4.00/TCH 19).</p>				3100	ELUPE
<p>4 NM Holding Pattern</p>				↑	✧
<p>6000 ← 315°</p> <p>3400 → 135°</p>		<p>135°</p>		<p>POTOE</p>	
		<p>3000</p>		<p>4.00° TCH 30</p>	
		<p>5 NM</p>		<p>3.9 NM</p>	
		<p>RWY 13</p>			
CATEGORY	A	B	C	D	
LNAV MDA	1820-1	483 (500-1)	NA		
C CIRCLING	1860-1 523 (600-1)	2080-1 743 (800-1)	NA		