

| | | |
|-------------|----------|-------------|
| APP CRS | Rwy Idg | 4702 |
| 296° | TDZE | 66 |
| | Apt Elev | 73 |

RNAV (GPS) RWY 28

BERMUDA DUNES (UDD)

| | |
|---|--|
| RNP APCH | MISSED APPROACH: Climb to 3300 via course 296° to AKEGE WP then right turn via course 298° to PSP VORTAC and hold. |
| <p>▼ Use Jacqueline Cochran Rgnl altimeter setting. Rwy 28 Straight-in and Circling minimums NA at night. Rwy 28 helicopter visibility reduction below 1 SM NA.</p> | |

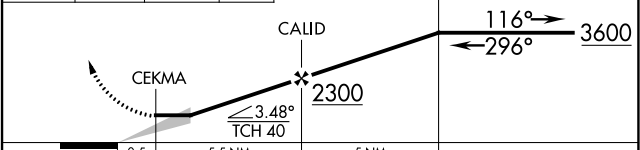
| | | |
|----------------------------|---|---------------------------------|
| TRM ASOS 118.325 | SOCAL APP CON * 135.275 251.1 | UNICOM 122.8 (CTAF) 0 |
|----------------------------|---|---------------------------------|



| | |
|---------|---------|
| ELEV 73 | TDZE 66 |
|---------|---------|

REIL Rwy 28
MIRL Rwy 10-28 0

| | | | |
|----------|----------|-----|--|
| 3300 | AKEGE | PSP | VGSI and descent angles not coincident (VGSI Angle 3.00/TCH 33). |
| crs 296° | crs 298° | | 4 NM Holding Pattern |



| CATEGORY | A | B | C | D |
|----------|--------------------------|--------------------------|-------------------------|----|
| LNAV MDA | 1020-1¼ 954 (1000-1¼) | 1020-1½ 954 (1000-1½) | 1020-3 954 (1000-3) | NA |
| CIRCLING | 1020-1¼ 947 (1000-1¼) | 1020-1½ 947 (1000-1½) | 1100-3 1027 (1100-3) | NA |

SW-3, 22 FEB 2024 to 21 MAR 2024

SW-3, 22 FEB 2024 to 21 MAR 2024