

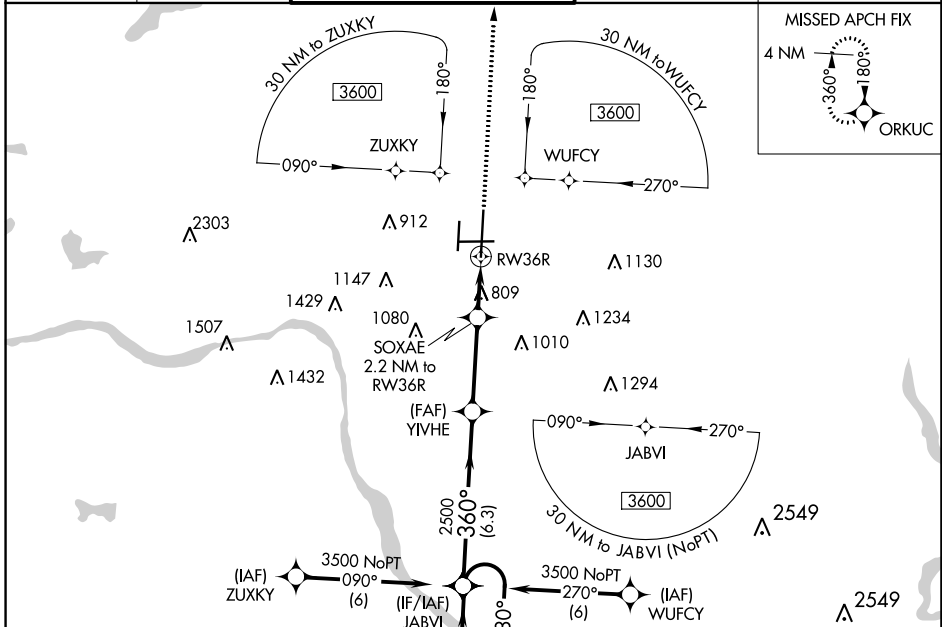
WAAS CH 82214 W36A	APP CRS 360°	Rwy ldg 10000 TDZE 650 Apt Elev 678
--	------------------------	--

RNAV (GPS) RWY 36R

TULSA INTL (TUL)

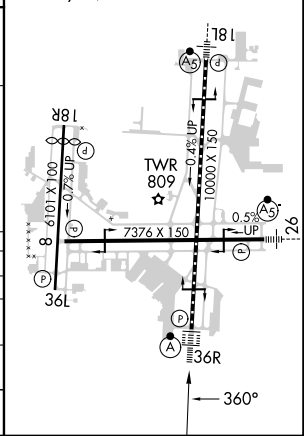
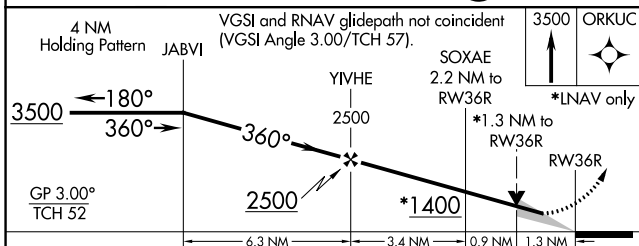
For uncompensated Baro-VNAV systems, LNAV/VNAV NA below -13°C (9°F) or above 54°C (130°F). Circling NA for Cat E south of Rwy 8-26. DME/DME RNP-0.3 NA. For inop ALSF-2, increase LPV Cat E visibility to RVR 4000, LNAV/VNAV all Cats visibility to 1½ mile, and LNAV Cats C/D/E visibility to 1¾ mile.	ALSF-2 	MISSED APPROACH: Climb to 3500 direct ORKUC and hold.

D-ATIS 124.9 377.2	TULSA APP CON 124.0 338.3	TULSA TOWER 121.2 310.8 (Rwys 18L-36R, 8-26) 118.7 257.8 (Rwy 18R-36L)	GND CON 121.9 348.6	CLNC DEL 134.05 284.7
------------------------------	-------------------------------------	--	-------------------------------	---------------------------------



ELEV 678		TDZE 650
----------	--	----------

TDZ/CL Rwy 36R
HIRL Rwys 8-26, 18L-36R and 18R-36L
REIL Rwys 8, 18R and 36L



CATEGORY	A	B	C	D	E
LPV DA	850/18		200 (200-½)		
LNAV/VNAV DA	1145-1¼		495 (500-1¼)		
LNAV MDA	1120/24		1120/50		470 (500-1)
CIRCLING	1120-1	1160-1	1520-2½	1520-2¾	1520-3
	442 (500-1)	482 (500-1)	842 (900-2½)	842 (900-2¾)	842 (900-3)

SC-1, 22 FEB 2024 to 21 MAR 2024

SC-1, 22 FEB 2024 to 21 MAR 2024