

TITUSVILLE, FLORIDA

AL-8000 (FAA)

23054

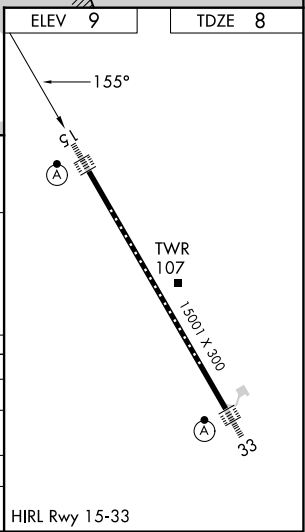
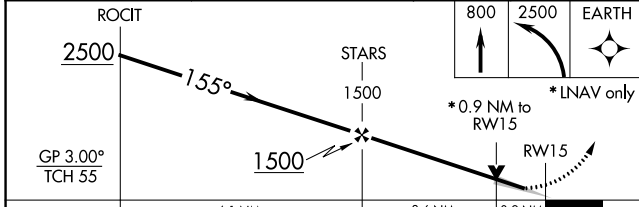
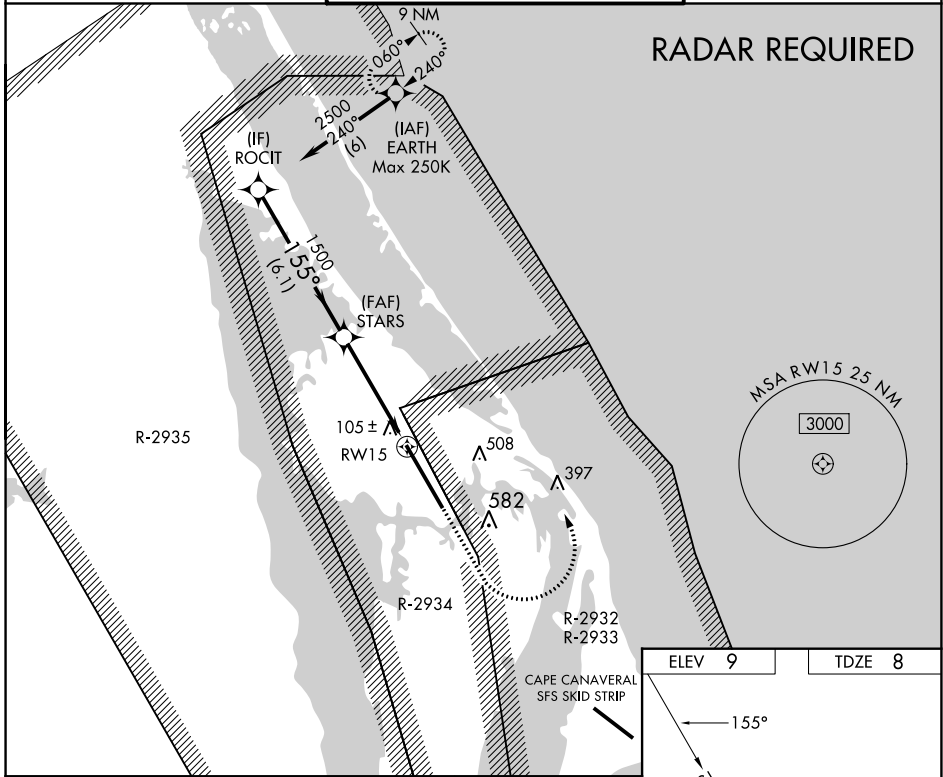
|  |                        |  |
|--|------------------------|--|
| WAAS<br>CH <b>50534</b><br><b>W15A</b> | APP CRS<br><b>155°</b> | Rwy Idg <b>15001</b><br>TDZE <b>8</b><br>Apt Elev <b>9</b> |
|--|------------------------|--|

# RNAV (GPS) RWY 15

SPACE FLORIDA LAUNCH AND LANDING FACILITY (TTS)

|  |         |   |
|--|---------|---|
| <p>For uncompensated Baro-VNAV systems, LNAV/VNAV NA below -15°C (5°F) or above 54°C (130°F). DME/DME RNP-0.3 NA. Inop table does not apply.</p> | ALS-F-2 | MISSED APPROACH: Climb to 800, then climbing left turn to 2500 direct EARTH and hold. |
|  |         |   |

|  |  |                          |
|--|--|--------------------------|
| ORLANDO APP CON<br><b>134.95 281.425</b> | NASA TOWER ★<br><b>128.55 (CTAF) 284.0</b> | GND CON<br><b>121.75</b> |
|--|--|--------------------------|



|              |                      |                      |                         |       |              |  |      |  |
|--------------|----------------------|----------------------|-------------------------|-------|--------------|--|------|--|
| ROCIT        | 2500                 |                      | STARS                   |       | 1500         |  | RW15 |  |
| GP 3.00°     | TCH 55               |                      |                         |       |              |  |      |  |
|              | 6.1 NM               |                      | 3.6 NM                  |       | 0.9 NM       |  |      |  |
| CATEGORY     | A                    | B                    | C                       | D     | E            |  |      |  |
| LPV DA       | 208-1                |                      | 200 (200-1)             |       |              |  |      |  |
| LNAV/VNAV DA | 286-1                |                      | 278 (300-1)             |       |              |  |      |  |
| LNAV MDA     | 360-1                |                      | 352 (400-1)             |       |              |  |      |  |
| CIRCLING     | 420-1<br>411 (500-1) | 460-1<br>451 (500-1) | 940-2¾<br>931 (1000-2¾) | 940-3 | 931 (1000-3) |  |      |  |

TITUSVILLE, FLORIDA  
Amdt 1A 25MAY17

SPACE FLORIDA LAUNCH AND LANDING FACILITY (TTS)  
28°37'N-80°42'W

# RNAV (GPS) RWY 15

SE-3, 22 FEB 2024 to 21 MAR 2024

SE-3, 22 FEB 2024 to 21 MAR 2024