

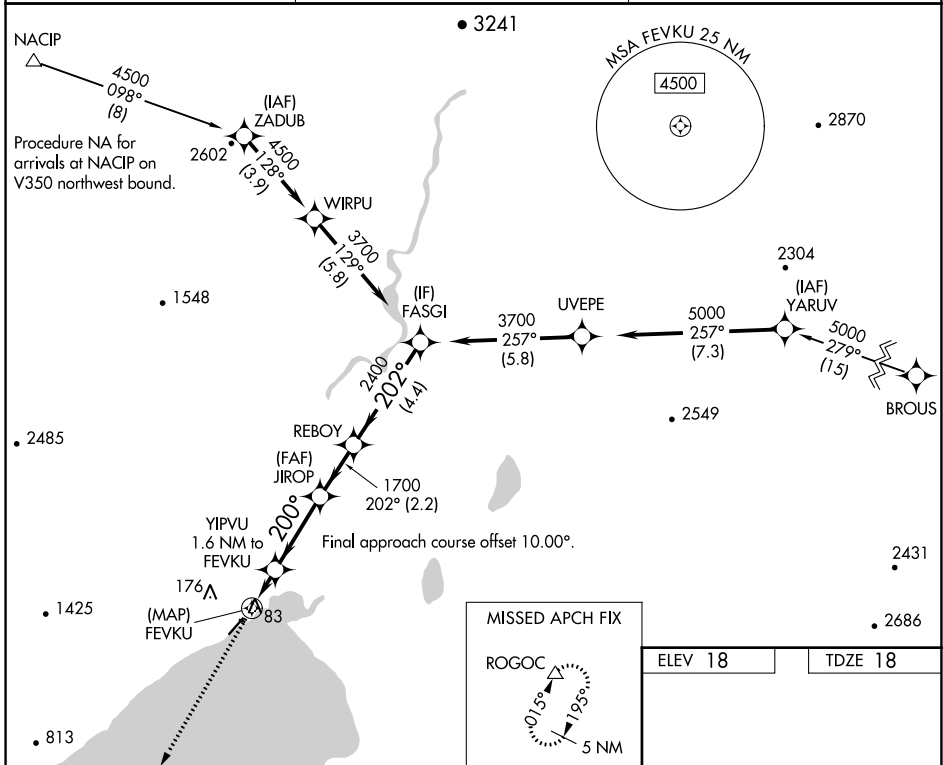
WAAS CH 72841 W21A	APP CRS 200°	Rwy Idg TDZE Apt Elev	4400 18 18
--	------------------------	-----------------------------	---------------------------------------

RNAV (GPS) RWY 21

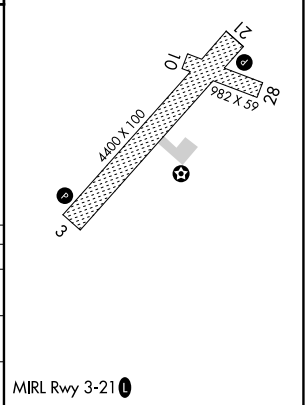
TOGIAK (TOG)(PATG)

<p>⚠ Circling NA northwest of Rwy 3-21. ⚠ Rwy 21 helicopter visibility reduction below 1 SM NA. DME/DME RNP-0.3 NA. Procedure NA at night.</p>	<p>MISSED APPROACH: Climb to 4400 direct ROGOC and hold, continue climb-in-hold to 4400.</p>
--	--

AWOS-3P 119.3	ANCHORAGE CENTER 132.75 282.35	CTAF 122.5
-------------------------	--	----------------------



4400 ↑ ROGOC △	VGSIs and descent angles not coincident (VGSi Angle 3.00/TCH 31).			
	FEVKU	YIPVU 1.6 NM to FEVKU	JIROP	FASGI
	720	200°	1700	2400
	3.00° TCH 40	200°	1700	3700
	0.5	1.6 NM	3.1 NM	2.2 NM
CATEGORY	A	B	C	D
LP MDA		340-1	322 (400-1)	
LNAV MDA		340-1	322 (400-1)	
C CIRCLING	400-1 382 (400-1)	480-1 462 (500-1)	480-1½ 462 (500-1½)	800-2½ 782 (800-2½)



AK, 25 JAN 2024 to 21 MAR 2024

AK, 25 JAN 2024 to 21 MAR 2024