

WAAS CH <b>78130</b> <b>W16A</b>	APP CRS <b>161°</b>	Rwy Idg TDZE Apt Elev	<b>3801</b> <b>70</b> <b>70</b>
--	------------------------	-----------------------------	---------------------------------------

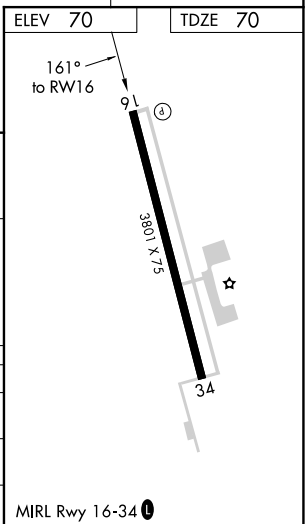
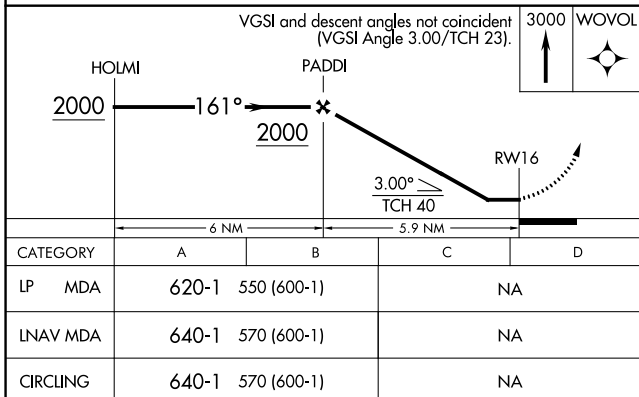
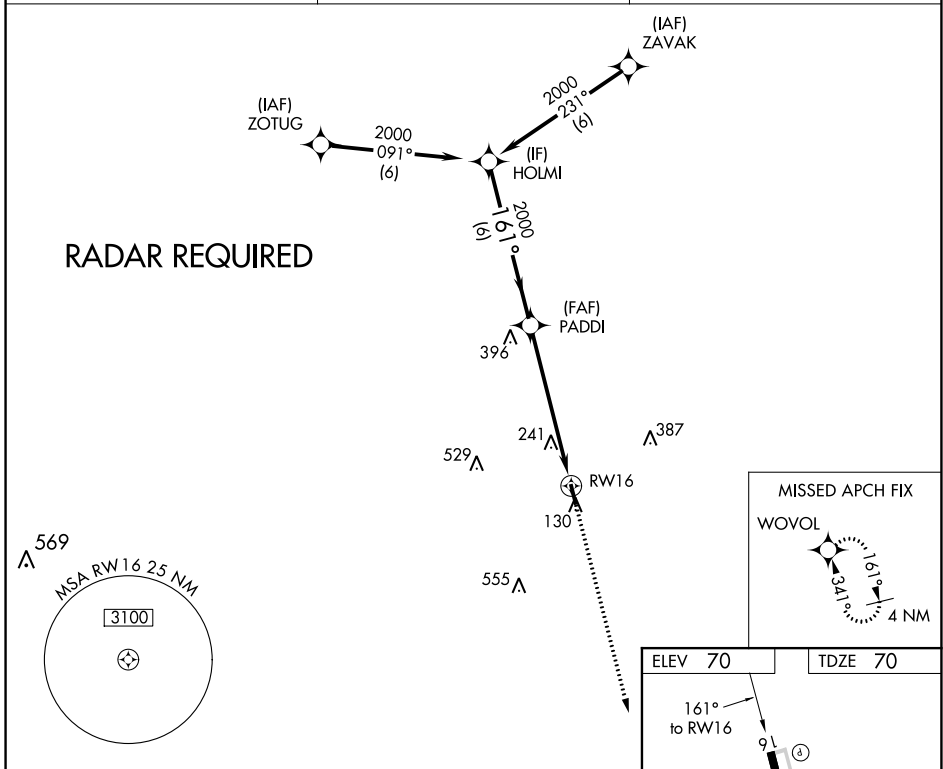
# RNAV (GPS) RWY 16

LIBERTY MUNI (T78)

**Procedure NA at night. Use George Bush Intcntl/Houston altimeter setting. DME/DME RNP-0.3 NA.**  
**Helicopter visibility reduction below 1 SM NA.**

**MISSED APPROACH: Climb to 3000 direct WOVOL and hold.**

AWOS-3PT <b>120.775</b>	HOUSTON APP CON <b>119.7 281.4</b>	CTAF <b>122.9</b>
----------------------------	---------------------------------------	----------------------



SC-5, 11 AUG 2022 to 08 SEP 2022

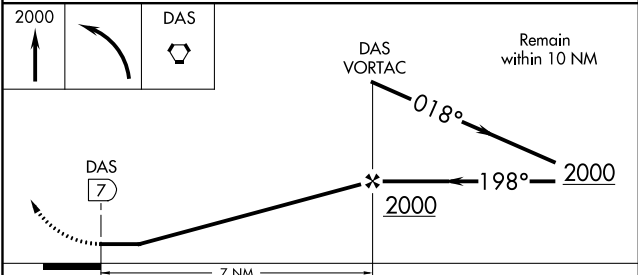
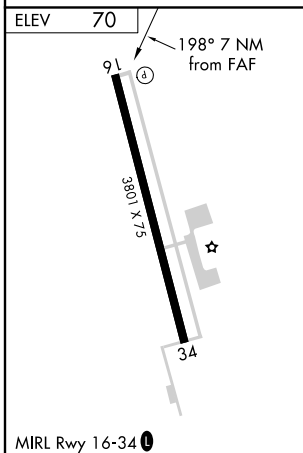
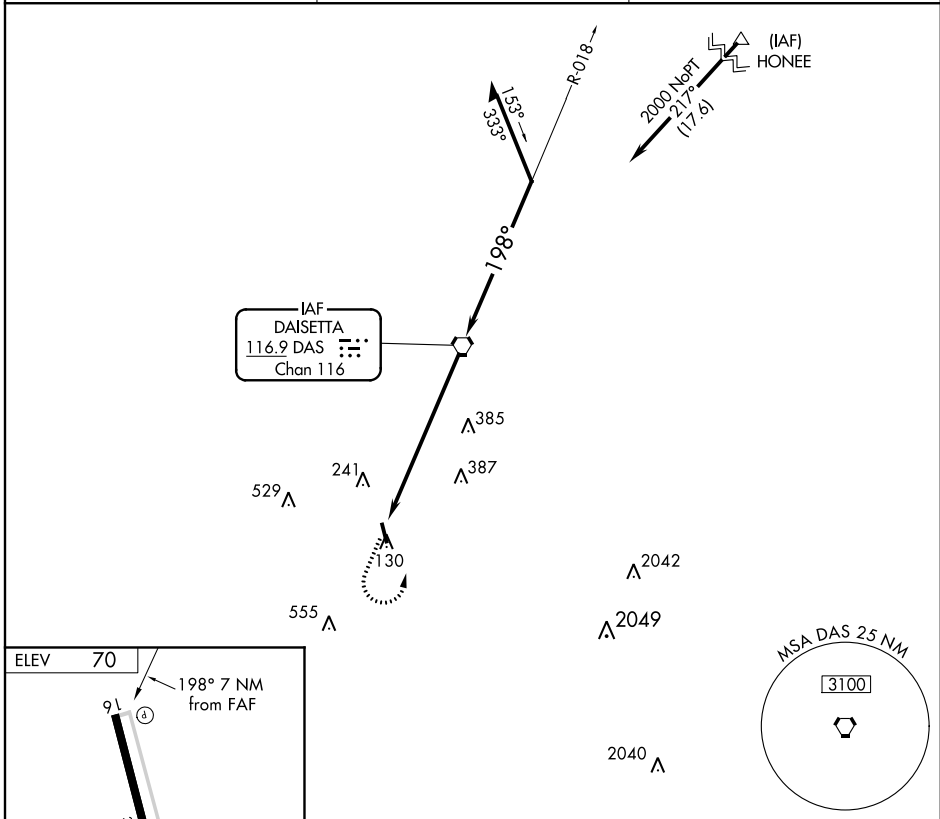
SC-5, 11 AUG 2022 to 08 SEP 2022

VORTAC DAS <b>116.9</b> Chan <b>116</b>	APP CRS <b>198°</b>	Rwy Idg TDZE Apt Elev	<b>N/A</b> <b>N/A</b> <b>70</b>
---	------------------------	-----------------------------	---------------------------------------

**VOR-A**  
LIBERTY MUNI (T78)

**NA** Use George Bush Intcnl/Houston altimeter setting. Procedure NA at night. Helicopter visibility reduction below 1 SM NA. MISSED APPROACH: Climb to 2000, then left turn direct DAS VORTAC.

AWOS-3PT <b>120.775</b>	HOUSTON APP CON <b>119.7 281.4</b>	CTAF <b>122.9 0</b>
----------------------------	---------------------------------------	------------------------



FAF to MAP 7 NM						CATEGORY		A	B	C	D
Knots	60	90	120	150	180	CIRCLING		600-1 530 (600-1)		NA	
Min:Sec	7:00	4:40	3:30	2:48	2:20						

SC-5, 11 AUG 2022 to 08 SEP 2022

SC-5, 11 AUG 2022 to 08 SEP 2022