

| | | | |
|--|------------------------|-----------------------------|---------------------------------------|
| WAAS CH 86917 W05A | APP CRS 049° | Rwy Idg TDZE Apt Elev | 5105 24 26 |
|--|------------------------|-----------------------------|---------------------------------------|

RNAV (GPS) RWY 5

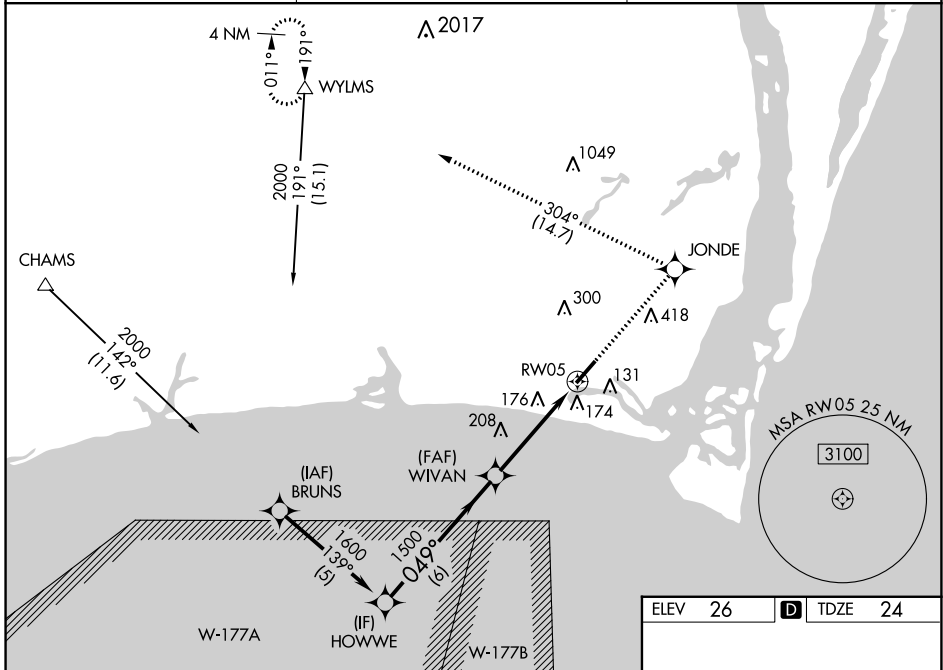
CAPE FEAR RGJL JETPORT/HOWIE FRANKLIN FLD (SUT)

RNP APCH - GPS.

⚠ Baro-VNAV NA when using Wilmington altimeter setting. For uncompensated Baro-VNAV systems, LNAV/VNAV NA below -15°C or above 54°C. Rwy 5 helicopter visibility reduction below 3/4 SM NA. When local altimeter setting not received, use Wilmington altimeter setting and increase LPV DA to 325 feet, increase LNAV/VNAV DA to 511 feet, increase all MDAs 60 feet and LNAV visibility Cat C 1/8 SM, and Circling visibility Cat C 1/4 SM. VDP NA when using Wilmington altimeter setting.

MISSED APPROACH:
Climb to 3000 direct JONDE and left turn on track 304° to WYLSMS and hold.

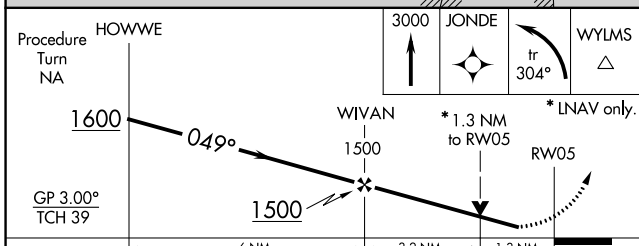
| | | |
|---------------------------|--|----------------------------------|
| AWOS-3P 124.175 | WILMINGTON APP CON * 118.25 284.65 | UNICOM 123.05 (CTAF) ① |
|---------------------------|--|----------------------------------|



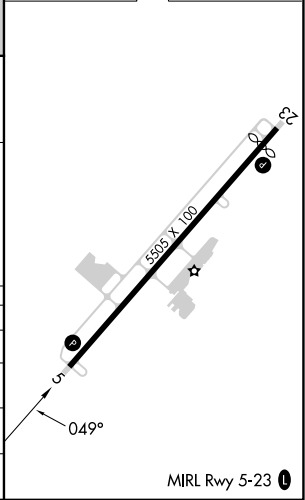
SE-2, 22 FEB 2024 to 21 MAR 2024

SE-2, 22 FEB 2024 to 21 MAR 2024

| | |
|---------|------------------|
| ELEV 26 | D TDZE 24 |
|---------|------------------|



| CATEGORY | A | B | C | D |
|--------------|----------------------|----------------------|------------------------------|----|
| LPV DA | 274-1 | 250 (300-1) | | NA |
| LNAV/VNAV DA | 460-1 1/2 | 436 (500-1 1/2) | | NA |
| LNAV MDA | 460-1 | 436 (500-1) | 460-1 1/4 436 (500-1 1/4) | NA |
| CIRCLING | 480-1 454 (500-1) | 520-1 494 (500-1) | 720-2 694 (700-2) | NA |



RNAV (GPS) RWY 5