

**KBREW ONE DEPARTURE**

(KBREW1.KBREW) 23334

AL-263 (FAA)

ST PAUL DOWNTOWN HOLMAN FLD (STP)

ST. PAUL, MINNESOTA

NC-1, 22 FEB 2024 to 21 MAR 2024

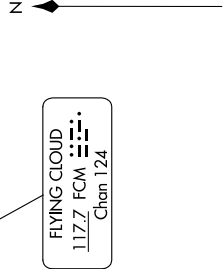
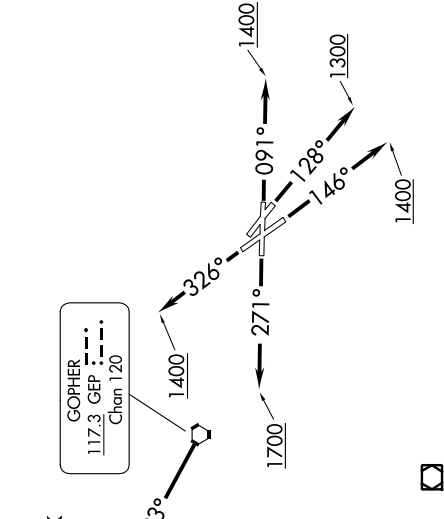
**TOP ALTITUDE:  
ASSIGNED BY ATC**

**FARGO**  
116.2 FAR  
Chan 109

**TAKEOFF MINIMUMS**

- Rwy 9: Standard with minimum climb of 340' per NM to 1300.
- Rwy 13: Standard with minimum climb of 235' per NM to 1500.
- Rwy 14: Standard.
- Rwy 27: 600-2 or standard with minimum climb of 442' per NM to 1500.
- Rwy 31: NA - Obstacles.
- Rwy 32: Standard with minimum climb of 340' per NM to 3000.

MINNEAPOLIS DEP CON  
121.2 335.65  
ATIS  
118.35  
CLNC DEL  
121.675  
ST. PAUL TOWER \*  
119.1 257.8



NOTE: RADAR required.  
NOTE: Chart not to scale.

**DEPARTURE ROUTE DESCRIPTION**

**TAKEOFF RUNWAY 9:** Climb heading 091° to 1400 for RADAR vectors to GEP VORTAC then on GEP R-293 to KBREW INT/GEP 55 DME, thence. . . .

**TAKEOFF RUNWAY 13:** Climb heading 128° to 1300 for RADAR vectors to GEP VORTAC then on GEP R-293 to KBREW INT/GEP 55 DME, thence. . . .

**TAKEOFF RUNWAY 14:** Climb heading 146° to 1400 for RADAR vectors to GEP VORTAC then on GEP R-293 to KBREW INT/GEP 55 DME, thence. . . .

**TAKEOFF RUNWAY 27:** Climb heading 271° to 1700 for RADAR vectors to GEP VORTAC then on GEP R-293 to KBREW INT/GEP 55 DME, thence. . . .

**TAKEOFF RUNWAY 32:** Climb heading 326° to 1400 for RADAR vectors to GEP VORTAC then on GEP R-293 to KBREW INT/GEP 55 DME, thence. . . .

. . . on transition or assigned route. Expect clearance to filed altitude/flight level 10 (ten) minutes after departure.

**FARGO TRANSITION (KBREW1.FAR):** From over KBREW on FAR R-116 to FAR VOR/DME.

**KBREW ONE DEPARTURE**

(KBREW1.KBREW) 01FEB18

ST. PAUL, MINNESOTA  
ST PAUL DOWNTOWN HOLMAN FLD (STP)

NC-1, 22 FEB 2024 to 21 MAR 2024