


WAAS CH 61213 W31A	APP CRS 313°	Rwy Idg TDZE 1020 Apt Elev 1031	7000
--	------------------------	---	-------------

RNAV (GPS) RWY 31

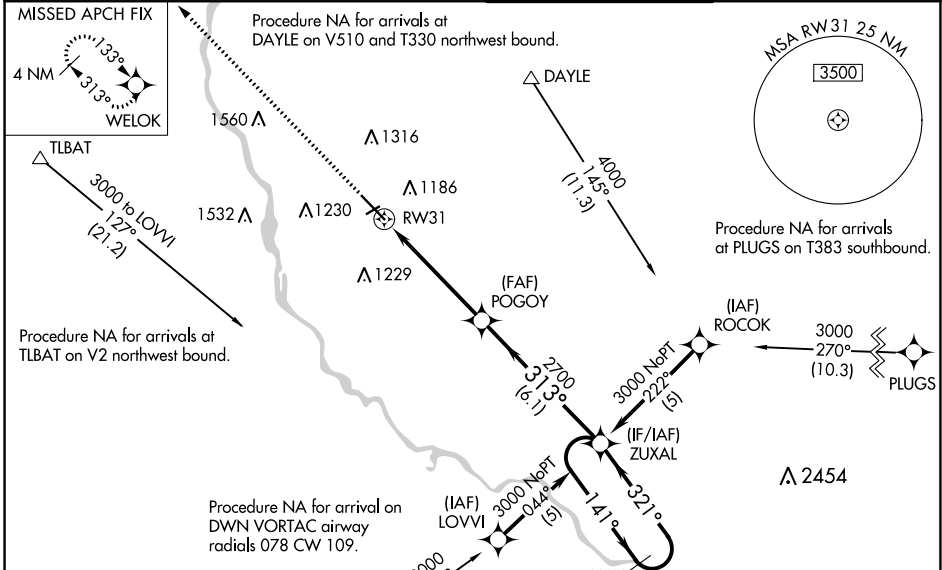
ST CLOUD RGNL (STC)

RNP APCH - GPS

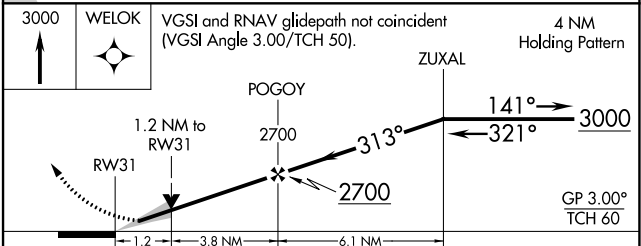
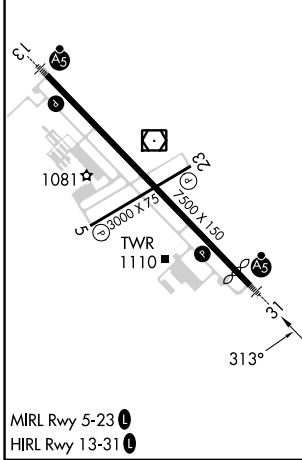
⚠ When local altimeter setting not received, use Little Falls altimeter setting: increase LPV DA to 1296 feet, LNAV/VNAV DA to 1455 feet and visibility LNAV/VNAV ¼ SM all Cats; increase all MDA 80 feet and visibility LNAV Cat C and D and Circling Cat C and D ¼ SM. For inop ALS when using Little Falls altimeter setting, increase LPV all Cats visibility to ¾ SM and LNAV Cat C/D visibility to 1¾ SM. For uncompensated Baro-VNAV systems, LNAV/VNAV NA below -17°C or above 46°C. Baro-VNAV and VDP NA when using Little Falls altimeter setting.

MALSRL
 MISSED APPROACH: Climb to 3000 direct WELOK and hold.

ATIS 119.375	MINNEAPOLIS CENTER 121.05 235.775	ST. CLOUD TOWER ★ 118.25 (CTAF) 0	GND CON 123.75
------------------------	---	---	--------------------------



ELEV 1031	D	TDZE 1020
-----------	----------	-----------



CATEGORY	A	B	C	D
LPV DA		1220-½	200 (200-½)	
LNAV/VNAV DA		1379-¾	359 (400-¾)	
LNAV MDA	1460-½	440 (500-½)	1460-¾	440 (500-¾)
CIRCLING	1500-1	469 (500-1)	1620-1½ 589 (600-1½)	1860-2¾ 829 (900-2¾)

NC-1, 22 FEB 2024 to 21 MAR 2024

NC-1, 22 FEB 2024 to 21 MAR 2024