

# WIPOR THREE ARRIVAL (RNAV)

NE-1, 22 FEB 2024 to 21 MAR 2024

## ARRIVAL ROUTE DESCRIPTION

- ALBANY TRANSITION (ALB.WIPOR3):
- HANCOCK TRANSITION (HNK.WIPOR3):
- HINGZ TRANSITION (HINGZ.WIPOR3):

From WIPOR on track 142° to ORW VOR/DME, then on track 129° to SAUGY.

Landing KPVD Rwys 5, 34: From SAUGY on track 129° to LAFAY, then on track 129°.

Expect radar vectors to final approach course.

From WIPOR on track 142° to ORW VOR/DME, then on track 055° to WAWIK, then on track 049° to SEABE.

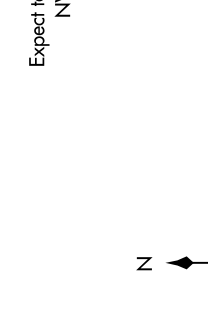
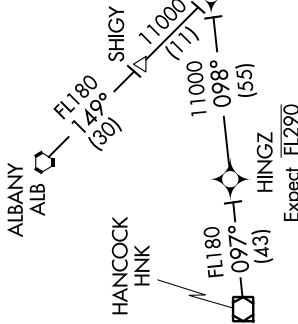
Landing KPVD Rwys 16, 23: From SAUGY on track 047°. Expect radar vectors to final approach course.

Then on track 047° to NOSUH, then on track 047°. Expect radar vectors to final approach course.

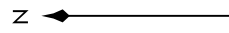
Landing KOGU, KUUU, KEWB, all rwys: From WIPOR on track 142° to ORW VOR/DME, then on track 129° to SAUGY, then on track 129° to LAFAY, then on track 129°. Expect radar vectors to destination airport and final approach course.

Landing KSFZ all rwys: From WIPOR on track 142° to ORW VOR/DME, then on track 129° to SAUGY, then on track 055° to WAWIK, then on track 049° to SEABE, then on track 047° to NOSUH, then on track 047°. Expect radar vectors to final approach course.

PROVIDENCE APP CON★  
 123.675 244.875  
 EWB ATIS  
 126.85  
 PVD D-ATIS  
 124.2



NOTE: RADAR required.  
 NOTE: RNAV 1.  
 NOTE: DME/DME/IRU or GPS required.



NOTE: Chart not to scale.

# WIPOR THREE ARRIVAL (RNAV)

(WIPOR. WIPOR3) 13NOV14

NE-1, 22 FEB 2024 to 21 MAR 2024