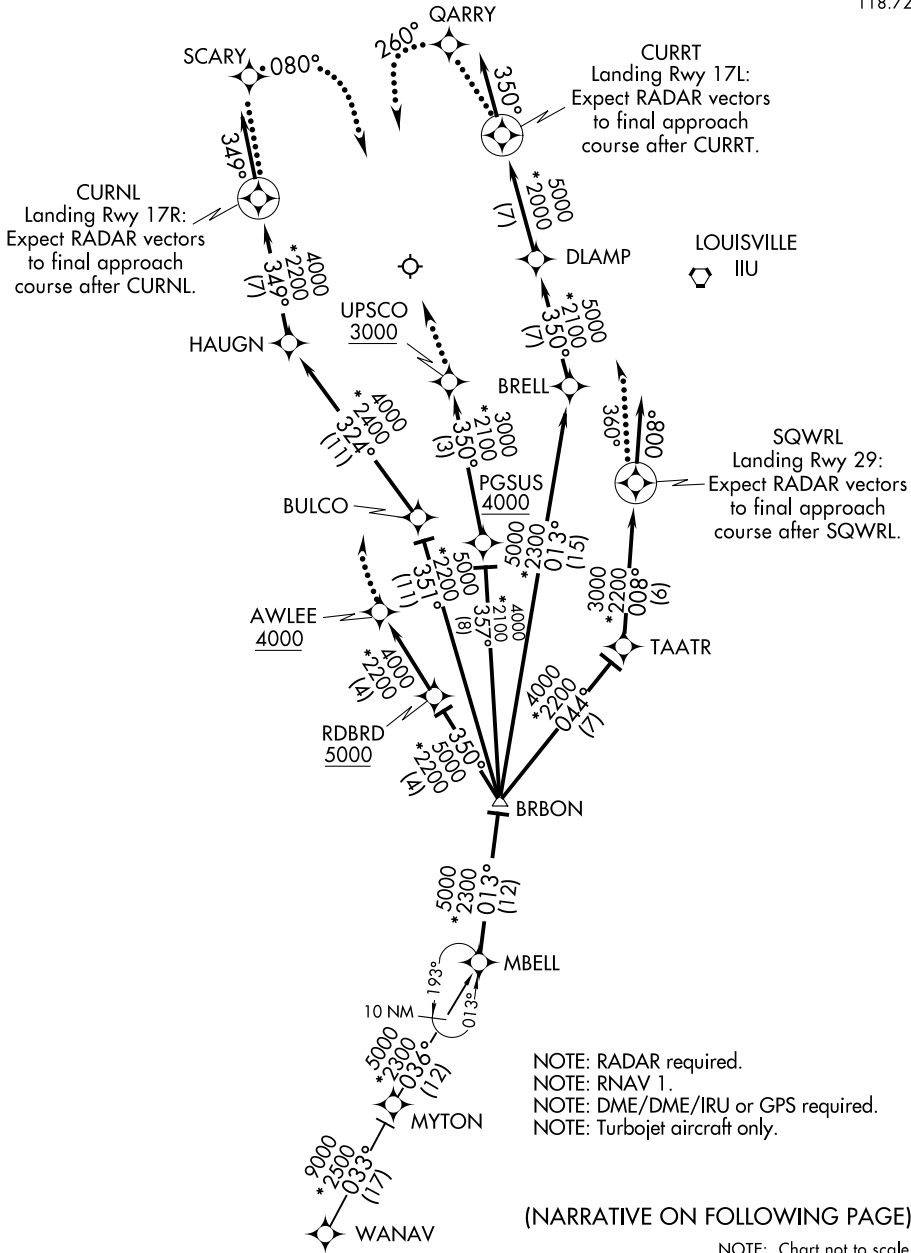


# MBELL FOUR ARRIVAL (RNAV)

LOUISVILLE APP CON  
132.075 327.0  
D-ATIS  
118.725



SE-1, 22 FEB 2024 to 21 MAR 2024

SE-1, 22 FEB 2024 to 21 MAR 2024

# MBELL FOUR ARRIVAL (RNAV)

# MBELL FOUR ARRIVAL (RNAV)

## ARRIVAL ROUTE DESCRIPTION

MYTON TRANSITION (MYTON.MBELL4):  
WANAV TRANSITION (WANAV.MBELL4):

From MBELL on track 013° to BRBON, then on assigned runway transition.

Landing Rwy 17L: From BRBON on track 013° to BRELL, then on track 350° to DLAMP, then on track 350° to CURRT, then on track 350°. Expect RADAR vectors to final approach course.

Landing Rwy 17R: From BRBON on track 351° to BULCO, then on track 324° to HAUGN, then on track 349° to CURNL, then on track 349°. Expect RADAR vectors to final approach course.

Landing Rwy 29: From BRBON on track 044° to TAATR, then on track 008° to SQWRL, then on track 008°. Expect RADAR vectors to final approach course.

Landing Rwy 35L: From BRBON on track 350° to cross RDBRD at or above 5000, then on track 350° to cross AWLEE at or above 4000. Expect ILS or LOC Rwy 35L.

Landing Rwy 35R: From BRBON on track 357° to cross PGSUS at or above 4000, then on track 350° to cross UPSCO at or above 3000. Expect ILS or LOC Rwy 35R.

### LOST COMMUNICATIONS:

Landing Rwy 17L: Track to CURRT, cross CURTT at 5000, then proceed direct QARRY, at QARRY fly heading 260°, maintain 5000, intercept and execute ILS or LOC Rwy 17L approach. If unable, proceed to IIIU VORTAC and hold, maintain 6000.

Landing Rwy 17R: Track to CURNL, cross CURNL at 4000, then proceed direct SCARY, at SCARY fly heading 080°, maintain 4000, intercept and execute ILS or LOC Rwy 17R approach. If unable, proceed to IIIU VORTAC and hold, maintain 6000.

Landing Rwy 29: Track to SQWRL, cross SQWRL at 3000, at SQWRL fly heading 360°, intercept and execute LOC Rwy 29 approach. If unable, proceed to IIIU VORTAC and hold, maintain 6000.

Landing Rwy 35L: Track to AWLEE, cross AWLEE at or above 4000, intercept and execute ILS or LOC Rwy 35L approach. If unable, proceed to IIIU VORTAC and hold, maintain 6000.

Landing Rwy 35R: Track to UPSCO, cross UPSCO at or above 3000, intercept and execute ILS or LOC Rwy 35R approach. If unable, proceed to IIIU VORTAC and hold, maintain 6000.

SE-1, 22 FEB 2024 to 21 MAR 2024

SE-1, 22 FEB 2024 to 21 MAR 2024