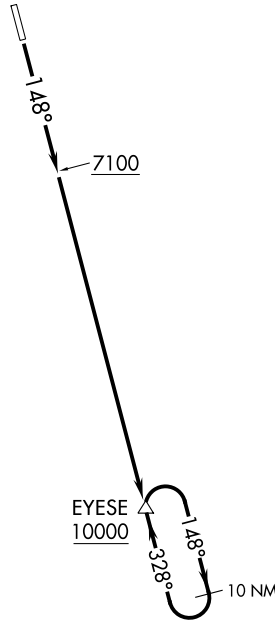


AWOS-A
118.575
CTAF
122.8
SEATTLE CENTER
123.95 290.55



NW-1, 22 FEB 2024 to 21 MAR 2024

NW-1, 22 FEB 2024 to 21 MAR 2024

NOTE: RNAV 1 - GPS.

TAKEOFF MINIMUMS

Rwy 33: NA-Obstacles.

Rwy 15: Standard with a minimum climb of 582' per NM to 7100.

(NOTES CONTINUED ON FOLLOWING PAGE)

NOTE: Chart not to scale.



DEPARTURE ROUTE DESCRIPTION

TAKEOFF RUNWAY 15: Climb on heading 148° to 7100, then direct EYese. Continue climb in EYese holding pattern to cross EYese at or above MEA for route of flight.

TAKEOFF OBSTACLE NOTES

Rwy 15: Tree 19' from DER, 333' left of centerline 2618' MSL.

Tree, lighting beginning 21' from DER, 77' left of centerline, up to 2668' MSL.

Lighting 40' from DER, 77' right of centerline, 3' AGL/2607' MSL.

Trees beginning 93' from DER, 300' right of centerline, up to 2640' MSL.

Trees, vehicle on road beginning 132' from DER, 193' left of centerline, up to 66' AGL/2673' MSL.

Trees beginning 318' from DER, 438' right of centerline, up to 2653' MSL.

Trees beginning 420' from DER, 99' right of centerline, up to 2663' MSL.

Trees beginning 460' from DER, 259' left of centerline, up to 2675' MSL.

Trees beginning 580' from DER, 153' left of centerline, up to 2699' MSL.

Trees beginning 588' from DER, 4' right of centerline, up to 2667' MSL.

Trees beginning 749' from DER, 13' left of centerline, up to 2700' MSL.

Trees beginning 1324' from DER, 63' right of centerline, up to 2691' MSL.

Trees beginning 1477' from DER, 299' left of centerline, up to 2705' MSL.

Trees beginning 1550' from DER, 116' left of centerline, up to 2707' MSL.

Trees beginning 2337' from DER, 47' right of centerline, up to 2693' MSL.

Trees beginning 2581' from DER, 204' left of centerline, up to 2711' MSL.

Trees beginning 2778' from DER, 111' left of centerline, up to 2713' MSL.

Trees beginning 2973' from DER, 172' left of centerline, up to 2722' MSL.

Trees beginning 3049' from DER, 53' left of centerline, up to 105' AGL/2725' MSL.

Tree 3453' from DER, 102' right of centerline, 103' AGL/2704' MSL.

Trees beginning 3532' from DER, 176' right of centerline, up to 110' AGL/2712' MSL.

Tree 1.1 NM from DER, 2303' left of centerline, 2784' MSL.

Tree 1.1 NM from DER, 2206' left of centerline, 2799' MSL.

Trees beginning 1.1 NM from DER, 2132' left of centerline, up to 2818' MSL.

Trees beginning 1.2 NM from DER, 2092' left of centerline, up to 2823' MSL.

Trees beginning 1.2 NM from DER, 1639' left of centerline, up to 2828' MSL.

Trees beginning 1.3 NM from DER, 2024' left of centerline, up to 2834' MSL.

Trees beginning 1.3 NM from DER, 1817' left of centerline, up to 2836' MSL.

Trees beginning 1.3 NM from DER, 1759' left of centerline, up to 2849' MSL.

Trees beginning 1.3 NM from DER, 1665' left of centerline, up to 2866' MSL.

Trees beginning 1.4 NM from DER, 1619' left of centerline, up to 2883' MSL.

Trees beginning 1.4 NM from DER, 1669' left of centerline, up to 2888' MSL.

Trees beginning 1.4 NM from DER, 1776' left of centerline, up to 2890' MSL.

Tree 1.4 NM from DER, 2651' left of centerline, 2892' MSL.

Trees beginning 1.4 NM from DER, 1655' left of centerline, up to 2899' MSL.

Trees beginning 1.4 NM from DER, 1490' left of centerline, up to 2916' MSL.

Trees beginning 1.4 NM from DER, 1390' left of centerline, up to 2929' MSL.

Trees beginning 1.4 NM from DER, 2110' left of centerline, up to 2941' MSL.

Trees beginning 1.4 NM from DER, 1488' left of centerline, up to 2942' MSL.

Trees beginning 1.5 NM from DER, 1350' left of centerline, up to 2943' MSL.

Trees beginning 1.5 NM from DER, 1482' left of centerline, up to 2953' MSL.

Trees beginning 1.5 NM from DER, 1374' left of centerline, up to 2965' MSL.

Tree 1.5 NM from DER, 2935' right of centerline, 2846' MSL.

Trees beginning 1.5 NM from DER, 1185' left of centerline, up to 2975' MSL.

Tree 1.5 NM from DER, 2756' right of centerline, 2858' MSL.

Trees beginning 1.6 NM from DER, 2586' right of centerline, up to 63' AGL/2873' MSL.

Trees beginning 1.6 NM from DER, 929' left of centerline, up to 2979' MSL.

Trees beginning 1.7 NM from DER, 2361' left of centerline, up to 3007' MSL.

Trees beginning 1.9 NM from DER, 2782' left of centerline, up to 3154' MSL.

Trees beginning 2.2 NM from DER, 2154' left of centerline up to 3325' MSL.

Trees beginning 2.4 NM from DER, 2511' left of centerline up to 3340' MSL.

NW-1, 22 FEB 2024 to 21 MAR 2024

NW-1, 22 FEB 2024 to 21 MAR 2024