

WAAS CH <b>49104</b> <b>W25A</b>	APP CRS <b>250°</b>	Rwy Idg TDZE Apt Elev	<b>5100</b> <b>1311</b> <b>1318</b>
--	------------------------	-----------------------------	---

# RNAV (GPS) RWY 25

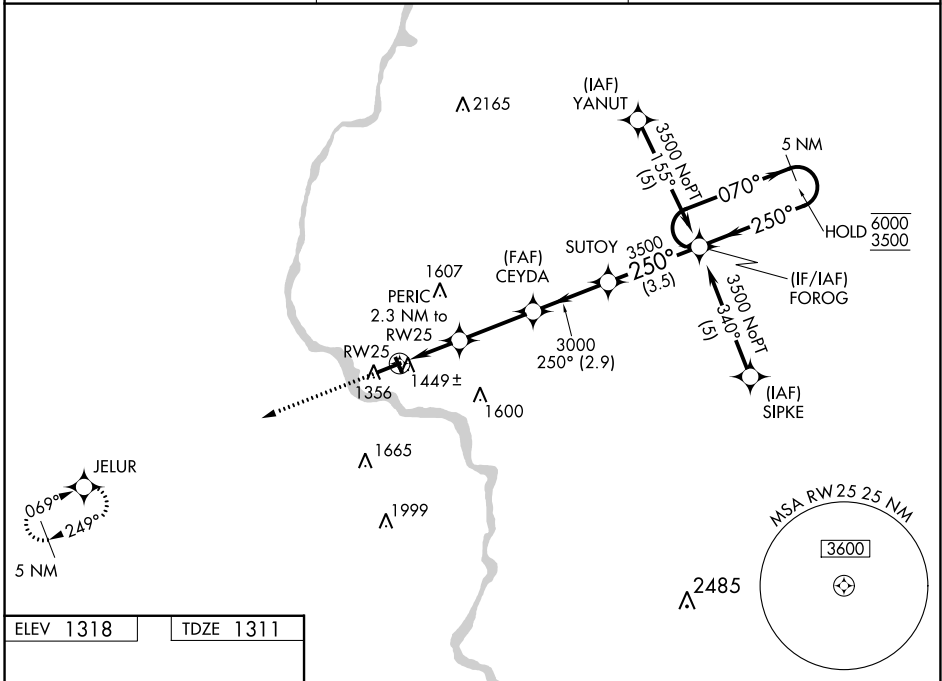
MERRILL MUNI (R.R.L.)

RNP APCH - GPS.

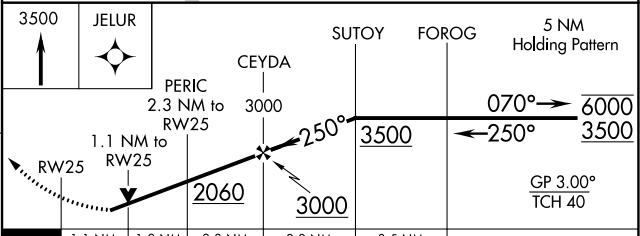
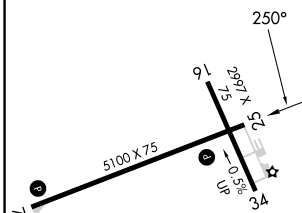
**⚠** Circling Rwy 16, 34 NA at night. Rwy 25 helicopter visibility reduction below  $\frac{3}{4}$  SM NA. For uncompensated Baro-VNAV systems, LNAV/VNAV NA below -17°C or above 54°C.

MISSED APPROACH: Climb to 3500 direct JELUR and hold.

AWOS-3 <b>119.925</b>	MINNEAPOLIS CENTER <b>124.4 317.7</b>	UNICOM <b>122.8 (CTAF)</b> <b>📶</b>
--------------------------	--	--



ELEV <b>1318</b>	TDZE <b>1311</b>
------------------	------------------



CATEGORY	A	B	C	D
LPV DA	1640-1	329 (400-1)		NA
LNAV/VNAV DA	1719-1 $\frac{1}{8}$	408 (500-1 $\frac{1}{8}$ )		NA
LNAV MDA	1700-1	389 (400-1)	1700-1 $\frac{1}{8}$ 389 (400-1 $\frac{1}{8}$ )	NA
<b>📶</b> CIRCLING	1760-1 442 (500-1)	1780-1 462 (500-1)	1920-1 $\frac{3}{4}$ 602 (700-1 $\frac{3}{4}$ )	NA

REIL Rwy 7 and 25 **📶**  
MIRL Rwy 16-34 and 7-25 **📶**

EC-3, 22 FEB 2024 to 21 MAR 2024

EC-3, 22 FEB 2024 to 21 MAR 2024