

WAAS CH 63241 W33A	APP CRS 326°	Rwy Idg 4350 TDZE 142 Apt Elev 148
--	------------------------	---

RNAV (GPS) RWY 33

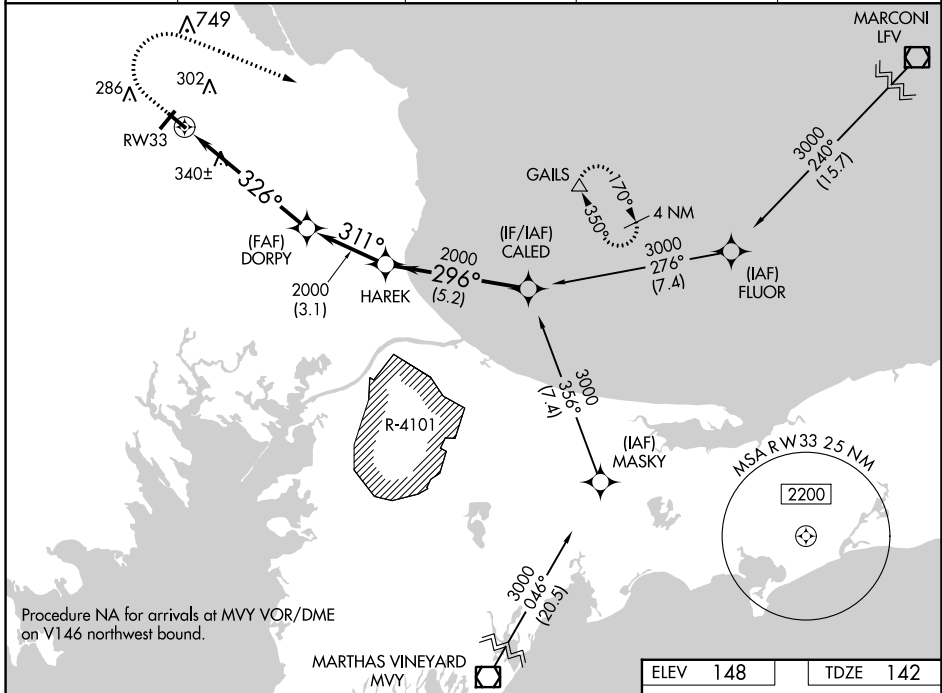
PLYMOUTH MUNI (PYM)

RNP APCH - GPS.

V Circling Rwy 15, 24 NA at night. Rwy 33 helicopter visibility reduction below $\frac{3}{4}$ SM NA.
A For uncompensated Baro-VNAV systems, LNAV/VNAV NA below -18°C or above 54°C.

MISSED APPROACH: Climb to 700 then climbing right turn to 3000 direct GAILS and hold.

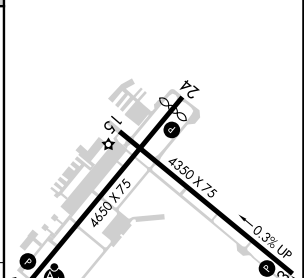
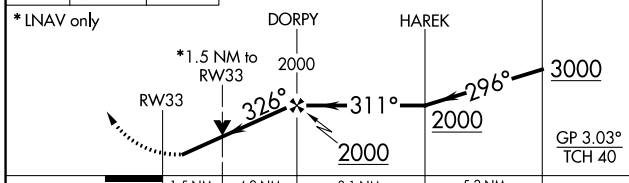
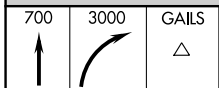
ASOS 135.625	BOSTON APP CON * 118.2 284.6	CLINC DEL 127.75	UNICOM 122.725 (CTAF)	122.9 0
------------------------	--	----------------------------	---------------------------------	----------------



Procedure NA for arrivals at MVY VOR/DME on V146 northwest bound.

MARSHAS VINEYARD MVY

ELEV 148	TDZE 142
-----------------	-----------------



CATEGORY	A	B	C	D
LPV DA	393- $\frac{3}{4}$	251 (300- $\frac{3}{4}$)		NA
LNAV/VNAV DA	486-1	344 (400-1)		NA
LNAV MDA	660-1	518 (600-1)	660- $1\frac{3}{8}$ 518 (600- $1\frac{3}{8}$)	NA
C CIRCLING	660-1	512 (600-1)	760- $1\frac{3}{4}$ 612 (700- $1\frac{3}{4}$)	NA

REIL Rwy 24 **0**
 MIRL Rwy 6-24 and 15-33 **0**

NE-1, 22 FEB 2024 to 21 MAR 2024

NE-1, 22 FEB 2024 to 21 MAR 2024