

| | | | |
|--|------------------------|-----------------------------|---|
| WAAS CH 56440 W06A | APP CRS 058° | Rwy Idg TDZE Apt Elev | 3396 574 575 |
|--|------------------------|-----------------------------|---|

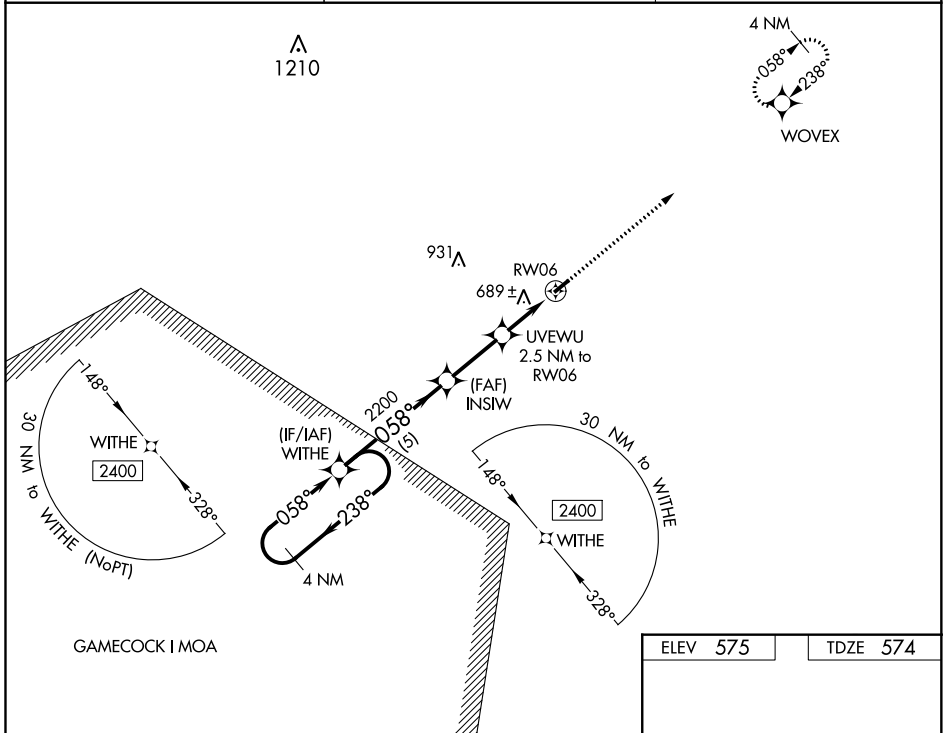
RNAV (GPS) RWY 6

PAGELAND (PYG)

Baro-VNAV NA. DME/DME RNP-0.3 NA. Use Charlotte/Monroe Exec altimeter setting. When Charlotte/Monroe Exec altimeter not received, use Charlotte/Douglas Intl altimeter setting and increase LPV DA to 943 feet and all visibilities 1/8 SM. Increase LNAV/VNAV DA to 1139 feet and all visibilities 1/4 SM. Increase all MDA 60 feet.

NA MISSED APPROACH: Climb to 2400 direct WOVEX and hold.

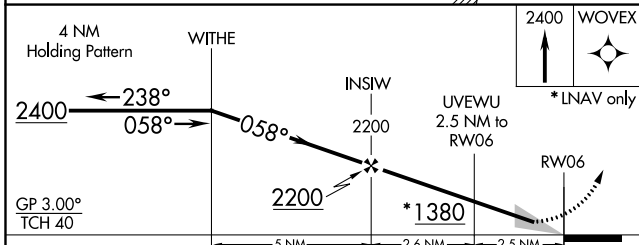
| | | |
|----------------------------|--|------------------------|
| EQY ASOS 135.775 | CHARLOTTE APP CON 120.05 307.8 | (CTAF) 122.9 |
|----------------------------|--|------------------------|



SE-2, 22 FEB 2024 to 21 MAR 2024

SE-2, 22 FEB 2024 to 21 MAR 2024

| | |
|----------|----------|
| ELEV 575 | TDZE 574 |
|----------|----------|



| CATEGORY | A | B | C | D |
|-----------------|------------|-----------------|---|----|
| LPV DA | 889-1 1/8 | 315 (400-1 1/8) | | NA |
| LNAV/VNAV DA | 1085-1 1/8 | 511 (600-1 1/8) | | NA |
| LNAV MDA | 1020-1 | 446 (500-1) | | NA |
| CIRCLING | 1100-1 1/8 | 525 (600-1 1/8) | | NA |

