

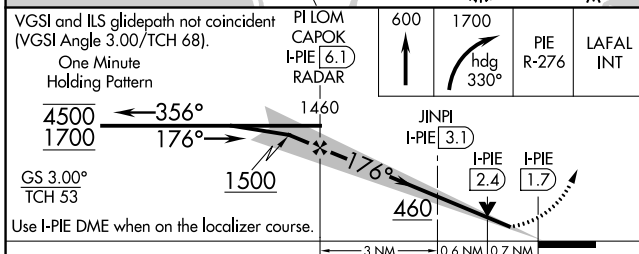
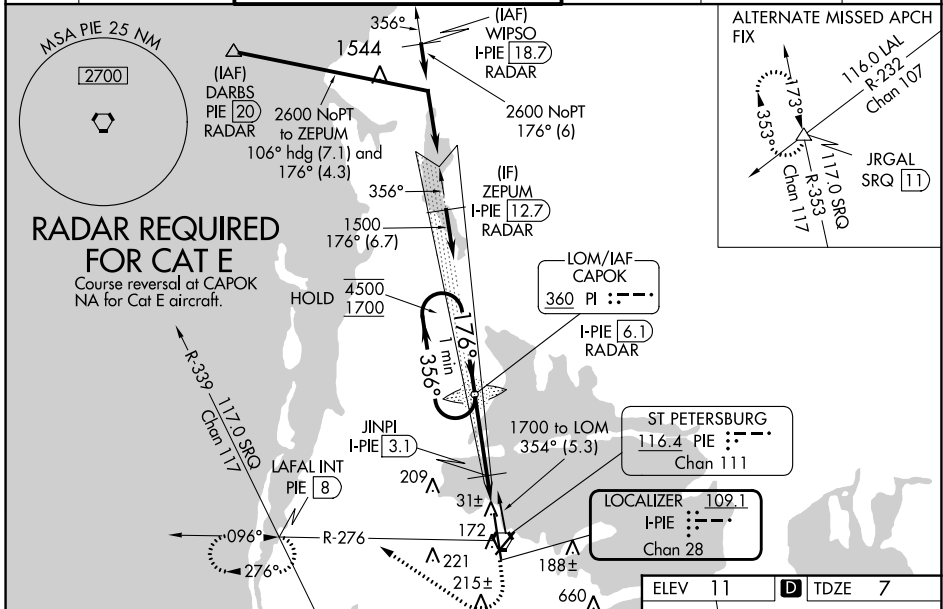
LOC/DME I-PIE 109.1 Chan 28	APP CRS 176°	Rwy Idg TDZE Apt Elev	9180 7 11
---	------------------------	-----------------------------	--------------------------------------

ILS or LOC RWY 18

ST PETE-CLEARWATER INTL (PIE)

DME, RADAR, or ADF required.		MALSR	MISSED APPROACH: Climb to 600 then climbing right turn to 1700 on heading 330° and PIE VORTAC R-276 to LAFAL INT/PIE VORTAC 8 DME and hold, continue climb-in-hold to 1700.
<p>▼ Circling Rwy 22 NA at night. For inop ALS, increase S-ILS 18 Cat E visibility to RVR 4000 and S-LOC 18 Cat E visibility to 1$\frac{3}{8}$ SM.</p> <p>▲ JINPI FIX MINIMUMS: For inop ALS, increase S-LOC 18 Cats C, D, and E visibility to RVR 4500.</p>			

ATIS 134.5	TAMPA APP CON 125.3 316.05	ST PETERSBURG-CLEARWATER TOWER ★ 118.3 (CTAF) 0 257.8	GND CON 121.9 348.6	CLNC DEL 120.6 350.2	UNICOM 122.95
----------------------	--------------------------------------	---	-------------------------------	--------------------------------	-------------------------



ELEV 11	TDZE 7
TDZ/CL Rwy 18 1 HIRL Rwy 18-36 1 MIRL Rwy 4-22 1 REIL Rws 4 and 22	
TWR 172 81 2700 X 150 8000 X 150 36	
FAF to MAP 4.4 NM	
Knots	60 90 120 150 180
Min:Sec	4:24 2:56 2:12 1:46 1:28

CATEGORY	A	B	C	D	E
S-ILS 18	207/18 200 (200- $\frac{1}{2}$)				
S-LOC 18	460/24	453 (500- $\frac{1}{2}$)	460/45 453 (500- $\frac{7}{8}$)		
CIRCLING	520-1	509 (600-1)	640-1 $\frac{3}{4}$ 629 (700-1 $\frac{3}{4}$)	680-2 669 (700-2)	960-3 949 (1000-3)
JINPI FIX MINIMUMS					
S-LOC 18	300/24 293 (300- $\frac{1}{2}$)				
CIRCLING	520-1	509 (600-1)	640-1 $\frac{3}{4}$ 629 (700-1 $\frac{3}{4}$)	680-2 669 (700-2)	960-3 949 (1000-3)

SE-3, 22 FEB 2024 to 21 MAR 2024

SE-3, 22 FEB 2024 to 21 MAR 2024