

WAAS CH <b>69536</b> <b>W22A</b>	APP CRS <b>218°</b>	Rwy ldg TDZE Apt Elev	<b>3700</b> <b>354</b> <b>354</b>
--	------------------------	-----------------------------	---

# RNAV (GPS) RWY 22

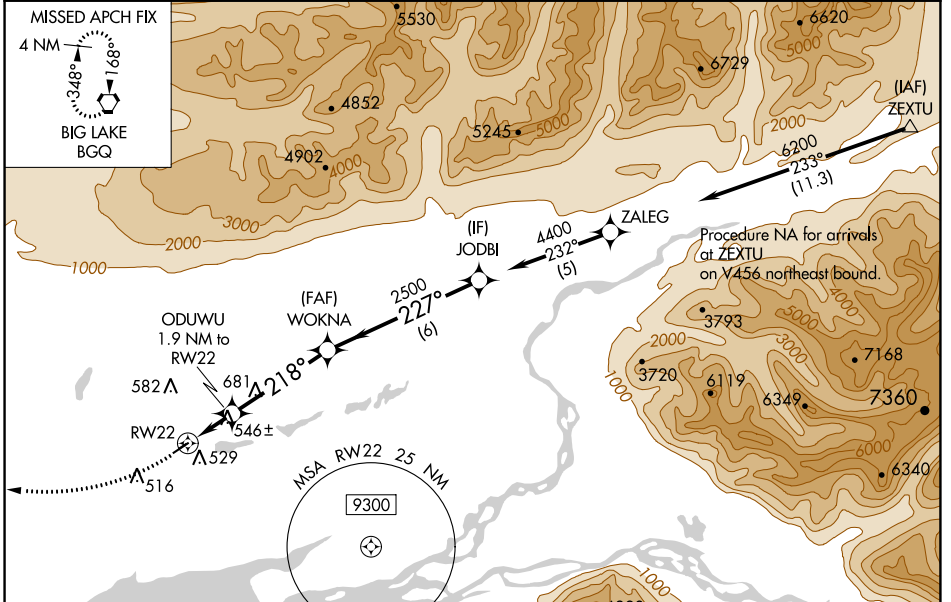
WASILLA (IYS) (PAWS)

RNP APCH.

**⚠** Circling NA to Rwy 4S and 22S. Baro-VNAV and VDP NA when using Palmer altimeter setting. Rwy 22 helicopter visibility reduction below  $\frac{3}{4}$  SM NA. For uncompensated Baro-VNAV systems, LNAV/VNAV NA below  $-25^{\circ}\text{C}$  or above  $54^{\circ}\text{C}$ . When local altimeter setting not received, use Palmer altimeter setting and increase all DA 46 feet, MDA 60 feet and all visibilities  $\frac{1}{8}$  mile.

MISSED APPROACH:  
Climb to 1000 then climbing right turn to 3000 direct BGQ VORTAC and hold.

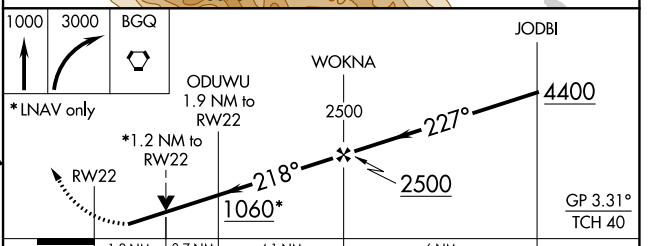
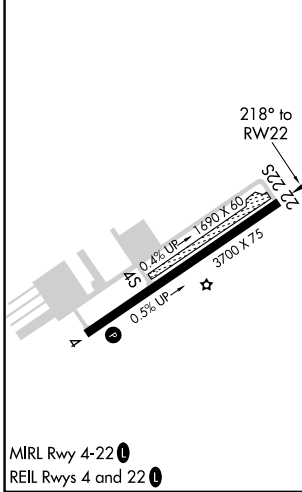
AWOS-3P <b>135.25</b>	ANCHORAGE APP CON <b>119.1 363.2</b>	CTAF <b>122.8</b>
--------------------------	---	----------------------



AK, 25 JAN 2024 to 21 MAR 2024

AK, 25 JAN 2024 to 21 MAR 2024

ELEV 354	TDZE 354
----------	----------



CATEGORY	A	B	C	D
LPV DA	604- $\frac{3}{4}$	250 (300- $\frac{3}{4}$ )		NA
LNAV/VNAV DA	821-1 $\frac{1}{2}$	467 (500-1 $\frac{1}{2}$ )		NA
LNAV MDA	800-1	446 (500-1)		NA
<b>C</b> CIRCLING	1000-1	646 (700-1)		NA

WAAS CH <b>53636</b> <b>W04A</b>	APP CRS <b>038°</b>	Rwy Idg TDZE Apt Elev	<b>3700</b> <b>352</b> <b>354</b>
--	------------------------	-----------------------------	---

# RNAV (GPS) RWY 4

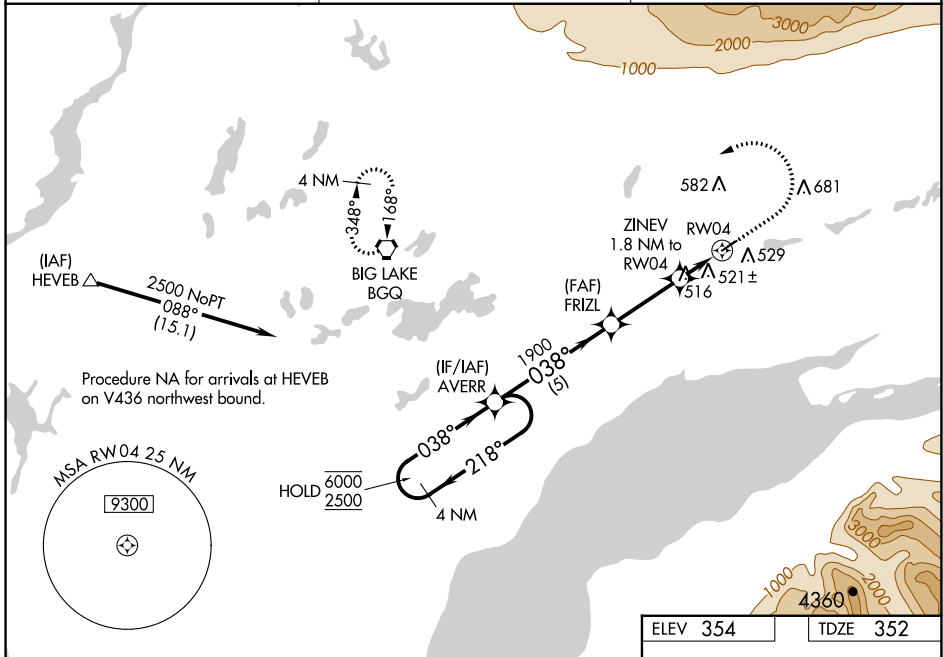
WASILLA (IYS) (PAWS)

RNP APCH.

**▼** Circling NA to Rwy 4S and 22S. Baro-VNAV and VDP NA when using Palmer altimeter setting. For uncompensated Baro-VNAV systems, LNAV/VNAV NA below -20°C or above 54°C. When local altimeter setting not received, use Palmer altimeter setting and increase all DA 46 feet, all MDA 60 feet and all visibilities ¼ mile.

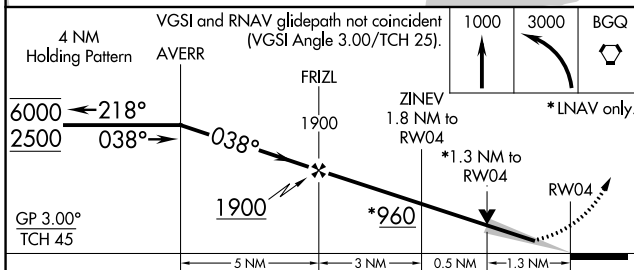
**MISSED APPROACH:** Climb to 1000 then climbing left turn to 3000 direct BGQ VORTAC and hold.

AWOS-3P <b>135.25</b>	ANCHORAGE APP CON <b>119.1 363.2</b>	CTAF <b>122.8</b>
--------------------------	---	----------------------



AK, 25 JAN 2024 to 21 MAR 2024

AK, 25 JAN 2024 to 21 MAR 2024



CATEGORY	A	B	C	D
LPV DA	602-3/4	250 (300-3/4)		NA
LNAV/VNAV DA	828-1 5/8	476 (500-1 1/8)		NA
LNAV MDA	780-1	428 (500-1)		NA
<b>C</b> CIRCLING	1000-1	646 (700-1)		NA

