

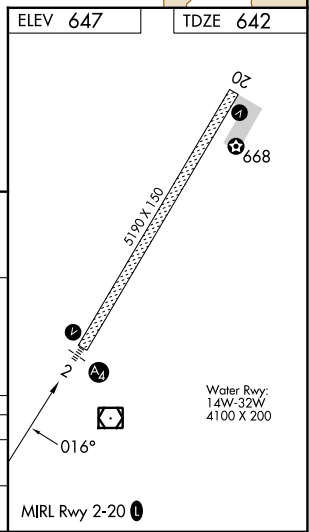
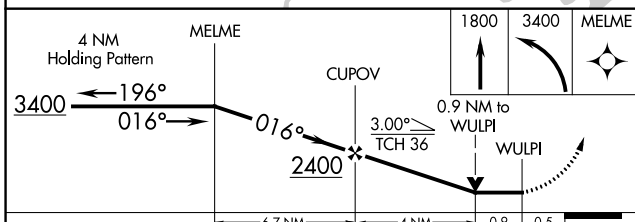
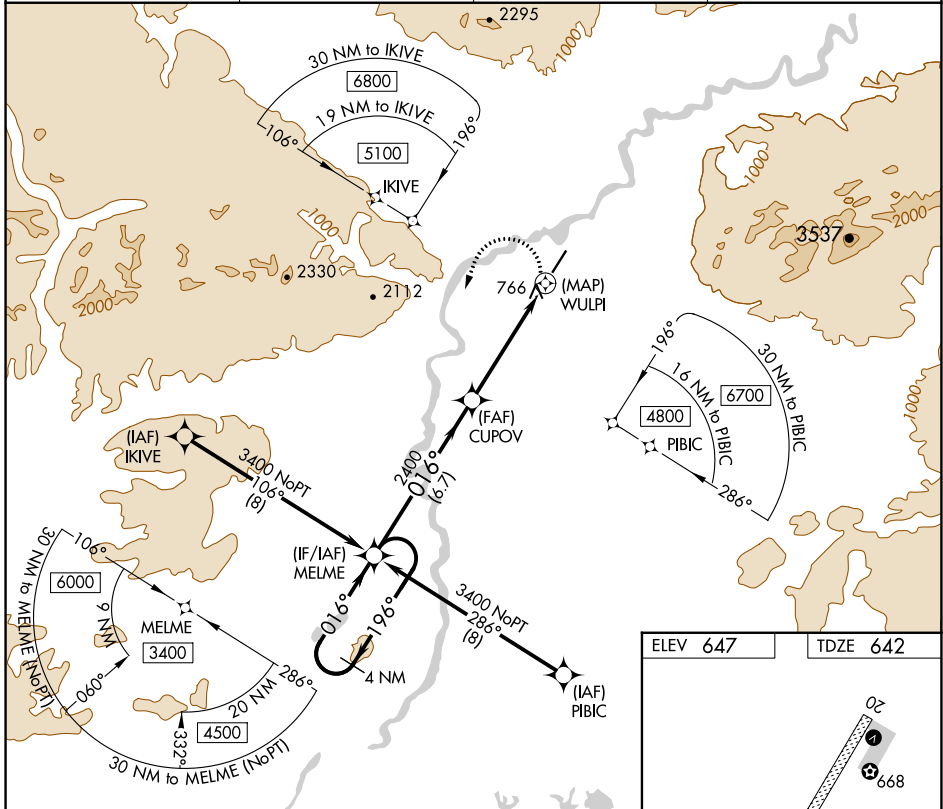
APP CRS	Rwy Idg	<b>5190</b>
<b>016°</b>	TDZE	<b>642</b>
	Apt Elev	<b>647</b>

# RNAV (GPS) RWY 2

BETTLES(BTT)(PABT)

RNP APCH.	MALS	MISSED APPROACH: (Do not exceed 230K until MELME) Climb to 1800 then climbing left turn to 3400 direct MELME and hold.
<p>▼ Inoperative table does not apply. Circling NA east of Rwy 2-20.</p> <p>▲ For inop ALS, increase Cat C/D visibility to 1 3/4 SM. Rwy 2 helicopter visibility reduction below 3/4 SM NA.</p> <p>⚡ -45°C</p>		

ASOS <b>135.45</b>	ANCHORAGE CENTER <b>124.6 352.0</b>	FAIRBANKS RADIO <b>122.2</b>	CTAF <b>122.9</b>
-----------------------	--	---------------------------------	----------------------



CATEGORY	A	B	C	D
LNVA MDA	1100-1 458 (500-1)			
CIRCLING	1100-1 453 (500-1)	1320-2 673 (700-2)	1320-2 673 (700-2 1/4)	1320-2 673 (700-2 1/4)

AK, 25 JAN 2024 to 21 MAR 2024

AK, 25 JAN 2024 to 21 MAR 2024

# RNAV (GPS) RWY 20

BETTLES(BTT)(PABT)

APP CRS	Rwy Idg	<b>5190</b>
<b>191°</b>	TDZE	<b>647</b>
	Apt Elev	<b>647</b>

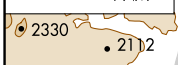
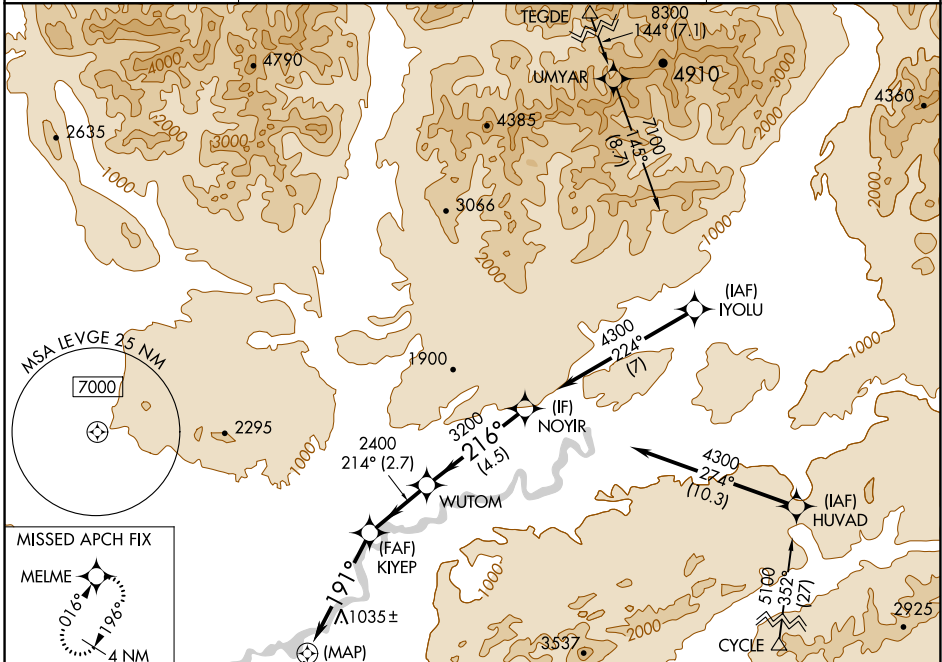
RNP APCH.

**⚠** Circling NA east of Rwy 2-20. Rwy 20 helicopter visibility reduction below 3/4 SM NA.

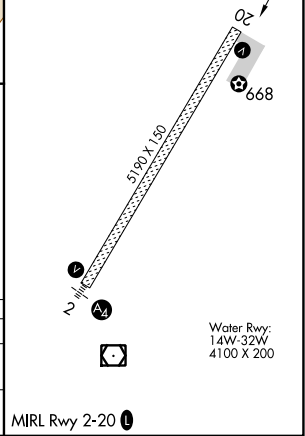
**❄** -45°C

MISSED APPROACH: Climb to 3200 direct SIYOD and on track 197° to MELME and hold.

ASOS	ANCHORAGE CENTER	FAIRBANKS RADIO	CTAF
<b>135.45</b>	<b>124.6 352.0</b>	<b>122.2</b>	<b>122.9 0</b>



ELEV 647	TDZE 647
----------	----------



3200	SIYOD	tr 197°	MELME		NOYIR
				1.4 NM to LEVGE	
				≤ 3.00° TCH 52	
	LEVGE		KIYEP	WUTOM	NOYIR
	191°		214°	216°	4300
			2400	3200	
	0.4	1.4 NM	3.5 NM	2.7 NM	4.5 NM

CATEGORY	A	B	C	D
LNVA MDA	1300-1 653 (700-1)		1300-1 7/8 653 (700-1 7/8)	
CIRCLING	1300-1 653 (700-1)		1320-2 673 (700-2)	1320-2 1/4 673 (700-2 1/4)

MIRL Rwy 2-20 0

AK, 25 JAN 2024 to 21 MAR 2024

AK, 25 JAN 2024 to 21 MAR 2024

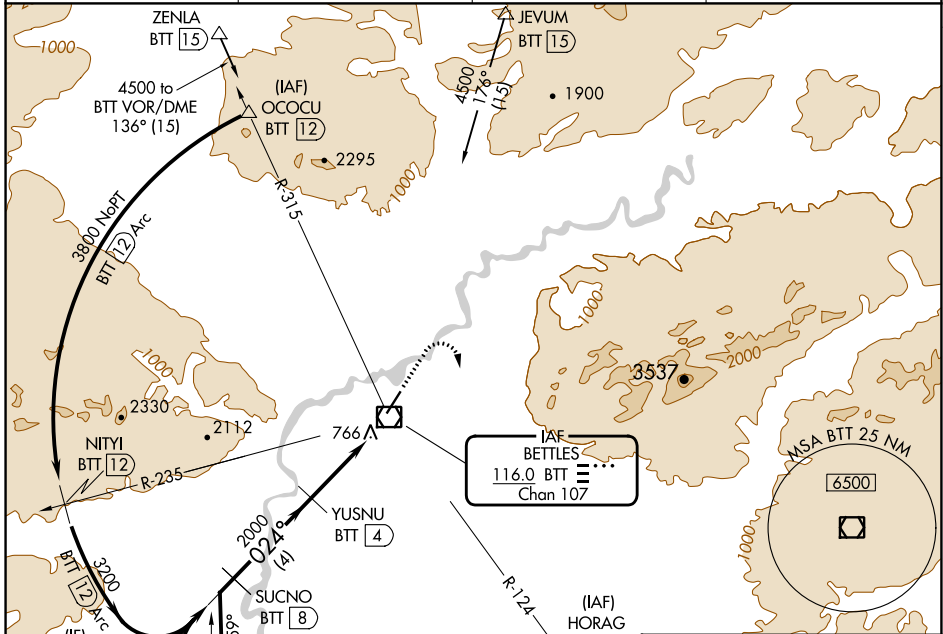
VOR/DME BTT	APP CRS	Rwy Idg	5190
116.0	024°	TDZE	642
Chan 107		Apt Elev	647

# VOR RWY 2

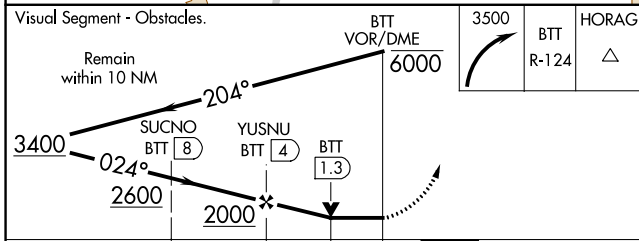
BETTLES (BTT)(PABT)

DME required.	MALS	MISSED APPROACH: Climbing right turn to 3500 on BTT VOR/DME R-124 to HORAG/BTT 12 DME and hold, continue climb-in-hold to 3500.
<p>▼ Rwy 2 helicopter visibility reduction below 3/4 SM NA. Circling NA east of Rwy 2-20. Inoperative table does not apply to Cats A/B. For inop ALS, increase S-2 Cat C/D visibility to 1 3/4 SM.</p> <p>⚠ -45°C</p>		

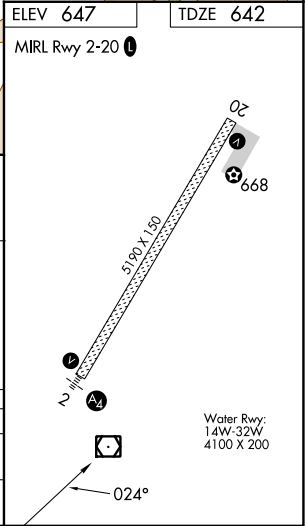
ASOS	ANCHORAGE CENTER	FAIRBANKS RADIO	CTAF
135.45	124.6 352.0	122.2	122.9 0



ELEV 647	TDZE 642
MIRL Rwy 2-20	



CATEGORY	A	B	C	D
S-2	1100-1	458 (500-1)		
CIRCLING	1100-1	453 (500-1)	1320-2 673 (700-2)	1320-2 1/4 673 (700-2 1/4)



AK, 25 JAN 2024 to 21 MAR 2024

AK, 25 JAN 2024 to 21 MAR 2024