

WAAS CH <b>72936</b> <b>W01A</b>	APP CRS <b>012°</b>	Rwy Idg <b>6250</b> TDZE <b>456</b> Apt Elev <b>458</b>
--	------------------------	---

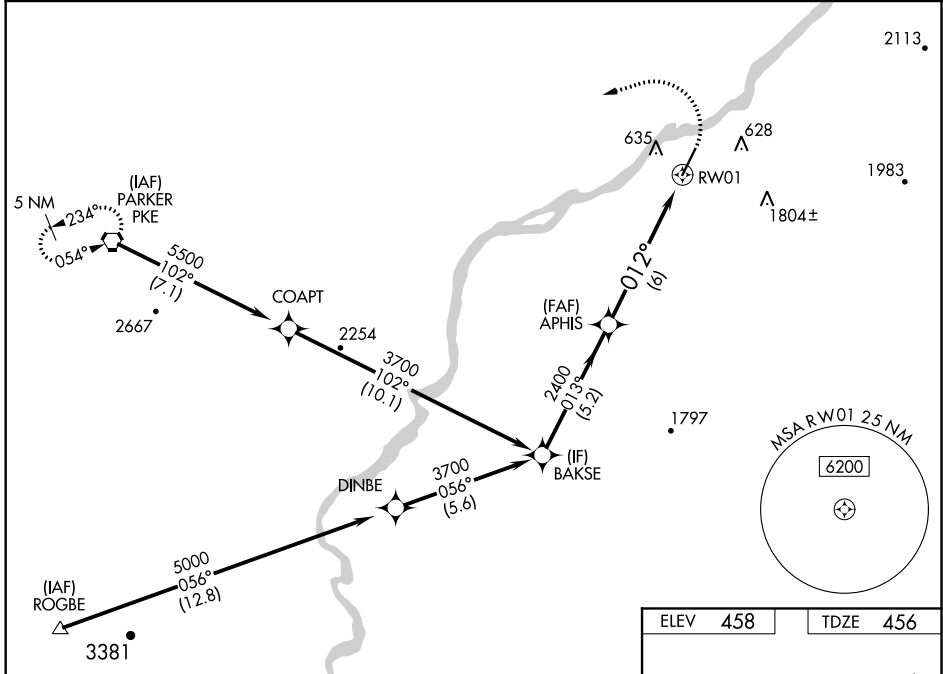
# RNAV (GPS) RWY 1

AVI SUQUILLA (P2 $\emptyset$ )

**⚠** For uncompensated Baro-VNAV systems, LNAV/VNAV NA below -15°C (5°F) or above 54°C (130°F). DME/DME RNP-0.3 NA. Baro-VNAV and VDP NA when using Blythe altimeter setting. When local altimeter setting not received, use Blythe altimeter setting: increase all DA 98 feet and all MDA 100 feet; increase LPV all Cats and LNAV/VNAV all Cats visibility  $\frac{3}{8}$  mile, and LNAV Cat C visibility  $\frac{1}{4}$  mile.

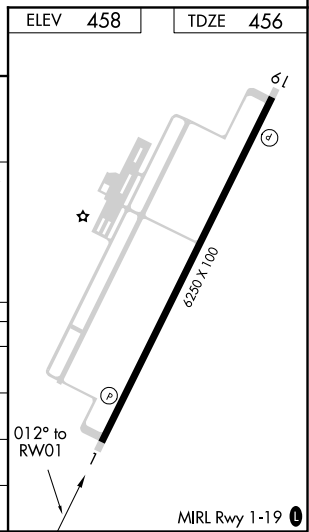
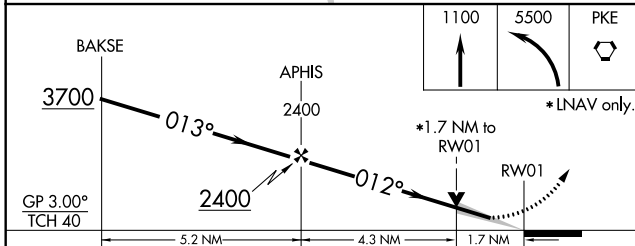
**MISSED APPROACH:** Climb to 1100 then climbing left turn to 5500 direct PKE VORTAC and hold, continue climb-in-hold to 5500.

AWOS-3PT <b>132.75</b>	LOS ANGELES CENTER <b>128.15 285.6</b>	UNICOM <b>122.725 (CTAF)</b> $\emptyset$
---------------------------	---	---



SW-4, 19 MAY 2022 to 16 JUN 2022

SW-4, 19 MAY 2022 to 16 JUN 2022



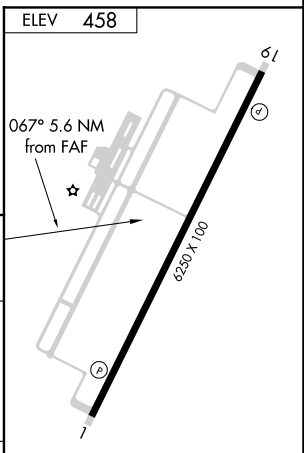
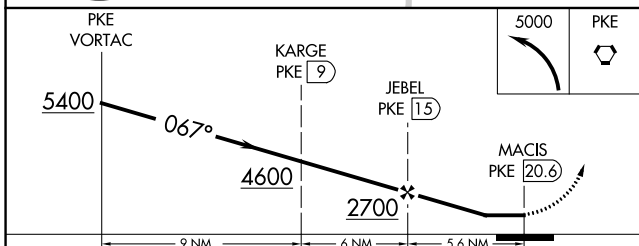
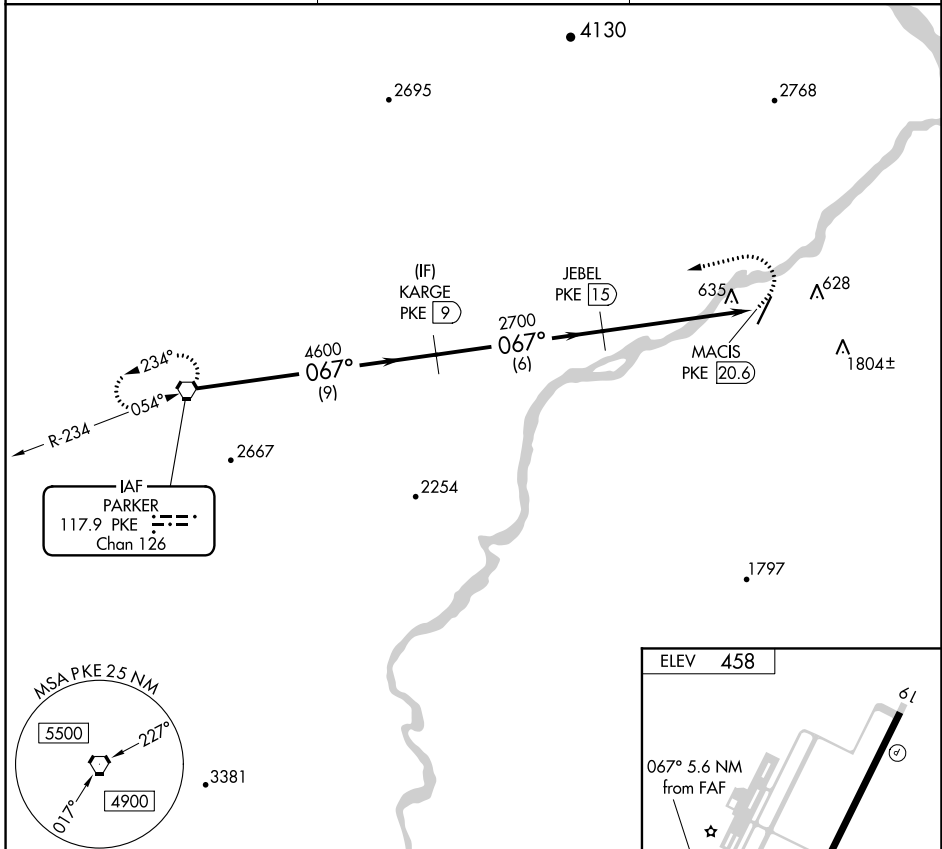
CATEGORY	A	B	C	D
LPV DA		755-1 299 (300-1)		NA
LNAV/VNAV DA		770-1 314 (400-1)		NA
LNAV MDA	1020-1 564 (600-1)		1020-1 $\frac{1}{8}$ 564 (600-1 $\frac{1}{8}$ )	NA
<b>C</b> CIRCLING	1060-1 602 (700-1)		1620-3 1162 (1200-3)	NA

VORTAC PKE <b>117.9</b> Chan <b>126</b>	APP CRS <b>067°</b>	Rwy Idg TDZE Apt Elev	<b>N/A</b> <b>N/A</b> <b>458</b>
---	------------------------	-----------------------------	--

**VOR/DME-A**  
AVI SUQUILLA (P2 $\emptyset$ )

**V** When local altimeter setting not received, use Blythe altimeter setting and increase all MDA 100 feet. **MISSED APPROACH:** Climbing left turn to 5000 direct PKE VORTAC and hold.

AWOS-3PT <b>132.75</b>	LOS ANGELES CENTER <b>128.15 285.6</b>	UNICOM <b>122.725 (CTAF)</b> $\emptyset$
---------------------------	---	---



CATEGORY	A	B	C	D
<b>C</b> CIRCLING	1900-1¼ 1442 (1500-1¼)	1900-1½ 1442 (1500-1½)	1900-3 1442 (1500-3)	NA

MRL Rwy 1-19  $\emptyset$

SW-4, 19 MAY 2022 to 16 JUN 2022

SW-4, 19 MAY 2022 to 16 JUN 2022