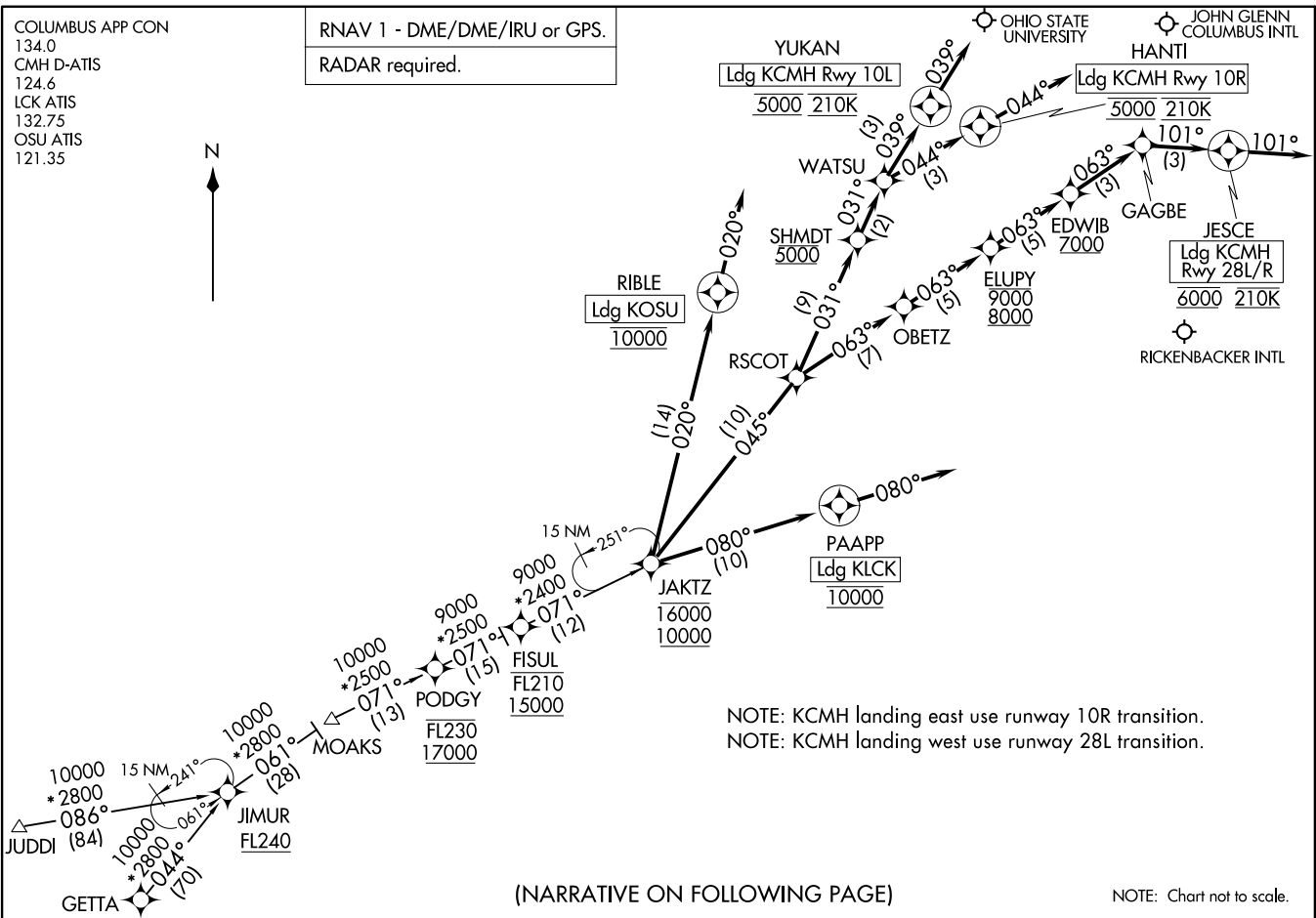


JAKTZ.JAKTZ2) 23FEB23

JAKTZ TWO ARRIVAL

COLUMBUS APP CON
 134.0
 CMH D-ATIS
 124.6
 LCK ATIS
 132.75
 OSU ATIS
 121.35

RNAV 1 - DME/DME/IRU or GPS.
 RADAR required.



NOTE: KCMH landing east use runway 10R transition.
 NOTE: KCMH landing west use runway 28L transition.

(NARRATIVE ON FOLLOWING PAGE)

NOTE: Chart not to scale.

COLUMBUS, OHIO

COLUMBUS, OHIO

JAKTZ.JAKTZ2) 23054

AL-94 (FAA)

ARRIVAL ROUTE DESCRIPTION

GETTA TRANSITION (GETTA.JAKTZ2)

JUDDI TRANSITION (JUDDI.JAKTZ2)

KCMH: From JAKTZ on track 045° to RSCOT.

LANDING KCMH RUNWAY 10L: From RSCOT on track 031° to cross SHMDT at 5000, then on track 031° to WATSU, then on track 039° to cross YUKAN at 5000 and at 210K, then on track 039°. Expect RNAV (RNP) Z Rwy 10L or RADAR vectors to ILS or LOC RWY 10L approach.

LANDING KCMH RUNWAY 10R: From RSCOT on track 031° to cross SHMDT at 5000, then on track 031° to WATSU, then on track 044° to cross HANTI at 5000 and at 210K, then on track 044°. Expect RNAV (RNP) Z Rwy 10R or RADAR vectors to ILS or LOC Rwy 10R approach.

LANDING KCMH RUNWAY 28L/R: From RSCOT on track 063° to OBETZ, then on track 063° to cross ELUPY between 8000 and 9000, then on track 063° to cross EDWIB at or above 7000, then on track 063° to GAGBE, then on track 101° to cross JESCE at 6000 and at 210K, then on track 101°. Expect RADAR vectors to final approach course.

LANDING KLCK: From JAKTZ on track 080° to cross PAAPP at 10000, then on track 080°. Expect RADAR vectors to final approach course.

LANDING KOSU: From JAKTZ on track 020° to cross RIBLE at 10000, then on track 020°. Expect RADAR vectors to final approach course.

EC-2, 22 FEB 2024 to 21 MAR 2024

EC-2, 22 FEB 2024 to 21 MAR 2024