

# HOWRY THREE ARRIVAL

NC-2, 22 FEB 2024 to 21 MAR 2024

**ARRIVAL ROUTE DESCRIPTION**

**GRAND ISLAND TRANSITION [GRI.HOWRY3]:** From over GRI VOR/DME on GRI R-063 to HOWRY.

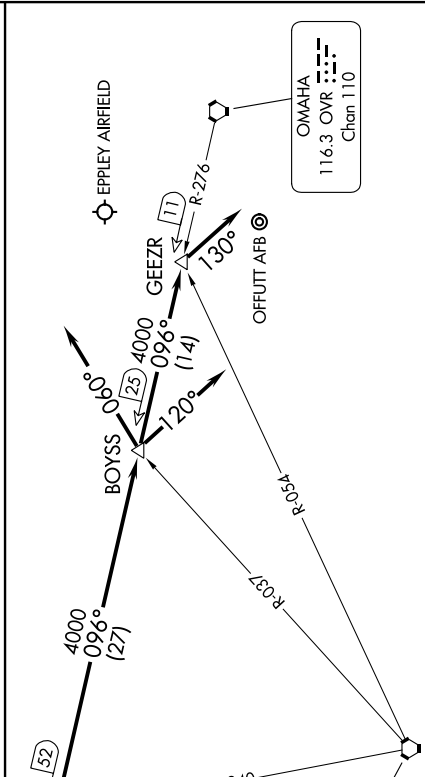
**O'NEILL TRANSITION [ONL.HOWRY3]:** From over ONL VORTAC on ONL R-125 and OLU R-308 to OLU VOR/DME, then on OLU R-095 to HOWRY.

From over HOWRY on OMAHA VORTAC (OVR) R-276 to BOYSS/OVR 25 DME. Thence . . . .

. . . . **LANDING EPLEY AIRFIELD:**  
 RUNWAYS 14L/R, 18: Depart BOYSS on heading 060°. Expect RADAR vectors to final approach course.

**RUNWAYS 32L/R, 36:** Depart BOYSS on OVR R-276 to GEEZR/OVR 11 DME, then on heading 130°. Expect RADAR vectors to final approach course.

. . . . **LANDING OFFUTT AFB:**  
**RUNWAY 13:** Expect RADAR vectors to final approach course.  
**RUNWAY 31:** Depart BOYSS on heading 120°. Expect RADAR vectors to final approach course.



# HOWRY THREE ARRIVAL

NOTE: RADAR required.  
NOTE: Chart not to scale.

NC-2, 22 FEB 2024 to 21 MAR 2024