

CHERRY POINT, NORTH CAROLINA

# RNAV (GPS) RWY 5R

WAAS Chan <b>71199</b> <b>W05A</b>	APCH CRS <b>054°</b>	Rwy Idg TDZE Arprt Elev <b>8188</b> <b>27</b> <b>29</b>
--	-------------------------	--

[USN]

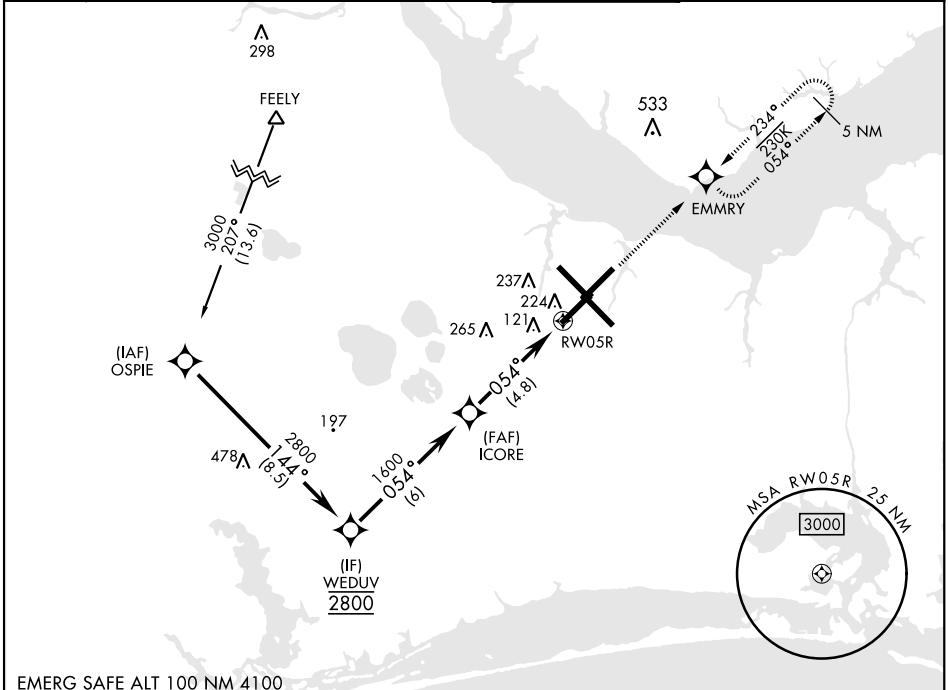
CHERRY POINT MCAS (CUNNINGHAM FLD) (KNKT)

RNP APCH

▼ For uncompensated Baro-VNAV systems, LNAV/VNAV NA below -15°C (5°F) or above 54°C (129°F).

MISSED APPROACH: Climb to 600, then climbing left turn to 2600 direct EMMRY and hold. Continue climb in hold to 2600.

ATIS <b>127.475</b> <b>244.875</b>	APP CON (E) <b>119.75</b> <b>360.775</b> (abv 2600') (E) <b>132.575</b> <b>299.6</b> (at/blw 2600') (W) <b>119.35</b> <b>377.175</b> (N) <b>124.1</b> <b>268.7</b>	TOWER <b>121.3</b> <b>340.2</b>	GND CON <b>128.625</b> <b>239.025</b>	CLNC DEL <b>125.95</b> <b>316.125</b>	ASR/ PAR
--	---	------------------------------------	---	---	-------------



SE-2, 22 FEB 2024 to 21 MAR 2024

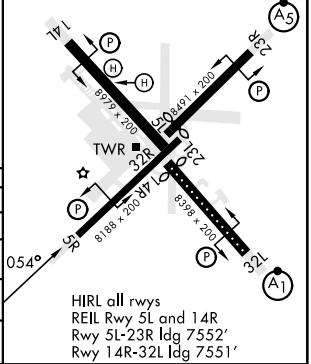
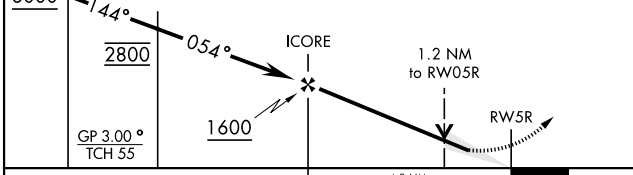
SE-2, 22 FEB 2024 to 21 MAR 2024

EMERG SAFE ALT 100 NM 4100

VGSI and RNAV glidepath not coincident (VGSI Angle 3.00/TCH 73).	600	2600	EMMRY
--	-----	------	-------

ELEV	29	TDZE	27
------	----	------	----

Rwy 32R, 23L, 14R, 5L marked in center mat area.



CATEGORY	A	B	C	D
LPV DA		226-¾	200	(200-¾)
LNAV/VNAV DA		398-1	372	(400-1)
LNAV MDA	480-1	454 (500-1)	480-1¾	454 (500-1¾)
CIRCLING	580-1	551 (600-1)	580-1½	580-2 551 (600-1½)

HIRL all rwys  
REIL Rwy 5L and 14R  
Rwy 5L-23R Idg 7552'  
Rwy 14R-32L Idg 7551'

CHERRY POINT, NORTH CAROLINA

34° 54' N-76° 53' W

CHERRY POINT MCAS (CUNNINGHAM FLD) (KNKT)

Amdt 6 02NOV23

# RNAV (GPS) RWY 5R