

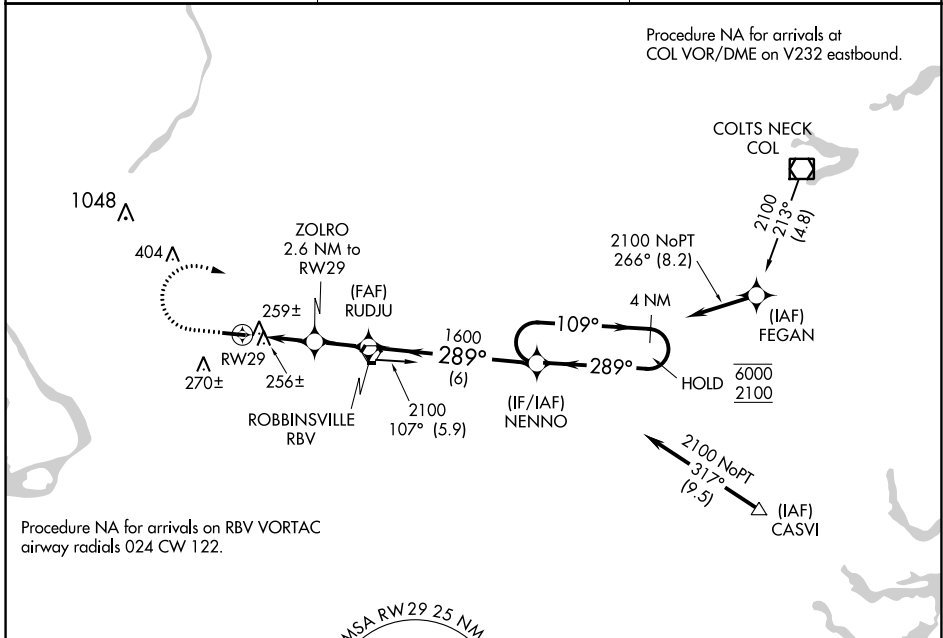
APP CRS <b>289°</b>	Rwy ldg TDZE Apt Elev	<b>3975</b> <b>118</b> <b>118</b>
------------------------	-----------------------------	---

# RNAV (GPS) RWY 29

TRENTON-ROBBINSVILLE (N87)

RNP APCH.	MISSED APPROACH: Climb to 1000, then climbing right turn to 2100 direct NENNO and hold.
<p>Procedure NA at night. Rwy 29 helicopter visibility reduction below 1 SM NA. Use Wrightstown altimeter setting.</p>	

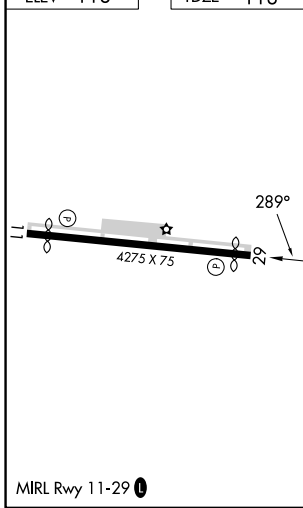
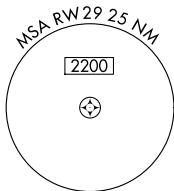
MC GUIRE APP CON <b>126.475 363.8</b>	UNICOM <b>123.0 (CTAF)</b>	<b>123.3 0</b>
--	-------------------------------	----------------



NE-2, 22 FEB 2024 to 21 MAR 2024

NE-2, 22 FEB 2024 to 21 MAR 2024

ELEV 118 TDZE 118



1000	2100	NENNO	Visual Segment - Obstacles.	
			NENNO	4 NM Holding Pattern
RWY 29		ZOLRO 2.6 NM to RWY 29	RUDJU	NENNO
	980	1600	109° →	6000
			← 289°	2100
	2.6 NM	1.9 NM	6 NM	
CATEGORY	A	B	C	D
LNAV MDA	540-1	422 (500-1)	540-1½	422 (500-1½)
CIRCLING	680-1	562 (600-1)	680-1½	760-2
			562 (600-1½)	642 (700-2)