

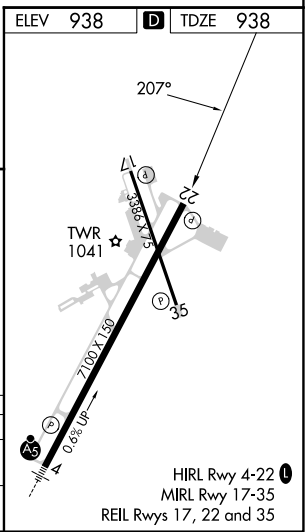
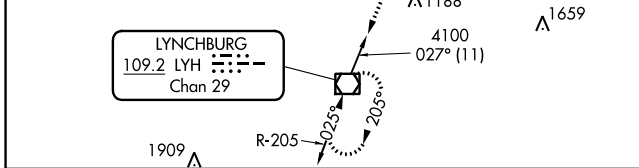
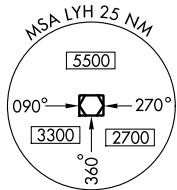
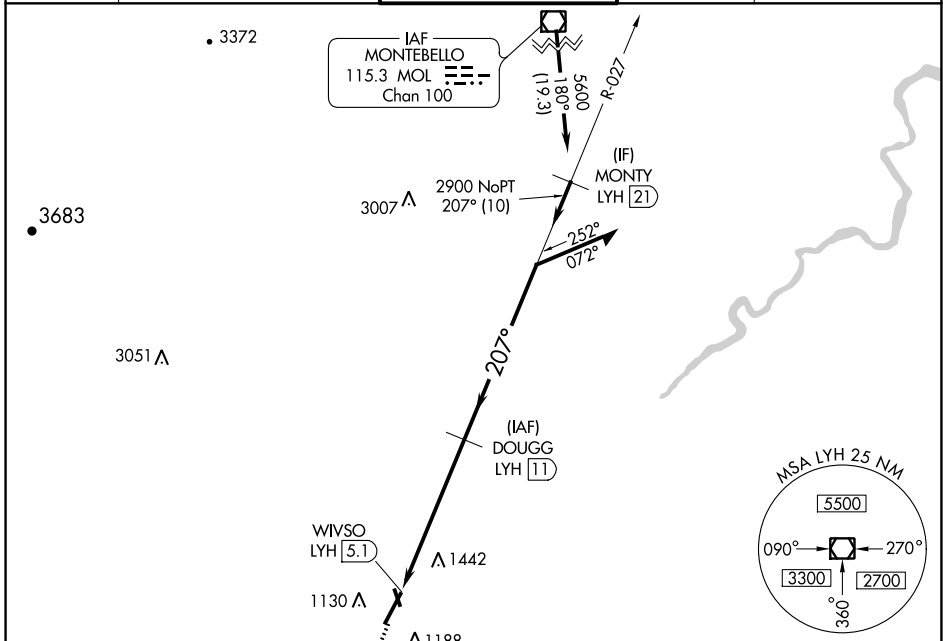
VOR/DME LYH	APP CRS	Rwy Idg	<b>7100</b>
<b>109.2</b>	<b>207°</b>	TDZE	<b>938</b>
Chan <b>29</b>		Apt Elev	<b>938</b>

# VOR RWY 22

LYNCHBURG RGNL/PRESTON GLENN FLD (LYH)

DME required.	MISSED APPROACH: Climb to 2900 direct LYH VOR/DME and hold.
▼ Rwy 22 helicopter visibility reduction below 3/4 SM NA. ▲ Circling Rwy 17 NA at night.	

ATIS <b>119.8</b>	ROANOKE APP CON <b>135.0 254,325</b>	LYNCHBURG TOWER ★ <b>127.65 (CTAF) 0 257.8</b>	GND CON <b>121.9</b>	UNICOM <b>122.95</b>
----------------------	---	---	-------------------------	-------------------------



2900	LYH	DOUGG LYH (11)	Remain within 10 NM
↑	☐		
WIVSO LYH (5.1)		4100	
		2900	VGSI and descent angles not coincident (VGSI Angle 3.00/TCH 45).
		3.02°	
		TCH 39	
	0.1	5.9 NM	

CATEGORY	A	B	C	D
S-22	1740-1 802 (900-1)	1740-1 1/4 802 (900-1 1/4)	1740-2 1/4 802 (900-2 1/4)	1740-2 1/2 802 (900-2 1/2)
CIRCLING	1740-1 802 (900-1)	1780-1 1/4 842 (900-1 1/4)	1800-2 1/2 862 (900-2 1/2)	1800-2 3/4 862 (900-2 3/4)

# VOR RWY 22

NE-3, 22 FEB 2024 to 21 MAR 2024

NE-3, 22 FEB 2024 to 21 MAR 2024

HIRL Rwy 4-22  
MIRL Rwy 17-35  
REIL Rws 17, 22 and 35