

(BARI2.BARII) 19227

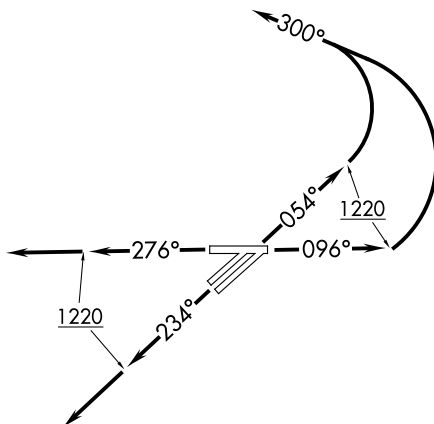
BARII TWO DEPARTURE (RNAV)

AL-467 (FAA)

WILLOW RUN (YIP)
DETROIT, MICHIGAN

**TOP ALTITUDE:
ASSIGNED BY ATC**

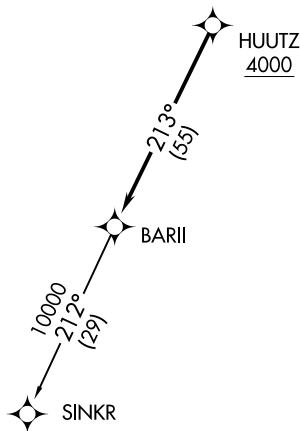
ATIS
127.425
GND CON
119.975
WILLOW RUN TOWER
125.275 256.9
DETROIT DEP CON
118.95 284.0



TAKEOFF MINIMUMS:

Rwys 5L/R, 9, 23L/R, 27: Standard with minimum climb of 500' per NM to 1220.

- NOTE: RNAV 1.
- NOTE: RADAR required.
- NOTE: DME/DME/IRU or GPS required.
- NOTE: Turbojet departures at/above 10000, maintain 280K until advised by ATC.
- NOTE: If unable to accept 500' per NM climb rate, advise clearance delivery on initial contact.



NOTE: Chart not to scale.

DEPARTURE ROUTE DESCRIPTION

TAKEOFF RUNWAYS 5L/R: Climb on heading 054° to 1220, then left turn heading 300° for RADAR vectors to cross HUUTZ at or above 4000, thence....

TAKEOFF RUNWAY 9: Climb on heading 096° to 1220, then left turn heading 300° for RADAR vectors to cross HUUTZ at or above 4000, thence....

TAKEOFF RUNWAYS 23L/R: Climb on heading 234° to 1220, then on heading 234° for RADAR vectors to cross HUUTZ at or above 4000, thence....

TAKEOFF RUNWAY 27: Climb on heading 276° to 1220, then on heading 276° for RADAR vectors to cross HUUTZ at or above 4000, thence....

....on track 213° to BARII, then on (transition). Maintain ATC assigned altitude, expect filed altitude 10 minutes after departure.

SINKR TRANSITION (BARI2.SINKR):

BARII TWO DEPARTURE (RNAV)

(BARI2.BARII) 15AUG19

DETROIT, MICHIGAN
WILLOW RUN (YIP)

EC-1, 22 FEB 2024 to 21 MAR 2024

EC-1, 22 FEB 2024 to 21 MAR 2024

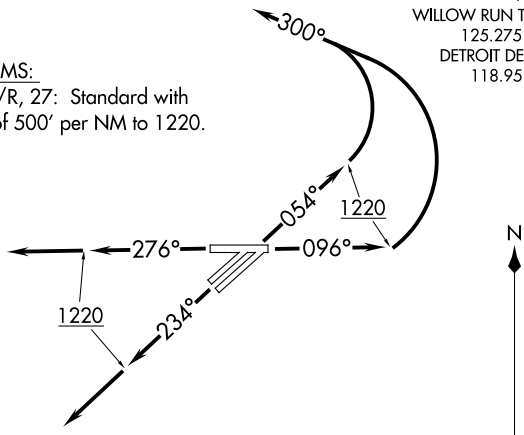
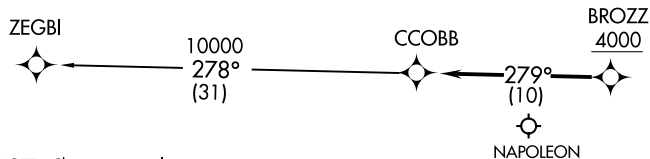
**TOP ALTITUDE:
ASSIGNED BY ATC**

ATIS
127.425
GND CON
119.975
WILLOW RUN TOWER
125.275 256.9
DETROIT DEP CON
118.95 284.0

TAKEOFF MINIMUMS:

Rwys 5L/R, 9, 23L/R, 27: Standard with minimum climb of 500' per NM to 1220.

- NOTE: RNAV 1.
- NOTE: RADAR required.
- NOTE: DME/DME/IRU or GPS required.
- NOTE: Turbojet departures at/above 10000, maintain 280K until advised by ATC.
- NOTE: For use by aircraft filed at or below FL220, or as assigned by ATC.
- NOTE: CAUTION: Parachute jumping 6 NM SW of BROZZ, 3 NM radius of Napoleon Airport (3NP) at or below 17999 (SR-SS).
- NOTE: If unable to accept 500' per NM climb rate, advise clearance delivery on initial contact.



NOTE: Chart not to scale.

DEPARTURE ROUTE DESCRIPTION

- TAKEOFF RUNWAYS 5L/R:** Climb on heading 054° to 1220, then left turn heading 300° for RADAR vectors to cross BROZZ at or above 4000, thence....
- TAKEOFF RUNWAY 9:** Climb on heading 096° to 1220, then left turn heading 300° for RADAR vectors to cross BROZZ at or above 4000, thence....
- TAKEOFF RUNWAYS 23L/R:** Climb on heading 234° to 1220, then on heading 234° for RADAR vectors to cross BROZZ at or above 4000, thence....
- TAKEOFF RUNWAY 27:** Climb on heading 276° to 1220, then on heading 276° for RADAR vectors to cross BROZZ at or above 4000, thence....

...on track 279° to CCOBB, then on (transition). Maintain ATC assigned altitude, expect filed altitude 10 minutes after departure.

ZEGBI TRANSITION (CCOBB2.ZEGBI):

CCOBB TWO DEPARTURE (RNAV)
(CCOBB2.CCOBB) 15AUG19

DETROIT, MICHIGAN
WILLOW RUN (T1P)

(CCOBB2.CCOBB) 20142
CCOBB TWO DEPARTURE (RNAV)

AL-467 (FAA)

WILLOW RUN (T1P)
DETROIT, MICHIGAN

(CLVIN2.CLVIN) 19227

CLVIN TWO DEPARTURE (RNAV)

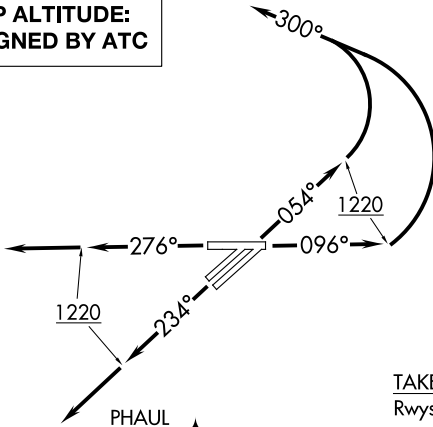
AL-467 (FAA)

WILLOW RUN (YIP)

DETROIT, MICHIGAN

**TOP ALTITUDE:
ASSIGNED BY ATC**

ATIS
127.425
GND CON
119.975
WILLOW RUN TOWER
125.275 256.9
DETROIT DEP CON
118.95 284.0



TAKEOFF MINIMUMS:

Rwys 5L/R, 9, 23L/R, 27: Standard with minimum climb of 500' per NM to 1220.

- NOTE: RNAV 1.
- NOTE: RADAR required.
- NOTE: DME/DME/IRU or GPS required.
- NOTE: Turbojet departures at/above 10000, maintain 280K until advised by ATC.
- NOTE: If unable to accept 500' per NM climb rate, advise clearance delivery in initial contact.

NOTE: Chart not to scale.

DEPARTURE ROUTE DESCRIPTION

TAKEOFF RUNWAYS 5L/R: Climb on heading 054° to 1220, then left turn heading 300° for RADAR vectors to cross PHAUL at or above 4000, thence....

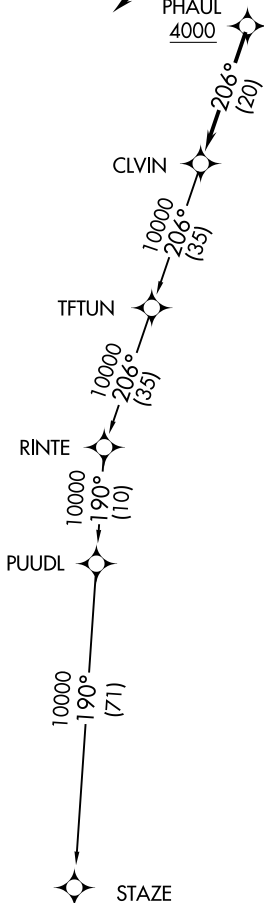
TAKEOFF RUNWAY 9: Climb on heading 096° to 1220, then left turn heading 300° for RADAR vectors to cross PHAUL at or above 4000, thence....

TAKEOFF RUNWAYS 23L/R: Climb on heading 234° to 1220, then on heading 234° for RADAR vectors to cross PHAUL at or above 4000, thence....

TAKEOFF RUNWAY 27: Climb on heading 276° to 1220, then on heading 276° for RADAR vectors to cross PHAUL at or above 4000, thence....

...on track 206° to CLVIN, then on (transition). Maintain ATC assigned altitude, expect filed altitude 10 minutes after departure.

STAZE TRANSITION (CLVIN2.STAZE):



CLVIN TWO DEPARTURE (RNAV)

(CLVIN2.CLVIN) 15AUG19

DETROIT, MICHIGAN

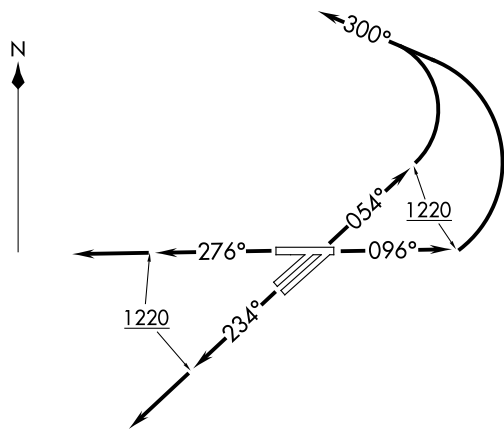
WILLOW RUN (YIP)

EC-1, 22 FEB 2024 to 21 MAR 2024

EC-1, 22 FEB 2024 to 21 MAR 2024

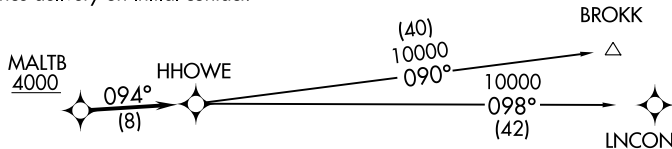
HHOWE THREE DEPARTURE (RNAV)
 (HHOWE3.HHOWE) 05DEC19

**TOP ALTITUDE:
 ASSIGNED BY ATC**



- NOTE: RNAV 1.
- NOTE: RADAR required.
- NOTE: DME/DME/IRU or GPS required.
- NOTE: Turbojet departures at/above 10000, maintain 280K until advised by ATC.
- NOTE: BROKK TRANSITION: For use by flights filed at or below FL270, or as assigned by ATC.
- NOTE: If unable to accept 500' per NM climb rate, advise clearance delivery on initial contact.

ATIS 127.425
 GND CON 119.975
 WILLOW RUN TOWER 125.275 256.9
 DETROIT DEP CON 118.95 284.0



TAKEOFF MINIMUMS:

Rwys 5L/R, 9, 23L/R, 27: Standard with minimum climb of 500' per NM to 1220.

NOTE: Chart not to scale.



DEPARTURE ROUTE DESCRIPTION

TAKEOFF RUNWAYS 5L/R: Climb on heading 054° to 1220, then left turn heading 300° for RADAR vectors to cross MALTB at or above 4000, thence....

TAKEOFF RUNWAY 9: Climb on heading 096° to 1220, then left turn heading 300° for RADAR vectors to cross MALTB at or above 4000, thence....

TAKEOFF RUNWAYS 23L/R: Climb on heading 234° to 1220, then on heading 234° for RADAR vectors to cross MALTB at or above 4000, thence....

TAKEOFF RUNWAY 27: Climb on heading 276° to 1220, then on heading 276° for RADAR vectors to cross MALTB at or above 4000, thence....

...on track 094° to HHOWE, then on (transition). Maintain ATC assigned altitude, expect filed altitude 10 minutes after departure.

BROKK TRANSITION (HHOWE3.BROKK)

LNCON TRANSITION (HHOWE3.LNCON)

DETROIT, MICHIGAN
 WILLOW RUN (TIP)

(HHOWE3.HHOWE) 19339
 HHOWE THREE DEPARTURE (RNAV) AL467 (FAA)

WILLOW RUN (TIP)
 DETROIT, MICHIGAN

KAYLN TWO DEPARTURE (RNAV)
(KAYLN2.KAYLN) 15AUG19

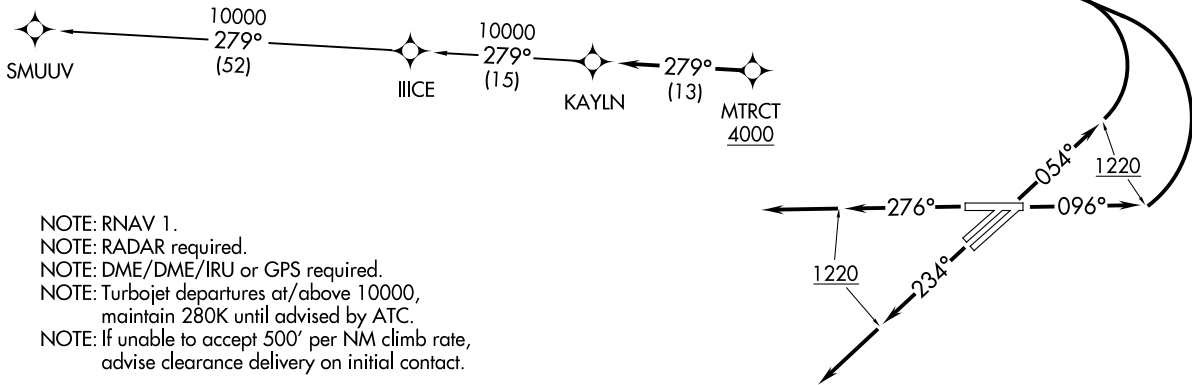
DETROIT, MICHIGAN
WILLOW RUN (TYP)

**TOP ALTITUDE:
ASSIGNED AT ATC**

TAKEOFF MINIMUMS:

Rwys 5L/R, 9, 23L/R, 27: Standard with minimum climb of 500' per NM to 1220.

ATIS 127.425
GND CON 119.975
WILLOW RUN TOWER 125.275 256.9
DETROIT DEP CON 118.95 284.0



- NOTE: RNAV 1.
- NOTE: RADAR required.
- NOTE: DME/DME/IRU or GPS required.
- NOTE: Turbojet departures at/above 10000, maintain 280K until advised by ATC.
- NOTE: If unable to accept 500' per NM climb rate, advise clearance delivery on initial contact.

NOTE: Chart not to scale.

DEPARTURE ROUTE DESCRIPTION

TAKEOFF RUNWAYS 5L/R: Climb on heading 054° to 1220, then left turn heading 300° for RADAR vectors to cross MTRCT at or above 4000, thence....

TAKEOFF RUNWAY 9: Climb on heading 096° to 1220, then left turn heading 300° for RADAR vectors to cross MTRCT at or above 4000, thence....

TAKEOFF RUNWAYS 23L/R: Climb on heading 234° to 1220, then on heading 234° for RADAR vectors to cross MTRCT at or above 4000, thence....

TAKEOFF RUNWAY 27: Climb on heading 276° to 1220, then on heading 276° for RADAR vectors to cross MTRCT at or above 4000, thence....

....on track 279° to KAYLN, then on (transition). Maintain ATC assigned altitude, expect filed altitude 10 minutes after departure.

SMUUV TRANSITION (KAYLN2.SMUUV):

(KAYLN2.KAYLN) 19927

KAYLN TWO DEPARTURE (RNAV)

AL-467 (FAA)

WILLOW RUN (TYP)
DETROIT, MICHIGAN

KZLOV ONE DEPARTURE (RNAV)
(KZLOV1, WINNZ) 14JUL22

(KZLOV1, WINNZ) 22195
KZLOV ONE DEPARTURE (RNAV)

AL-467 (FAA)

WILLOW RUN (TIP)
DETROIT, MICHIGAN

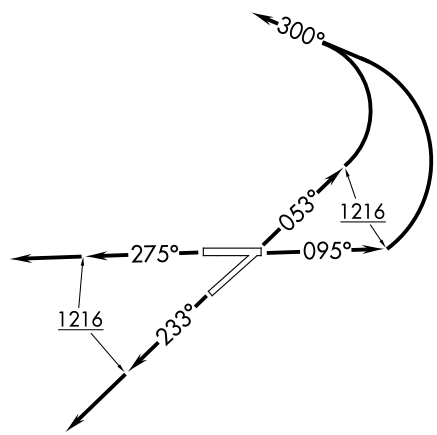
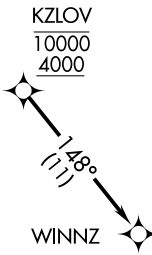
ATIS 127.425
GND CON 119.975
WILLOW RUN TOWER 125.275 256.9
DETROIT DEP CON 118.95 284.0

**TOP ALTITUDE:
ASSIGNED BY ATC**

RNAV 1 - DME/DME/IRU or GPS.
RADAR required.

NOTE: Turbojet departures at/above 10000, maintain 280K until advised by ATC.
NOTE: If unable initial 500' per NM climb rate, advise clearance delivery on initial contact.
NOTE: For use by Cleveland terminal arrivals only.

TAKEOFF MINIMUMS:
Rwy 5L/R, 9, 23L/R, 27: Standard with minimum climb of 500' per NM to 1216.



NOTE: Chart not to scale.

DEPARTURE ROUTE DESCRIPTION

TAKEOFF RUNWAYS 5: Climb on heading 053° to 1216, then on heading 300° or as assigned for RADAR vectors to cross KZLOV at or above 4000 and at or below 10000, thence....

TAKEOFF RUNWAY 9: Climb on heading 095° to 1216, then on heading 300° or as assigned for RADAR vectors to cross KZLOV at or above 4000 and at or below 10000, thence....

TAKEOFF RUNWAYS 23: Climb on heading 233° to 1216, then on heading 233° or as assigned for RADAR vectors to cross KZLOV at or above 4000 and at or below 10000, thence....

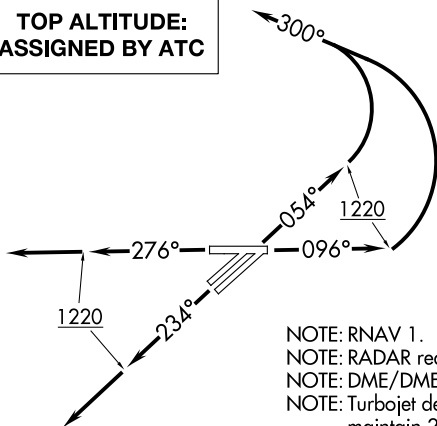
TAKEOFF RUNWAY 27: Climb on heading 275° to 1216, then on heading 275° or as assigned for RADAR vectors to cross KZLOV at or above 4000 and at or below 10000, thence....

....on track 148° to WINNZ. Maintain assigned altitude, expect filed altitude ten minutes after departure.

DETROIT, MICHIGAN
WILLOW RUN (TIP)

LIDDS TWO DEPARTURE (RNAV)
(LIDDS2.LIDDS) 15AUG19

TOP ALTITUDE:
ASSIGNED BY ATC



- NOTE: RNAV 1.
- NOTE: RADAR required.
- NOTE: DME/DME/IRU or GPS required.
- NOTE: Turbojet departures at/above 10000, maintain 280K until advised by ATC.
- NOTE: If unable to accept 500' per NM climb rate, advise clearance delivery on initial contact.

TAKEOFF MINIMUMS:

Rwys 5L/R, 9, 23L/R, 27: Standard with minimum climb of 500' per NM to 1220.

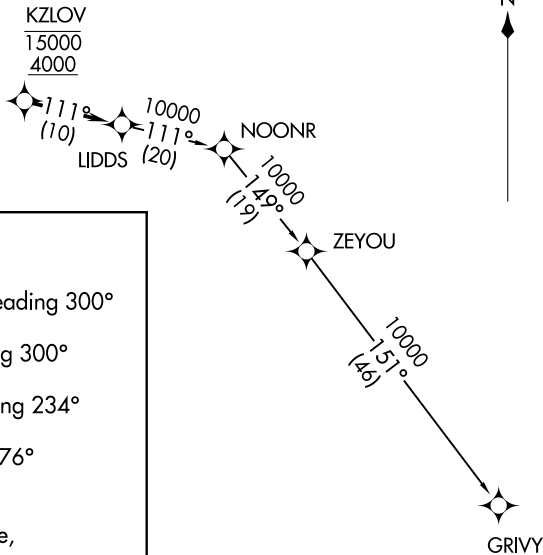
ATIS 127.425
 GND CON 119.975
 WILLOW RUN TOWER 125.275 256.9
 DETROIT DEP CON 118.95 284.0

DEPARTURE ROUTE DESCRIPTION

TAKEOFF RUNWAYS 5L/R: Climb on heading 054° to 1220, then left turn heading 300° for RADAR vectors to cross KZLOV between 4000 and 15000, thence....
TAKEOFF RUNWAY 9: Climb on heading 096° to 1220, then left turn heading 300° for RADAR vectors to cross KZLOV between 4000 and 15000, thence....
TAKEOFF RUNWAYS 23L/R: Climb on heading 234° to 1220, then on heading 234° for RADAR vectors to cross KZLOV between 4000 and 15000, thence....
TAKEOFF RUNWAY 27: Climb on heading 276° to 1220, then on heading 276° for RADAR vectors to cross KZLOV between 4000 and 15000, thence....

....on track 111° to LIDDS, then on (transition). Maintain ATC assigned altitude, expect filed altitude 10 minutes after departure.

GRIVY TRANSITION (LIDDS2.GRIVY):



NOTE: Chart not to scale.

DETROIT, MICHIGAN
WILLOW RUN (TIP)

(LIDDS2.LIDDS) 19227
 LIDDS TWO DEPARTURE (RNAV)
 AL-467 (FAA)
 WILLOW RUN (TIP)
 DETROIT, MICHIGAN

**TOP ALTITUDE:
3000**

(METRO3.DXO) 23334
METRO THREE DEPARTURE

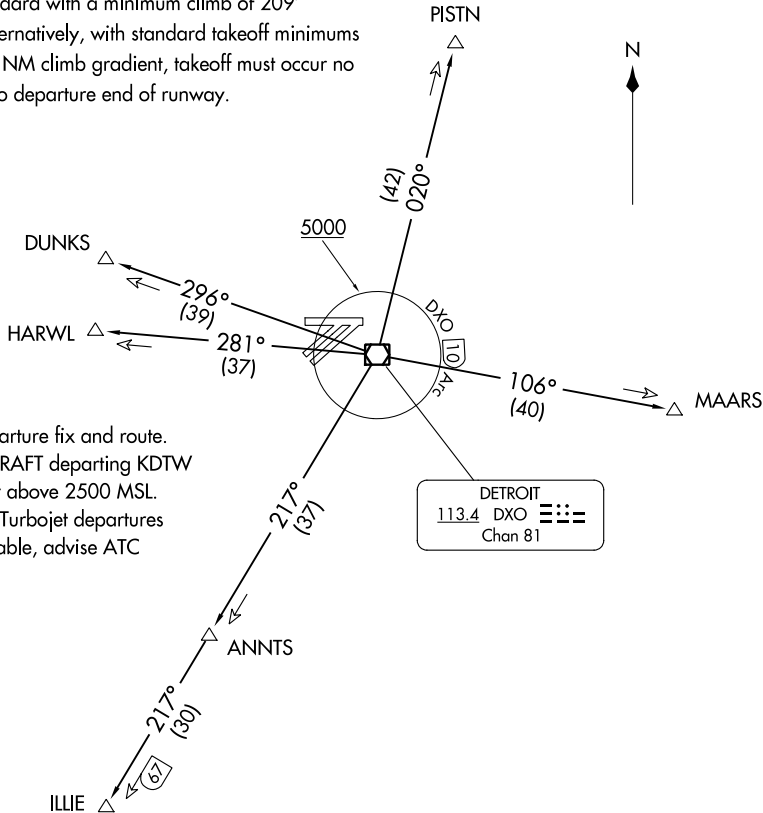
AL-467 (FAA)

WILLOW RUN (Y1P)
DETROIT, MICHIGAN

TAKEOFF MINIMUMS

Rwys 5L/R, 9, 23L/R: Standard.

Rwy 27: 300-1½ or standard with a minimum climb of 209' per NM to 1000, or alternatively, with standard takeoff minimums and a normal 200' per NM climb gradient, takeoff must occur no later than 1300' prior to departure end of runway.



ATIS 127.425
GND CON 119.975
WILLOW RUN TOWER 125.275 256.9
DETROIT DEP CON 118.95 284.0

NOTE: RADAR required.
NOTE: DME required.
NOTE: For use by non-RNAV equipped aircraft only.

SPECIAL INSTRUCTIONS:

When using this departure, file the appropriate depicted departure fix and route. Aircraft over HARWL must file FL220 and below. PROP AIRCRAFT departing KDTW Rwy 21L/R and 22L/R westbound, cross DXO 3.5 DME at or above 2500 MSL. Aircraft landing Cleveland (CLE) must file MAARS transition. Turbojet departures at/above 10000, maintain 280K until advised by ATC. If unable, advise ATC prior to departure.

(NARRATIVE ON FOLLOWING PAGE)

NOTE: Chart not to scale.

METRO THREE DEPARTURE
(METRO3.DXO) 05NOV20

DETROIT, MICHIGAN
WILLOW RUN (Y1P)



DEPARTURE ROUTE DESCRIPTION

TAKEOFF ALL RUNWAYS: Climb on assigned heading, thence....

.....maintain ATC assigned altitude for RADAR vectors to intercept filed/assigned transition or enroute fix/navaid. When ATC assigned altitude is at or above 5000, cross DXO 10 DME Arc at or above 5000 for noise abatement. If unable to comply, advise ATC prior to departure. Expect clearance to filed altitude/flight level within ten (10) minutes after departure.

DUNKS TRANSITION (METRO3.DUNKS): From over DXO VOR/DME on DXO R-296 to DUNKS.

HARWL TRANSITION (METRO3.HARWL): From over DXO VOR/DME on DXO R-281 to HARWL.

ILLIE TRANSITION (METRO3.ILLIE): From over DXO VOR/DME on DXO R-217 to ILLIE.

MAARS TRANSITION (METRO3.MAARS): From over DXO VOR/DME on DXO R-106 to MAARS.

PISTN TRANSITION (METRO3.PISTN): From over DXO VOR/DME on DXO R-020 to PISTN.

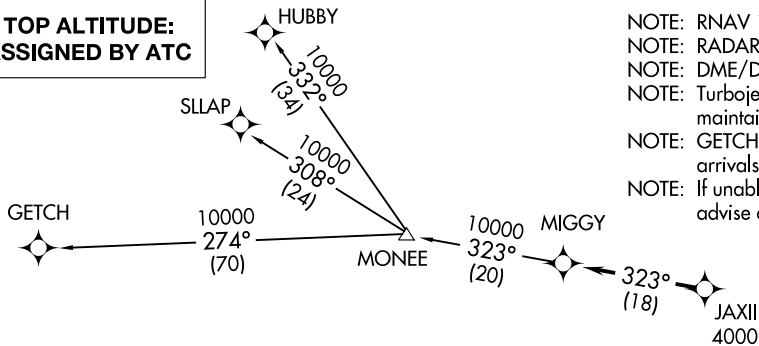
EC-1, 22 FEB 2024 to 21 MAR 2024

EC-1, 22 FEB 2024 to 21 MAR 2024

MIGGY TWO DEPARTURE (RNAV)
(MIGGY2.MIGGY) 15AUG19

DETROIT, MICHIGAN
WILLOW RUN (TIP)

**TOP ALTITUDE:
ASSIGNED BY ATC**



TAKEOFF MINIMUMS:

Rwys 5L/R, 9, 23L/R, 27: Standard with minimum climb of 500' per NM to 1220.

DEPARTURE ROUTE DESCRIPTION

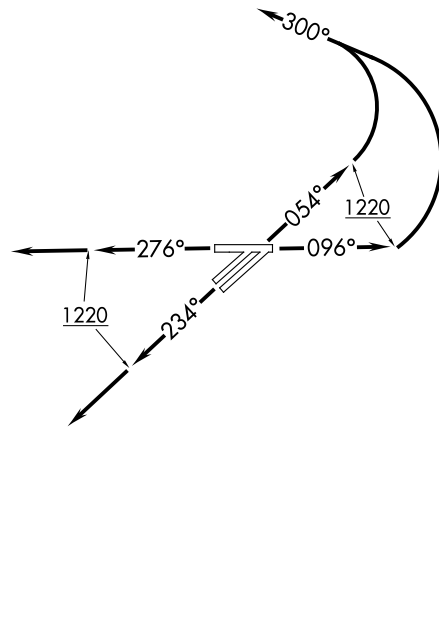
TAKEOFF RUNWAYS 5L/R: Climb on heading 054° to 1220, then left turn heading 300° for RADAR vectors to cross JAXII at or above 4000, thence....
TAKEOFF RUNWAY 9: Climb on heading 096° to 1220, then left turn heading 300° for RADAR vectors to cross JAXII at or above 4000, thence....
TAKEOFF RUNWAYS 23L/R: Climb on heading 234° to 1220, then on heading 234° for RADAR vectors to cross JAXII at or above 4000, thence....
TAKEOFF RUNWAY 27: Climb on heading 276° to 1220, then on heading 276° for RADAR vectors to cross JAXII at or above 4000, thence....

....on track 323° to MIGGY, then on (transition). Maintain ATC assigned altitude, expect filed altitude 10 minutes after departure.

- GETCH TRANSITION (MIGGY2.GETCH):
- HUBBY TRANSITION (MIGGY2.HUBBY):
- SLLAP TRANSITION (MIGGY2.SLLAP):

- NOTE: RNAV 1.
- NOTE: RADAR required.
- NOTE: DME/DME/IRU or GPS required.
- NOTE: Turbojet departures at/above 10000, maintain 280K until advised by ATC.
- NOTE: GETCH TRANSITION: For use by KMKE area arrivals only, or as assigned by ATC.
- NOTE: If unable to accept 500' per NM climb rate, advise clearance delivery on initial contact.

ATIS 127.425
GND CON 119.975
WILLOW RUN TOWER 125.275 256.9
DETROIT DEP CON 118.95 284.0



NOTE: Chart not to scale.

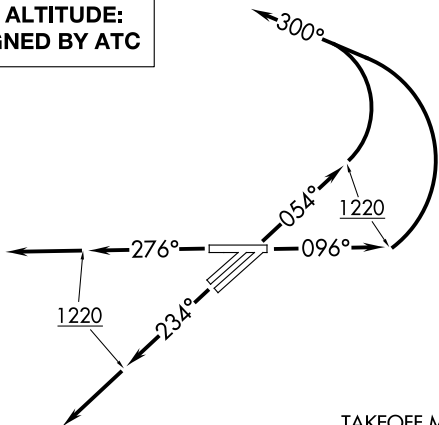
(MIGGY2.MIGGY) 19227
MIGGY TWO DEPARTURE (RNAV)

AL-467 (FAA)

WILLOW RUN (TIP)
DETROIT, MICHIGAN

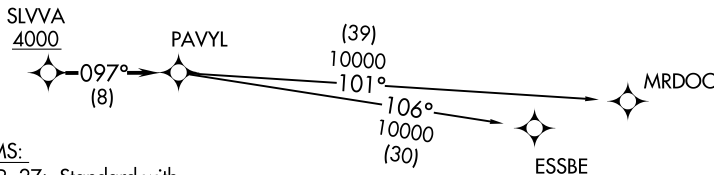
PAVYL TWO DEPARTURE (RNAV)
 (PAVYL2.PAVYL) 15AUG19

**TOP ALTITUDE:
 ASSIGNED BY ATC**



NOTE: RNAV 1.
 NOTE: RADAR required.
 NOTE: DME/DME/IRU or GPS required.
 NOTE: Turbojet departures at/above 10000,
 maintain 280K until advised by ATC.
 NOTE: If unable to accept 500' per NM climb rate,
 advise clearance delivery on initial contact.

ATIS
 127.425
 GND CON
 119.975
 WILLOW RUN TOWER
 125.275 256.9
 DETROIT DEP CON
 118.95 284.0



TAKEOFF MINIMUMS:

Rwys 5L/R, 9, 23L/R, 27: Standard with
 minimum climb of 500' per NM to 1220.

NOTE: Chart not to scale.



DEPARTURE ROUTE DESCRIPTION

TAKEOFF RUNWAYS 5L/R: Climb on heading 054° to 1220, then left turn heading 300° for RADAR vectors to cross SLVVA at or above 4000, thence....

TAKEOFF RUNWAY 9: Climb on heading 096° to 1220, then left turn heading 300° for RADAR vectors to cross SLVVA at or above 4000, thence....

TAKEOFF RUNWAYS 23L/R: Climb on heading 234° to 1220, then on heading 234° for RADAR vectors to cross SLVVA at or above 4000, thence....

TAKEOFF RUNWAY 27: Climb on heading 276° to 1220, then on heading 276° for RADAR vectors to cross SLVVA at or above 4000, thence....

...on track 097° to PAVYL, then on (transition). Maintain ATC assigned altitude, expect filed altitude 10 minutes after departure.

ESSBE TRANSITION (PAVYL2.ESSBE):
MRDOC TRANSITION (PAVYL2.MRDOC):

DETROIT, MICHIGAN
 WILLOW RUN (TIP)

(PAVYL2.PAVYL) 1922Z
 PAVYL TWO DEPARTURE (RNAV)

AL-467 (FAA)

WILLOW RUN (TIP)
 DETROIT, MICHIGAN

SNDRS TWO DEPARTURE (RNAV)
(SNDRS2.SNDRS) 15AUG19

DEPARTURE ROUTE DESCRIPTION

TAKEOFF RUNWAYS 5L/R: Climb on heading 054° to 1220, then left turn heading 300° for RADAR vectors to cross JWELS at or above 4000, thence....

TAKEOFF RUNWAY 9: Climb on heading 096° to 1220, then left turn heading 300° for RADAR vectors to cross JWELS at or above 4000, thence....

TAKEOFF RUNWAYS 23L/R: Climb on heading 234° to 1220, then on heading 234° for RADAR vectors to cross JWELS at or above 4000, thence....

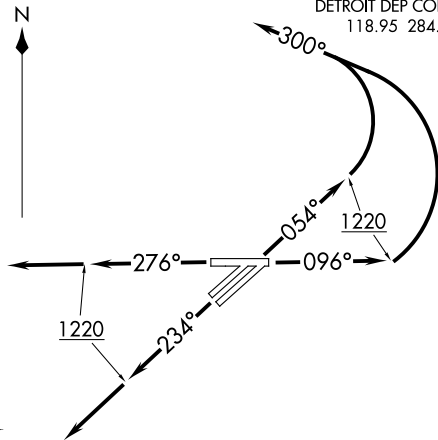
TAKEOFF RUNWAY 27: Climb on heading 276° to 1220, then on heading 276° for RADAR vectors to cross JWELS at or above 4000, thence....

...on track 218° to SNDRS, then on (transition). Maintain ATC assigned altitude, expect filed altitude 10 minutes after departure.

BGHRT TRANSITION (SNDRS2.BGHRT):
TORRR TRANSITION (SNDRS2.TORRR):

- NOTE: RNAV 1.
- NOTE: RADAR required.
- NOTE: DME/DME/IRU or GPS required.
- NOTE: Turbojet departures at/above 10000, maintain 280K until advised by ATC.
- NOTE: TORRR TRANSITION: For use by KIND and KCVG area arrivals only and flights filed at or below FL220, or as assigned by ATC.
- NOTE: If unable to accept 500' per NM climb rate, advise clearance delivery on initial contact.

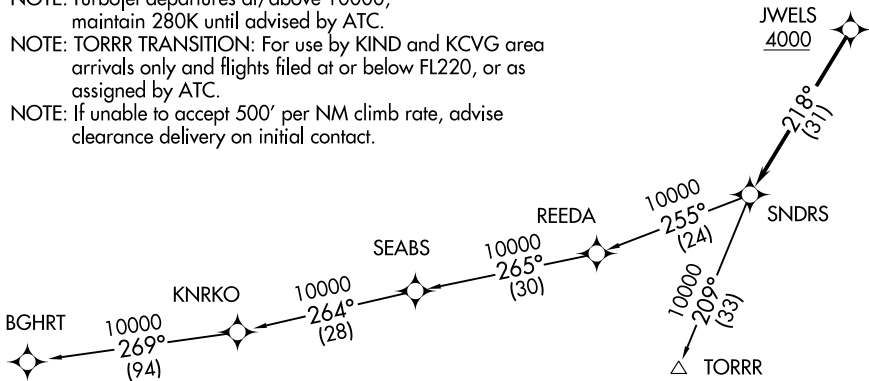
TOP ALTITUDE: ASSIGNED BY ATC



ATIS 127.425
 GND CON 119.975
 WILLOW RUN TOWER 125.275 256.9
 DETROIT DEP CON 118.95 284.0

TAKEOFF MINIMUMS:
 Rwy 5L/R, 9, 23L/R, 27: Standard with minimum climb of 500' per NM to 1220.

NOTE: Chart not to scale.



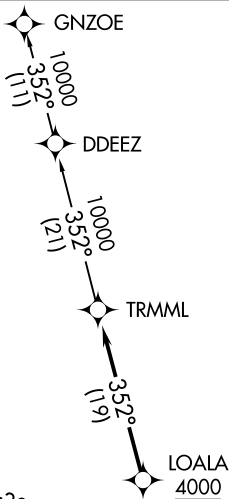
DETROIT, MICHIGAN
WILLOW RUN (TTP)

(SNDRS2.SNDRS) 19227
SNDRS TWO DEPARTURE (RNAV)

AL-467 (FAA)

WILLOW RUN (TTP)
DETROIT, MICHIGAN

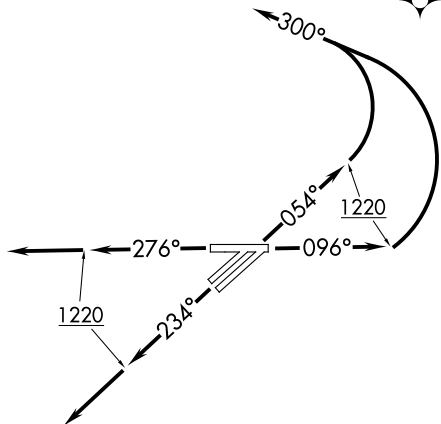
**TOP ALTITUDE:
ASSIGNED BY ATC**



ATIS
127.425
GND CON
119.975
WILLOW RUN TOWER
125.275 256.9
DETROIT DEP CON
118.95 284.0

TAKEOFF MINIMUMS:

Rwys 5L/R, 9, 23L/R, 27: Standard with minimum climb of 500' per NM to 1220.



- NOTE: RNAV 1.
- NOTE: RADAR required.
- NOTE: DME/DME/IRU or GPS required.
- NOTE: Turbojet departures at/above 10000, maintain 280K until advised by ATC.
- NOTE: If unable to accept 500' per NM climb rate, advise clearance delivery on initial contact.

NOTE: Chart not to scale.

DEPARTURE ROUTE DESCRIPTION

TAKEOFF RUNWAYS 5L/R: Climb on heading 054° to 1220, then left turn heading 300° for RADAR vectors to cross LOALA at or above 4000, thence....

TAKEOFF RUNWAY 9: Climb on heading 096° to 1220, then left turn heading 300° for RADAR vectors to cross LOALA at or above 4000, thence....

TAKEOFF RUNWAYS 23L/R: Climb on heading 234° to 1220, then on heading 234° for RADAR vectors to cross LOALA at or above 4000, thence....

TAKEOFF RUNWAY 27: Climb on heading 276° to 1220, then on heading 276° for RADAR vectors to cross LOALA at or above 4000, thence....

....on track 352° to TRMML, then on (transition). Maintain ATC assigned altitude, expect filed altitude 10 minutes after departure.

GNZOE TRANSITION (TRMML3.GNZOE):

(ZETTR3.ZETTR) 19339

ZETTR THREE DEPARTURE (RNAV)

AL-467 (FAA)

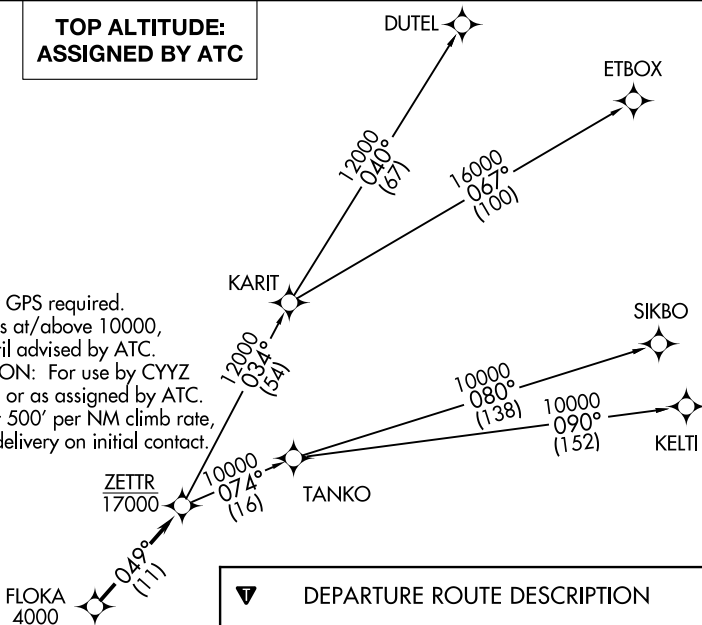
WILLOW RUN (YIP)

DETROIT, MICHIGAN

ATIS
127.425
GND CON
119.975
WILLOW RUN TOWER
125.275 256.9
DETROIT DEP CON
118.95 284.0

**TOP ALTITUDE:
ASSIGNED BY ATC**

- NOTE: RNAV 1.
- NOTE: RADAR required.
- NOTE: DME/DME/IRU or GPS required.
- NOTE: Turbojet departures at/above 10000, maintain 280K until advised by ATC.
- NOTE: TANKO TRANSITION: For use by CYYZ area arrivals only, or as assigned by ATC.
- NOTE: If unable to accept 500' per NM climb rate, advise clearance delivery on initial contact.



DEPARTURE ROUTE DESCRIPTION

TAKEOFF RUNWAYS 5L/R: Climb on heading 054° to 1220, then left turn heading 300° for RADAR vectors to cross FLOKA at or above 4000, thence....

TAKEOFF RUNWAY 9: Climb on heading 096° to 1220, then left turn heading 300° for RADAR vectors to cross FLOKA at or above 4000, thence....

TAKEOFF RUNWAYS 23L/R: Climb on heading 234° to 1220, then on heading 234° for RADAR vectors to cross FLOKA at or above 4000, thence....

TAKEOFF RUNWAY 27: Climb on heading 276° to 1220, then on heading 276° for RADAR vectors to cross FLOKA at or above 4000, thence....

....on track 049° to cross ZETTR at or below 17000, then on (transition). Maintain ATC assigned altitude, expect filed altitude 10 minutes after departure.

DUTEL TRANSITION (ZETTR3.DUTEL):

ETBOX TRANSITION (ZETTR3.ETBOX):

KELTI TRANSITION (ZETTR3.KELTI):

SIKBO TRANSITION (ZETTR3.SIKBO):

TANKO TRANSITION (ZETTR3.TANKO):

TAKEOFF MINIMUMS:

Rwys 5L/R, 9, 23L/R, 27: Standard with minimum climb of 500' per NM to 1220.

NOTE: Chart not to scale.

ZETTR THREE DEPARTURE (RNAV)

(ZETTR3.ZETTR) 05DEC19

DETROIT, MICHIGAN

WILLOW RUN (YIP)

EC-1, 22 FEB 2024 to 21 MAR 2024

EC-1, 22 FEB 2024 to 21 MAR 2024