

APP CRS	Rwy Idg	5020
007°	TDZE	755
	Apt Elev	759

RNAV (GPS) RWY 1

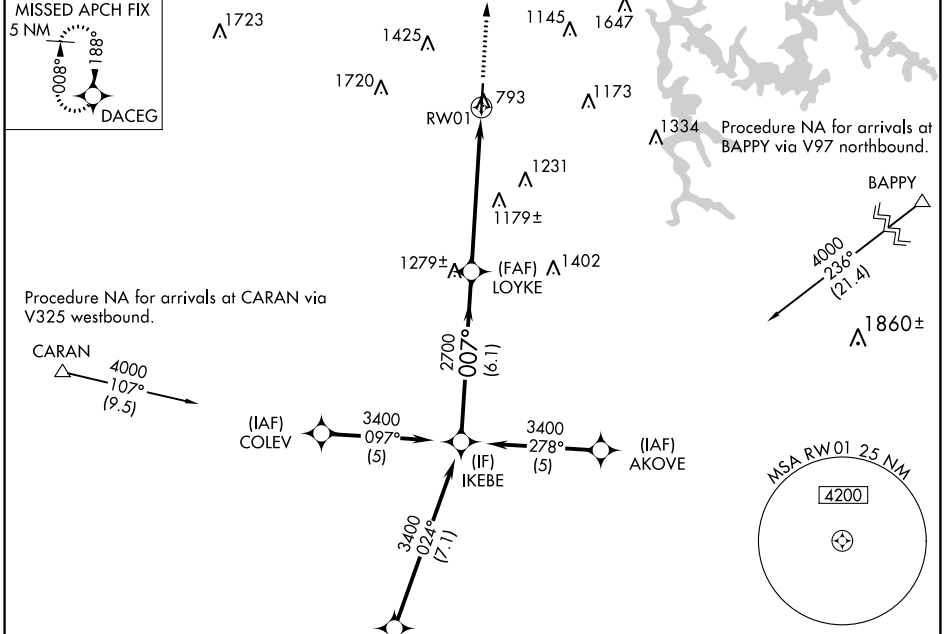
CARTERSVILLE (VPC)

RNP APCH - GPS.

When local altimeter setting not received, use Rome altimeter setting: increase all MDAs 80 feet and LNAV visibility Cat B/C/D ½ SM.

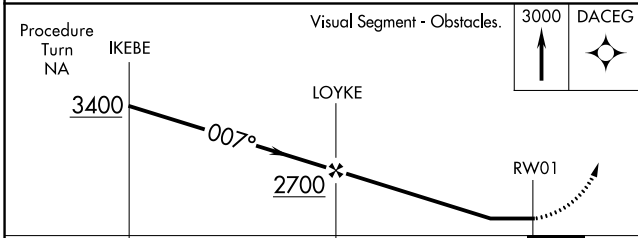
MISSED APPROACH: Climb to 3000 direct DACEG and hold.

AWOS-3PT 120.525	ATLANTA APP CON 121.0 268.7	UNICOM 122.7 (CTAF) 0
----------------------------	---------------------------------------	---------------------------------

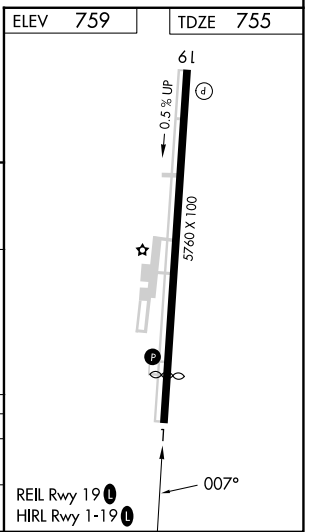


Procedure Turn NA

Visual Segment - Obstacles. 3000 DACEG



CATEGORY	A	B	C	D
LNAV MDA	1440-1	685 (700-1)	1440-2	685 (700-2)
CIRCLING	1440-1 681 (700-1)	1600-1¼ 841 (900-1¼)	1740-3 981 (1000-3)	2020-3 1261 (1300-3)



SE-4, 22 FEB 2024 to 21 MAR 2024

SE-4, 22 FEB 2024 to 21 MAR 2024

WAAS CH 58005 W19A	APP CRS 187°	Rwy Idg TDZE 749 Apt Elev 759	5760
--	------------------------	---	-------------

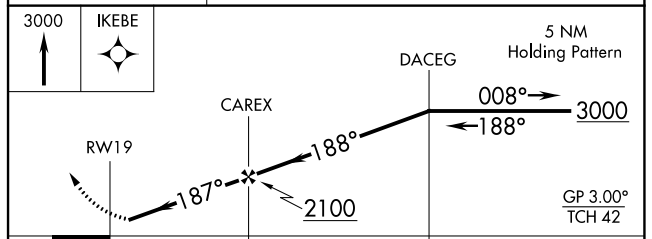
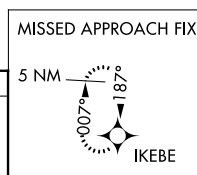
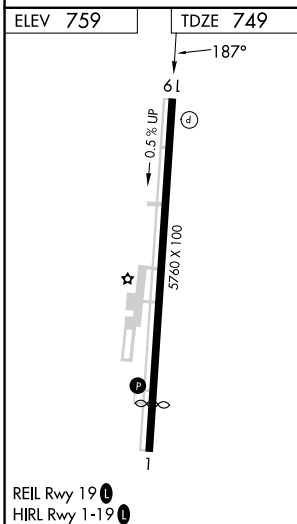
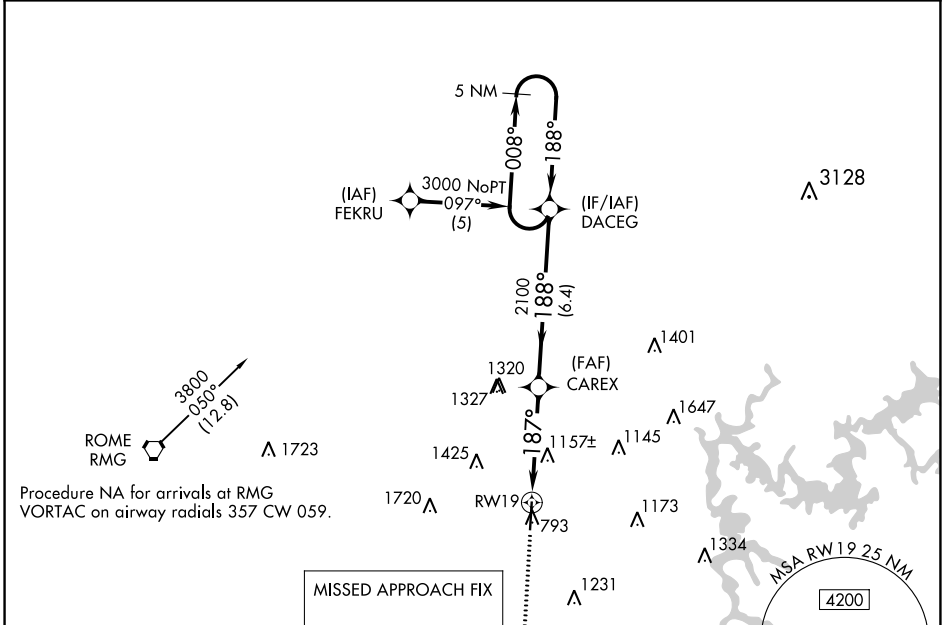
RNAV (GPS) RWY 19

CARTERSVILLE (VPC)

⚠ When local alimeter setting not received, use Rome alimeter setting and increase LPV DA to 1072 and all MDA 80 feet; increase LNAV MDA Cat B visibility ¼ SM and Cat C/D visibility ½ SM. DME/DME RNP-0.3 NA. Rwy 19 helicopter visibility reduction below ¾ SM NA.

MISSED APPROACH: Climb to 3000 direct IKEBE and hold.

AWOS-3PT 120.525	ATLANTA APP CON 121.0 268.7	UNICOM 122.7 (CTAF)
----------------------------	---------------------------------------	-------------------------------



CATEGORY	A	B	C	D
LPV DA	1008-1 259 (300-1)			
LNAV MDA	1420-1	671 (700-1)	1420-1½	671 (700-1½)
CIRCLING	1420-1 661 (700-1)	1600-1¼ 841 (900-1¼)	1740-3 981 (1000-3)	2020-3 1261 (1300-3)

SE-4, 22 FEB 2024 to 21 MAR 2024

SE-4, 22 FEB 2024 to 21 MAR 2024

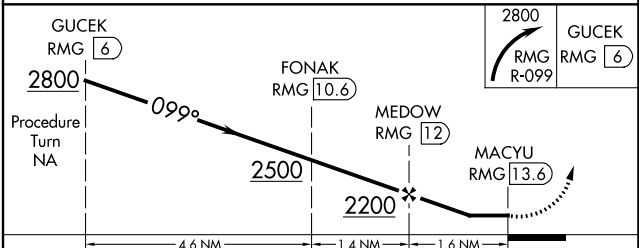
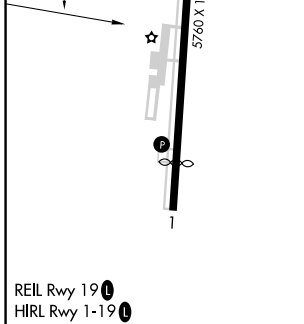
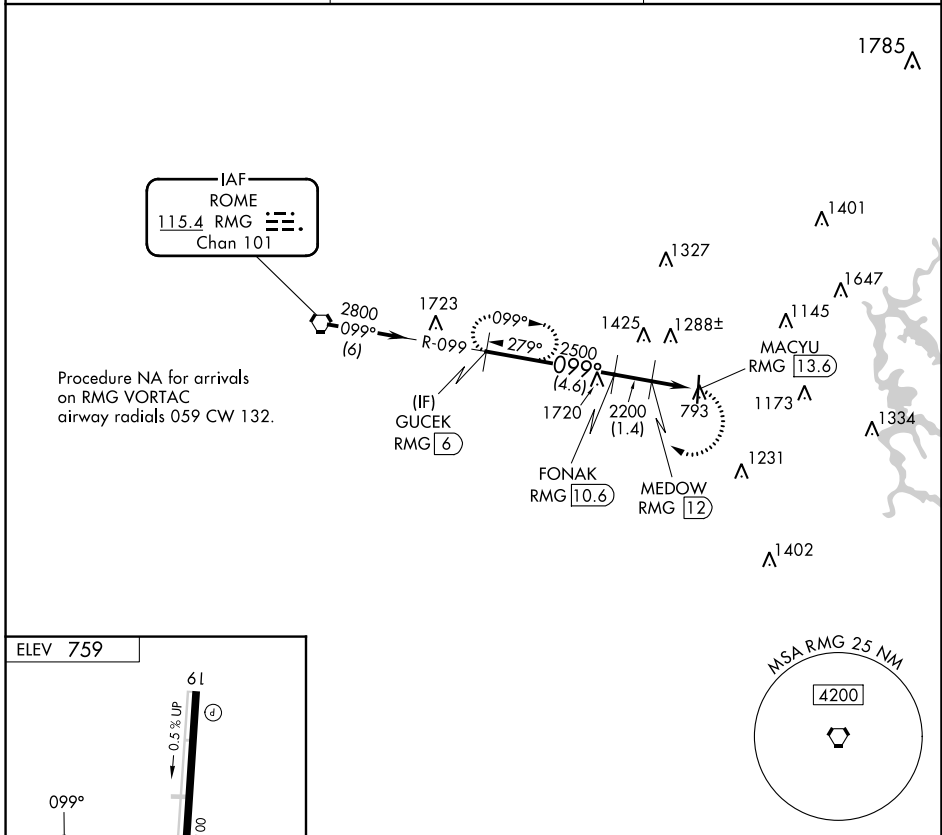
VORTAC RMG 115.4 Chan 101	APP CRS 099°	Rwy Idg TDZE Apt Elev	N/A N/A 759
---	------------------------	-----------------------------	--

VOR-A
CARTERSVILLE (VPC)

⚠ When local altimeter setting not received, use Rome altimeter setting and increase all MDA 80 feet; increase Cat A visibility ¼ SM. DME required.

MISSED APPROACH: Climbing right turn to 2800 on RMG R-099 to GUCEK/6 DME and hold.

AWOS-3PT 120.525	ATLANTA APP CON 121.0 268.7	UNICOM 122.7 (CTAF) 0
----------------------------	---------------------------------------	---------------------------------



CATEGORY	A	B	C	D
CIRCLING	1560-1 801 (900-1)	1600-1¼ 841 (900-1¼)	1740-3 981 (1000-3)	2020-3 1261 (1300-3)

SE-4, 22 FEB 2024 to 21 MAR 2024

SE-4, 22 FEB 2024 to 21 MAR 2024