

RNAV (GPS) RWY 22

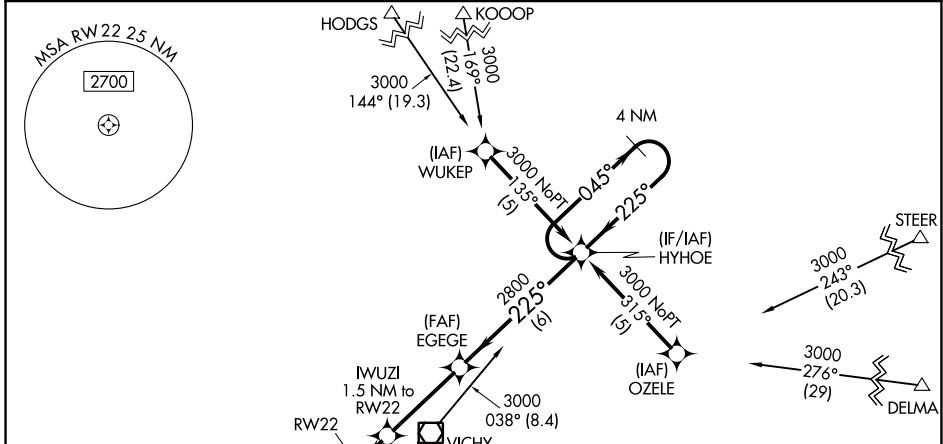
ROLLA NTL (VIH)

WAAS CH 72719 W22A	APP CRS 225°	Rwy ldg TDZE Apt Elev	5500 1117 1148
--	------------------------	-----------------------------	---

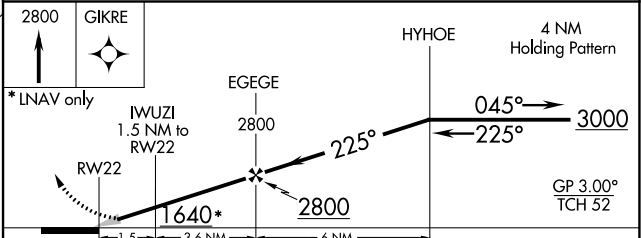
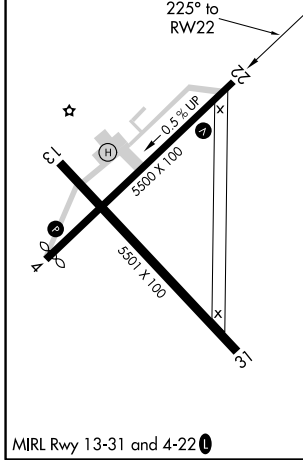
⚠ NA For uncompensated Baro-VNAV systems, LNAV/VNAV NA below -17°C (2°F) or above 46°C (114°F). DME/DME RNP-0.3 NA.

MISSED APPROACH:
Climb to 2800 direct GIKRE and hold.

ASOS 119.025	KANSAS CITY CENTER 128.35 284.675	UNICOM 123.0 (CTAF) 0
------------------------	---	---------------------------------



ELEV 1148	TDZE 1117
-----------	-----------



CATEGORY	A	B	C	D
LPV DA		1367- ³ / ₄	250 (300- ³ / ₄)	
LNAV/VNAV DA		1529-1 ¹ / ₂	412 (400-1 ¹ / ₂)	
LNAV MDA	1520-1	403 (400-1)	1520-1 ¹ / ₄	403 (400-1 ¹ / ₄)
CIRCLING	1700-1	552 (600-1)	1700-1 ¹ / ₂	1740-2 592 (600-2)

NC-3, 08 SEP 2022 to 06 OCT 2022

NC-3, 08 SEP 2022 to 06 OCT 2022

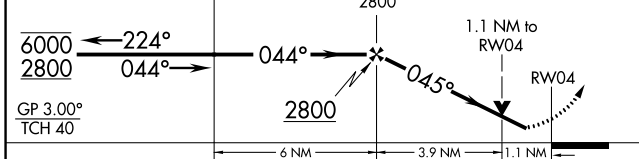
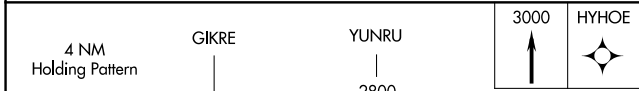
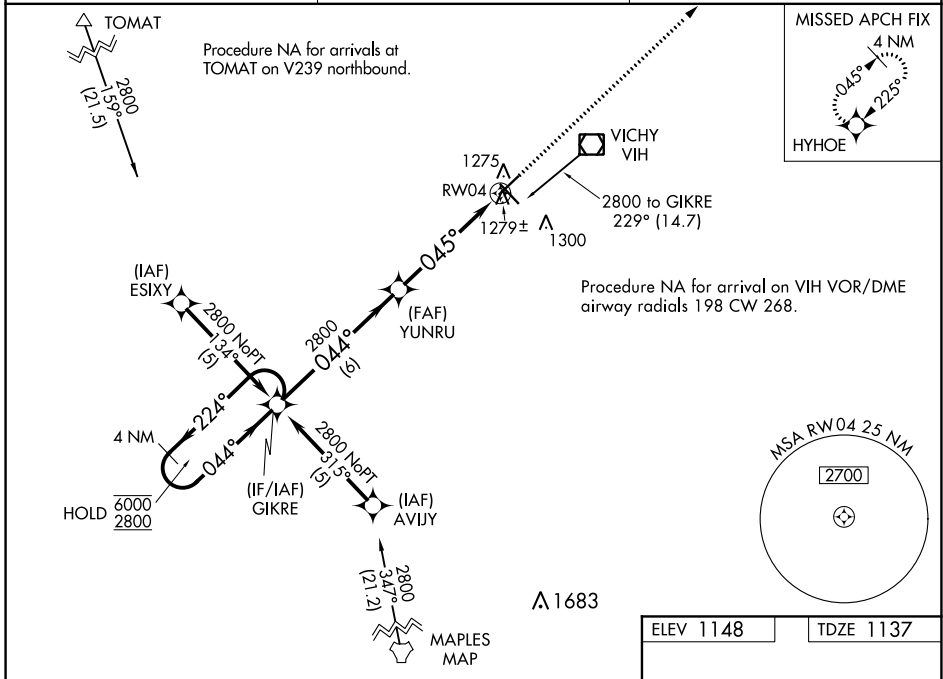
WAAS CH 78119 W04A	APP CRS 045°	Rwy Idg TDZE 1137 Apt Elev 1148
--	------------------------	---

RNAV (GPS) RWY 4

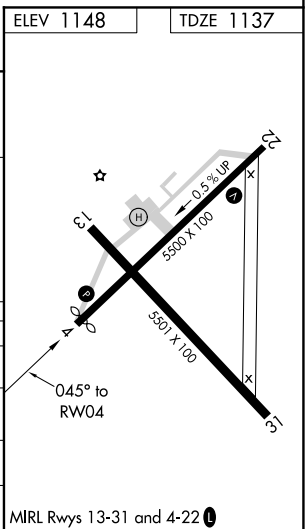
ROLLA NTL (VIH)

RNP APCH-GPS.	MISSED APPROACH: Climb to 3000 direct HYHOE and hold.
---------------	---

ASOS 119,025	KANSAS CITY CENTER 128.35 284.675	UNICOM 123.0 (CTAF) 0
------------------------	---	--



CATEGORY	A	B	C	D
LPV DA	1387-1		250 (300-1)	
LNAV/VNAV DA	1549-1½		412 (500-1½)	
LNAV MDA	1540-1	403 (400-1)	1540-1½	403 (400-1½)
C CIRCLING	1580-1 432 (500-1)	1600-1 452 (500-1)	1600-1½ 452 (500-1½)	1740-2 592 (600-2)



NC-3, 08 SEP 2022 to 06 OCT 2022

NC-3, 08 SEP 2022 to 06 OCT 2022

VOR/DME VIH 117.7 Chan 124	APP CRS 241°	Rwy Idg TDZE Apt Elev	5500 1117 1148
--	------------------------	-----------------------------	---

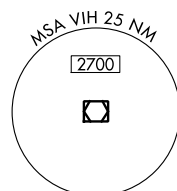
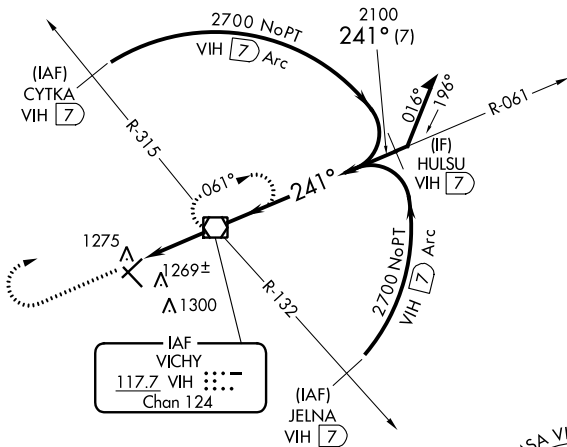
VOR RWY 22

ROLLA NTL (VIH)

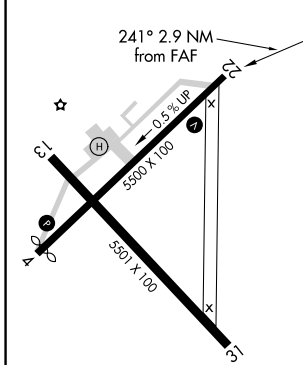
⚠ When local altimeter setting not received, use Fort Leonard Wood altimeter setting; increase all MDA 80 feet and S-22 Cat D and Circling Cat D visibility ¼ SM. VDP NA with Fort Leonard Wood altimeter setting.

MISSED APPROACH: Climb to 2700 then right turn direct VIH VOR/DME and hold.

ASOS 119.025	KANSAS CITY CENTER 128.35 284.675	UNICOM 123.0 (CTAF) 0
------------------------	---	---------------------------------



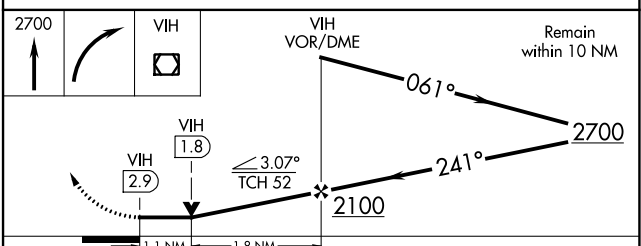
ELEV 1148	TDZE 1117
-----------	-----------



MIRL Rwy 13-31 and 4-22 0

FAF to MAP 2.9 NM

Knots	60	90	120	150	180
Min:Sec	2:54	1:56	1:27	1:10	0:58



CATEGORY	A	B	C	D
S-22	1520-1	403 (400-1)	1520-1¼	403 (400-1¼)
CIRCLING	1600-1	452 (500-1)	1600-1½	1740-2 592 (600-2)

NC-3, 08 SEP 2022 to 06 OCT 2022

NC-3, 08 SEP 2022 to 06 OCT 2022

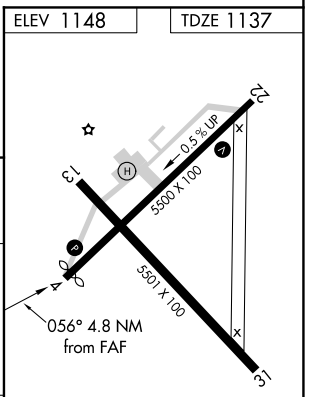
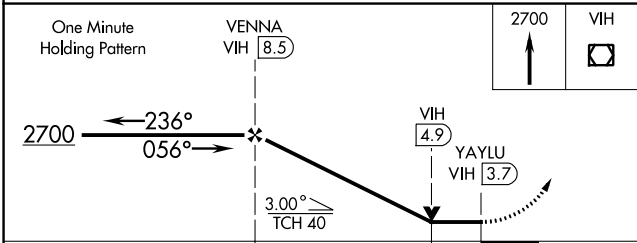
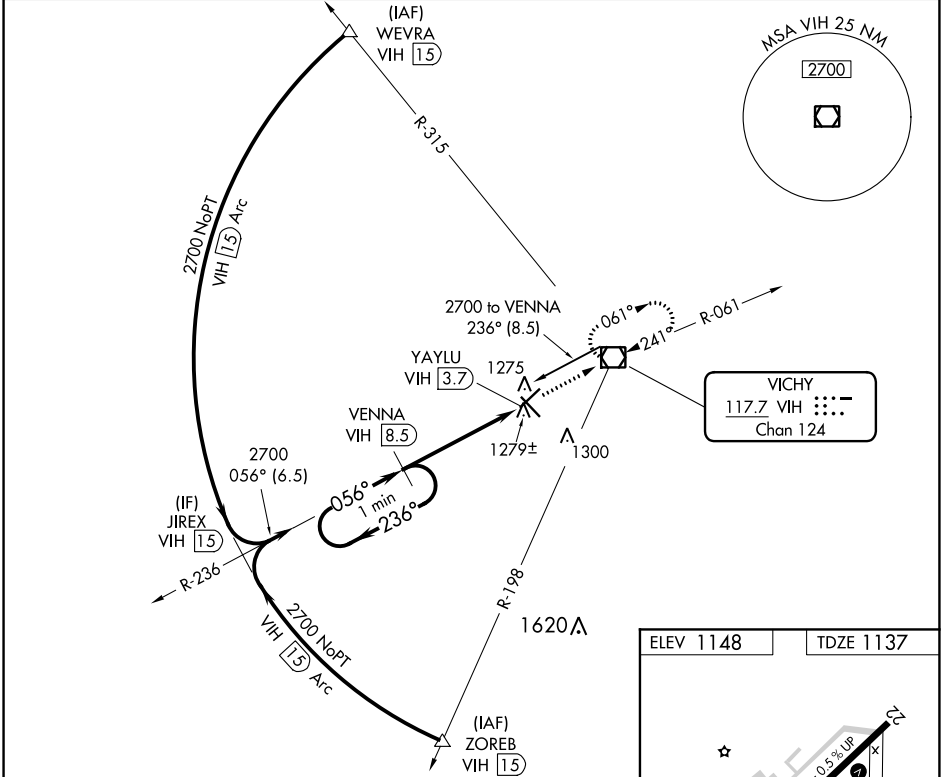
VOR/DME VIH 117.7 Chan 124	APP CRS 056°	Rwy Idg TDZE Apt Elev	5289 1137 1148
--	------------------------	-----------------------------	---

VOR/DME RWY 4
ROLLA NTL (VIH)

⚠ Visibility reduction by helicopters NA. When local altimeter setting not received, use Fort Leonard Wood altimeter setting; increase all MDA 80 feet and S-4 Cat D and Circling Cat D visibility ¼ SM. VDP NA with Fort Leonard Wood altimeter setting.

MISSED APPROACH: Climb to 2700 direct VIH VOR/DME and hold.

ASOS 119.025	KANSAS CITY CENTER 128.35 284.675	UNICOM 123.0 (CTAF) 0
------------------------	---	---------------------------------



CATEGORY	A	B	C	D
S-4	1540-1	403 (400-1)	1540-1¼	403 (400-1¼)
CIRCLING	1600-1	452 (500-1)	1600-1½ 452 (500-1½)	1740-2 592 (600-2)

MIRL Rwy 13-31 and 4-22 0

NC-3, 08 SEP 2022 to 06 OCT 2022

NC-3, 08 SEP 2022 to 06 OCT 2022