

LOC I-VCV 108.75	APP CRS 166°	Rwy Idg TDZE Apt Elev	13052 2830 2885
----------------------------	------------------------	-----------------------------	--

LOC RWY 17

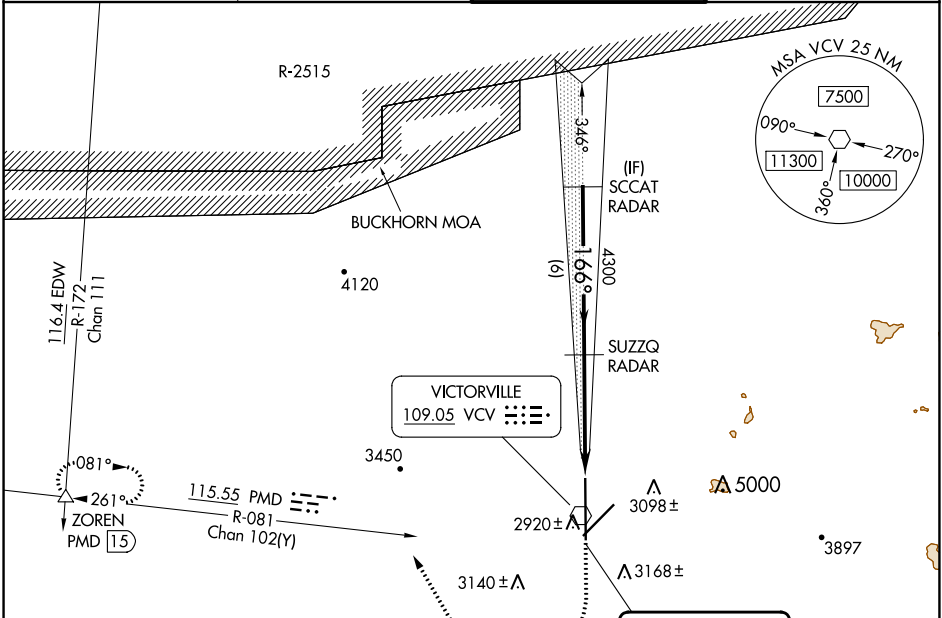
SOUTHERN CALIFORNIA LOGISTICS (VCV)

RADAR required.

⚠ Circling NA for Cats C and D southeast of Rws 35 and 21. When local altimeter setting not received use Edwards AFB altimeter setting and increase all MDAs 160 feet, and Circling visibility Cat C ½ SM.

MISSED APPROACH: Climb to 3500 on 166° then climbing right turn to 6000 on heading 316° and on PMD VORTAC R-081 to ZOREN INT/PMD 15 DME and hold.

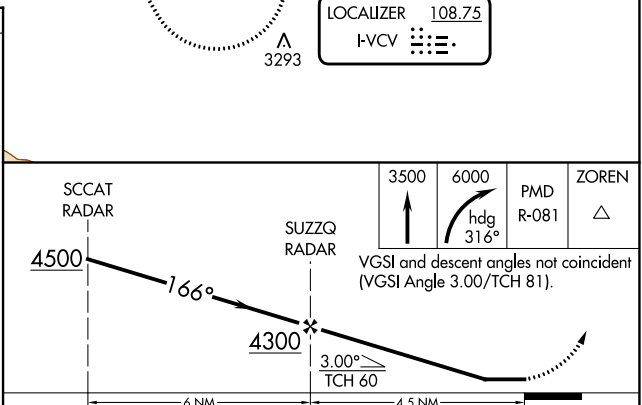
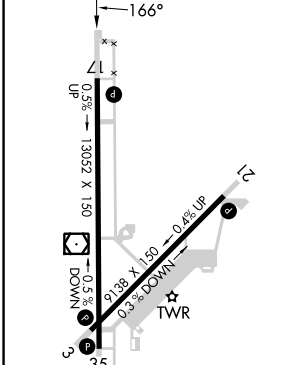
ATIS ★ 135.475	JOSHUA APP CON 124.55 363.0	VICTORVILLE TOWER ★ 118.35(CTAF) 282.225	GND CON 124.45
--------------------------	---------------------------------------	--	--------------------------



SW-3, 22 FEB 2024 to 21 MAR 2024

SW-3, 22 FEB 2024 to 21 MAR 2024

ELEV 2885	D	TDZE 2830
-----------	----------	-----------



	REIL Rws 17 and 35				
	HIRL Rws 3-21 and 17-35				
	FAF to MAP 4.5 NM				
Knots	60	90	120	150	180
Min:Sec	4:30	3:00	2:15	1:48	1:30
CATEGORY	A	B	C	D	
S-LOC 17	3180/55 350 (300-1)				
CIRCLING	3380-1 495 (500-1)	3420-1 535 (600-1)	3460-1½ 575 (600-1½)	3780-3 895 (900-3)	

WAAS CH 77523 W17A	APP CRS 166°	Rwy Idg TDZE Apt Elev	13052 2830 2885
--	------------------------	-----------------------------	--

RNAV (GPS) RWY 17

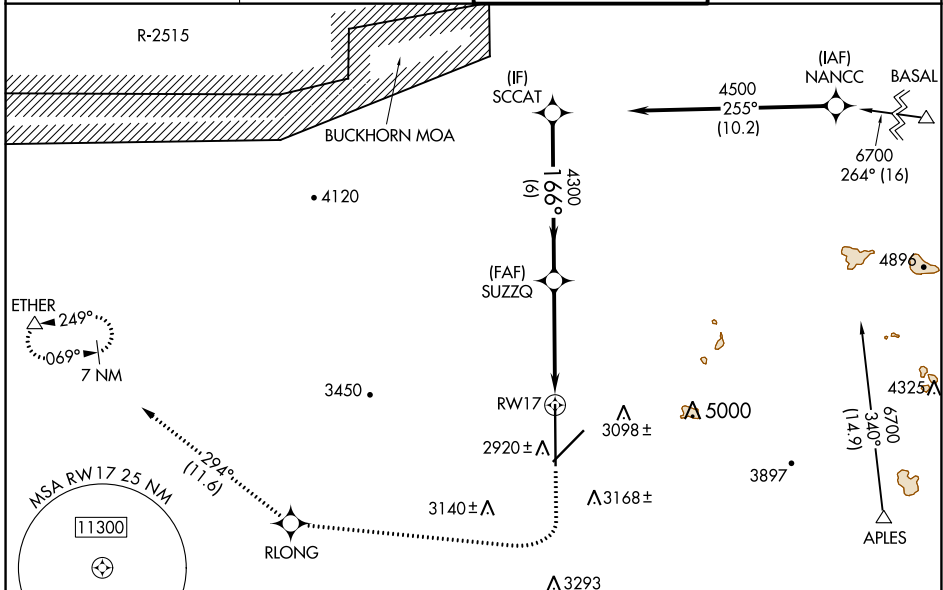
SOUTHERN CALIFORNIA LOGISTICS (V'CV)

RNP APCH - GPS.

⚠ Circling NA for Cats C and D southeast of Rwy 35-21. Baro-VNAV and VDP NA when using Edwards AFB altimeter setting. For uncompensated Baro-VNAV systems, LNAV/VNAV NA below -20°C or above 54°C. When local altimeter setting not received, use Edwards AFB altimeter setting: increase LPV DA to 3183 feet and all visibilities to RVR 5500; increase LNAV/VNAV DA to 3233 feet and all visibilities to RVR 6000. Increase all MDAs 160 feet and Circling visibility Cat C 1/2 SM.

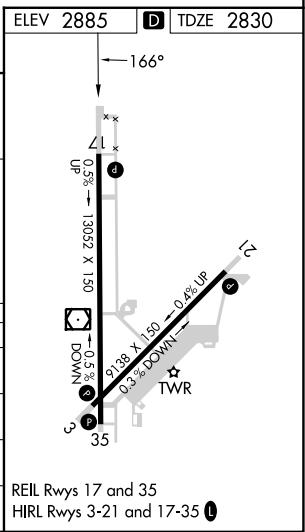
MISSED APPROACH: Climb to 3500 then climbing right turn to 6000 direct RLONG and on track 294° to ETHER and hold.

ATIS * 135.475	JOSHUA APP CON 124.55 363.0	VICTORVILLE TOWER* 118.35 (CTAF) 0 282.225	GND CON 124.45
--------------------------	---------------------------------------	--	--------------------------



VGSI and RNAV glidepath not coincident (VGSI Angle 3.00/TCH 81).

	3500	6000	RLONG	tr 294°	ETHER
SCCAT	4500	4300			
GP 3.00° TCH 60	6 NM	3.6 NM	0.9 NM to RW17		
CATEGORY	A	B	C	D	
LPV DA		3030/40	200 (200-3/4)		
LNAV/VNAV DA		3080/40	250 (200-3/4)		
LNAV MDA		3180/55	350 (300-1)		
CIRCLING	3380-1 495 (500-1)	3420-1 535 (600-1)	3460-1 1/2 575 (600-1 1/2)	3780-3 895 (900-3)	



SW-3, 22 FEB 2024 to 21 MAR 2024

SW-3, 22 FEB 2024 to 21 MAR 2024

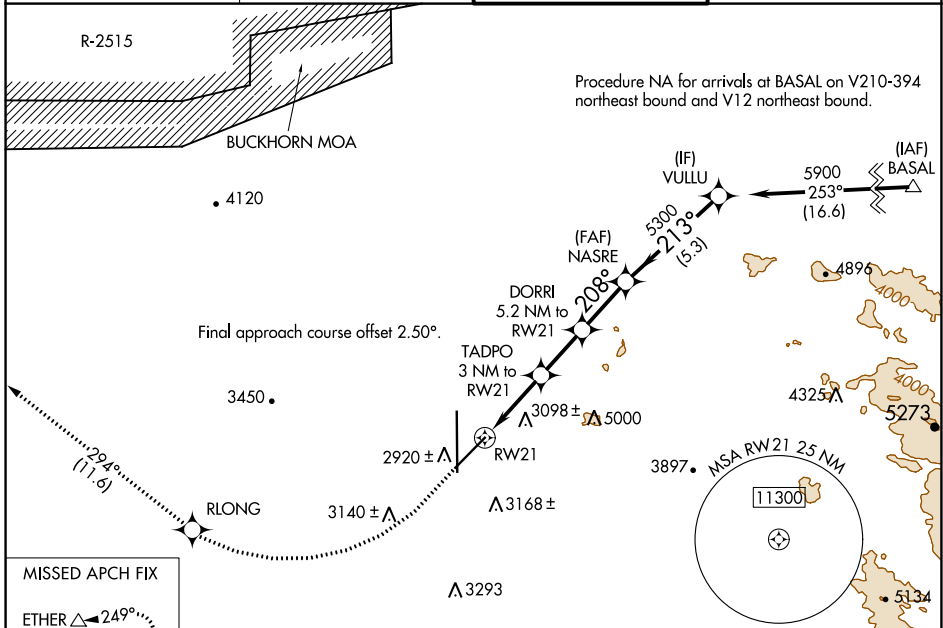
REIL Rwy 17 and 35
HIRL Rwy 3-21 and 17-35

WAAS CH 82246 W21A	APP CRS 208°	Rwy Idg TDZE Apt Elev	9138 2858 2885
--	------------------------	-----------------------------	---

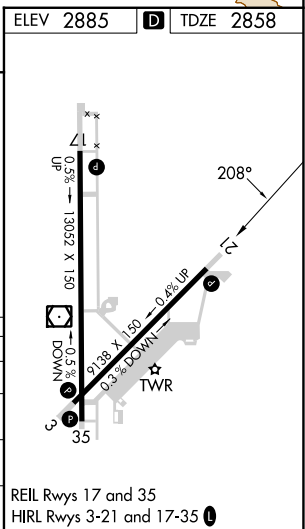
RNAV (GPS) RWY 21

SOUTHERN CALIFORNIA LOGISTICS (V CV)

RNP APCH - GPS.		MISSED APPROACH: Climb to 3500 then climbing right turn to 6000 direct RLONG and on track 294° to ETHER and hold.	
⚠ Circling NA for C and D southeast of Rws 35 and 21. ⚠ For uncompensated Baro-VNAV systems, LNAV/VNAV NA below -20°C or above 54°C.			
ATIS ★ 135.475	JOSHUA APP CON 124.55 363.0	VICTORVILLE TOWER ★ 118.35 (CTAF) 282.225	GND CON 124.45



ELEV 2885	D	TDZE 2858			
3500	6000	RLONG	tr 294°	ETHER	VGSI and RNAV glidepath not coincident (VGSI Angle 3.00/TCH 85).
RW21 1.7 NM to RW21 1.3 NM		TADPO 3 NM to RW21	DORRI 5.2 NM to RW21 5300 208° 4560		VULLU 5900 213° 5300 GP 3.00° TCH 60
1.7 NM		1.3 NM	2.2 NM	2.3 NM	5.3 NM
CATEGORY	A	B	C	D	
LPV DA	3108-1		250 (300-1)		
LNAV/VNAV DA	3153-1		295 (300-1)		
LNAV MDA	3480-1	622 (600-1)	3480-1¾	622 (600-1¾)	
CIRCLING	3480-1	595 (600-1)	3480-1¾	3760-2¾	875 (900-2¾)



SW-3, 22 FEB 2024 to 21 MAR 2024

SW-3, 22 FEB 2024 to 21 MAR 2024

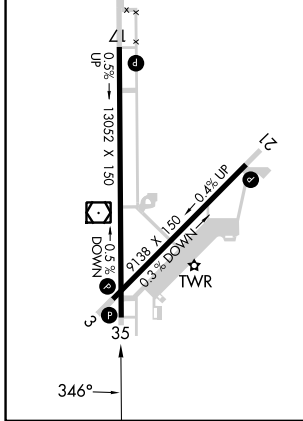
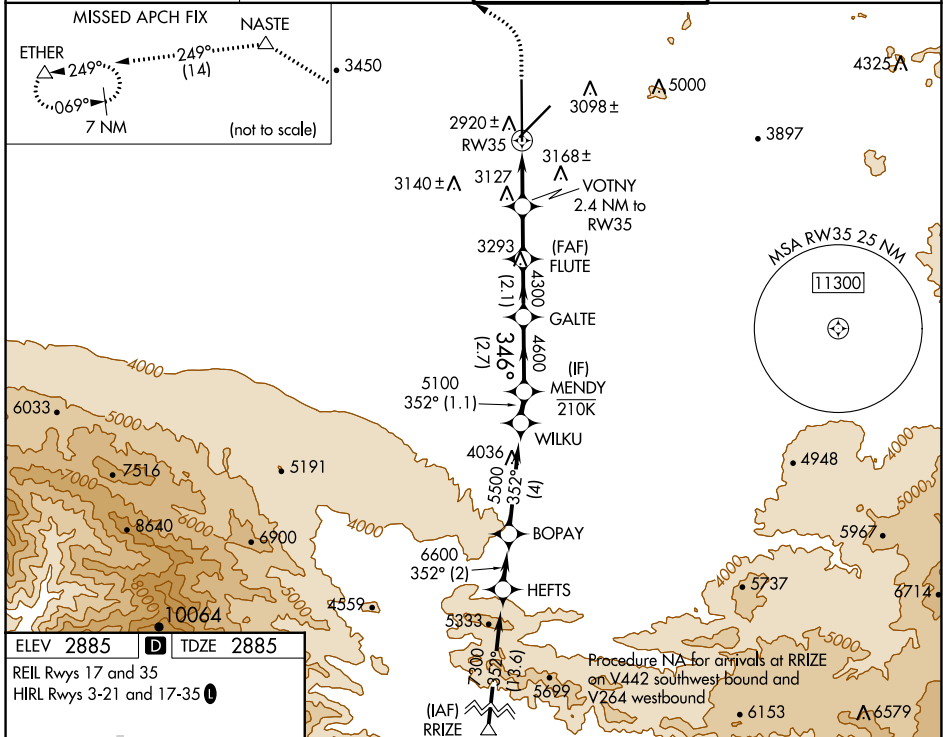
REIL Rws 17 and 35
HIRL Rws 3-21 and 17-35

WAAS CH 97746 W35A	APP CRS 346°	Rwy Idg TDZE 2885 Apt Elev 2885	13052 2885 2885
--	------------------------	---	--

RNAV (GPS) RWY 35

SOUTHERN CALIFORNIA LOGISTICS (V_CV)

RNP APCH - GPS.		MISSED APPROACH: Climb to 3500 then climbing left turn to 6000 direct NASTE and on track 249° to ETHER and hold.	
<p>⚠ Circling NA for C and D southeast of Rws 35 and 21. ⚠ For uncompensated Baro-VNAV systems, LNAV/VNAV NA below -20°C or above 54°C.</p>			
ATIS ★ 135,475	JOSHUA APP CON 124.55 363.0	VICTORVILLE TOWER ★ 118.35(CTAF) 282.225	GND CON 124.45



3500	6000	NASTE	tr 249°	ETHER	VGSIs and RNAV glidepath not coincident (VGSIs Angle 3.00/TCH 64).		
					FLUTE	GALTE	MENDY
					4300	4600	5100
					3700	4300	GP 3.00° TCH 60
					1.4 NM	1 NM	1.9 NM
					2.1 NM	2.7 NM	

CATEGORY	A		B		C		D
LPV DA	3085-1		200 (200-1)				
LNAV/VNAV DA	3411-1½		526 (600-1½)				
LNAV MDA	3380-1		495 (500-1)		3380-1⅓		495 (500-1⅓)
CIRCLING	3380-1 495 (500-1)		3420-1 535 (600-1)		3460-1½ 575 (600-1½)		3760-2¾ 875 (900-2¾)

SW-3, 22 FEB 2024 to 21 MAR 2024

SW-3, 22 FEB 2024 to 21 MAR 2024

VOR/DME VCV 109.05 Chan 27(Y)	APP CRS 170°	Rwy Idg TDZE Apt Elev 13052 2825 2885
--	------------------------	---

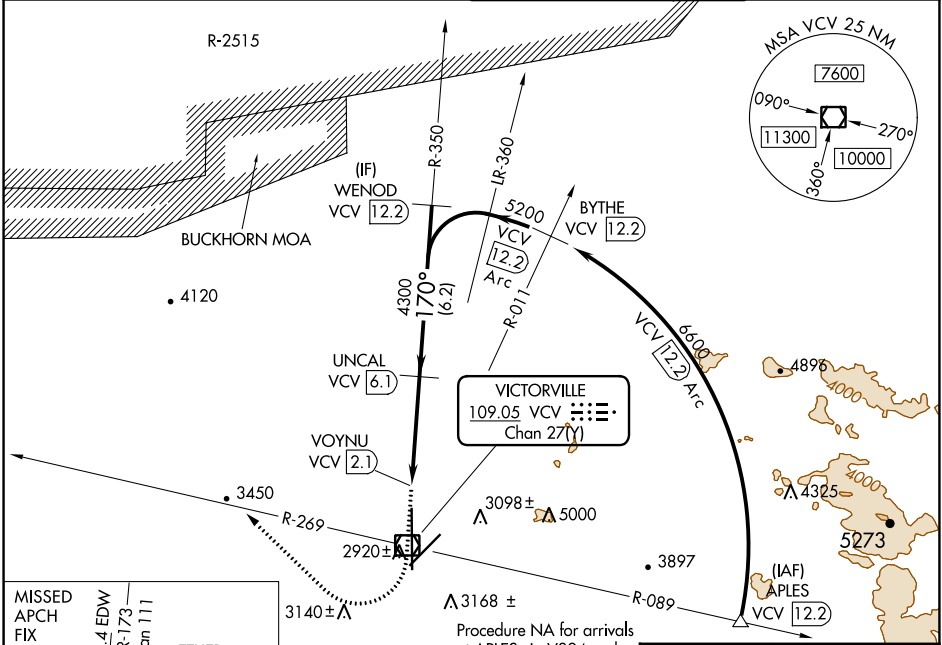
VOR/DME RWY 17

SOUTHERN CALIFORNIA LOGISTICS (VCV)

⚠ When local altimeter setting not received, use Edwards AFB altimeter setting and increase all MDA 160 feet. Increase all visibilities 1/2 mile. Circling NA for Cats C and D southeast of Rwy 35 and 21.

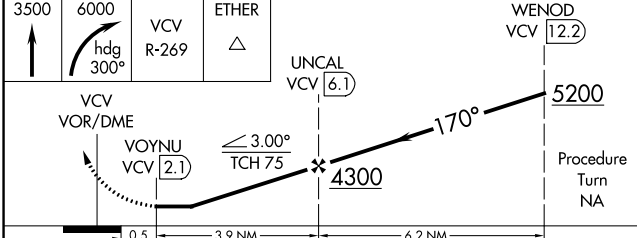
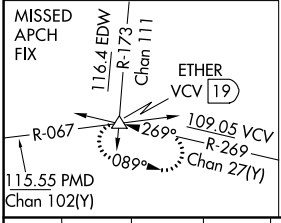
MISSED APPROACH: Climb to 3500, then climbing right turn to 6000 via heading 300° and VCV R-269 to ETHER INT and hold.

ATIS ★ 135.475	JOSHUA APP CON 124.55 363.0	VICTORVILLE TOWER ★ 118.35 (CTAF) 282.225	GND CON 124.45
--------------------------	---------------------------------------	---	--------------------------



SW-3, 22 FEB 2024 to 21 MAR 2024

SW-3, 22 FEB 2024 to 21 MAR 2024



CATEGORY	A	B	C	D
S-17	3200/50	375 (400-1)		3200/60 375 (400-1 1/4)
CIRCLING	3360-1 475 (500-1)	3420-1 535 (600-1)	3580-2 695 (700-2)	3780-3 895 (900-3)

ELEV	2885	TDZE	2825
------	------	------	------

