

WAAS CH 66028 W27A	APP CRS 274°	Rwy Idg TDZE Apt Elev	3882 777 781
--	------------------------	-----------------------------	---

RNAV (GPS) RWY 27

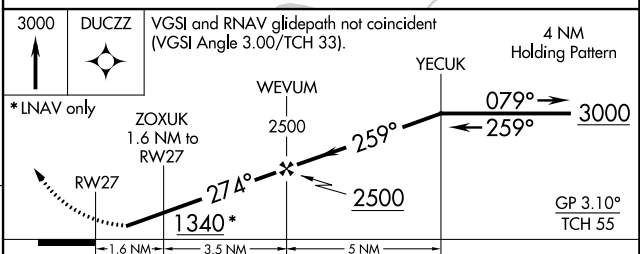
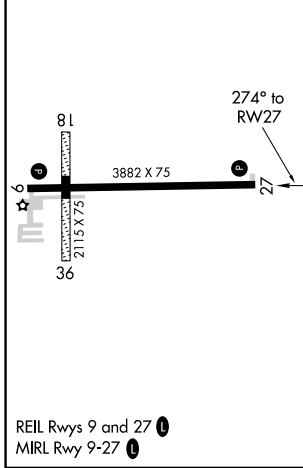
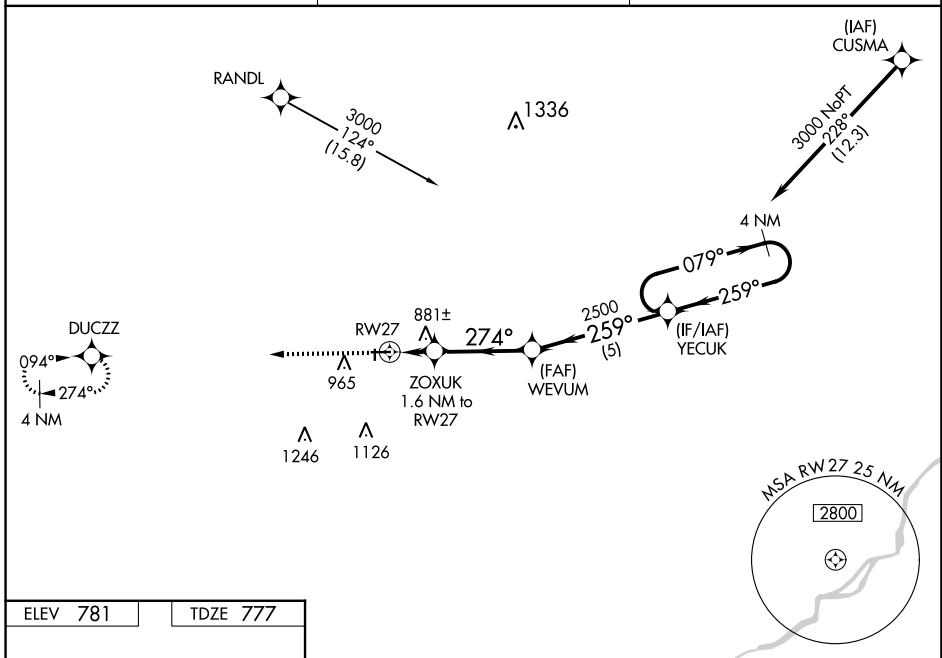
FULTON COUNTY (USE)

RNP APCH - GPS.

▼ For uncompensated Baro-VNAV systems, LNAV/VNAV NA below -16°C or above 54°C. Circling NA to Rwy 18 and 36. Rwy 27 helicopter visibility reduction below 1 SM NA. Procedure NA at night.

MISSED APPROACH:
Climb to 3000 direct DUCZZ and hold.

AWOS-3P 127.375	TOLEDO APP CON 134.35 317.55	UNICOM 123.0 (CTAF)
---------------------------	--	-------------------------------



CATEGORY	A	B	C	D
LPV DA	1092-1 315 (400-1)			
LNAV/VNAV DA	1095-1 318 (400-1)			
LNAV MDA	1180-1	403 (400-1)	1180-1½	403 (400-1½)
CIRCLING	1320-1	539 (600-1)	1480-2 699 (700-2)	1480-2¼ 699 (700-2¼)

EC-2, 22 FEB 2024 to 21 MAR 2024

EC-2, 22 FEB 2024 to 21 MAR 2024

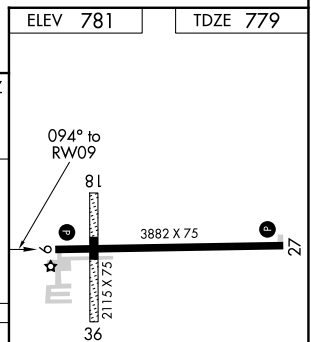
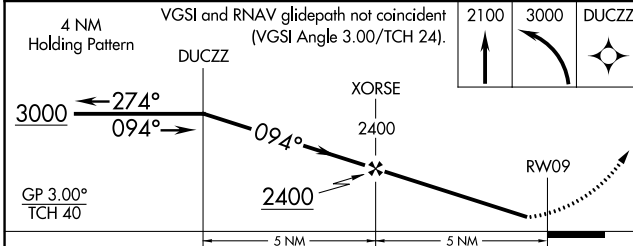
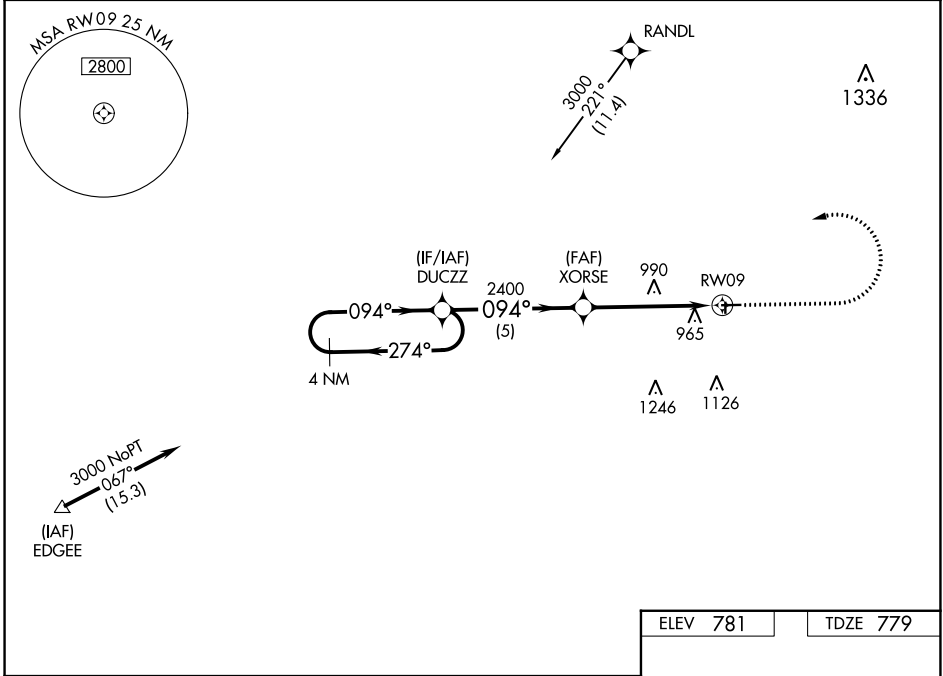
WAAS CH 93828 W09A	APP CRS 094°	Rwy Idg TDZE 779 Apt Elev 781
--	------------------------	---

RNAV (GPS) RWY 9

FULTON COUNTY (USE)

RNP APCH - GPS.	MISSED APPROACH: Climb to 2100 then climbing left turn to 3000 direct DUCZZ and hold.
-----------------	--

AWOS-3P 127.375	TOLEDO APP CON 134.35 317.55	UNICOM 123.0 (CTAF) 0
---------------------------	--	---------------------------------



CATEGORY	A	B	C	D
LPV DA	1109-1		330 (400-1)	
LNAV/VNAV DA	1198-1½		419 (500-1½)	
LNAV MDA	1300-1	521 (600-1)	1300-1½	521 (600-1½)
CIRCLING	1320-1	539 (600-1)	1480-2 699 (700-2)	1480-2¼ 699 (700-2¼)

REIL Rwys 9 and 27 0
MIRL Rwy 9-27 0

EC-2, 22 FEB 2024 to 21 MAR 2024

EC-2, 22 FEB 2024 to 21 MAR 2024