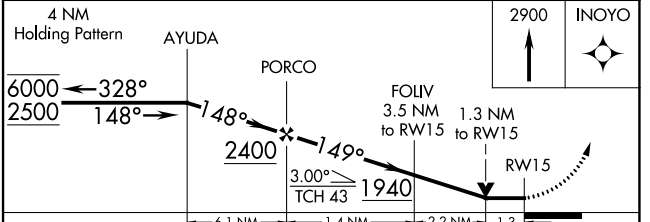
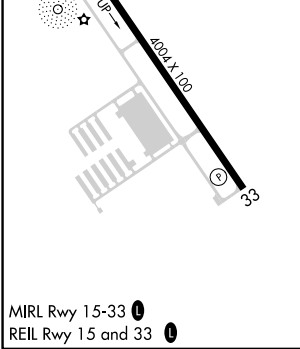
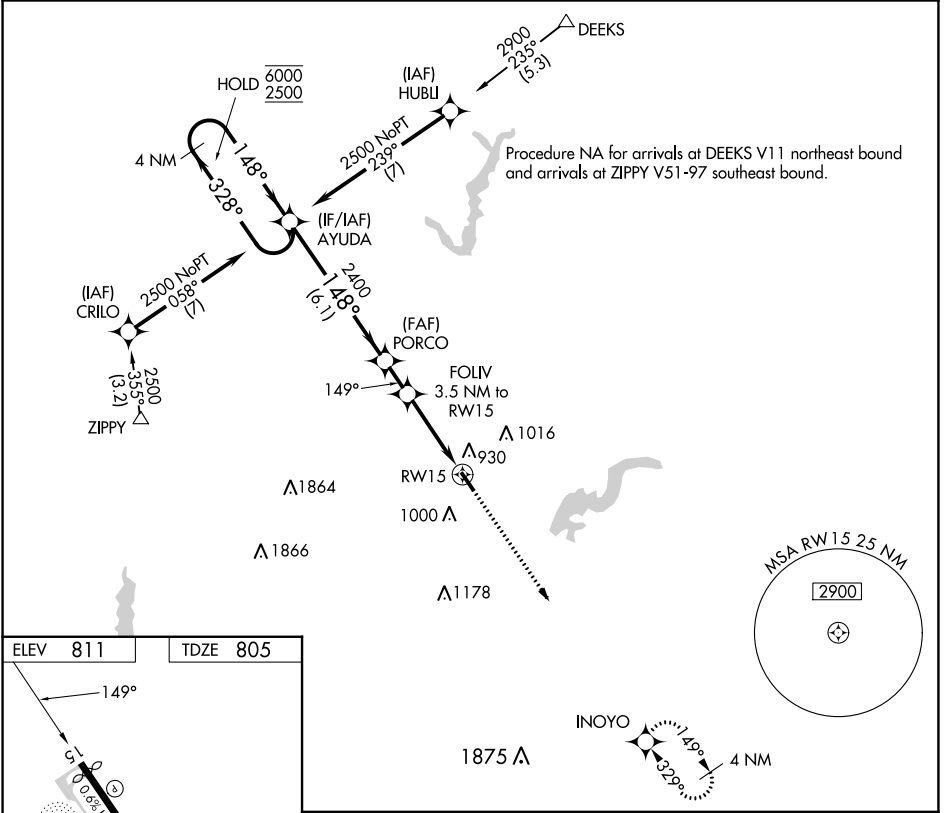


APP CRS	Rwy Idg	3848
149°	TDZE	805
	Apt Elev	811

RNAV (GPS) RWY 15

INDIANAPOLIS METRO (UMP)

RNP APCH - GPS.		MISSED APPROACH: Climb to 2900 direct INOYO and hold.	
AWOS-3PT 119.375	INDIANAPOLIS APP CON 127.15 317.8	CLNC DEL 121.625	UNICOM 123.0 (CTAF) 0



CATEGORY	A	B	C	D
LNVA MDA	1240-1	435 (500-1)	1240-1/4 435 (500-1/4)	NA
C CIRCLING	1320-1 509 (600-1)	1340-1 529 (600-1)	1340-1/2 529 (600-1/2)	NA

EC-2, 22 FEB 2024 to 21 MAR 2024

EC-2, 22 FEB 2024 to 21 MAR 2024

APP CRS 329°	Rwy Idg 4004
	TDZE 811
	Apt Elev 811

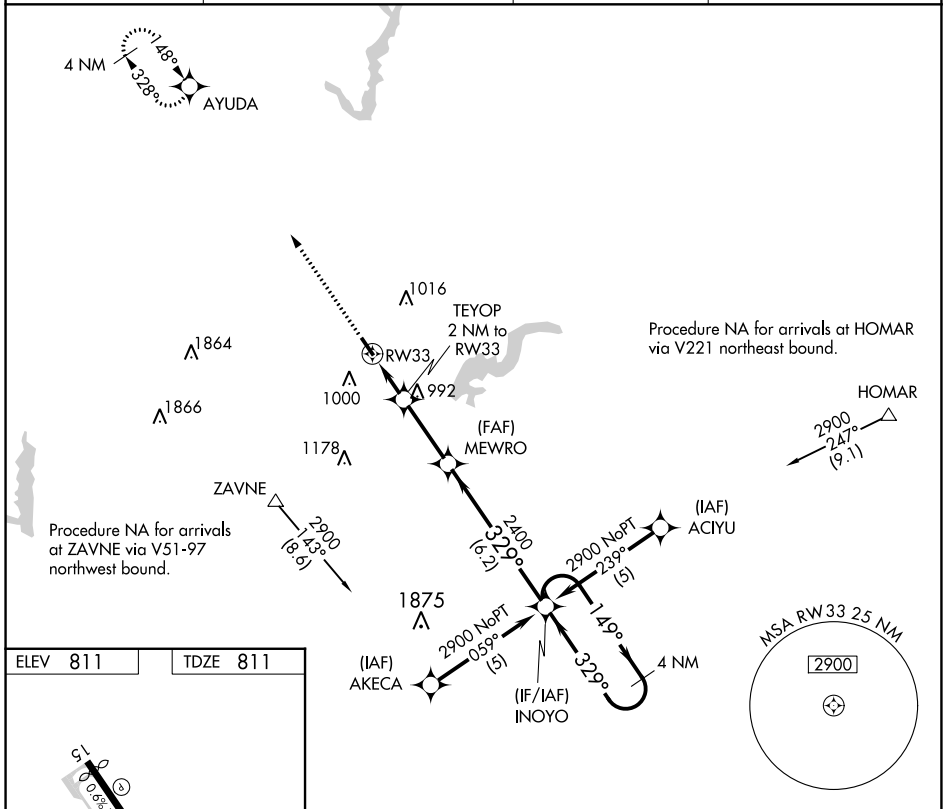
RNAV (GPS) RWY 33

INDIANAPOLIS METRO (UMP)

▽ DME/DME RNP-0.3 NA. When local altimeter setting not received, use Indianapolis Intl altimeter setting and increase all MDA 60 feet and LNAV Cat C visibility ¼ mile. VDP NA when using Indianapolis Intl altimeter setting. Rwy 33 helicopter visibility reduction below ¾ SM NA.

△ NA MISSED APPROACH: Climb to 2500 direct AYUDA and hold.

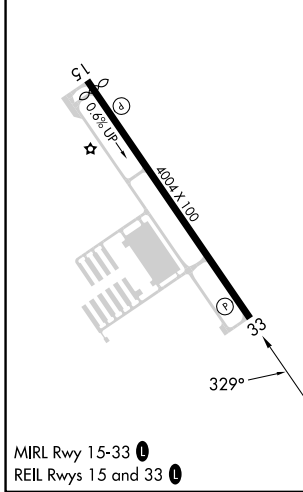
AWOS-3PT 119.375	INDIANAPOLIS APP CON 127.15 317.8	CLNC DEL 121.625	UNICOM 123.0 (CTAF) 0
----------------------------	---	----------------------------	---------------------------------



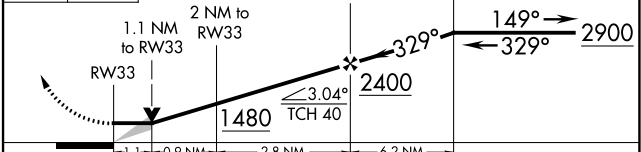
EC-2, 22 FEB 2024 to 21 MAR 2024

EC-2, 22 FEB 2024 to 21 MAR 2024

ELEV 811	TDZE 811
----------	----------



2500 AYUDA VGSIs and descent angles not coincident (VGSi Angle 3.50/TCH 27). INOYO 4 NM Holding Pattern



CATEGORY	A	B	C	D
LNAV MDA	1260-1	449 (500-1)	1260-1¼ 449 (500-1¼)	NA
C CIRCLING	1320-1 509 (600-1)	1340-1 529 (600-1)	1340-1½ 529 (600-1½)	NA

VOR/DME SHB 116.15 Chan 108 (Y)	APP CRS 330°	Rwy Idg 4004 TDZE 811 Apt Elev 811
---	------------------------	---

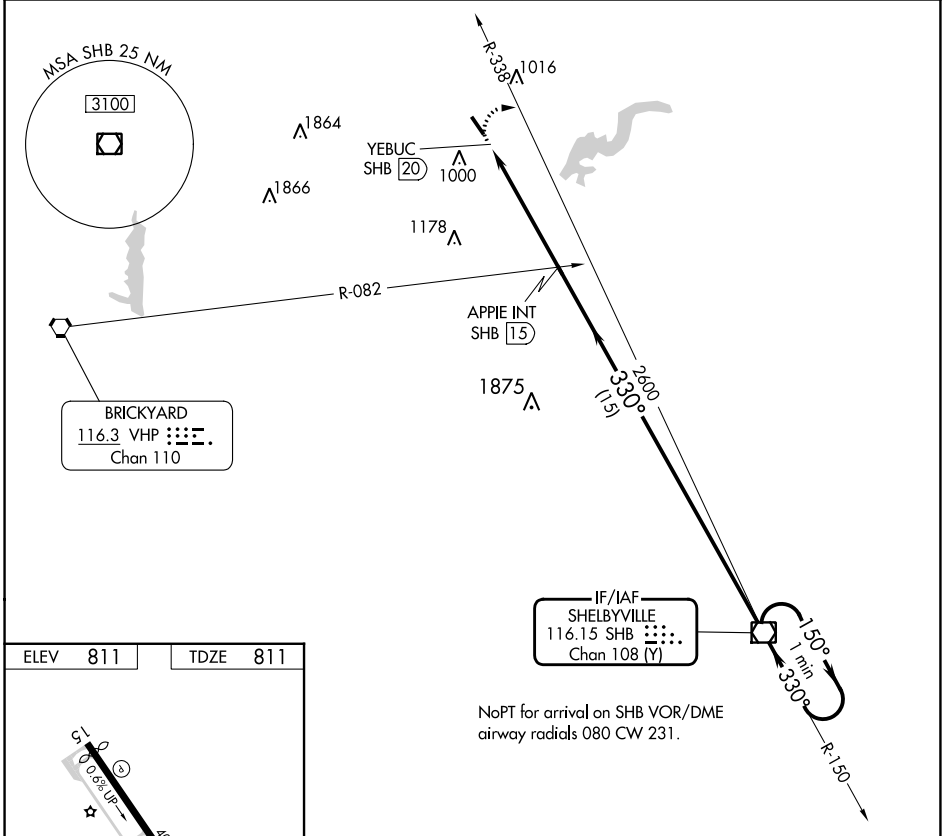
VOR RWY 33

INDIANAPOLIS METRO (UMP)

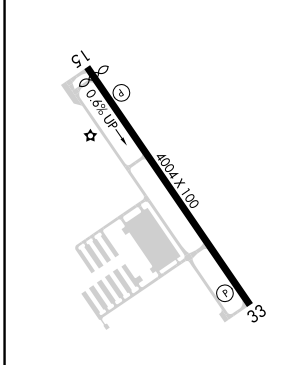
NA When local altimeter setting not received, use Indianapolis Intl altimeter setting and increase all MDA 60 feet, increase S-33 and Circling Cat C visibility to 1 $\frac{3}{4}$. Rwy 33 helicopter visibility reduction below $\frac{3}{4}$ SM NA.

MISSED APPROACH: Climbing right turn to 2600 on SHB VOR/DME R-338 direct SHB VOR/DME and hold.

AWOS-3PT 119.375	INDIANAPOLIS APP CON 127.15 317.8	CLNC DEL 121.625	UNICOM 123.0 (CTAF)
----------------------------	---	----------------------------	-------------------------------



ELEV 811	TDZE 811
-----------------	-----------------



MIRL Rwy 15-33 **1**
REL Rwys 15 and 33 **1**
FAF to MAP 5 NM

Knots	60	90	120	150	180
Min:Sec	5:00	3:20	2:30	2:00	1:40

2600	SHB	APPIE INT SHB (15)	SHB VOR/DME	One Minute Holding Pattern
SHB R-338				
YEBUC SHB (20)		2600	330°	150° → 2600
		≤ 3.00° TCH 40		← 330°
VGSI and descent angles not coincident (VGSI Angle 3.50/TCH 27).				
	0.5	5 NM	15 NM	
CATEGORY	A	B	C	D
S-33	1340-1	529 (600-1)	1340-1 $\frac{1}{2}$ 529 (600-1 $\frac{1}{2}$)	NA
<input checked="" type="checkbox"/> CIRCLING	1340-1	529 (600-1)	1340-1 $\frac{1}{2}$ 529 (600-1 $\frac{1}{2}$)	NA

EC-2, 22 FEB 2024 to 21 MAR 2024

EC-2, 22 FEB 2024 to 21 MAR 2024