

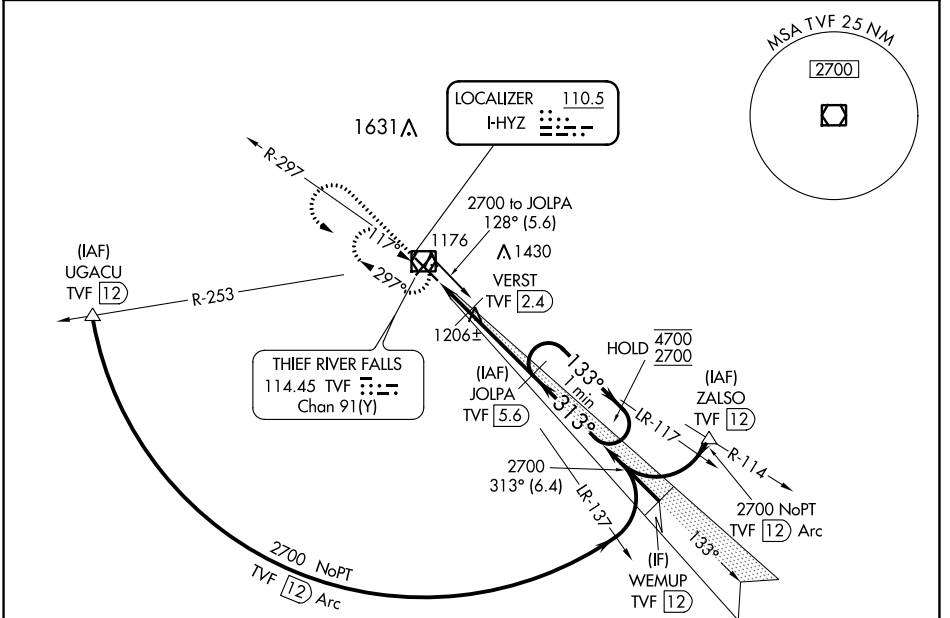
LOC I-HYZ 110.5	APP CRS 313°	Rwy Idg TDZE Apt Elev	6304 1114 1119
---------------------------	------------------------	-----------------------------	---

ILS or LOC RWY 31

THIEF RIVER FALLS RGNL (TVF)

DME required for procedure entry. DME required.	MALSR	MISSED APPROACH: Climb to 2700 then left turn direct TVF VOR/DME and hold.
<p>▼ For inop ALS, increase S-LOC 31 Cat C/D visibility to 1 SM.</p> <p>▲ DME from TVF VOR/DME. Simultaneous reception of I-HYZ and TVF DME required.</p>		

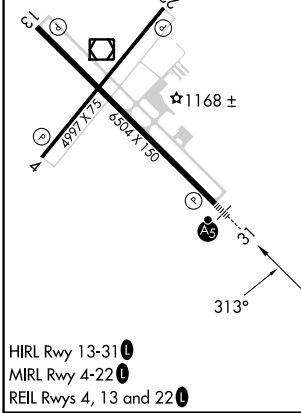
AWOS-3PT 119,025	MINNEAPOLIS CENTER 132.15 269.6	UNICOM 122.8 (CTAF)
----------------------------	---	-------------------------------



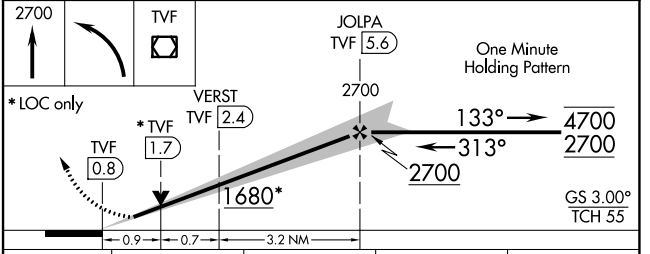
NC-1, 22 FEB 2024 to 21 MAR 2024

NC-1, 22 FEB 2024 to 21 MAR 2024

ELEV 1119	D	TDZE 1114
-----------	---	-----------



HIRL Rwy 13-31
MIRL Rwy 4-22
REIL Rwy 4, 13 and 22



CATEGORY	A	B	C	D
S-ILS 31	1314-1/2 200 (200-1/2)			
S-LOC 31	1460-1/2	346 (400-1/2)	1460-5/8	346 (400-5/8)
C CIRCLING	1540-1 421 (500-1)	1580-1 461 (500-1)	1820-2 701 (800-2)	1980-2 3/4 861 (900-2 3/4)

WAAS CH 72711 W13A	APP CRS 133°	Rwy Idg TDZE 1115 Apt Elev 1119	6504
--	------------------------	---	-------------

RNAV (GPS) RWY 13

THIEF RIVER FALLS RGNL (TVF)

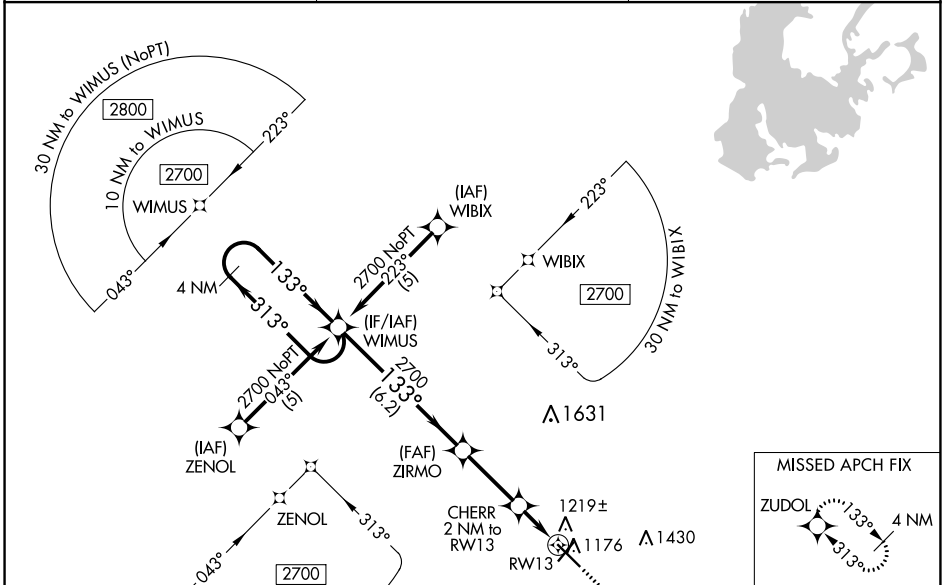
⚠ Baro-VNAV and VDP NA when using Crookston altimeter setting. For uncompensated Baro-VNAV systems, LNAV/VNAV NA below -17°C (2°F) or above 54°C (130°F). DME/DME RNP-0.3 NA.
⚠ When local altimeter setting not received, use Crookston altimeter setting: increase LPV DA to 1447 feet and all visibilities ½ SM; increase LNAV/VNAV DA to 1518 feet and all visibilities ¼ SM; increase all MDAs 100 feet and visibility Cats C and D ¾ SM.

MISSED APPROACH:
Climb to 2700 direct
ZUDOL and hold.

AWOS-3PT
119.025

MINNEAPOLIS CENTER
132.15 269.6

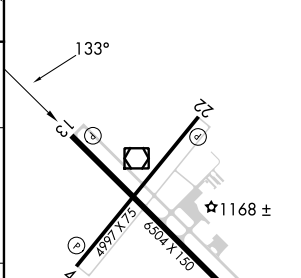
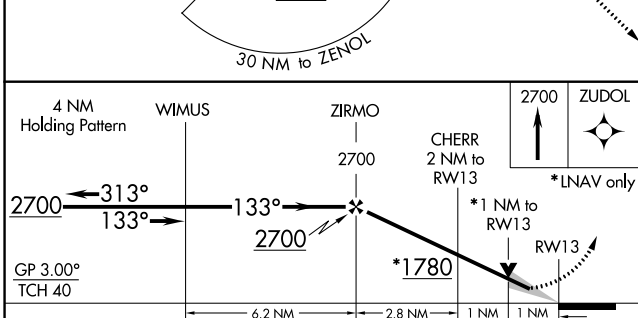
UNICOM
122.8 (CTAF) ①



NC-1, 22 FEB 2024 to 21 MAR 2024

NC-1, 22 FEB 2024 to 21 MAR 2024

ELEV 1119 **D** TDZE 1115



CATEGORY	A	B	C	D
LPV DA	1365-1		250 (300-1)	
LNAV/VNAV DA	1436-1¼		321 (400-1¼)	
LNAV MDA	1480-1		365 (400-1)	
CIRCLING	1540-1	1580-1	1820-2	1480-1¼
	421 (500-1)	461 (500-1)	701 (800-2)	365 (400-1¼)
				1980-2¾
				861 (900-2¾)

HIRL Rwy 13-31 ①
MRL Rwy 4-22 ①
REIL Rws 4, 13 and 22 ①

WAAS CH 77836 W22A	APP CRS 217°	Rwy Idg TDZE Apt Elev	4997 1119 1119
--	------------------------	-----------------------------	---

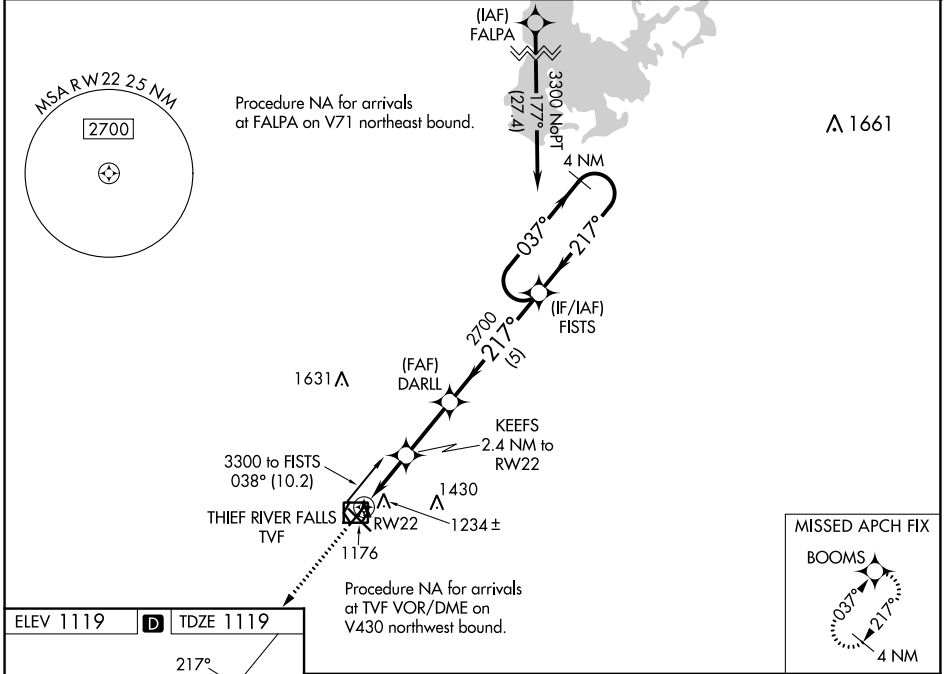
RNAV (GPS) RWY 22

THIEF RIVER FALLS RGNL (TVF)

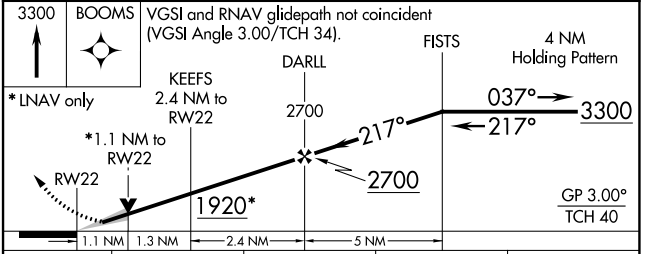
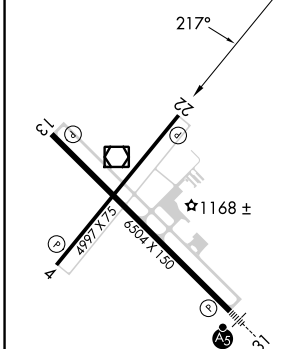
⚠ Baro-VNAV and VDP NA when using Crookston altimeter setting. For uncompensated Baro-VNAV systems, LNAV/VNAV NA below -17°C (2°F) or above 54°C (130°F). DME/DME RNP-0.3 NA. When local altimeter setting not received, use Crookston altimeter setting and increase all DA 82 feet and all MDA 100 feet. Increase LPV all Cats visibility to 1 1/8 mile and LNAV/VNAV all Cats visibility to 1 1/4 mile.

MISSED APPROACH:
Climb 3300 direct
BOOMS and hold.

AWOS-3PT 119.025	MINNEAPOLIS CENTER 132.15 269.6	UNICOM 122.8 (CTAF) 📶
----------------------------	---	--



ELEV 1119	D	TDZE 1119
-----------	----------	-----------



CATEGORY	A	B	C	D
LPV DA	1369-1	250 (300-1)		NA
LNAV/VNAV DA	1396-1	277 (300-1)		NA
LNAV MDA	1500-1	381 (400-1)		NA
C CIRCLING	1540-1 421 (500-1)	1580-1 461 (500-1)		NA

- HIRL Rwy 13-31 **📶**
- MIRL Rwy 4-22 **📶**
- REIL Rwy 4, 13 and 22 **📶**

NC-1, 22 FEB 2024 to 21 MAR 2024

NC-1, 22 FEB 2024 to 21 MAR 2024

WAAS CH 69311 W31A	APP CRS 313°	Rwy Idg TDZE Apt Elev	6304 1114 1119
--	------------------------	-----------------------------	---

RNAV (GPS) RWY 31

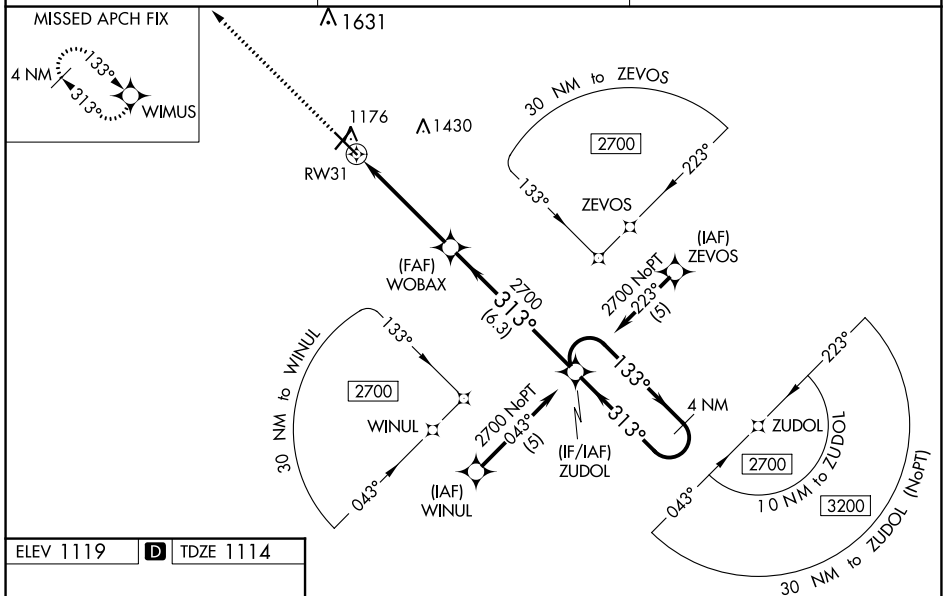
THIEF RIVER FALLS RGNL (TVF)

⚠ Baro-VNAV and VDP NA when using Crockston altimeter setting. For uncompensated Baro-VNAV systems, LNAV/VNAV NA below -17°C (2°F) or above 54°C (130°F). DME/DME RNP-0.3 NA. When local altimeter setting not received, use Crockston altimeter setting: increase LPV DA to 1446 feet and all visibilities ½ SM; increase LNAV/VNAV DA to 1510 feet and all visibilities ¾ SM; increase all MDAs 100 feet and visibility Cats C and D ¼ SM. For inoperative MALSRS, increase LNAV Cats C/D visibility to 1¾ mile. For inoperative MALSRS, when using Crockston altimeter setting, increase LPV all Cats visibility to 1¾ mile, LNAV/VNAV all Cats visibility to 1¼ mile, LNAV Cats C/D visibility to 1¾ mile.

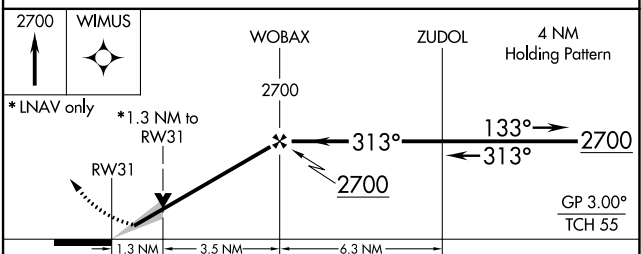
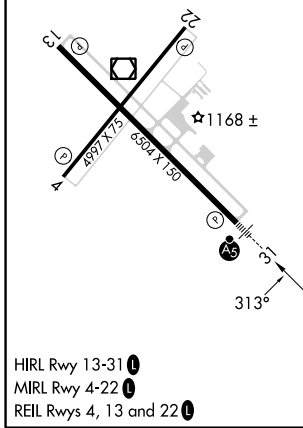


MISSED APPROACH:
Climb to 2700 direct WIMUS and hold.

AWOS-3PT 119.025	MINNEAPOLIS CENTER 132.15 269.6	UNICOM 122.8 (CTAF)
----------------------------	---	-------------------------------



ELEV 1119	D	TDZE 1114
-----------	----------	-----------



CATEGORY	A	B	C	D
LPV DA		1364-½	250 (300-½)	
LNAV/VNAV DA		1428-½	314 (400-½)	
LNAV MDA	1580-½	466 (500-½)	1580-1	466 (500-1)
C CIRCLING	1580-1	461 (500-1)	1820-2 701 (800-2)	1980-2¾ 861 (900-2¾)

NC-1, 22 FEB 2024 to 21 MAR 2024

NC-1, 22 FEB 2024 to 21 MAR 2024

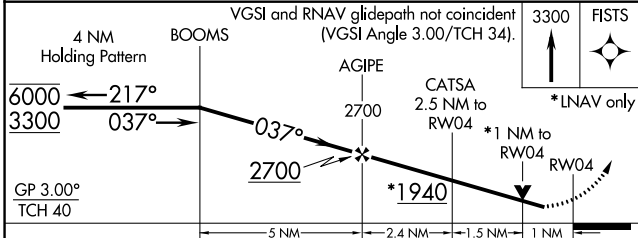
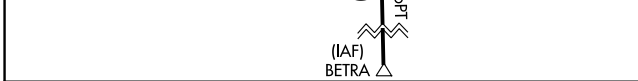
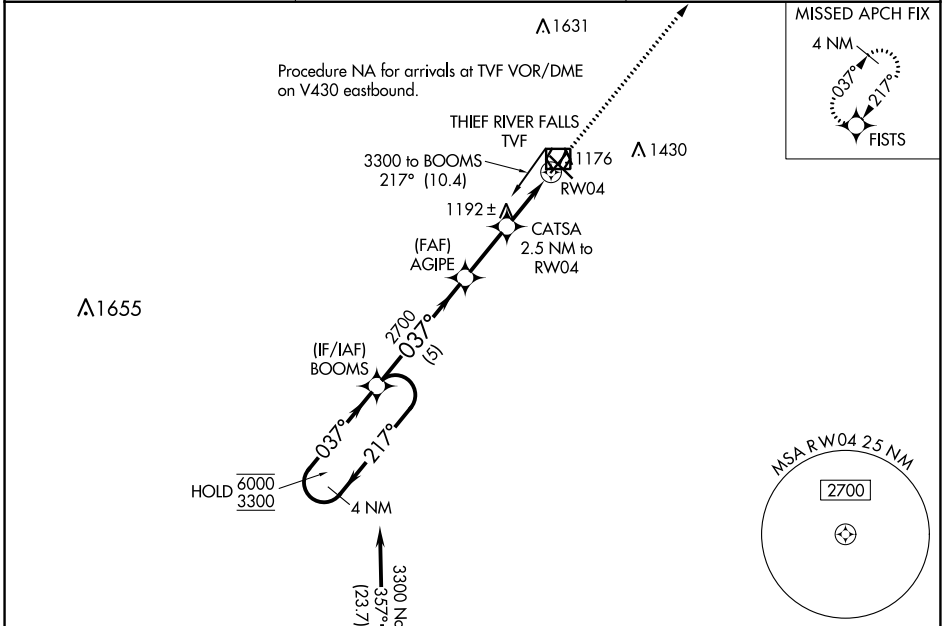
WAAS CH 70636 W04A	APP CRS 037°	Rwy Idg TDZE 1116 Apt Elev 1119	4997
--	------------------------	---	-------------

RNAV (GPS) RWY 4

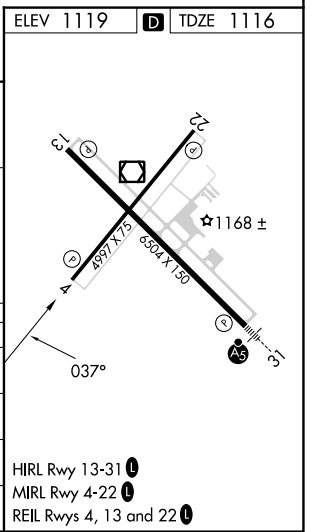
THIEF RIVER FALLS RGNL (TVF)

RNP APCH.	MISSED APPROACH: Climb to 3300 direct FISTS and hold.
-----------	---

AWOS-3PT 119.025	MINNEAPOLIS CENTER 132.15 269.6	UNICOM 122.8(CTAF) 0
----------------------------	---	--------------------------------



CATEGORY	A	B	C	D
LPV DA	1366-1	250 (300-1)		NA
LNAV/VNAV DA	1366-1	250 (300-1)		NA
LNAV MDA	1460-1	344 (400-1)		NA
CIRCLING	1540-1 421 (500-1)	1580-1 461 (500-1)		NA



NC-1, 22 FEB 2024 to 21 MAR 2024

NC-1, 22 FEB 2024 to 21 MAR 2024

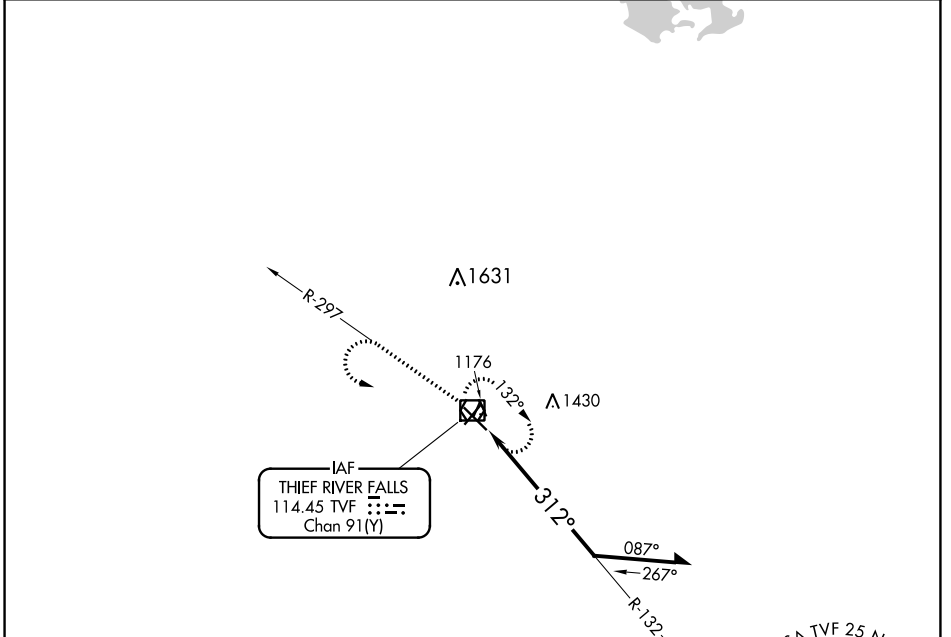
VOR/DME TVF 114.45 Chan 91(Y)	APP CRS 312°	Rwy Idg TDZE Apt Elev	6304 1114 1119
---	------------------------	-----------------------------	---

VOR RWY 31

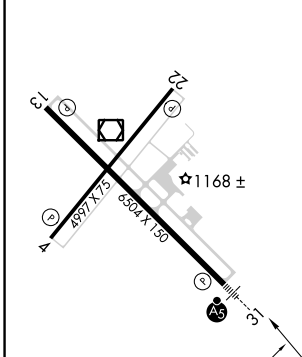
THIEF RIVER FALLS RGNL (TVF)

		MISSED APPROACH: Climb to 2700 on TVF R-297 then left turn direct TVF VOR/DME and hold.

AWOS-3PT 119.025	MINNEAPOLIS CENTER 132.15 269.6	UNICOM 122.8 (CTAF)
----------------------------	---	-------------------------------



ELEV 1119	D	TDZE 1114
-----------	----------	-----------



HIRL Rwy 13-31	1
MIRL Rwy 4-22	1
REIL Rwy 4, 13, and 22	1

2700		TVF VOR/DME	Remain within 10 NM
TVF R-297			

CATEGORY	A	B	C	D
S-31	1660-1/2	546 (600-1/2)	1660-1 1/8	546 (600-1 1/8)
C CIRCLING	1660-1	541 (600-1)	1820-2 701 (800-2)	1980-2 3/4 861 (900-2 3/4)

NC-1, 22 FEB 2024 to 21 MAR 2024

NC-1, 22 FEB 2024 to 21 MAR 2024

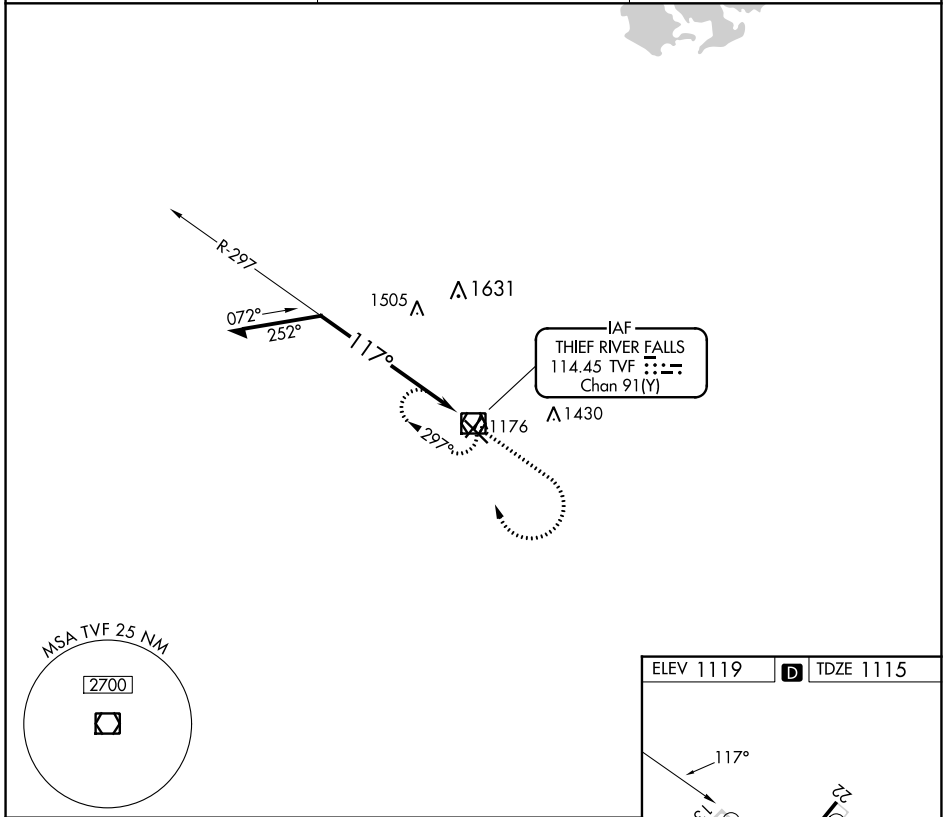
VOR/DME TVF 114.45 Chan 91(Y)	APP CRS 117°	Rwy Idg TDZE 1115 Apt Elev 1119	6504
---	------------------------	---	-------------

VOR Y RWY 13

THIEF RIVER FALLS RGNL (TVF)

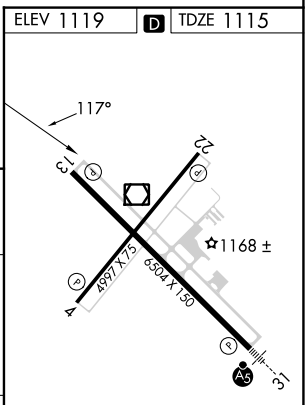
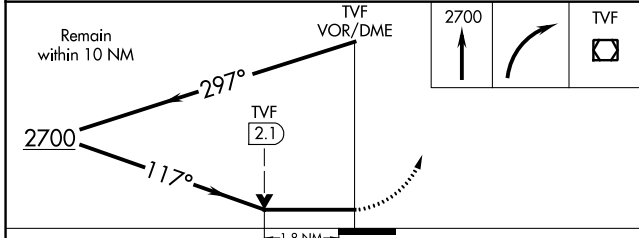
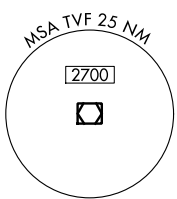
⚠ Circling to Rwy 4/22 NA at night. MISSED APPROACH: Climb to 2700 then right turn direct TVF VOR/DME and hold.

AWOS-3PT 119.025	MINNEAPOLIS CENTER 132.15 269.6	UNICOM 122.8 (CTAF) 📞
----------------------------	---	--



NC-1, 22 FEB 2024 to 21 MAR 2024

NC-1, 22 FEB 2024 to 21 MAR 2024



CATEGORY	A	B	C	D
S-13	1740-1 625 (700-1)		1740-1 ³ / ₄ 625 (700-1 ³ / ₄)	1740-2 625 (700-2)
C CIRCLING	1740-1 621 (700-1)		1820-2 701 (800-2)	1980-2 ³ / ₄ 861 (900-2 ³ / ₄)

HIRL Rwy 13-31 **📞**
MIRL Rwy 4-22 **📞**
REIL Rws 4, 13, and 22 **📞**

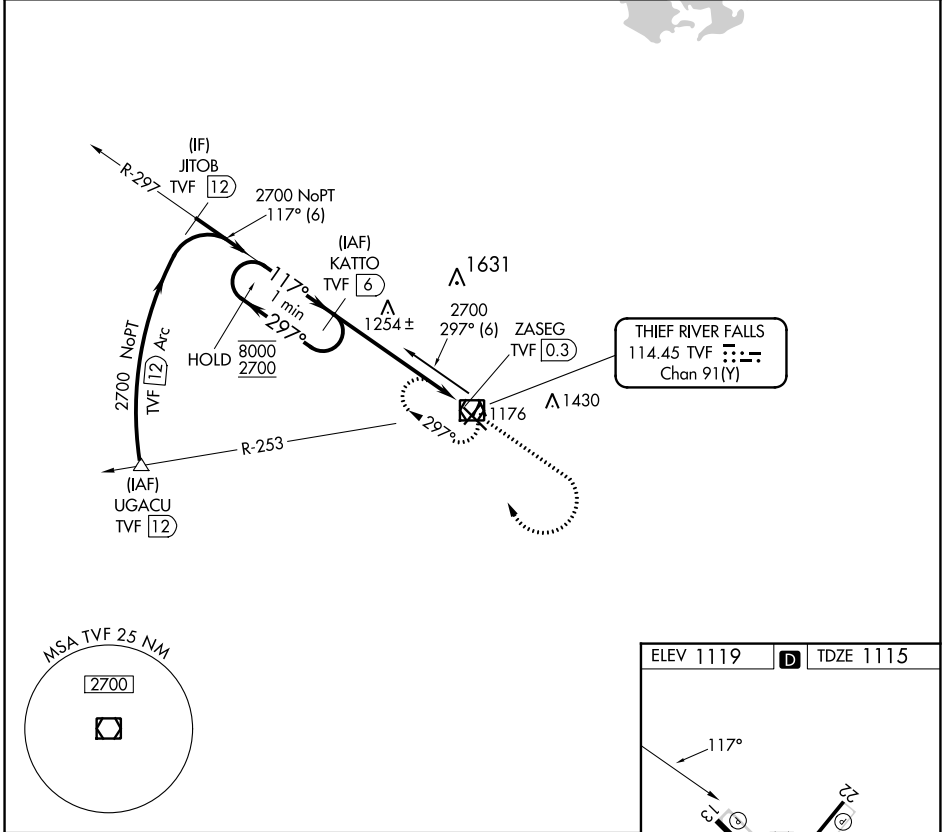
VOR/DME TVF 114.45 Chan 91(Y)	APP CRS 117°	Rwy Idg TDZE 1115 Apt Elev 1119	6504
---	------------------------	---	-------------

VOR Z RWY 13

THIEF RIVER FALLS RGNL (TVF)

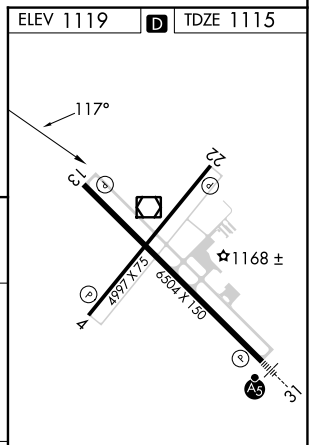
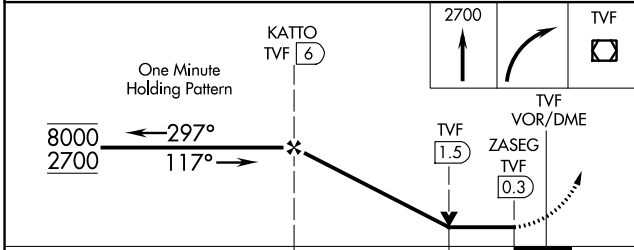
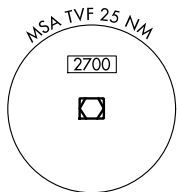
DME required.	MISSED APPROACH: Climb to 2700 then right turn direct TVF VOR/DME and hold.
---------------	---

AWOS-3PT 119.025	MINNEAPOLIS CENTER 132.15 269.6	UNICOM 122.8 (CTAF)
----------------------------	---	-------------------------------



NC-1, 22 FEB 2024 to 21 MAR 2024

NC-1, 22 FEB 2024 to 21 MAR 2024



CATEGORY	A	B	C	D
S-13	1520-1	405 (500-1)	1520-1¼	405 (500-1¼)

HIRL Rwy 13-31
MRL Rwy 4-22
REL Rws 4, 13, and 22