

LOC/DME I-TOI 108.9 Chan 26	APP CRS 074°	Rwy Idg TDZE Apt Elev 6197 389 397
--	------------------------	--

ILS or LOC RWY 7

TROY MUNI AT N KENNETH CAMPBELL FLD (TOI)

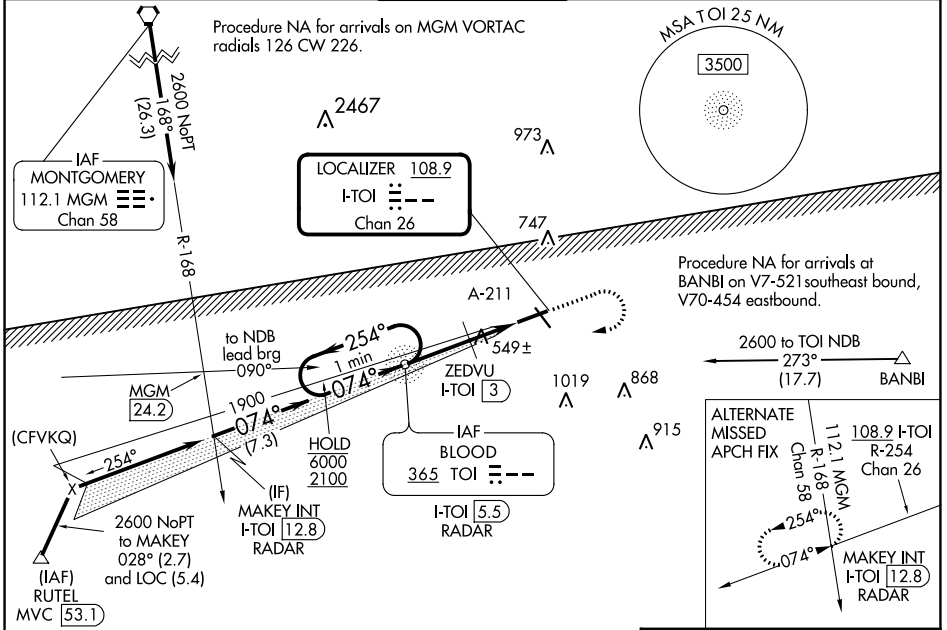
ADF required.

⚠ Circling Rwy 14, 32 NA at night.

ASR/PAR

MISSED APPROACH: Climb to 1300 then climbing right turn to 2600 direct TOI NDB/I-TOI 5.5 DME/RADAR and hold.

ATIS 120.925	CAIRNS APP CON ★ 121.1 319.25	TROY TOWER ★ 124.3 (CTAF) 306.9	GND CON 121.9 294.7	UNICOM 122.8
------------------------	---	---	-------------------------------	------------------------



One Minute Holding Pattern

TOI NDB I-TOI 5.5 RADAR

6000 ← 254°
2100 → 074°

1831

ZEDVU I-TOI 3

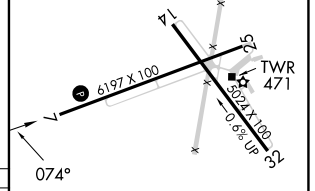
I-TOI 2.3

I-TOI 1.1

GS 3.00° TCH 44

2.5 NM | 0.7 NM | 1.2 NM

ELEV 397	TDZE 389
----------	----------



CATEGORY	A	B	C	D
S-ILS 7	635-7/8 246 (300-7/8)			
S-LOC 7	1000-1	611 (700-1)	1000-1 3/4	611 (700-1 3/4)
C CIRCLING	1000-1	603 (700-1)	1300-2 3/4 903 (1000-2 3/4)	1380-3 983 (1000-3)
ZEDVU FIX MINIMUMS (DME REQUIRED)				
S-LOC 7	800-1	411 (500-1)	800-1 1/2	411 (500-1 1/2)
C CIRCLING	1000-1	603 (700-1)	1300-2 3/4 903 (1000-2 3/4)	1380-3 983 (1000-3)

MIRL Rwy 7-25 and 14-32 **Ⓛ**

FAF to MAP 4.4 NM

Knots	60	90	120	150	180
Min:Sec	4:24	2:56	2:12	1:46	1:28

SE-4, 22 FEB 2024 to 21 MAR 2024

SE-4, 22 FEB 2024 to 21 MAR 2024

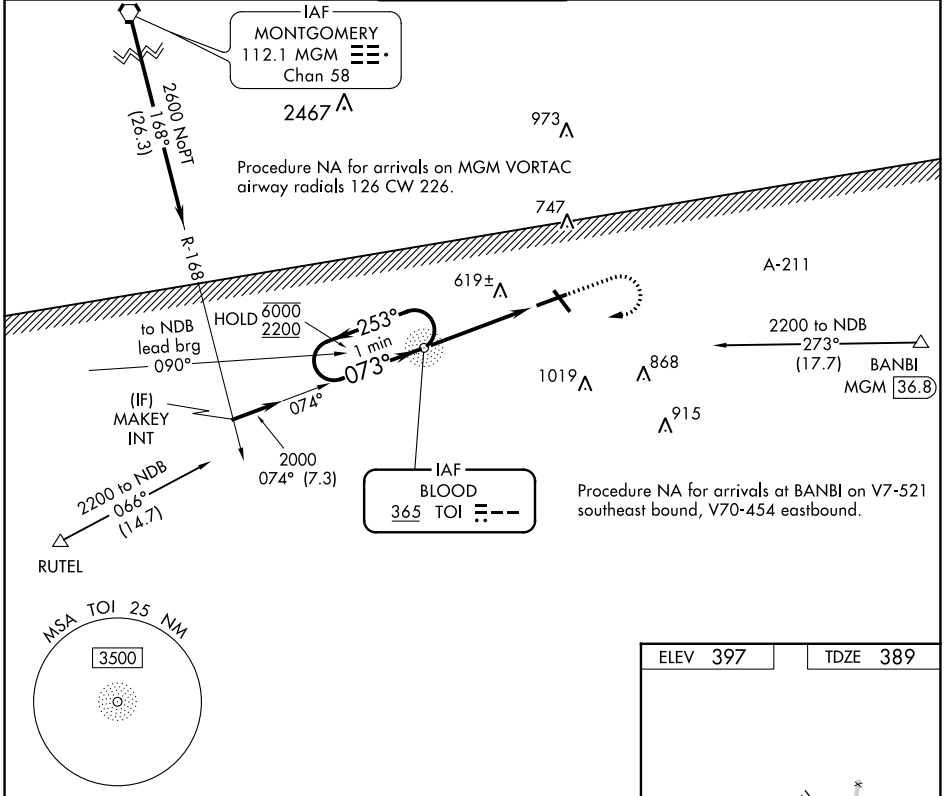
NDB TOI 365	APP CRS 073°	Rwy ldg TDZE Apt Elev	6197 389 397
-----------------------	------------------------	-----------------------------	---

NDB RWY 7

TROY MUNI AT N KENNETH CAMPBELL FLD (TOI)

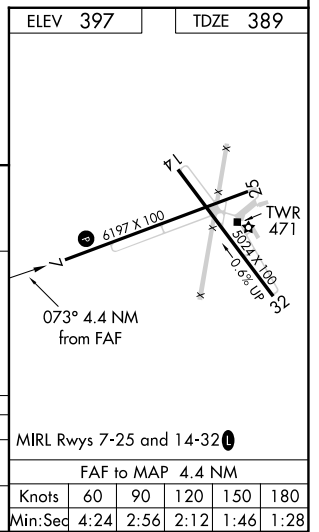
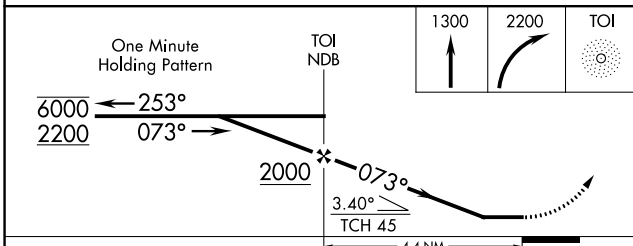
ASR/PAR Circling Rwy 14, 32 NA at night. MISSED APPROACH: Climb to 1300 then climbing right turn to 2200 direct TOI NDB and hold.

ATIS 120.925	CAIRNS APP CON★ 121.1 319.25	TROY TOWER★ 124.3 (CTAF) 306.9	GND CON 121.9 294.7	UNICOM 122.8
------------------------	--	---	-------------------------------	------------------------



SE-4, 22 FEB 2024 to 21 MAR 2024

SE-4, 22 FEB 2024 to 21 MAR 2024



TROY, ALABAMA

AL-5720 (FAA)

22195

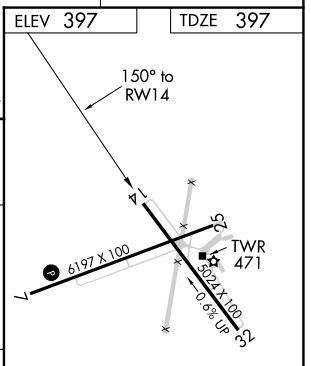
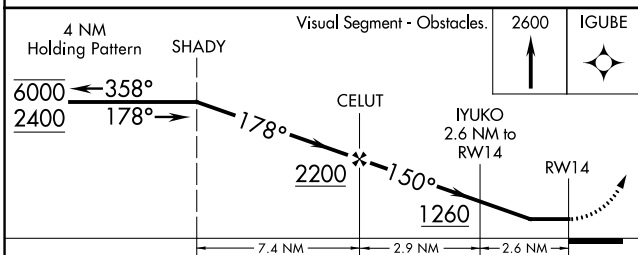
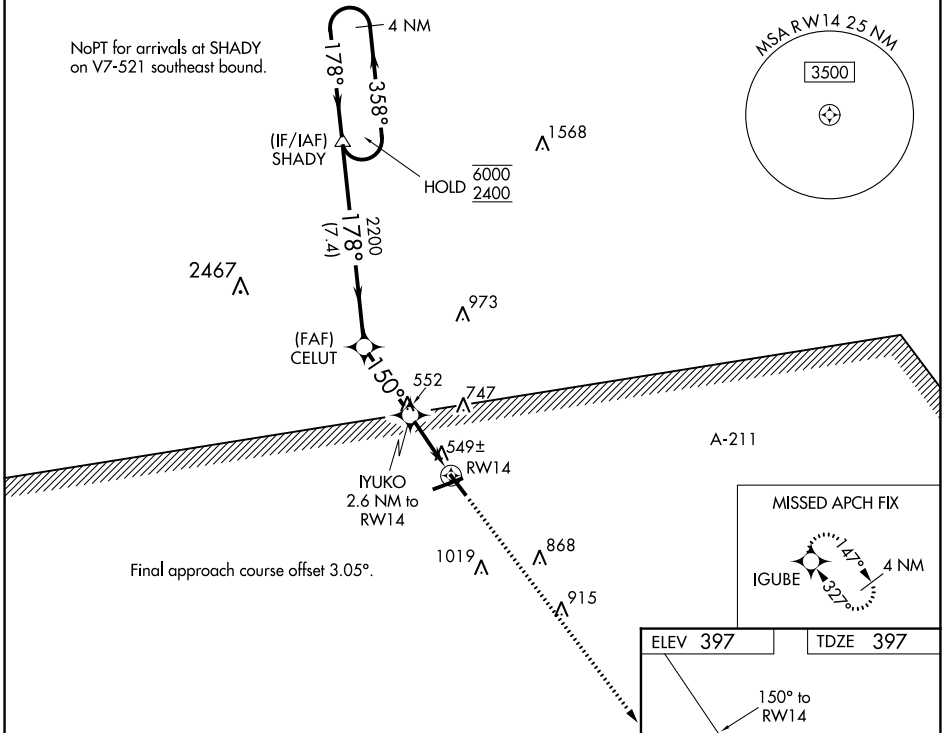
WAAS CH 56237 W14A	APP CRS 150°	Rwy Idg TDZE 397 Apt Elev 397	5024
--	------------------------	---	-------------

RNAV (GPS) RWY 14

TROY MUNI AT N KENNETH CAMPBELL FLD (TOI)

RNP APCH. Rwy 14 helicopter visibility reduction below 1 SM NA. Rwy 14 Straight-in and Circling and Circling Rwy 32 NA at night. ASR/PAR		MISSED APPROACH: Climb to 2600 direct IGUBE and hold.	
---	--	---	--

ATIS 120.925	CAIRNS APP CON * 121.1 319.25	TROY TOWER * 124.3 (CTAF) 0 306.9	GND CON 121.9 294.7	UNICOM 122.8
------------------------	---	---	-------------------------------	------------------------



CATEGORY	A	B	C	D
LP MDA	800-1	403 (500-1)	800-1½	403 (500-1½)
LNAV MDA	900-1	503 (600-1)	900-1¾	503 (600-1¾)
C CIRCLING	1000-1	603 (700-1)	1300-2¾ 903 (1000-2¾)	1380-3 983 (1000-3)

MIRL Rwy 7-25 and 14-32

TROY, ALABAMA
Amdt 1C 21MAY20

TROY MUNI AT N KENNETH CAMPBELL FLD (TOI)
31°52'N-86°01'W
RNAV (GPS) RWY 14

SE-4, 22 FEB 2024 to 21 MAR 2024

SE-4, 22 FEB 2024 to 21 MAR 2024

WAAS CH 50137 W25A	APP CRS 254°	Rwy Idg TDZE Apt Elev	6197 394 397
--	------------------------	-----------------------------	---

RNAV (GPS) RWY 25

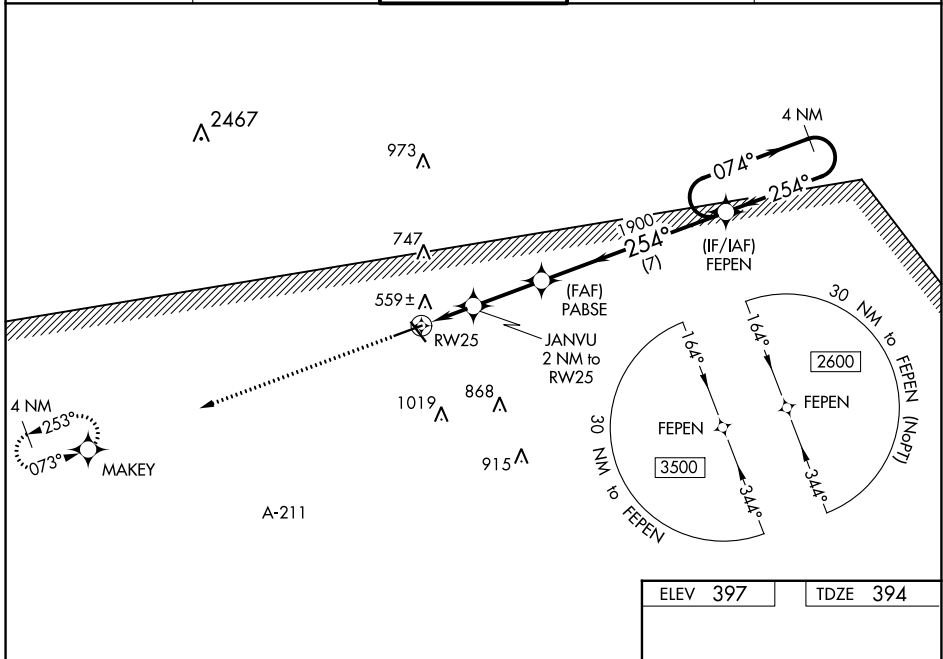
TROY MUNI AT N KENNETH CAMPBELL FLD (TOI)

RNP APCH.

⚠ For uncompensated Baro-VNAV systems, LNAV/VNAV NA below -7°C (20°F) or above 54°C (130°F). Baro-VNAV and VDP NA when using Montgomery Rgnl (Dannelly Fld) altimeter setting. Rwy 25 helicopter visibility reduction below ¼ SM NA. Circling to Rwy 14, 32 NA at night. When local altimeter setting not received, use Montgomery Rgnl (Dannelly Fld) altimeter setting and increase LPV DA to 747 and all visibilities ¼ SM, LNAV/VNAV DA to 840 and visibilities ⅓ SM, and all MDA 100 feet; increase LNAV Cats C and D and Circling Cat C visibility ¼ SM.

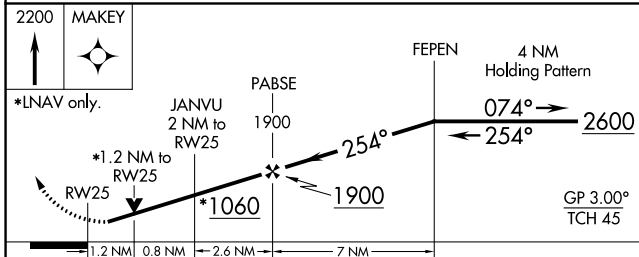
MISSED APPROACH:
Climb to 2200 direct
MAKEY and hold.

ATIS 120.925	CAIRNS APP CON ★ 121.1 319.25	TROY TOWER ★ 124.3 (CTAF) 306.9	GND CON 121.9 294.7	UNICOM 122.8
------------------------	---	---	-------------------------------	------------------------



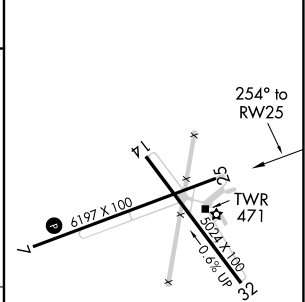
SE-4, 22 FEB 2024 to 21 MAR 2024

SE-4, 22 FEB 2024 to 21 MAR 2024



ELEV 397	TDZE 394
-----------------	-----------------

2200	MAKEY
*LNAV only.	
JANVU 2 NM to RWY 25	PABSE 1900
*1.2 NM to RWY 25	*1060
1.2 NM	0.8 NM
2.6 NM	7 NM
254°	074°
254°	2600
GP 3.00°	TCH 45



CATEGORY	A	B	C	D
LPV DA		647-7/8	253 (300-7/8)	
LNAV/VNAV DA		740-1 1/8	346 (400-1 1/8)	
LNAV MDA	820-1	426 (500-1)	820-1 1/4	426 (500-1 1/4)
CIRCLING	1000-1	603 (700-1)	1300-2 3/4 903 (1000-2 3/4)	1380-3 983 (1000-3)

MIRL Rwy 7-25 and 14-32

TROY, ALABAMA

AL-5720 (FAA)

22363

WAAS CH 53506 W32A	APP CRS 327°	Rwy Idg TDZE 393 Apt Elev 397
--	------------------------	---

RNAV (GPS) RWY 32

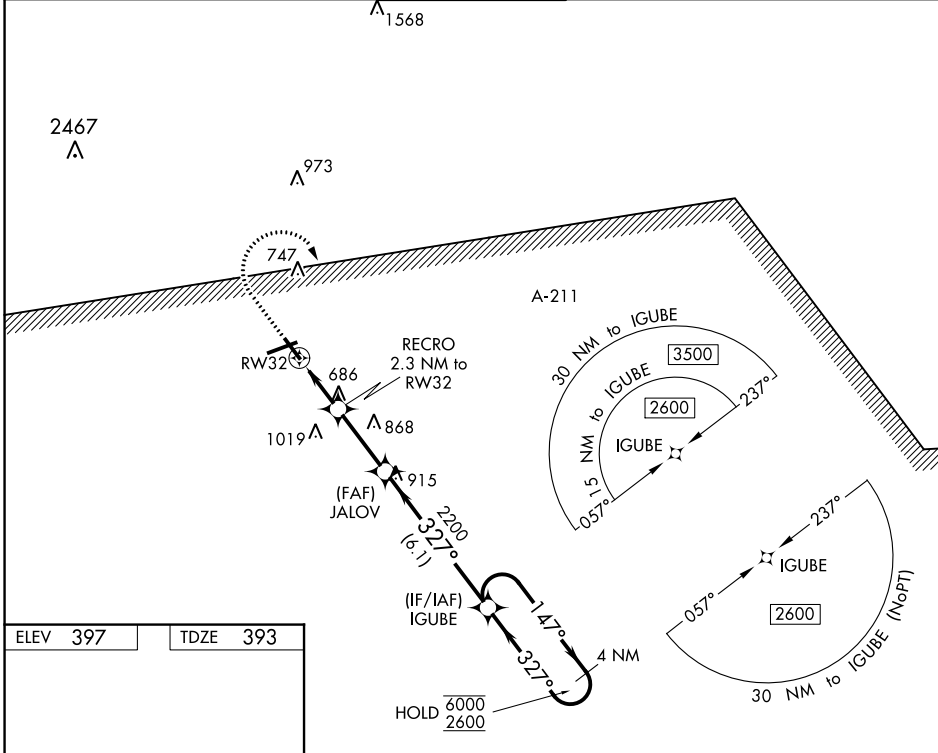
TROY MUNI AT N KENNETH CAMPBELL FLD (TOI)

RNP APCH.

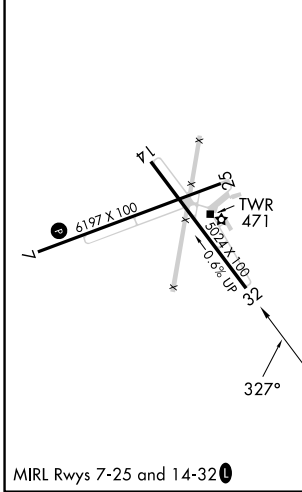
ASR/PAR
 Rwy 32 helicopter visibility reduction below 1 SM NA.
 Rwy 32 Straight-in and Circling and Circling Rwy 14 NA at night.

MISSED APPROACH: Climb to 1200 then climbing right turn to 2600 direct IGUBE and hold.

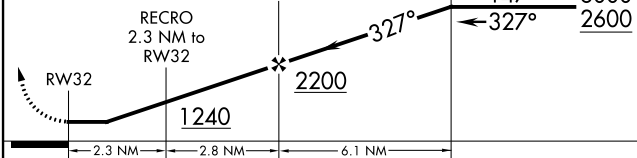
ATIS 120.925	CAIRNS APP CON* 121.1 319.25	TROY TOWER* 124.3 (CTAF) 306.9	GND CON 121.9 294.7	UNICOM 122.8
------------------------	--	--	-------------------------------	------------------------



ELEV 397	TDZE 393
----------	----------



1200	2600	IGUBE	Visual Segment - Obstacles.	IGUBE	4 NM Holding Pattern
------	------	-------	-----------------------------	-------	----------------------



CATEGORY	A	B	C	D
LP MDA	940-1	547 (600-1)	940-1 ⁵ / ₈	547 (600-1 ⁵ / ₈)
LNAV MDA	960-1	567 (600-1)	960-1 ³ / ₄	567 (600-1 ³ / ₄)
C CIRCLING	1000-1	603 (700-1)	1300-2 ³ / ₄ 903 (1000-2 ³ / ₄)	1380-3 983 (1000-3)

TROY, ALABAMA
 Amdt 1D 29DEC22

TROY MUNI AT N KENNETH CAMPBELL FLD (TOI)
 31°52'N-86°01'W
RNAV (GPS) RWY 32

SE-4, 22 FEB 2024 to 21 MAR 2024

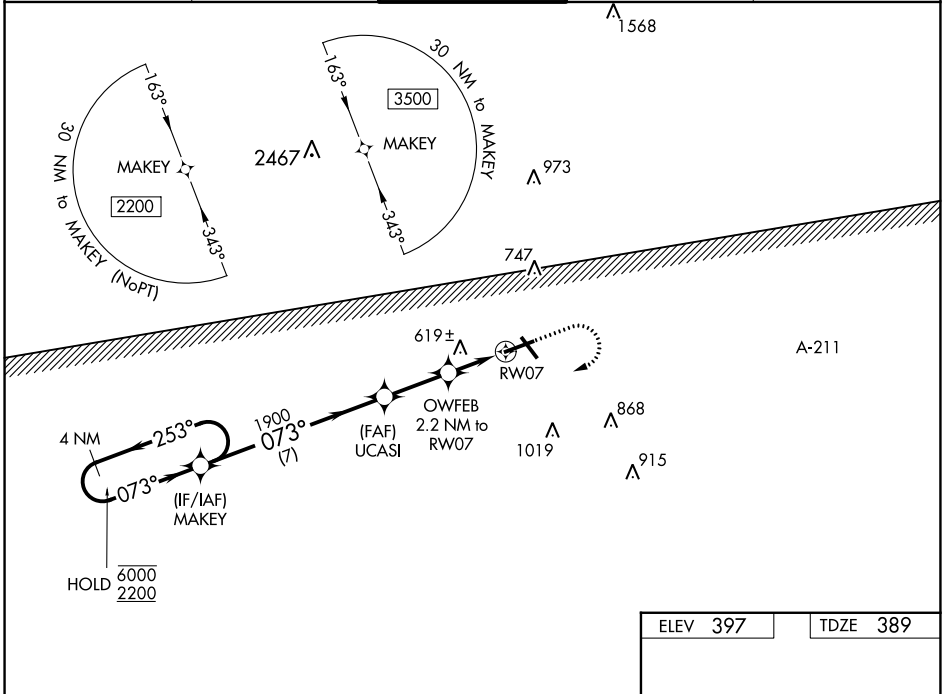
SE-4, 22 FEB 2024 to 21 MAR 2024

WAAS CH 82006 W07A	APP CRS 073°	Rwy Idg TDZE Apt Elev	6197 389 397
--	------------------------	-----------------------------	---

RNAV (GPS) RWY 7

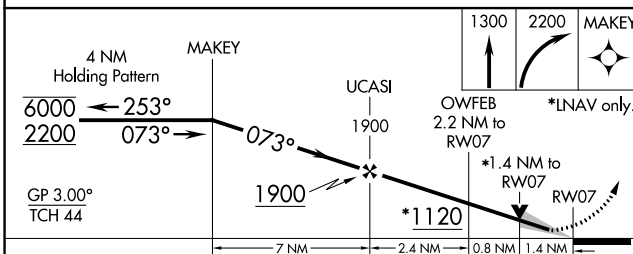
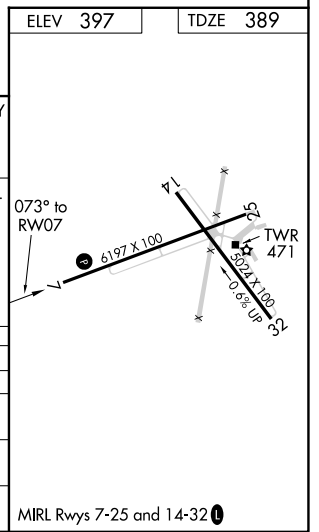
TROY MUNI AT N KENNETH CAMPBELL FLD (TOI)

RNP APCH.		MISSED APPROACH: Climb to 1300 then climbing right turn to 2200 direct MAKEY and hold.		
<p>⚠ Circling Rwy 14, 32 NA at night. For uncompensated Baro-VNAV systems, LNAV/VNAV NA below -7°C or above 54°C.</p> <p>ASR/PAR</p>				
ATIS 120.925	CAIRNS APP CON★ 121.1 319.25	TROY TOWER★ 124.3 (CTAF) 0 306.9	GND CON 121.9 294.7	UNICOM 122.8



SE-4, 22 FEB 2024 to 21 MAR 2024

SE-4, 22 FEB 2024 to 21 MAR 2024



CATEGORY	A	B	C	D
LPV DA		637-7/8	248 (300-7/8)	
LNAV/VNAV DA		702-1 1/8	313 (400-1 1/8)	
LNAV MDA	880-1	491 (500-1)	880-1 3/8	491 (500-1 3/8)
C CIRCLING	1000-1	603 (700-1)	1300-2 3/4 903 (1000-2 3/4)	1380-3 983 (1000-3)

MIRL Rwy 7-25 and 14-32 **⚠**

RNAV (GPS) RWY 7