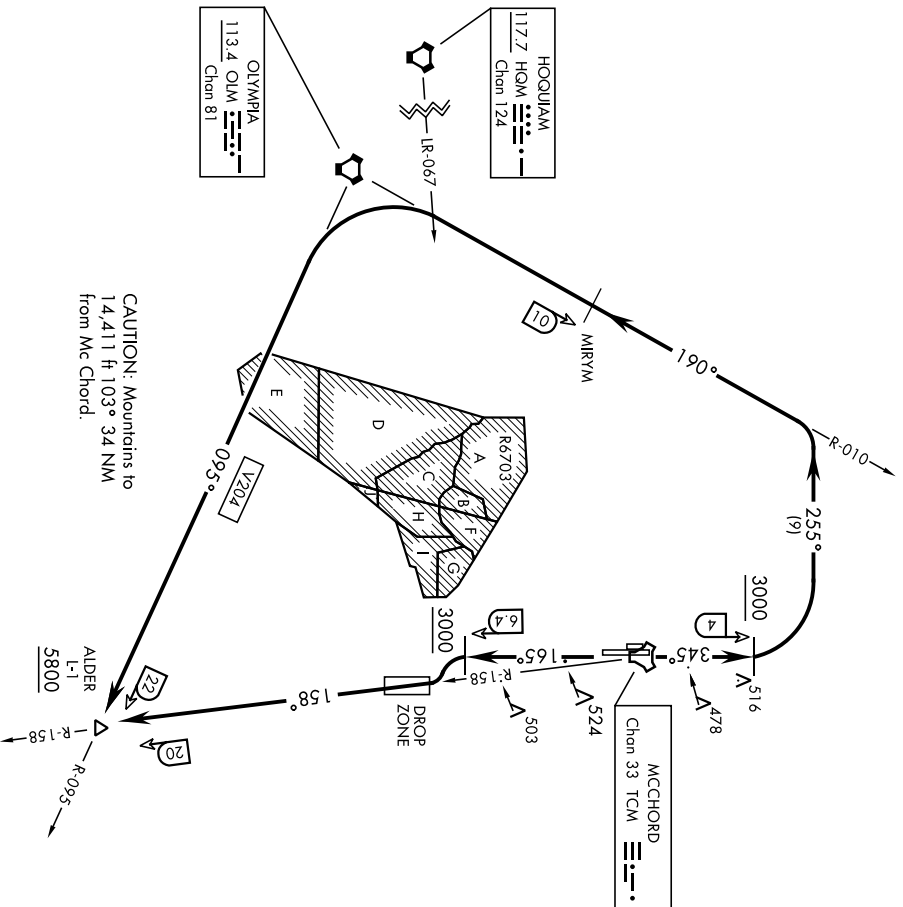


ATIS  
 135.825 270.1  
 GND CON  
 118.175 279.65  
 TOWER  
 124.8 259.3  
 SEATTLE DEP CON  
 126.5 377.15

AL-114 (USAF)

If unable to make ATC charted crossing  
 restrictions advise ATC prior to departure.



**DEPARTURE ROUTE DESCRIPTION**

**TAKEOFF RWY 16:** Climb on track 165° to cross TCM TACAN 6.4 DME, at or above 3000. Then turn left to intercept TCM R-158 to cross ALDER at or above 5800.

**TAKEOFF RWY 34:** Climb on track 345° to cross TCM TACAN 4 DME at or above 3000. Then turn left heading 255° to intercept OLM VORTAC R-010 MIRYM then OLM. Then via V204 to cross ALDER at or above 5800.

**ALDER-TWO DEPARTURE (ALDER2 • ALDER)**

TACOMA, WASHINGTON  
 MCCHORD FLD (KTCM)

MOCAA THREE DEPARTURE (RNAV)  
 (MOCAA3.MOCAA) 150CT15  
 TACOMA, WASHINGTON  
 MCCHORD FLD (JOINT BASE LEWIS-MCCHORD) (KTTCM)

D-ATIS  
 135.825 270.1  
 SEATTLE DEP CON  
 126.5 377.15  
 MCCHORD TOWER  
 124.8 259.3  
 GND CON  
 118.175 279.65

**TOP ALTITUDE:**  
**9000**

**DEPARTURE ROUTE DESCRIPTION**

**TAKEOFF RUNWAY 16:** Climb heading 165° to 3000, then left turn direct to cross ALDER at or above 5800 and at or below 9000, then on track 111° to MOCAA, thence . . . .

**TAKEOFF RUNWAY 34:** Climb heading 345° to 3000, then left turn direct NEECE, then on track 188° to cross NISQA at 4000, then on track 129° to cross KUSCE at or above 4000 and at or below 250K, then on track 086° to cross ALDER at or above 5800 and at or below 9000, then on track 111° to MOCAA, thence . . . .

. . . . (transition). Maintain 9000, expect filed altitude five minutes after departure.

BAKER CITY TRANSITION (MOCAA3.BKE)

JINMO TRANSITION (MOCAA3.JINMO)

KIMBERLY TRANSITION (MOCAA3.IMB)

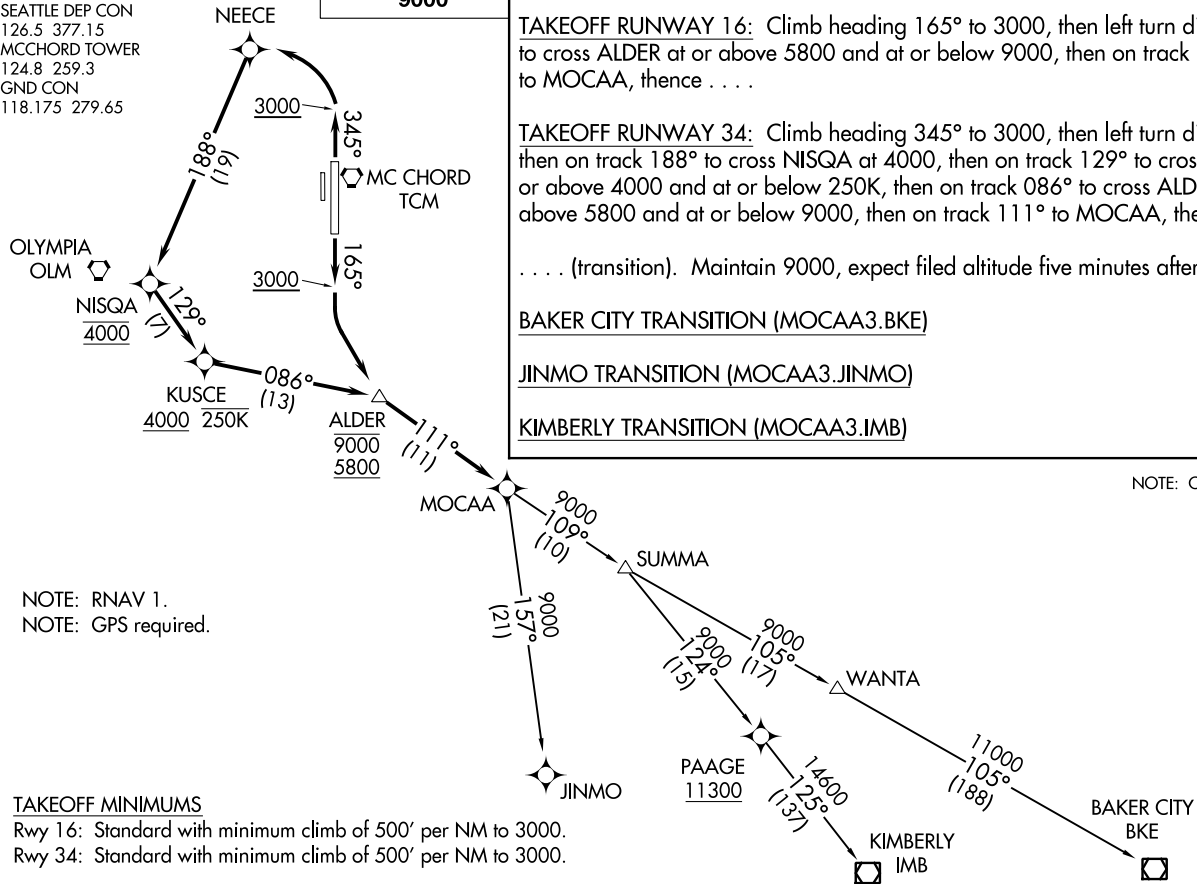
NOTE: Chart not to scale.

NOTE: RNAV 1.  
 NOTE: GPS required.

**TAKEOFF MINIMUMS**

Rwy 16: Standard with minimum climb of 500' per NM to 3000.

Rwy 34: Standard with minimum climb of 500' per NM to 3000.



(MOCAA3.MOCAA) 21112  
 MOCAA THREE DEPARTURE (RNAV)  
 MCCHORD FLD (JOINT BASE LEWIS-MCCHORD) (KTTCM)  
 TACOMA, WASHINGTON  
 AL-14 (FAA)

21224

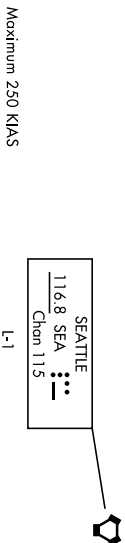
# OLYMPIC-FOUR DEPARTURE

AL-414 [USAF]

MCCHORD FLD (KTCM)  
TACOMA, WASHINGTON

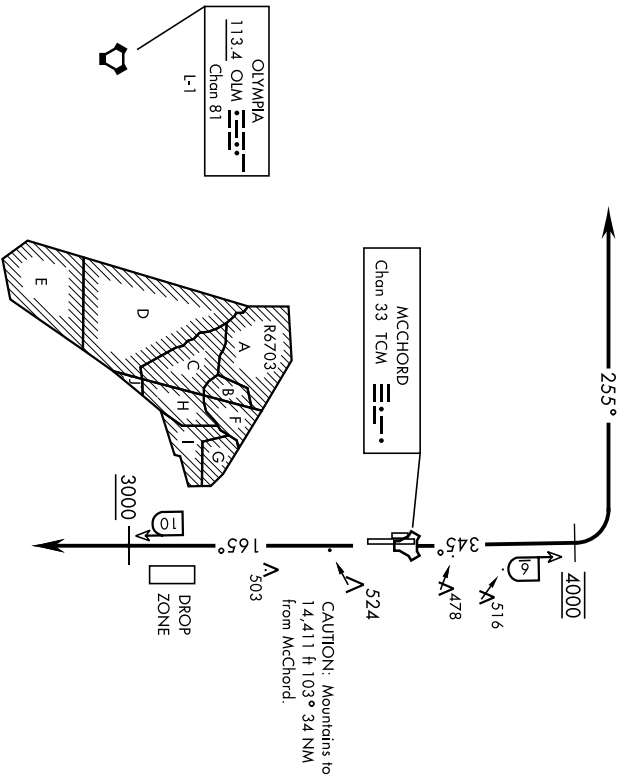
ATIS  
135.825 270.1  
GND CON  
118.175 279.65  
TOWER  
124.8 259.3  
SEATTLE DEP CON  
126.5 377.15

If unable to make ATC charted crossing  
restrictions advise ATC prior to departure.



Maximum 250 KIAS

L-1



CAUTION: Mountains to  
14,411 ft 103° 34 NM  
from McChord.

MCCHORD  
Chan 33 TCM

OLYMPIA  
113.4 OLM  
Chan 81

## RADAR REQUIRED

### DEPARTURE ROUTE DESCRIPTION

**TAKEOFF RWY 16:** Climb on track of 165° to cross TCM TACAN 10 DME or or above

**3000.** Expect radar vectors within TCM 8 DME. Maintain ATC assigned altitude.

**TAKEOFF RWY 34:** Climb on track 345° to cross TCM TACAN 6 DME at 4000.

Then turn left tracking 255° to expect radar vectors. Maintain ATC assigned altitude.

## OLYMPIC-FOUR DEPARTURE

TACOMA, WASHINGTON  
MCCHORD FLD (KTCM)

21224

# PUGET-SIX DEPARTURE

AL-414 [USAF]

MCHORD FLD (KTCM)  
TACOMA, WASHINGTON

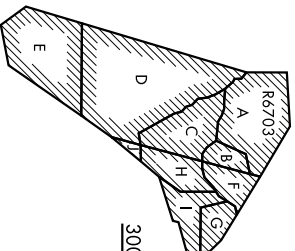
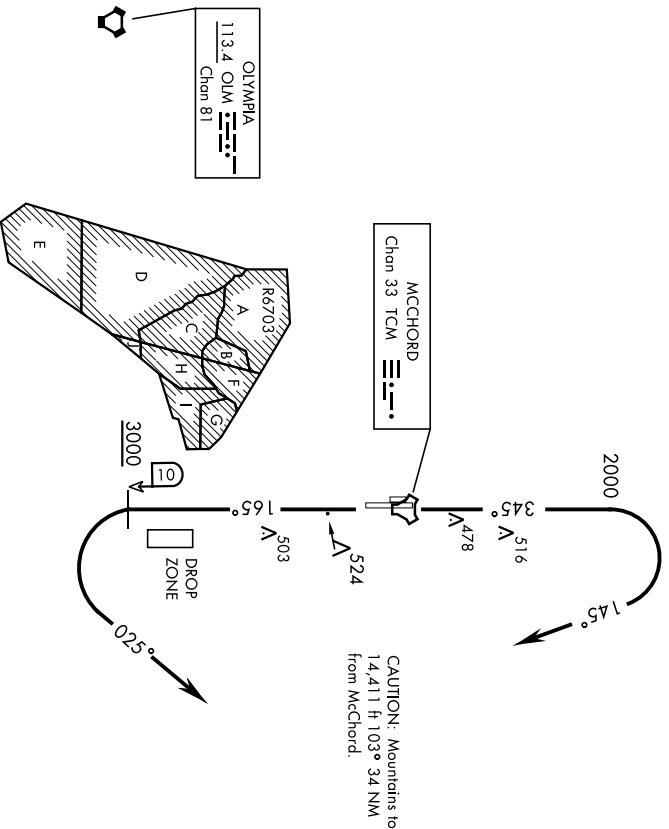
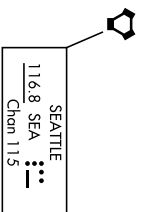
ATIS  
135.825 270.1  
GND CON  
118.173 279.65  
TOWER  
124.8 259.3  
SEATTLE DEP CON  
126.5 377.15

If unable to make ATC charted crossing  
restriction advise ATC prior to departure.

## RADAR REQUIRED

Maximum 250 KIAS

Radar vectors required within 10 NM after departure.



### DEPARTURE ROUTE DESCRIPTION

**TAKEOFF RWY 16:** Climb on track 165° to cross TCM TACAN 10 DME at or above 3000.

Then turn left tracking 025° to expect radar vectors. Maintain ATC assigned altitude.

**TAKEOFF RWY 34:** Climb on track 345° to 2000, then turn right tracking 145° to expect radar vectors. Maintain ATC assigned altitude.

# PUGET-SIX DEPARTURE

TACOMA, WASHINGTON  
MCHORD FLD (KTCM)