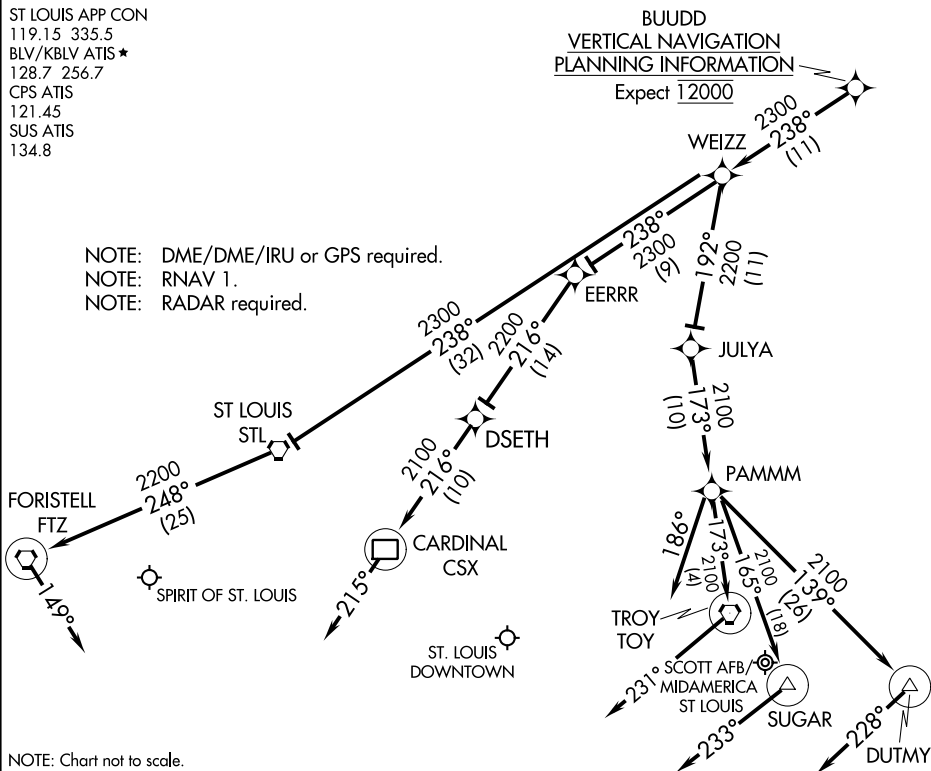


ST LOUIS APP CON
119.15 335.5
BLV/KBLV ATIS ★
128.7 256.7
CPS ATIS
121.45
SUS ATIS
134.8

BUDD
VERTICAL NAVIGATION
PLANNING INFORMATION
Expect 12000

NOTE: DME/DME/IRU or GPS required.
NOTE: RNAV 1.
NOTE: RADAR required.



NOTE: Chart not to scale.

ARRIVAL ROUTE DESCRIPTION

SPIRIT OF ST. LOUIS:

LANDING RUNWAYS 8L/R: From BUDD on track 238° to WEIZZ, then on track 238° to STL VORTAC, then on track 248° to FTZ VORTAC. Expect RADAR vectors prior to FTZ VORTAC, if no heading received, track 149°.

LANDING RUNWAYS 26L/R: From BUDD on track 238° to WEIZZ, then on track 238° to EERRR, then on track 216° to DSETH, then on track 216° to CSX DME. Expect RADAR vectors prior to CSX DME, if no heading received, track 215°.

ST. LOUIS DOWNTOWN:

LANDING RUNWAY 12R: From BUDD on track 238° to WEIZZ, then on track 192° to JULYA, then on track 173° to PAMMM. Expect RADAR vectors prior to PAMMM, if no heading received, track 186°.

LANDING RUNWAYS 30L/R: From BUDD on track 238° to WEIZZ, then on track 192° to JULYA, then on track 173° to PAMMM, then on track 165° to SUGAR. Expect RADAR vectors prior to SUGAR, if no heading received, track 233°.

SCOTT AFB/MIDAMERICA ST LOUIS:

LANDING RUNWAYS 14L/R: From BUDD on track 238° to WEIZZ, then on track 192° to JULYA, then on track 173° to PAMMM, then on track 173° to TOY VORTAC. Expect RADAR vectors prior to TOY VORTAC, if no heading received, track 231°.

LANDING RUNWAYS 32L/R: From BUDD on track 238° to WEIZZ, then on track 192° to JULYA, then on track 173° to PAMMM, then on track 139° to DUTMY. Expect RADAR vectors prior to DUTMY, if no heading received, track 228°.

DELMA FOUR ARRIVAL (RNAV)

AL-46 (FAA)

BELLEVILLE, ILLINOIS

ST LOUIS APP CON

128.1 307.05

ALN ATIS

128.0

BLV/KBLV ATIS *

128.7 256.7

CPS ATIS

121.45

SUS ATIS

134.8

ST. LOUIS RGNL

CARDINAL CSX

039°

349°

EMKAA

080°

FOSKU

ST. LOUIS DOWNTOWN

SCOTT AFB/
MIDAMERICA ST LOUIS

SPIRIT OF ST. LOUIS

DERDF

3000

347°

(151)

3000

039°

(34)

(27)

3000

051°

(26)

3000

084°

(29)

084°

085°

3000

(10)

MMRSN

3000

026°

(11)

DELMA

VERTICAL NAVIGATION
PLANNING INFORMATION

Expect 13000

NOTE: DME/DME/IRU or GPS required.

NOTE: RNAV 1.

NOTE: RADAR required.

NOTE: Chart not to scale.

ARRIVAL ROUTE DESCRIPTION

SPIRIT OF ST. LOUIS:

LANDING RUNWAYS 8L/R: From DELMA on track 026° to MMRSN, then on track 347° to DERDF. Expect RADAR vectors to final approach. If no heading received, track 349°.

LANDING RUNWAYS 26L/R: From DELMA on track 026° to MMRSN, then on track 051° to EMKAA. Expect RADAR vectors to final approach. If no heading received, track 349°.

ST. LOUIS DOWNTOWN:

LANDING RUNWAY 12R: From DELMA on track 026° to MMRSN, then on track 051° to FOSKU. Expect RADAR vectors to final approach. If no heading received, track 080°.

LANDING RUNWAYS 30L/R: From DELMA on track 026° to MMRSN, then on track 084° to ESSAR, then on track 085° to HOLLT. Expect RADAR vectors to final approach. If no heading received, track 033°.

SCOTT AFB/MIDAMERICA ST LOUIS:

LANDING RUNWAYS 14L/R, 32L/R: From DELMA on track 026° to MMRSN, then on track 084° to ESSAR. Expect RADAR vectors to final approach. If no heading received, track 084°.

ST. LOUIS RGNL:

LANDING RUNWAYS 11, 17, 29, 35: From DELMA on track 026° to MMRSN, then on track 039° to CSX DME. Expect RADAR vectors to final approach course. If no heading received, track 039°.

DELMA FOUR ARRIVAL (RNAV)

BELLEVILLE, ILLINOIS

EC-3, 22 FEB 2024 to 21 MAR 2024

EC-3, 22 FEB 2024 to 21 MAR 2024

(DIRT.DIRTT2) 17061

DIRTT TWO ARRIVAL (RNAV)

AL-5400 (FAA)

SPIRIT OF ST LOUIS (SUS)

ST. LOUIS, MISSOURI

DIRTT VERTICAL NAVIGATION PLANNING INFORMATION

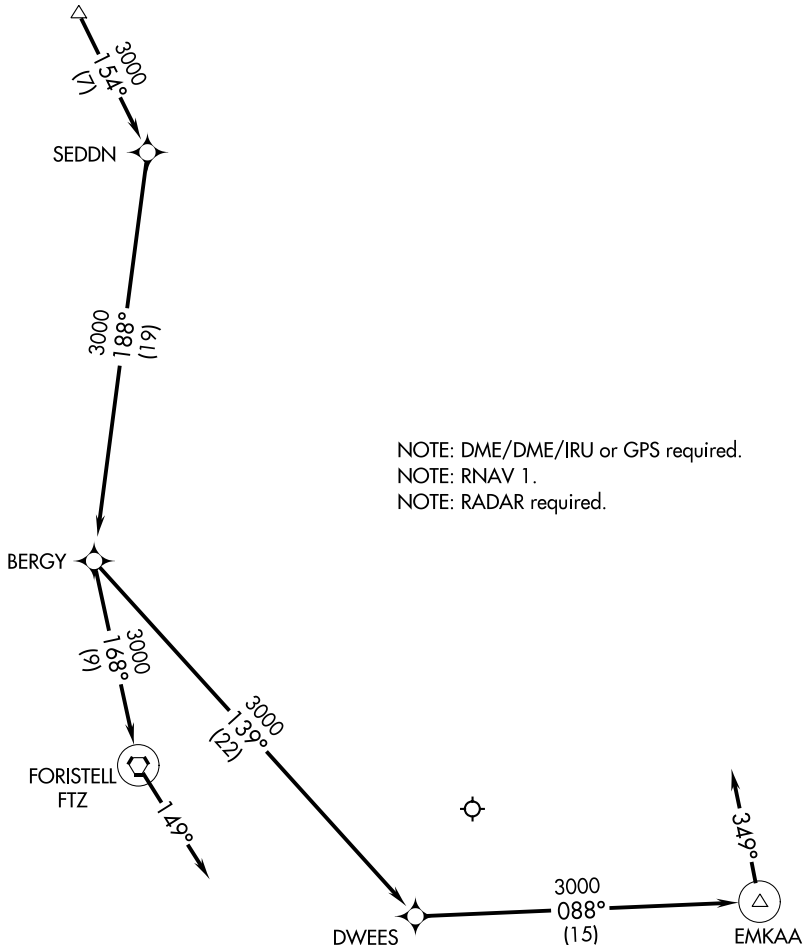
ST. LOUIS APP CON

119.15 335.5

ATIS

134.8

Expect 13000



ARRIVAL ROUTE DESCRIPTION

From DIRTT on track 154° to SEDDN, then on track 188° to BERGY.

LANDING RUNWAYS 8L/R: From BERGY on track 168° to FTZ VORTAC, then on track 149°. Expect RADAR vectors to final approach prior to FTZ VORTAC.

LANDING RUNWAYS 26L/R: From BERGY on track 139° to DWEES, then on track 088° to EMKAA, then on track 349°. Expect RADAR vectors to final approach prior to EMKAA.

DIRTT TWO ARRIVAL (RNAV)

(DIRT.DIRTT2) 02MAR17

ST. LOUIS, MISSOURI
SPIRIT OF ST LOUIS (SUS)

NC-3, 22 FEB 2024 to 21 MAR 2024

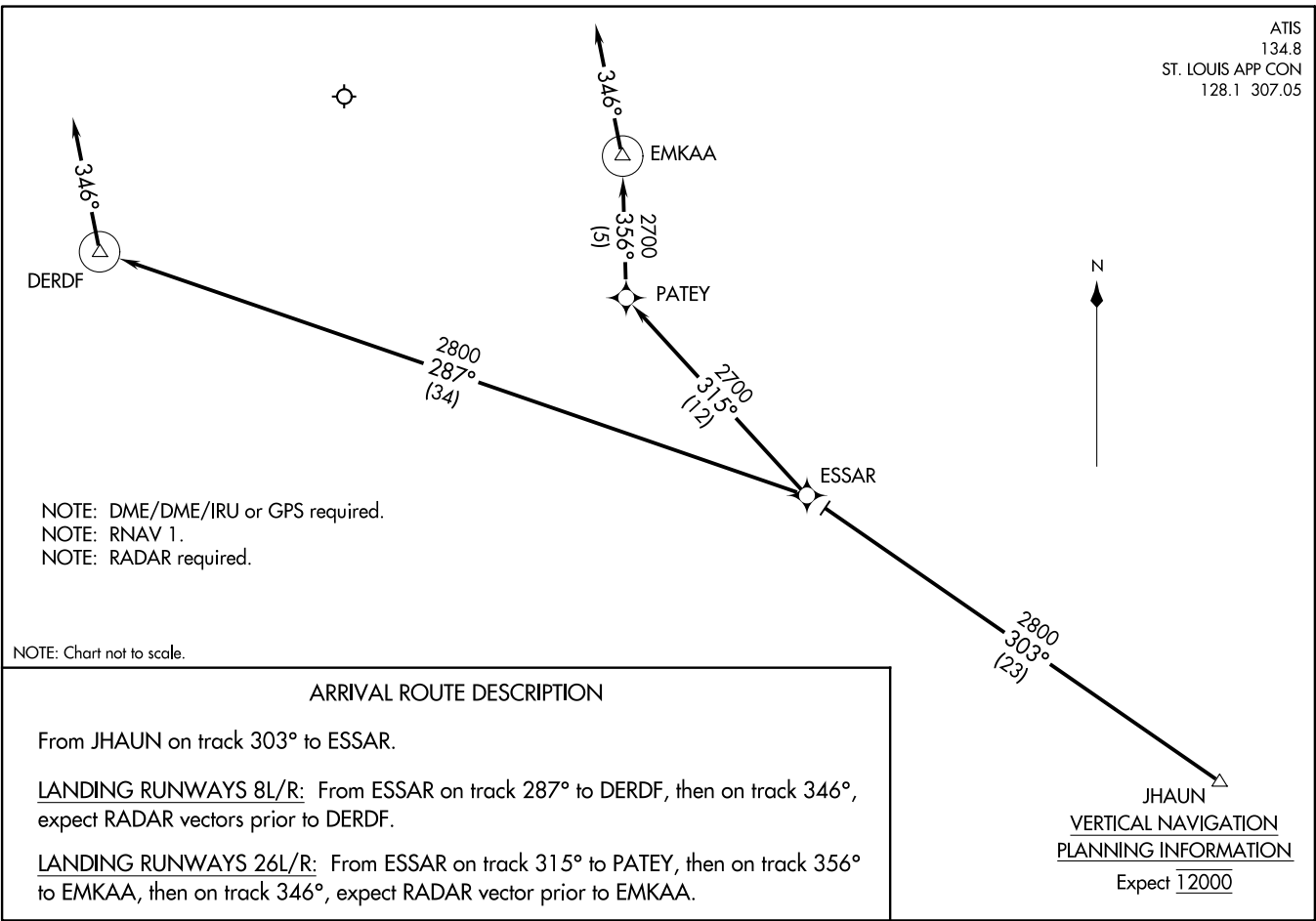
NC-3, 22 FEB 2024 to 21 MAR 2024

ATIS
134.8
ST. LOUIS APP CON
128.1 307.05

(JHAUN.JHAUN1) 16259
JHAUN ONE ARRIVAL (RNAV)

AL-5400 (FAA)

SPRIT OF ST LOUIS (STS)
ST. LOUIS, MISSOURI



NOTE: DME/DME/IRU or GPS required.
NOTE: RNAV 1.
NOTE: RADAR required.

NOTE: Chart not to scale.

ARRIVAL ROUTE DESCRIPTION

From JHAUN on track 303° to ESSAR.

LANDING RUNWAYS 8L/R: From ESSAR on track 287° to DERDF, then on track 346°, expect RADAR vectors prior to DERDF.

LANDING RUNWAYS 26L/R: From ESSAR on track 315° to PATEY, then on track 356° to EMKAA, then on track 346°, expect RADAR vector prior to EMKAA.

JHAUN
VERTICAL NAVIGATION
PLANNING INFORMATION
Expect 12000

JHAUN ONE ARRIVAL (RNAV)
(JHAUN.JHAUN1) 15NOV12

ST. LOUIS, MISSOURI
SPRIT OF ST LOUIS (STS)

(SLVER.SLVER1) 16259

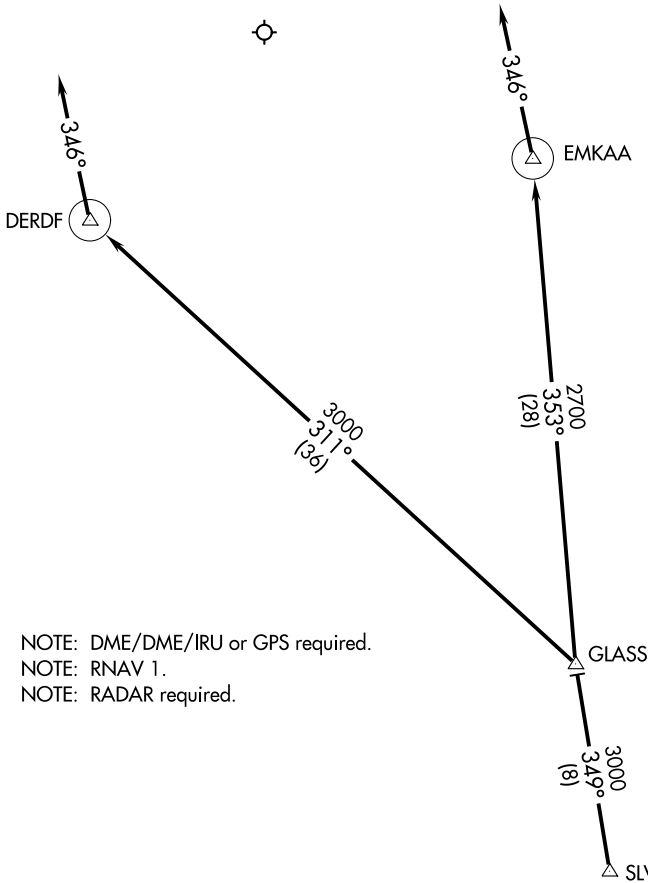
SLVER ONE ARRIVAL (RNAV)

AL-5400 (FAA)

SPIRIT OF ST LOUIS (SUS)

ST. LOUIS, MISSOURI

ATIS
134.8
ST LOUIS APP CON
128.1 307.05



NOTE: DME/DME/IRU or GPS required.
NOTE: RNAV 1.
NOTE: RADAR required.

VERTICAL NAVIGATION
PLANNING INFORMATION
Expect 12000

NOTE: Chart not to scale.

ARRIVAL ROUTE DESCRIPTION

From SLVER on track 349° to GLASS.

LANDING RUNWAYS 8L/R: From GLASS on track 311° to DERDF, then on track 346°, expect RADAR vectors prior to DERDF.

LANDING RUNWAYS 26L/R: From GLASS on track 353° to EMKAA, then on track 346°, expect RADAR prior to EMKAA.

SLVER ONE ARRIVAL (RNAV)

(SLVER.SLVER1) 15NOV12

ST. LOUIS, MISSOURI
SPIRIT OF ST LOUIS (SUS)

NC-3, 22 FEB 2024 to 21 MAR 2024

NC-3, 22 FEB 2024 to 21 MAR 2024