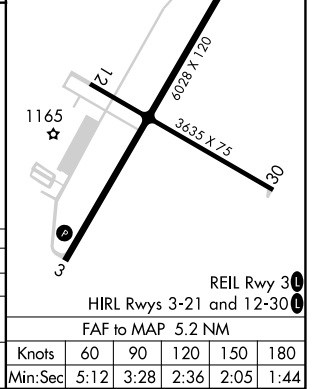
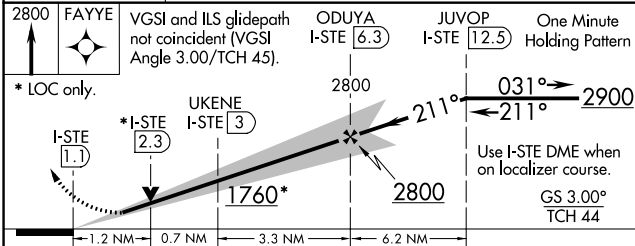
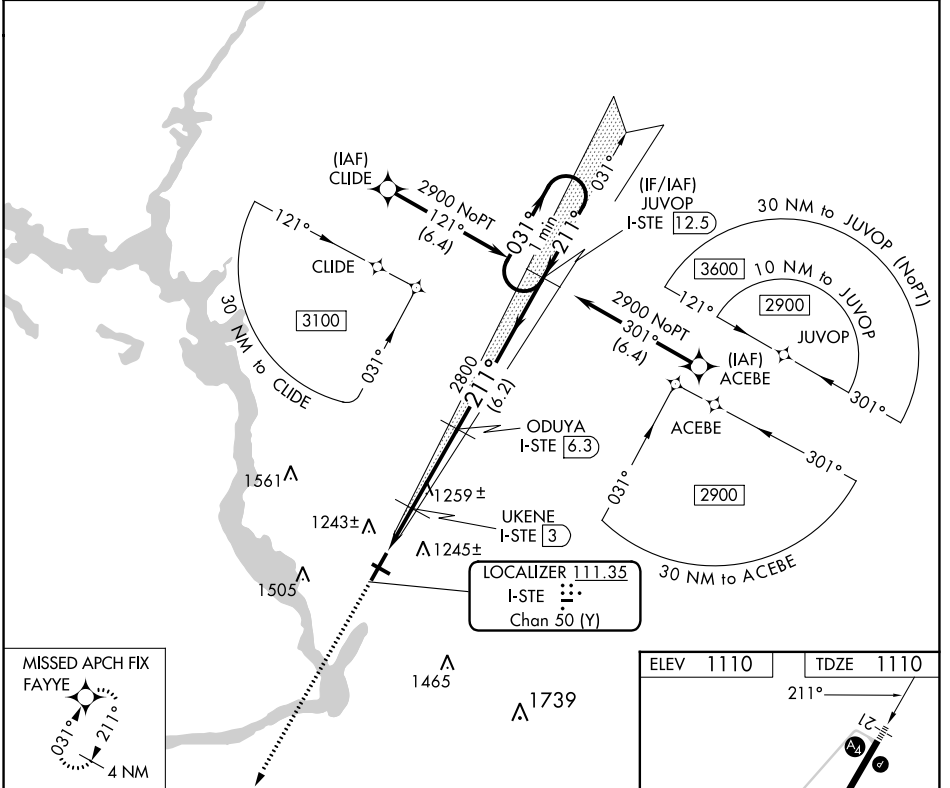


LOC/DME I-STE	APP CRS	Rwy Ldg	<b>6028</b>
<b>111.35</b>	<b>211°</b>	TDZE	<b>1110</b>
Chan <b>50(Y)</b>		Apt Elev	<b>1110</b>

**ILS or LOC RWY 21**  
STEVENS POINT MUNI (STE)

RNP APCH - GPS.	MALS	MISSED APPROACH: Climb to 2800 direct FAYYE and hold.
▼ DME required. For inop ALS, increase S-LOC 21 Cat C/D visibility to 1 1/8 SM. Inop table does not apply to S-ILS 21 all Cats.	⊖	
▲ NA	⊕	
AWOS-3 <b>119.275</b>	MINNEAPOLIS CENTER <b>124.4 317.7</b>	UNICOM <b>122.7 (CTAF) 0</b>



CATEGORY	A	B	C	D
S-ILS 21	1360-3/4 250 (300-3/4)			
S-LOC 21	1520-3/4 410 (500-3/4)		1520-1 410 (500-1)	
CIRCLING	1580-1 470 (500-1)	1600-1 490 (500-1)	1860-2 1/4 750 (800-2 1/4)	1860-2 1/2 750 (800-2 1/2)

Knots	60	90	120	150	180
Min:Sec	5:12	3:28	2:36	2:05	1:44

EC-3, 22 FEB 2024 to 21 MAR 2024

EC-3, 22 FEB 2024 to 21 MAR 2024

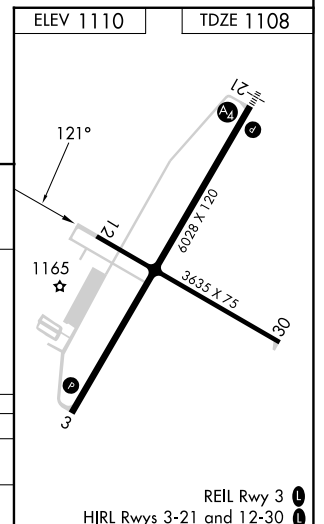
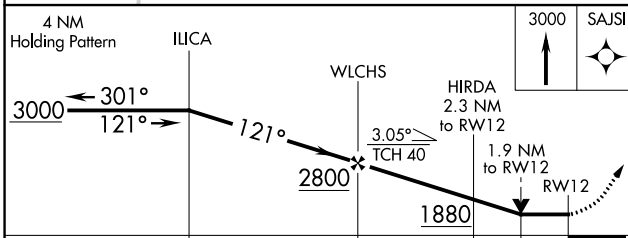
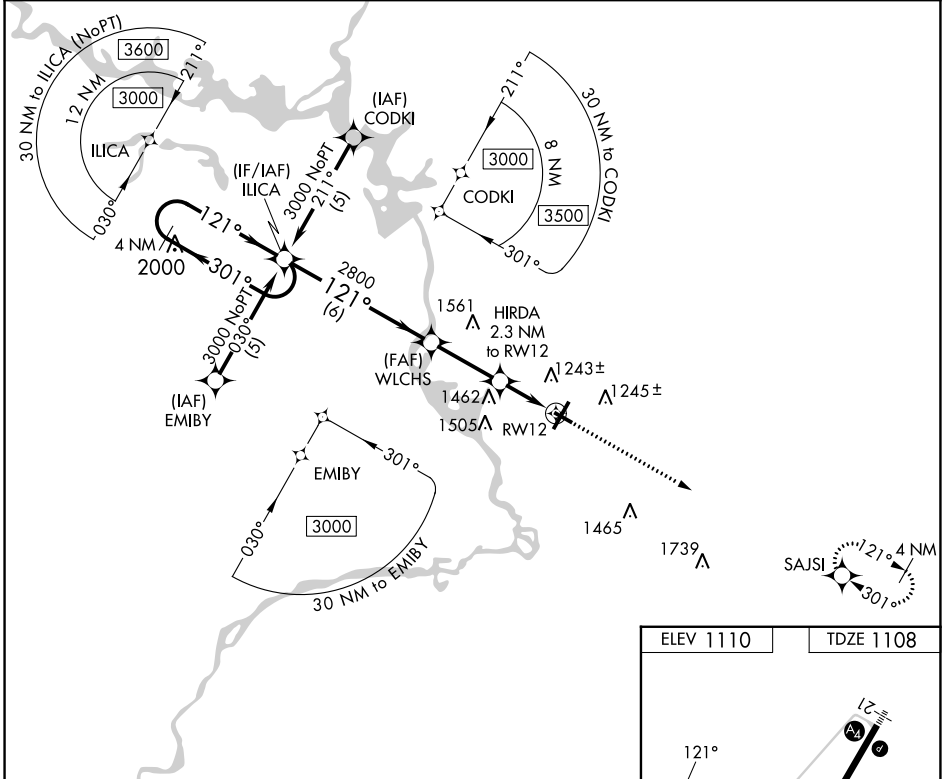
APP CRS	Rwy Idg	<b>3635</b>
<b>121°</b>	TDZE	<b>1108</b>
	Apt Elev	<b>1110</b>

# RNAV (GPS) RWY 12

STEVENS POINT MUNI (STE)

RNP APCH - GPS.		MISSED APPROACH: Climb to 3000 direct SAJSI and hold.
<p><b>▼</b> Rwy 12 helicopter visibility reduction below 3/4 SM NA. When local altimeter not received, use Mosinee altimeter setting and increase all MDA 60 feet, increase LNAV Cat C and D visibility 1/8 SM. VDP NA when using Mosinee altimeter setting.</p>		

AWOS-3 <b>119.275</b>	MINNEAPOLIS CENTER <b>124.4 317.7</b>	UNICOM <b>122.7 (CTAF) 0</b>
--------------------------	--	---------------------------------



CATEGORY	A	B	C	D
LNAV MDA	1760-1	652 (700-1)	1760-1 7/8	652 (700-1 7/8)
<b>C</b> CIRCLING	1760-1	650 (700-1)	1860-2 1/4 750 (800-2 1/4)	1860-2 1/2 750 (800-2 1/2)

EC-3, 22 FEB 2024 to 21 MAR 2024

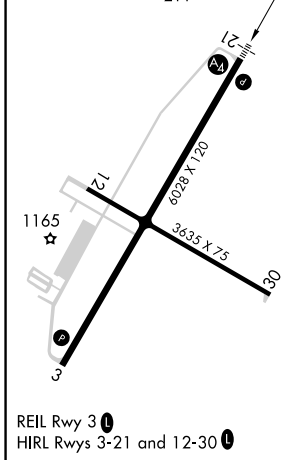
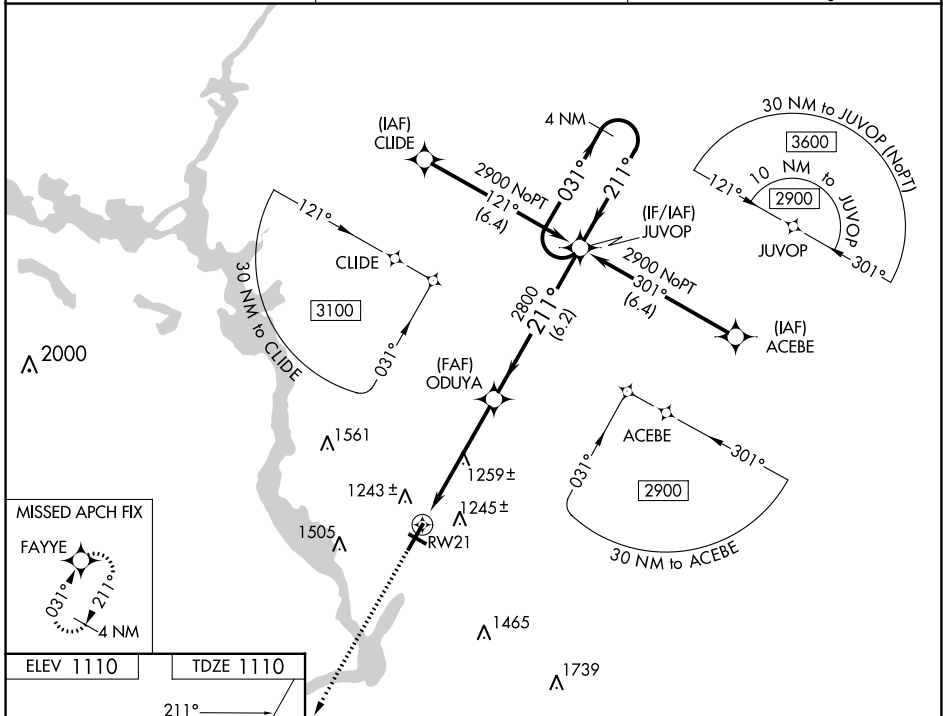
EC-3, 22 FEB 2024 to 21 MAR 2024

WAAS CH <b>86511</b> <b>W21A</b>	APP CRS <b>211°</b>	Rwy Idg TDZE Apt Elev	<b>6028</b> <b>1110</b> <b>1110</b>
--	------------------------	-----------------------------	---

# RNAV (GPS) RWY 21

STEVENS POINT MUNI (STE)

RNP APCH - GPS.		MALS	MISSED APPROACH: Climb to 2800 direct FAYYE and hold.
<p><b>▽</b> For uncompensated Baro-VNAV systems, LNAV/VNAV NA below -17°C or above 54°C. Inop table does not apply to LPV all Cats. For inop ALS, increase LNAV Cat C and D visibility to 1/2 SM.</p>		<b>Ⓜ</b>	
AWOS-3 <b>119.275</b>	MINNEAPOLIS CENTER <b>124.4 317.7</b>	UNICOM <b>122.7 (CTAF)</b>	



ELEV 1110	TDZE 1110	2800	FAYYE	VGSI and RNAV glidepath not coincident (VGSI Angle 3.00/TCH 45).	4 NM Holding Pattern
		*LNAV only		ODUYA 2800	JUVOP 2900
		RW21		2800	2900
		-1.2 NM		4 NM	6.2 NM
				GP 3.00° TCH 44	

CATEGORY	A	B	C	D
LPV DA		1360-3/4	250 (300-3/4)	
LNAV/VNAV DA		1457-3/4	347 (400-3/4)	
LNAV MDA	1520-3/4	410 (500-3/4)	1520-1	410 (500-1)
<b>C</b> CIRCLING	1580-1 470 (500-1)	1600-1 490 (500-1)	1860-2 1/4 750 (800-2 1/4)	1860-2 1/2 750 (800-2 1/2)

EC-3, 22 FEB 2024 to 21 MAR 2024

EC-3, 22 FEB 2024 to 21 MAR 2024

WAAS CH <b>77910</b> <b>W03A</b>	APP CRS <b>031°</b>	Rwy Idg TDZE Apt Elev	<b>6028</b> <b>1108</b> <b>1110</b>
--	------------------------	-----------------------------	---

# RNAV (GPS) RWY 3

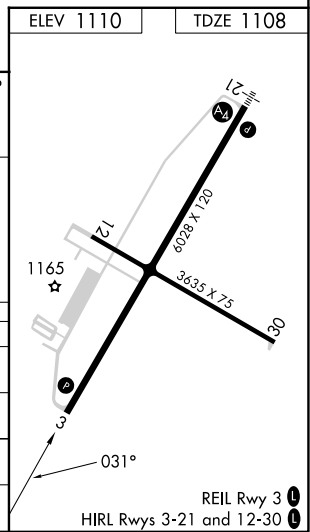
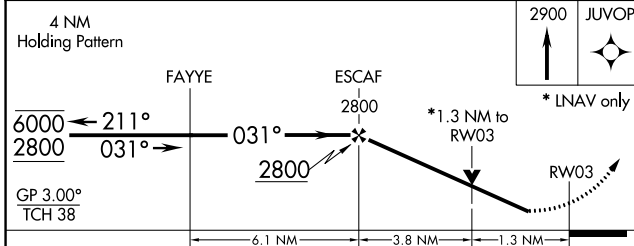
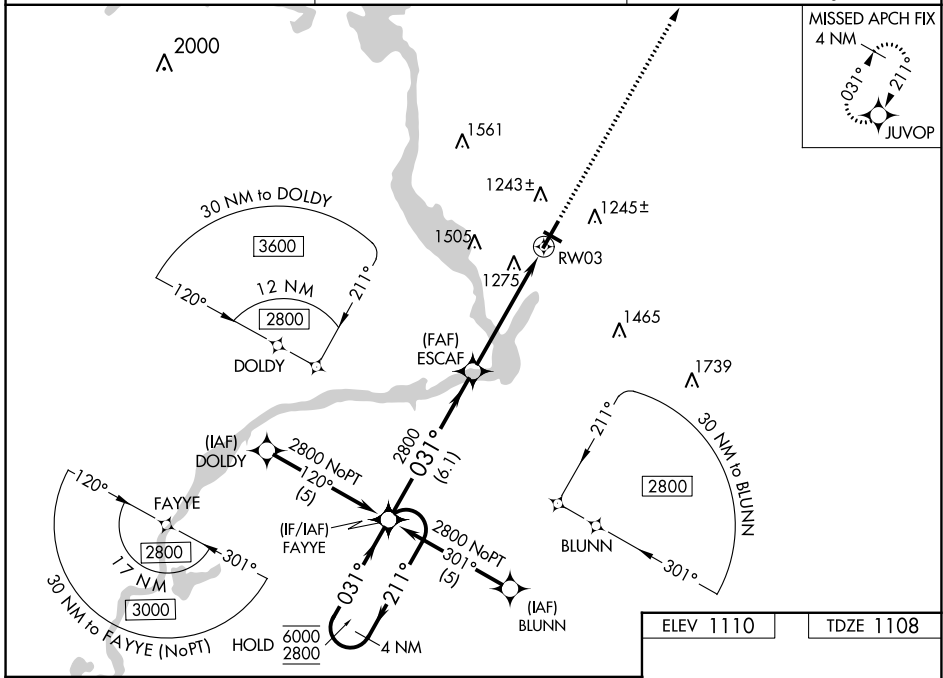
STEVENS POINT MUNI (STE)

RNP APCH - GPS.

▼ Rwy 3 helicopter visibility reduction below 3/4 SM NA.  
 ▲ For uncompensated Baro-VNAV systems, LNAV/VNAV NA below -17° C or above 54°C.

MISSED APPROACH:  
 Climb to 2900 direct JUVOP and hold.

AWOS-3 <b>119.275</b>	MINNEAPOLIS CENTER <b>124.4 317.7</b>	UNICOM <b>122.7 (CTAF) 0</b>
--------------------------	--	---------------------------------



CATEGORY	A	B	C	D
LPV DA		1409-7/8	301 (300-7/8)	
LNAV/VNAV DA		1594-13/8	486 (500-13/8)	
LNAV MDA	1540-1	432 (500-1)	1540-1 1/4	432 (500-1 1/4)
CIRCLING	1580-1 470 (500-1)	1600-1 490 (500-1)	1860-2 1/4 750 (800-2 1/4)	1860-2 1/2 750 (800-2 1/2)

EC-3, 22 FEB 2024 to 21 MAR 2024

EC-3, 22 FEB 2024 to 21 MAR 2024

APP CRS	Rwy Idg	<b>3635</b>
<b>301°</b>	TDZE	<b>1108</b>
	Apt Elev	<b>1110</b>

# RNAV (GPS) RWY 30

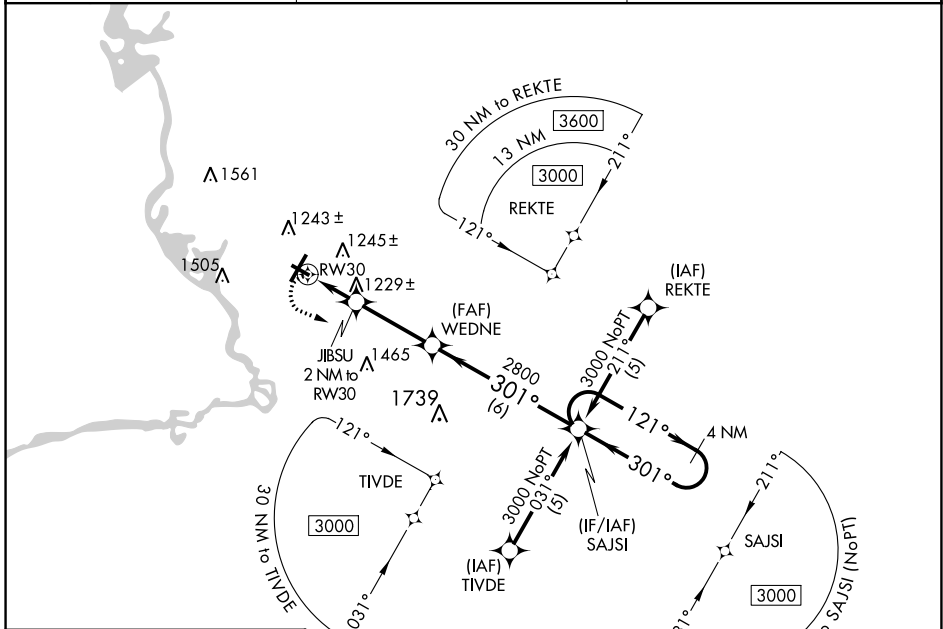
STEVENS POINT MUNI (STE)

RNP APCH - GPS.

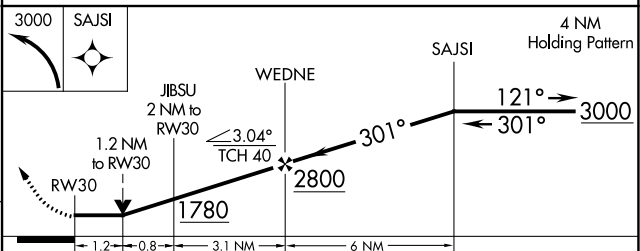
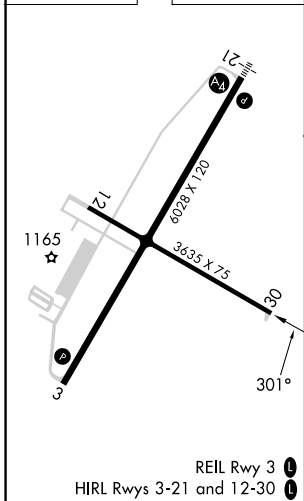
**▼** Rwy 30 helicopter visibility reduction below 3/4 SM NA. When local altimeter setting not received, use Mosinee altimeter setting and increase all MDA 60 feet, increase LNAV Cat C and D visibility 1/4 SM. VDP NA when using Mosinee altimeter setting.

**MISSED APPROACH:**  
Climbing left turn to 3000 direct SAJSI and hold.

AWOS-3 <b>119.275</b>	MINNEAPOLIS CENTER <b>124.4 317.7</b>	UNICOM <b>122.7 (CTAF)</b>
--------------------------	--	-------------------------------



ELEV 1110	TDZE 1108
-----------	-----------



CATEGORY	A	B	C	D
LNAV MDA	1520-1	412 (500-1)	1520-1 1/8	412 (500-1 1/8)
<b>CIRCLING</b>	1580-1 470 (500-1)	1600-1 490 (500-1)	1860-2 1/4 750 (800-2 1/4)	1860-2 1/2 750 (800-2 1/2)

EC-3, 22 FEB 2024 to 21 MAR 2024

EC-3, 22 FEB 2024 to 21 MAR 2024