

RNAV (GPS) RWY 32

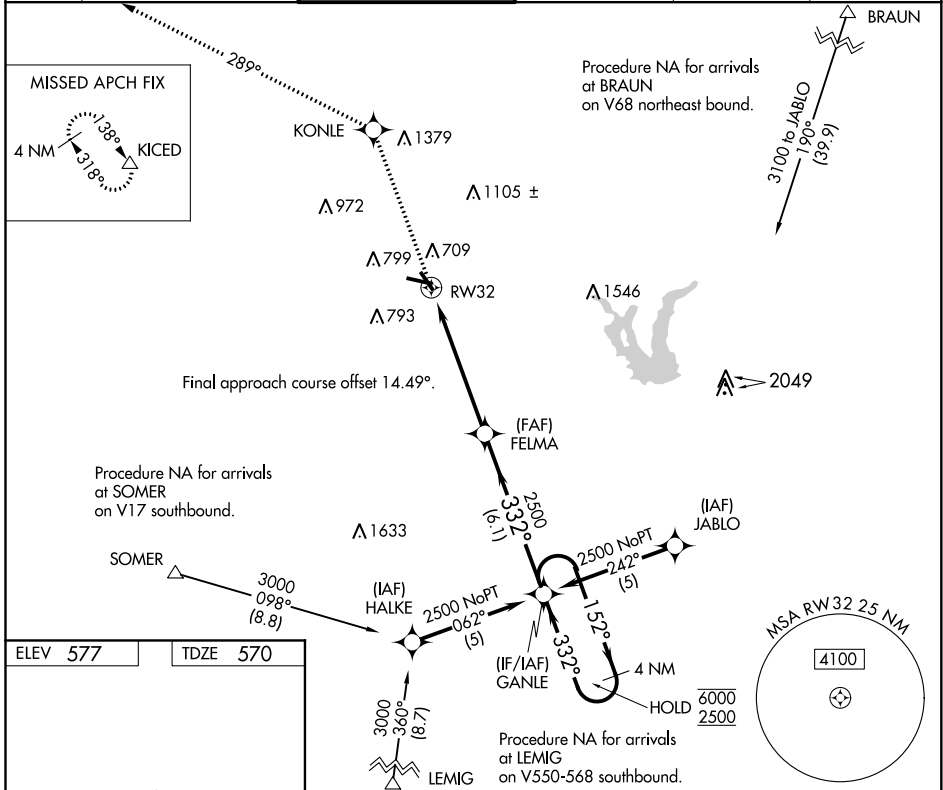
STINSON MUNI (SSF)

APP CRS 332°	Rwy Idg TDZE Apt Elev	3756 570 577
------------------------	-----------------------------	---

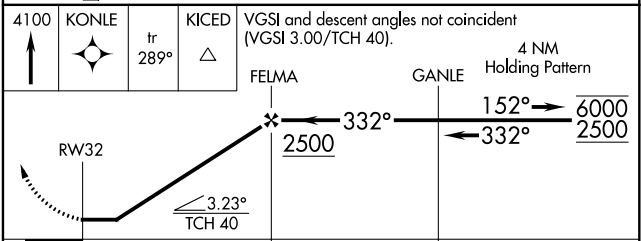
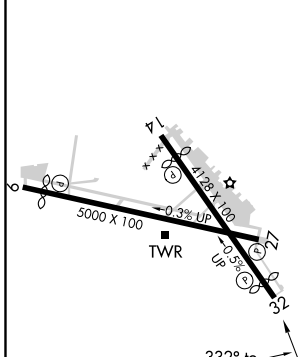
RNP APCH.
 ▼ Rwy 32 helicopter visibility reduction below 1 SM NA.
 Straight-in Rwy 32 NA at night, Circling Rwy 9, 32 NA at night.

MISSED APPROACH: Climb to 4100 direct KONLE and on track 289° to KICED and hold.

ATIS 128.8	SAN ANTONIO APP CON 125.7 290.225	STINSON TOWER ★ 118.2 (CTAF) 379.9	GND CON 121.7 379.9	CLNC DEL 121.7	UNICOM 122.95
----------------------	---	--	-------------------------------	--------------------------	-------------------------



ELEV 577	TDZE 570
----------	----------



CATEGORY	A	B	C	D
LNAV MDA	1020-1	450 (500-1)	1020-1 3/8 450 (500-1 3/8)	NA
CIRCLING	1040-1 463 (500-1)	1100-1 523 (600-1)	1100-1 1/2 523 (600-1 1/2)	NA

SC-3, 25 FEB 2021 to 25 MAR 2021

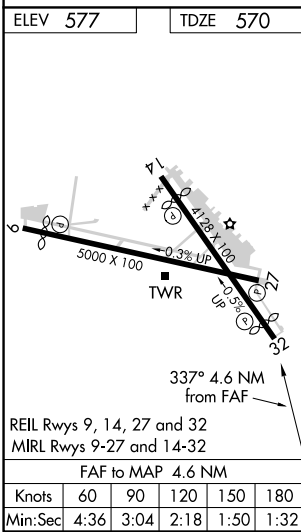
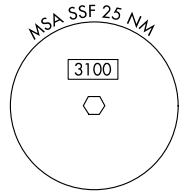
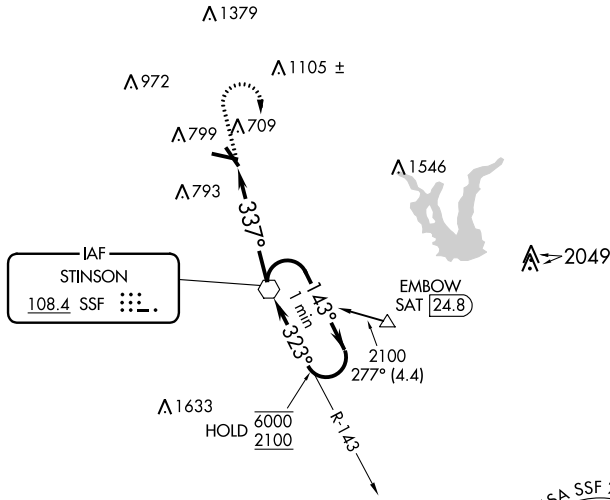
SC-3, 25 FEB 2021 to 25 MAR 2021

VOR SSF 108.4	APP CRS 337°	Rwy Idg 3756 TDZE 570 Apt Elev 577
-------------------------	------------------------	---

VOR RWY 32

STINSON MUNI (SSF)

<p>▽ Rwy 32 helicopter visibility reduction below 1 SM NA. Straight-in Rwy 32 NA at night, Circling Rwy 9, 32 NA at night.</p>			<p>MISSED APPROACH: Climb to 1400 then climbing right turn to 2500 direct SSF VOR and hold.</p>		
ATIS 128.8	SAN ANTONIO APP CON 125.7 290.225	STINSON TOWER* 118.2(CTAF) 379.9	GND CON 121.7 379.9	CLNC DEL 121.7	UNICOM 122.95



1400	2500	SSF	VGSI and descent angles not coincident (VGSI 3.00/TCH 40).	
		SSF VOR	One Minute Holding Pattern	
		6000 2100		
CATEGORY	A	B	C	D
S-32	1020-1	450 (500-1)	1020-1 ³ / ₈ 450 (500-1 ³ / ₈)	NA
CIRCLING	1040-1 463 (500-1)	1100-1 523 (600-1)	1100-1 ¹ / ₂ 523 (600-1 ¹ / ₂)	NA

SC-3, 25 FEB 2021 to 25 MAR 2021

SC-3, 25 FEB 2021 to 25 MAR 2021