

LOC I-SPW 110.9	APP CRS 121°	Rwy Idg TDZE Apt Elev	6001 1339 1339
---------------------------	------------------------	-----------------------------	---

ILS or LOC RWY 12

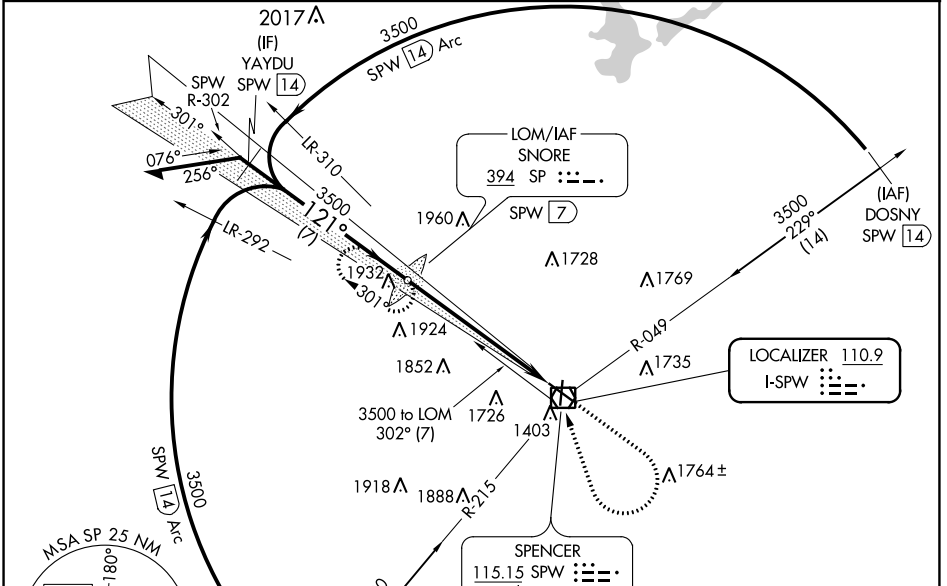
SPENCER MUNI (SPW)

ADF or DME required.

NA For inop ALS, increase S-LOC 12 Cats C and D visibility to 1 1/2 SM. When local altimeter setting not received, use Estherville altimeter setting and increase S-ILS 12 DA to 1599 feet; increase all MDAs 60 feet and S-LOC 12 visibility Cat C/D 1/2 SM, and Circling visibility Cat C/D 1/2 SM. For inop ALS, when using Estherville altimeter setting, increase S-LOC 12 Cats C and D visibility to 1 1/2 SM.

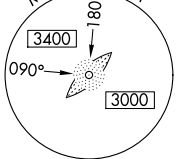
MALSR
MISSED APPROACH: Climb to 3500 then right turn direct SPW VOR/DME then on SPW VOR/DME R-302 to SNORE LOM/SPW VOR/DME 7 DME and hold.

ASOS 126.625	MINNEAPOLIS CENTER 127.75 257.7	UNICOM 123.0 (CTAF) 1
------------------------	---	--

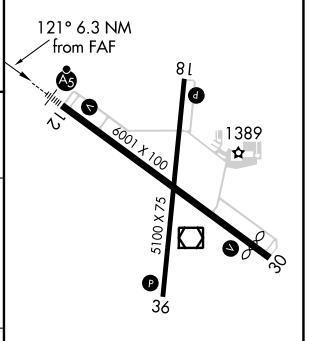
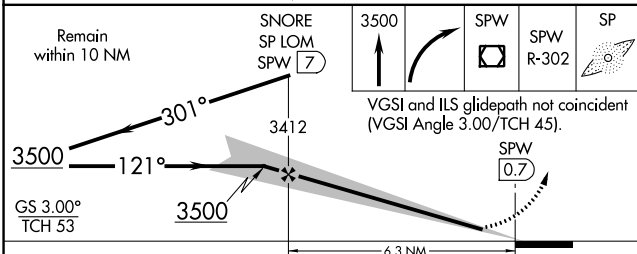


NC-3, 22 FEB 2024 to 21 MAR 2024

NC-3, 22 FEB 2024 to 21 MAR 2024



ELEV 1339	TDZE 1339
-----------	-----------



CATEGORY	A	B	C	D
S-ILS 12	1539-1/2 200 (200-1/2)			
S-LOC 12	1900-1/2 561 (600-1/2)	1900-1 1/4 561 (600-1 1/4)		
C CIRCLING	1900-1 561 (600-1)	2100-2 1/4 761 (800-2 1/4)	2100-2 1/2 761 (800-2 1/2)	

REIL Rwy 18, 30 and 36 **1**
MRL Rwy 12-30 and 18-36 **1**

FAF to MAP 6.3 NM

Knots	60	90	120	150	180
Min:Sec	6:18	4:12	3:09	2:31	2:06

WAAS CH 56517 W12A	APP CRS 121°	Rwy Idg TDZE Apt Elev	6001 1339 1339
--	------------------------	-----------------------------	---

RNAV (GPS) RWY 12

SPENCER MUNI (SPW)

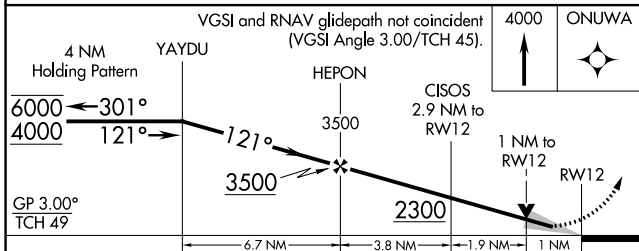
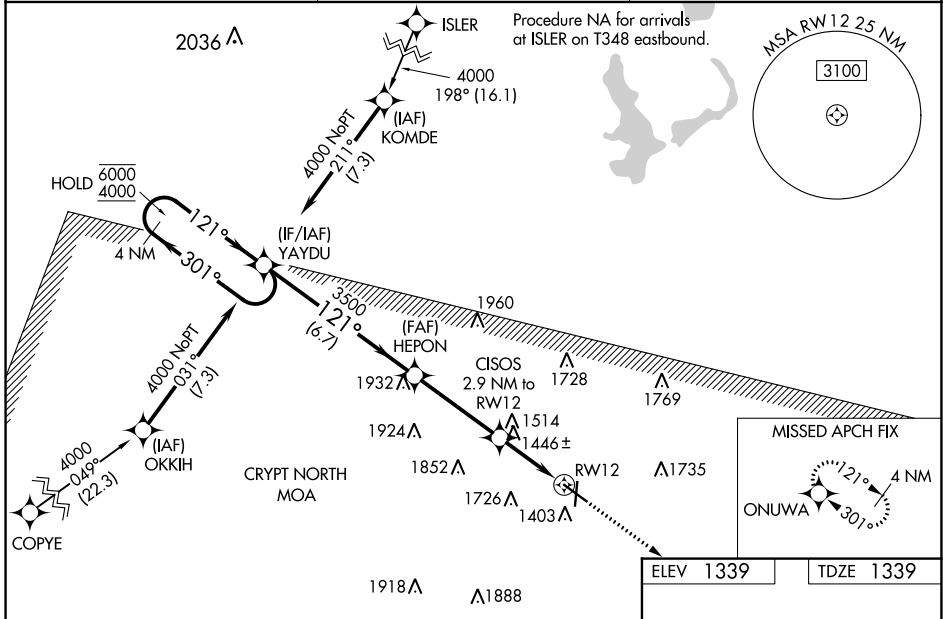
RNP APCH-GPS.

Baro-VNAV and VDP NA when using Estherville altimeter setting. For uncompensated Baro-VNAV systems, LNAV/VNAV NA below -21°C or above 54°C. When local altimeter setting not received, use Estherville altimeter setting: increase LPV DA to 1599 feet, LNAV/VNAV DA to 1650 feet; increase all MDAs 60 feet, and visibility LNAV Cat C/D 1/8 SM, and Circling Cat C/D 1/4 SM. For inop ALS when using Estherville altimeter setting, increase LNAV/VNAV all Cats visibility to 7/8 SM and LNAV Cats C/D to 1 SM. For inop ALS, increase LNAV/VNAV all Cats visibility to 3/4 SM and LNAV Cat C/D to 1 SM.

MALSRL
A5

MISSED APPROACH:
Climb to 4000 direct ONUWA and hold.

ASOS 126.625	MINNEAPOLIS CENTER 127.75 257.7	UNICOM 123.0 (CTAF)
------------------------	---	-------------------------------



ELEV 1339	TDZE 1339
-----------	-----------

121° to RWY12

81

1389

36

52 X 0015

30

REIL Rwy 18, 30 and 36

MIRL Rwy 12-30 and 18-36

CATEGORY	A	B	C	D
LPV DA		1539-1/2	200 (200-1/2)	
LNAV/VNAV DA		1590-1/2	251 (300-1/2)	
LNAV MDA	1700-1/2	361 (400-1/2)	1700-5/8	361 (400-5/8)
CIRCLING	1760-1 421 (500-1)	1800-1 461 (500-1)	2100-2 1/4 761 (800-2 1/4)	2100-2 1/2 761 (800-2 1/2)

NC-3, 22 FEB 2024 to 21 MAR 2024

NC-3, 22 FEB 2024 to 21 MAR 2024

WAAS CH 61333 W18A	APP CRS 181°	Rwy ldg TDZE 1338 Apt Elev 1339	5100
--	------------------------	---	-------------

RNAV (GPS) RWY 18

SPENCER MUNI (SPW)

⚠ Baro-VNAV and VDP NA when using Estherville altimeter setting. For uncompensated Baro-VNAV systems, LNAV/VNAV NA below -20°C (-4°F) or above 54°C (130°F). DME/DME RNP-0.3 NA. When local altimeter setting not received, use Estherville altimeter setting and increase all DA/MDA 60 feet; increase LNAV/VNAV all Cats visibility to 1 1/8 mile.

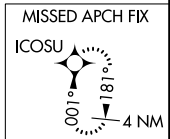
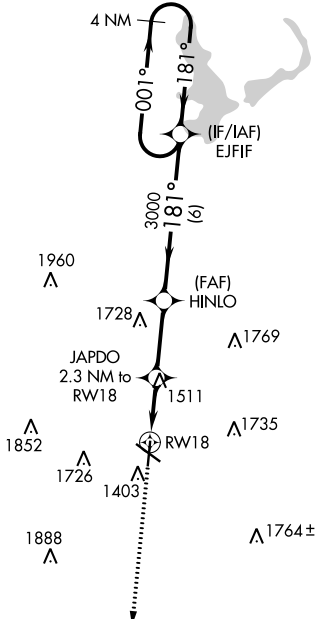
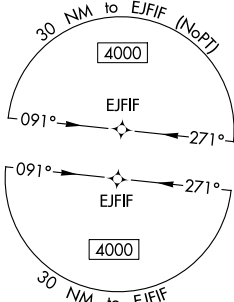
MISSED APPROACH:
Climb to 4000 direct ICOSU and hold.

ASOS 126.625	MINNEAPOLIS CENTER 127.75 257.7	UNICOM 123.0 (CTAF) ①
------------------------	---	---------------------------------

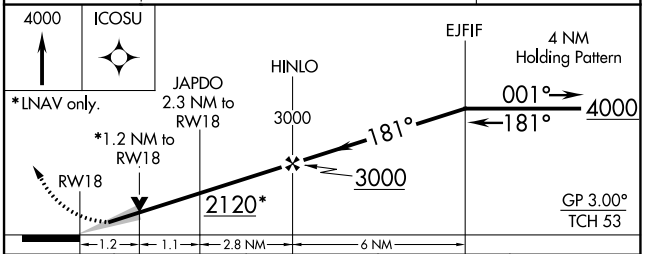
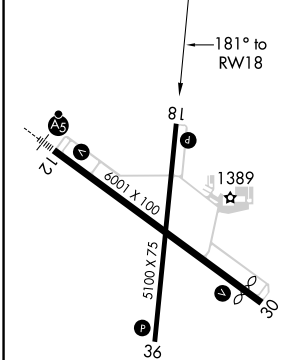
NC-3, 22 FEB 2024 to 21 MAR 2024

NC-3, 22 FEB 2024 to 21 MAR 2024

△ 2036



ELEV 1339	TDZE 1338
-----------	-----------



CATEGORY	A	B	C	D
LPV DA	1588-1	250 (300-1)		NA
LNAV/VNAV DA	1608-1	270 (300-1)		NA
LNAV MDA	1780-1	442 (500-1)		NA
C CIRCLING	1780-1 441 (500-1)	1820-1 481 (500-1)		NA

REIL Rwy 18, 30 and 36 ①
MIRL Rwy 12-30 and 18-36 ①

SPENCER, IOWA
Amdt 1A 05FEB15

43°10'N-95°12'W

RNAV (GPS) RWY 18

SPENCER MUNI (SPW)

WAAS CH 87133 W30A	APP CRS 301°	Rwy Idg TDZE Apt Elev	5511 1338 1339
--	------------------------	-----------------------------	---

RNAV (GPS) RWY 30

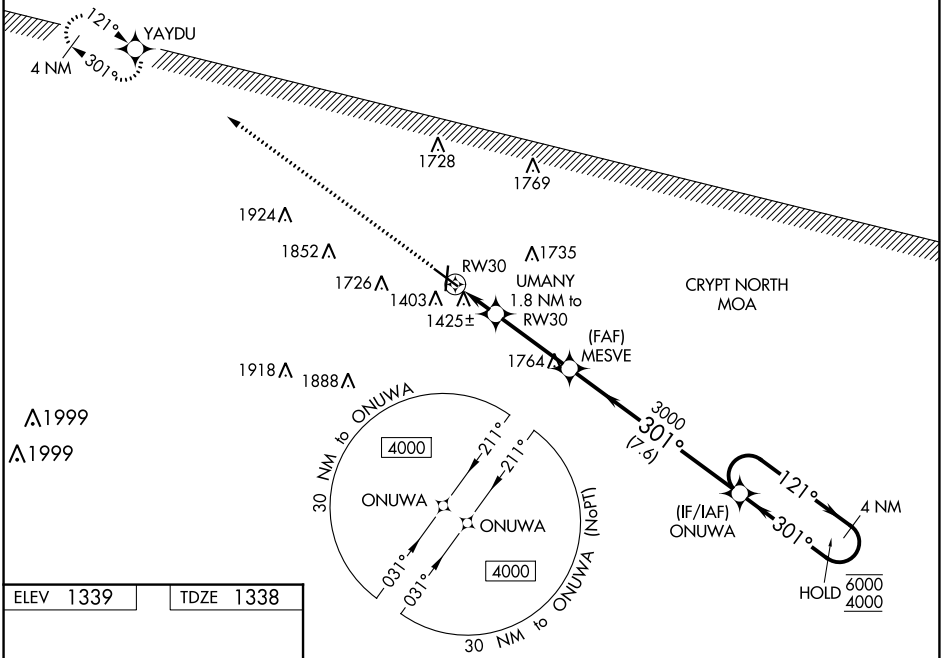
SPENCER MUNI (SPW)

RNP APCH-GPS.

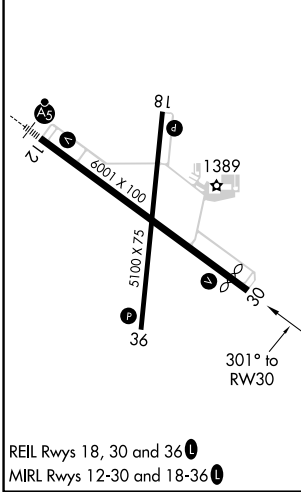
Baro-VNAV and VDP NA when using Estherville altimeter setting. For uncompensated Baro-VNAV systems, LNAV/VNAV NA below -20°C or above 54°C. When local altimeter setting not received, use Estherville altimeter setting: increase LPV DA to 1648 feet, LNAV/VNAV DA to 1683 feet and all visibilities 1/8 SM; increase all MDAs 60 feet and visibility Cats C and D 1/4 SM.

MISSED APPROACH: Climb to 4000 direct YAYDU and hold.

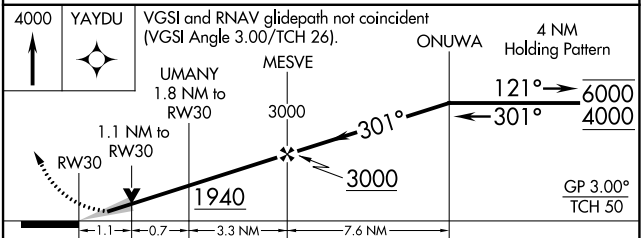
ASOS 126.625	MINNEAPOLIS CENTER 127.75 257.7	UNICOM 123.0 (CTAF) 0
------------------------	---	---------------------------------



ELEV 1339	TDZE 1338
-----------	-----------



REIL Rwy 18, 30 and 36
MIRL Rwy 12-30 and 18-36



CATEGORY	A	B	C	D
LPV DA		1588-3/4	250 (300-3/4)	
LNAV/VNAV DA		1623-7/8	285 (300-7/8)	
LNAV MDA	1720-1	382 (400-1)	1720-1 1/8	382 (400-1 1/8)
CIRCLING	1760-1 421 (500-1)	1800-1 461 (500-1)	2100-2 1/4 761 (800-2 1/4)	2100-2 1/2 761 (800-2 1/2)

NC-3, 22 FEB 2024 to 21 MAR 2024

NC-3, 22 FEB 2024 to 21 MAR 2024

WAAS CH 82233 W36A	APP CRS 001°	Rwy Idg TDZE Apt Elev	5100 1337 1339
--	------------------------	-----------------------------	---

RNAV (GPS) RWY 36

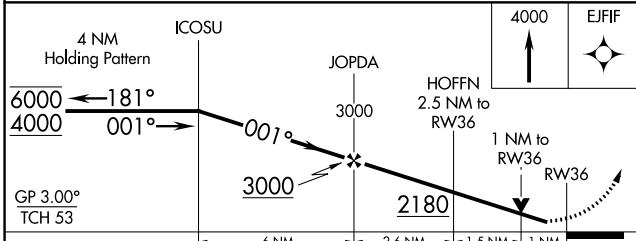
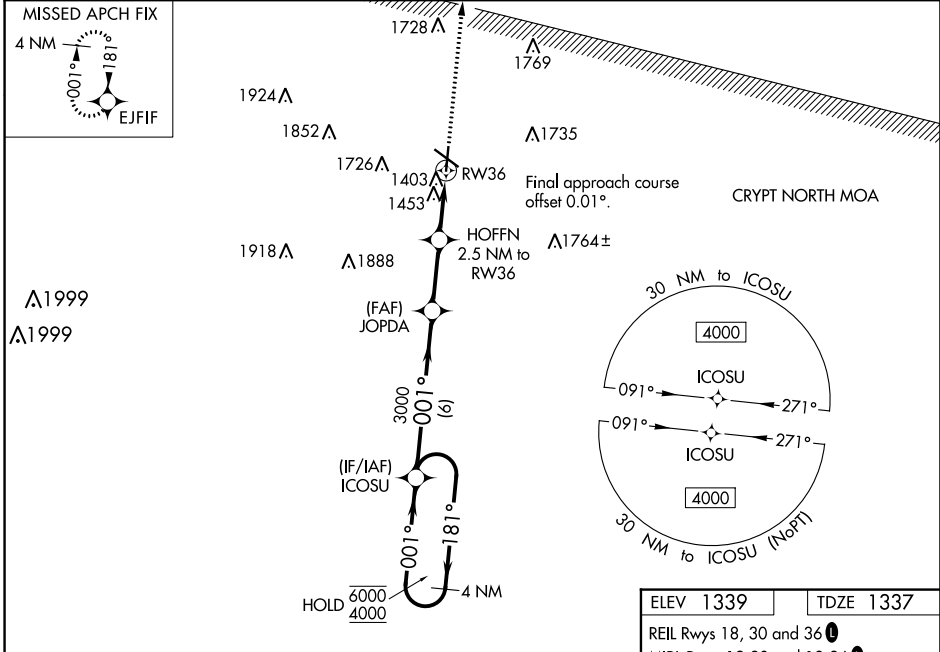
SPENCER MUNI (SPW)

RNP APCH-GPS.

⚠ Baro-VNAV and VDP NA when using Estherville altimeter setting. Rwy 36 helicopter visibility reduction below 1 SM NA. For uncompensated Baro-VNAV systems, LNAV/VNAV NA below -20° C or above 54° C. When local altimeter setting not received, use Estherville altimeter setting: increase LPV DA to 1648 feet, LNAV/VNAV DA to 1792 feet and LNAV/VNAV visibility ¼ SM; increase all MDAs 60 feet.

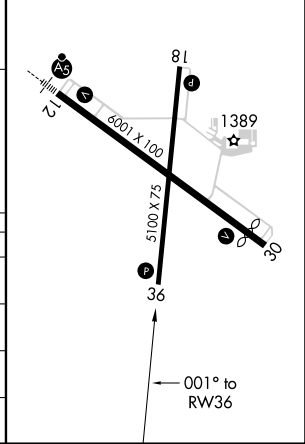
MISSED APPROACH:
Climb to 4000 direct EJFIF and hold, continue climb-in-hold to 4000.

ASOS 126.625	MINNEAPOLIS CENTER 127.75 257.7	UNICOM 123.0 (CTAF) 0
------------------------	---	---------------------------------



ELEV 1339	TDZE 1337
-----------	-----------

REIL Rwy 18, 30 and 36
MIRL Rwy 12-30 and 18-36



CATEGORY	A	B	C	D
LPV DA	1588-1	251 (300-1)		NA
LNAV/VNAV DA	1732-1½	395 (400-1½)		NA
LNAV MDA	1720-1	383 (400-1)		NA
CIRCLING	1760-1	1800-1		NA
	421 (500-1)	461 (500-1)		

NC-3, 22 FEB 2024 to 21 MAR 2024

NC-3, 22 FEB 2024 to 21 MAR 2024

VOR/DME SPW 115.15 Chan 98(Y)	APP CRS 292°	Rwy Idg TDZE Apt Elev	5511 1338 1339
---	------------------------	-----------------------------	---

VOR RWY 30

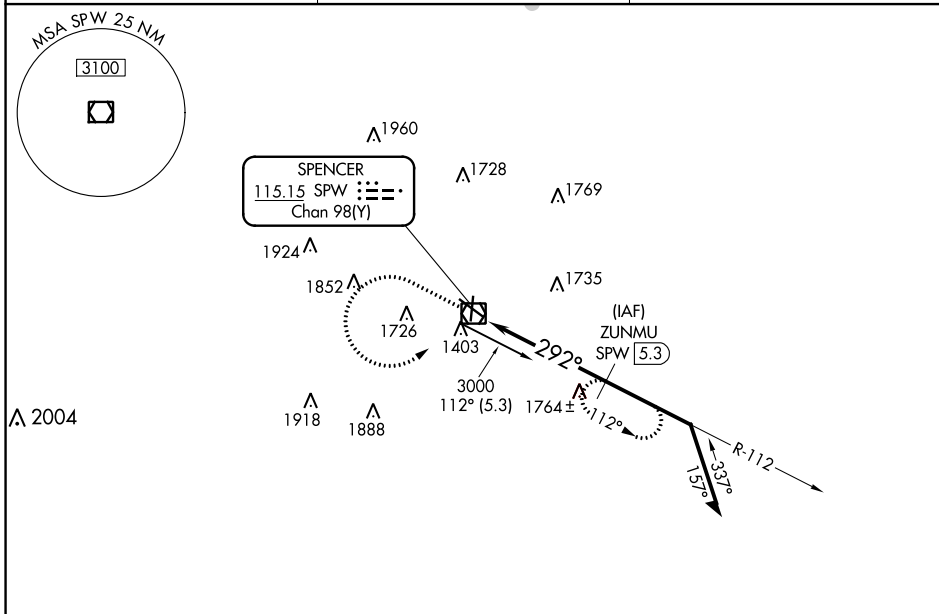
SPENCER MUNI (SPW)

DME required.

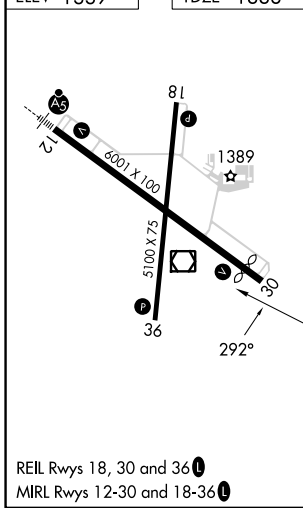
⚠ VDP NA when using Estherville altimeter setting.
⚠ When local altimeter setting not received, use Estherville altimeter setting and increase all MDA 60 feet and increase S-30 Cat C/D visibility ½ SM and Circling Cat C/D visibility ¼ SM.

MISSED APPROACH: Climb to 3000, then left turn direct SPW VOR/DME, then on SPW VOR/DME R-112 to ZUNMU/SPW 5.3 DME and hold.

ASOS 126.625	MINNEAPOLIS CENTER 127.75 257.7	UNICOM 123.0 (CTAF)
------------------------	---	-------------------------------



ELEV 1339	TDZE 1338
-----------	-----------



3000	SPW R-112	ZUNMU SPW 5.3	ZUNMU SPW 5.3	Remain within 10 NM
SPW VOR/DME	SPW 2.4	≤ 3.01° TCH 40	3000	112°
2.2 NM		2.9 NM		
3000	292°	3000	292°	3000
VGSI and descent angles not coincident (VGSI Angle 3.00/TCH 26).				
CATEGORY	A	B	C	D
S-30	2080-1 742 (800-1)	2080-1¼ 742 (800-1¼)	2080-2	742 (800-2)
C CIRCLING	2080-1 741 (800-1)	2080-1¼ 741 (800-1¼)	2100-2¼ 761 (800-2¼)	2100-2½ 761 (800-2½)

NC-3, 22 FEB 2024 to 21 MAR 2024

NC-3, 22 FEB 2024 to 21 MAR 2024