

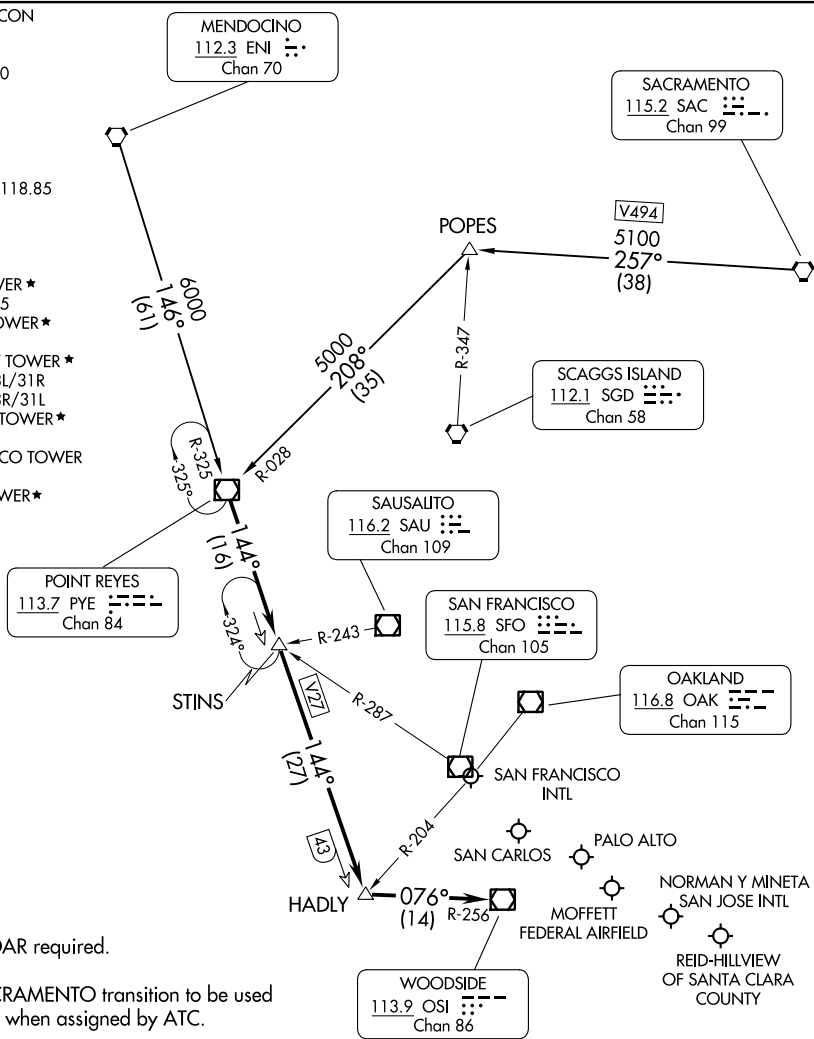
(PYE.PYE3) 23334

# POINT REYES THREE ARRIVAL

AL-375 (FAA)

SAN FRANCISCO, CALIFORNIA

NORCAL APP CON  
 133.95 317.6  
 KNUQ ATIS  
 124.175 283.0  
 PAO ATIS  
 135.275  
 RHV ATIS  
 125.2  
 SFO D-ATIS  
 113.7 115.8 118.85  
 SJC D-ATIS  
 126.95  
 SQL ATIS  
 125.9  
 MOFFETT TOWER \*  
 119.55 259.65  
 PALO ALTO TOWER \*  
 118.6  
 REID-HILLVIEW TOWER \*  
 119.8 RWY 13L/31R  
 126.1 RWY 13R/31L  
 SAN CARLOS TOWER \*  
 119.0 326.2  
 SAN FRANCISCO TOWER  
 120.5 269.1  
 SAN JOSE TOWER \*  
 124.0 257.6



NOTE: RADAR required.

NOTE: SACRAMENTO transition to be used only when assigned by ATC.

NOTE: Chart not to scale.

## ARRIVAL ROUTE DESCRIPTION

MENDOCINO TRANSITION (ENI.PYE3): From over ENI VORTAC on ENI R-146 and PYE R-325 to PYE VOR/DME. Thence. . .

SACRAMENTO TRANSITION (SAC.PYE3): From over SAC VORTAC on SAC R-257 and PYE R-028 to PYE VOR/DME. Thence. . .

. . . From over PYE VOR/DME on PYE R-144 to HADLY, then on OSI R-256 to OSI VOR/DME. Expect RADAR vectors to final approach course.

# POINT REYES THREE ARRIVAL

(PYE.PYE3) 22JUN17

SAN FRANCISCO, CALIFORNIA

SW-2, 22 FEB 2024 to 21 MAR 2024

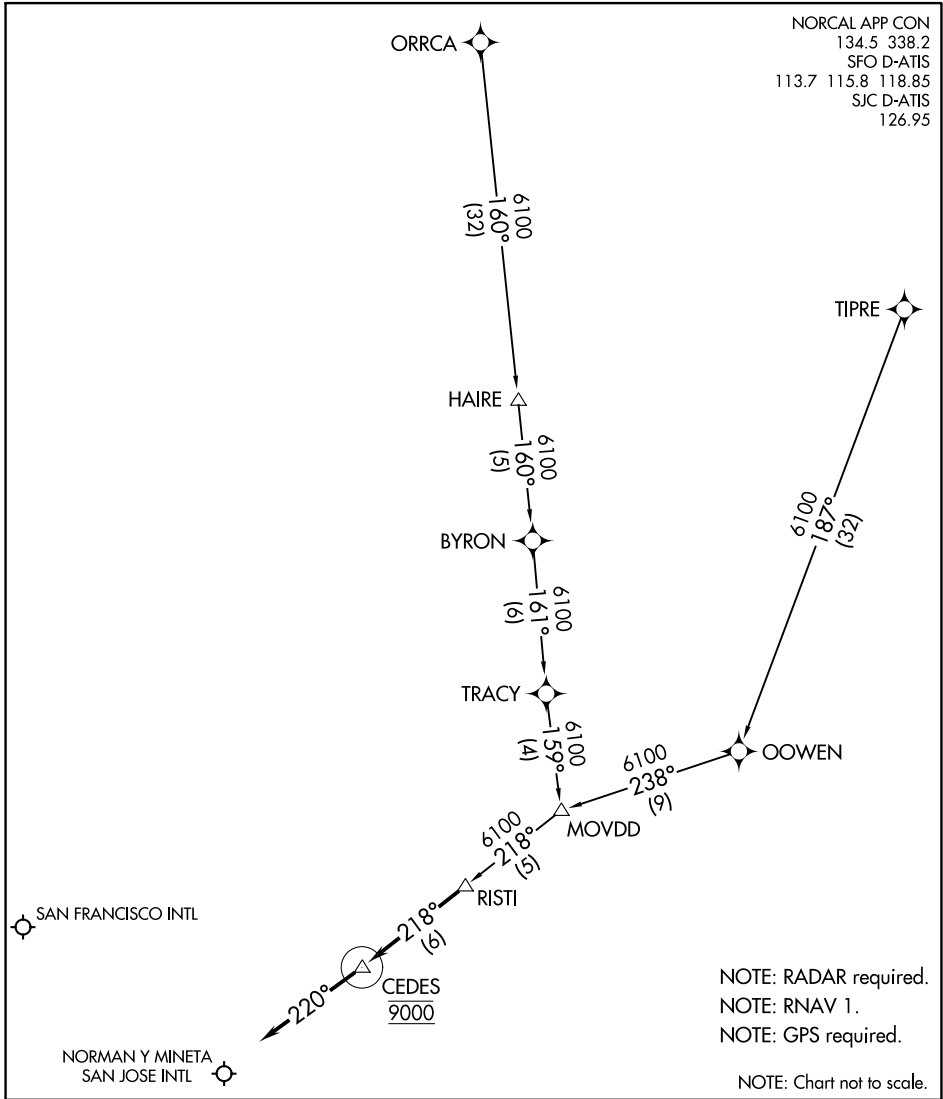
SW-2, 22 FEB 2024 to 21 MAR 2024

# RISTI ONE ARRIVAL (RNAV)

AL-375 (FAA)

SAN FRANCISCO, CALIFORNIA

NORCAL APP CON  
 134.5 338.2  
 SFO D-ATIS  
 113.7 115.8 118.85  
 SJC D-ATIS  
 126.95



SW-2, 22 FEB 2024 to 21 MAR 2024

SW-2, 22 FEB 2024 to 21 MAR 2024

NOTE: RADAR required.  
 NOTE: RNAV 1.  
 NOTE: GPS required.

NOTE: Chart not to scale.

## ARRIVAL ROUTE DESCRIPTION

ORRCA TRANSITION (ORRCA.RISTI1)

TIPRE TRANSITION (TIPRE.RISTI1)

LANDING KSFO/KSJC: From RISTI on track 218° to cross CEDES at 9000, then on heading 220° or as assigned by ATC. Expect RADAR vectors to final approach course.

# RISTI ONE ARRIVAL (RNAV)

SAN FRANCISCO, CALIFORNIA

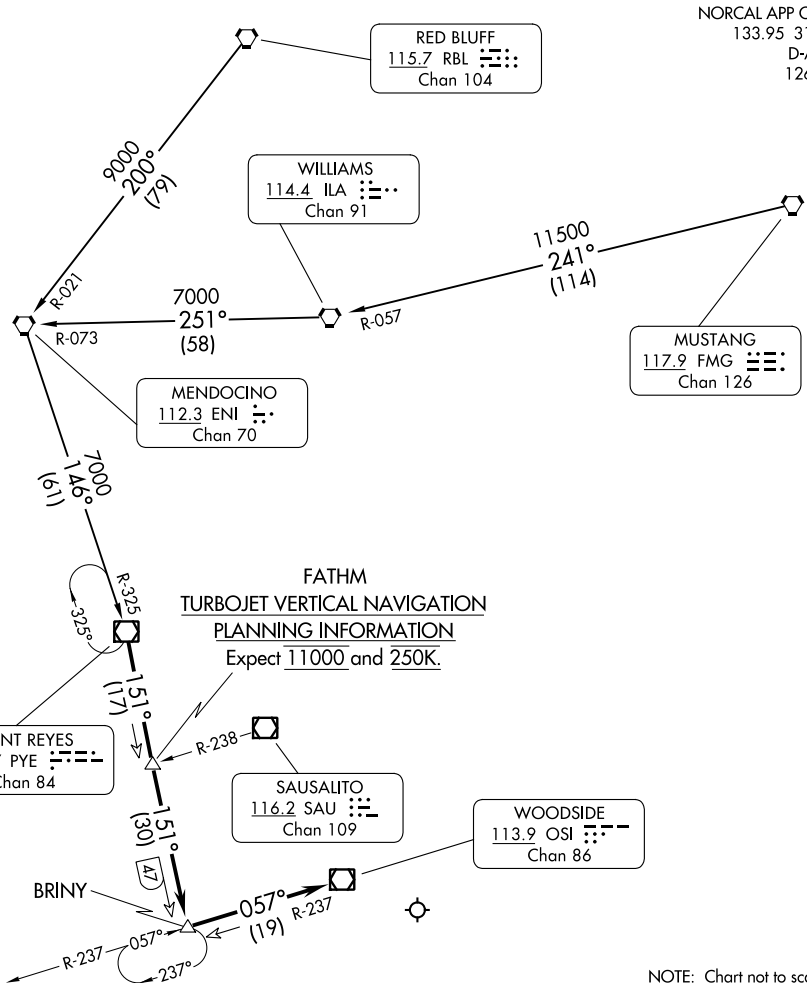
# BRINY TWO ARRIVAL

AL-693 (FAA)

NORMAN Y MINETA SAN JOSE INTL (SJC)

SAN JOSE, CALIFORNIA

NORCAL APP CON  
133.95 317.6  
D-ATIS  
126.95



SW-2, 22 FEB 2024 to 21 MAR 2024

SW-2, 22 FEB 2024 to 21 MAR 2024

NOTE: Chart not to scale.

## ARRIVAL ROUTE DESCRIPTION

MENDOCINO TRANSITION (ENI.BRINY2): From over ENI VORTAC via ENI R-146 and PYE R-325 to PYE VOR/DME. Thence . . . .

MUSTANG TRANSITION (FMG.BRINY2): From over FMG VORTAC via FMG R-241 to ILA VORTAC then via ILA R-251 to ENI VORTAC, then via ENI R-146 to PYE VOR/DME. Thence . . . .

RED BLUFF TRANSITION (RBL.BRINY2): From over RBL VORTAC via RBL R-200 and ENI R-146 to PYE VOR/DME. Thence . . . .

. . . . From over PYE VOR/DME via PYE R-151 to BRINY INT/DME, then via OSI R-237 to OSI VOR/DME. Expect RADAR vectors to Rwy 12R final approach course.

# BRINY TWO ARRIVAL

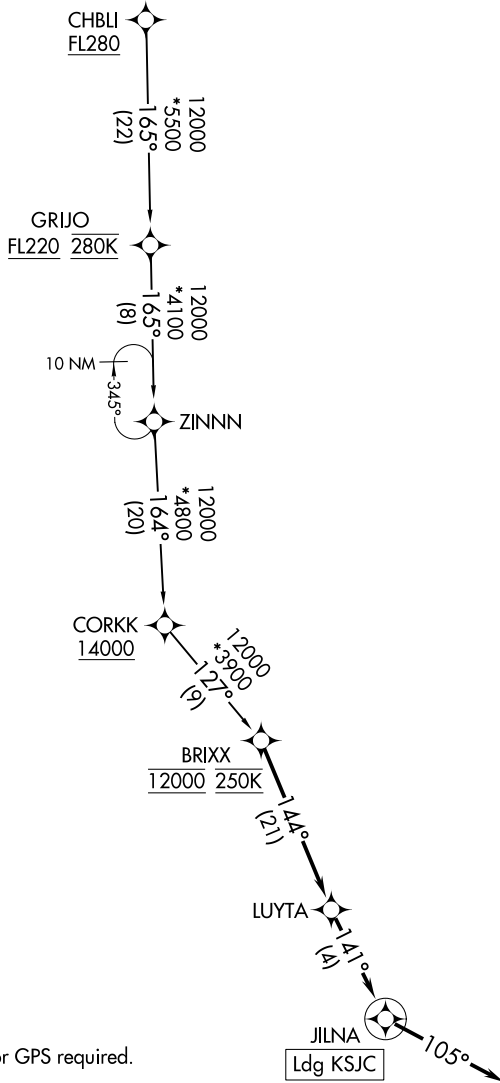
(BRXX.BRXX3) 21168

# BRXX THREE ARRIVAL (RNAV)

AL-693 (FAA)

NORMAN Y MINETA SAN JOSE INTL (SJC)  
SAN JOSE, CALIFORNIA

OAKLAND CENTER  
125.85 323.0  
NORCAL APP CON  
133.95 317.6  
D-ATIS  
126.95  
GND CON  
121.7  
SAN JOSE TOWER\*  
124.0 257.6



NOTE: RADAR required.  
NOTE: RNAV 1.  
NOTE: DME/DME/IRU or GPS required.

NOTE: Chart not to scale.

## ARRIVAL ROUTE DESCRIPTION

### CHBLI TRANSITION (CHBLI.BRXX3)

From BRXX on track 144° to LUYTA, then on track 141° to JILNA, then on heading 105° or as assigned by ATC. Expect RADAR vectors to final approach course.

# BRXX THREE ARRIVAL (RNAV)

(BRXX.BRXX3) 17JUN21

SAN JOSE, CALIFORNIA  
NORMAN Y MINETA SAN JOSE INTL (SJC)

SW-2, 22 FEB 2024 to 21 MAR 2024

SW-2, 22 FEB 2024 to 21 MAR 2024

(FRLON.FRLON2) 17173

# FRLON TWO ARRIVAL (RNAV)

AL-693 (FAA)

NORMAN Y MINETA SAN JOSE INTL (SJC)

SAN JOSE, CALIFORNIA

OAKLAND CENTER  
 125.85 323.0  
 NORCAL APP CON  
 133.95 317.6  
 D-ATIS  
 126.95  
 SAN JOSE TOWER\*  
 124.0 257.6  
 GND CON  
 121.7

GGULF  
FL280

11000  
154°  
(61)

FRLON  
13000 280K

8000  
145°  
(10)

STLER  
12000 250K

7000  
145°  
(11)

MNTNA  
7000  
105°  
(8)

MISSS  
7000  
105°  
(11)

PPEGS  
5500 210K  
140°

NOTE: RADAR required.  
 NOTE: RNAV 1.  
 NOTE: DME/DME/IRU or GPS required.

SW-2, 22 FEB 2024 to 21 MAR 2024

SW-2, 22 FEB 2024 to 21 MAR 2024

NOTE: Chart not to scale.

## ARRIVAL ROUTE DESCRIPTION

### GGULF TRANSITION (GGULF.FRLON2)

From FRLON on track 145° to cross STLER at 12000 and at 250K, then on track 145° to MNTNA, then on track 105° to cross MISSS at 7000, then on track 105° to cross PPEGS at 5500 and at 210K, then on track 140°. Expect RADAR vectors to final approach course.

# FRLON TWO ARRIVAL (RNAV)

(FRLON.FRLON2) 21JUL16

SAN JOSE, CALIFORNIA

NORMAN Y MINETA SAN JOSE INTL (SJC)

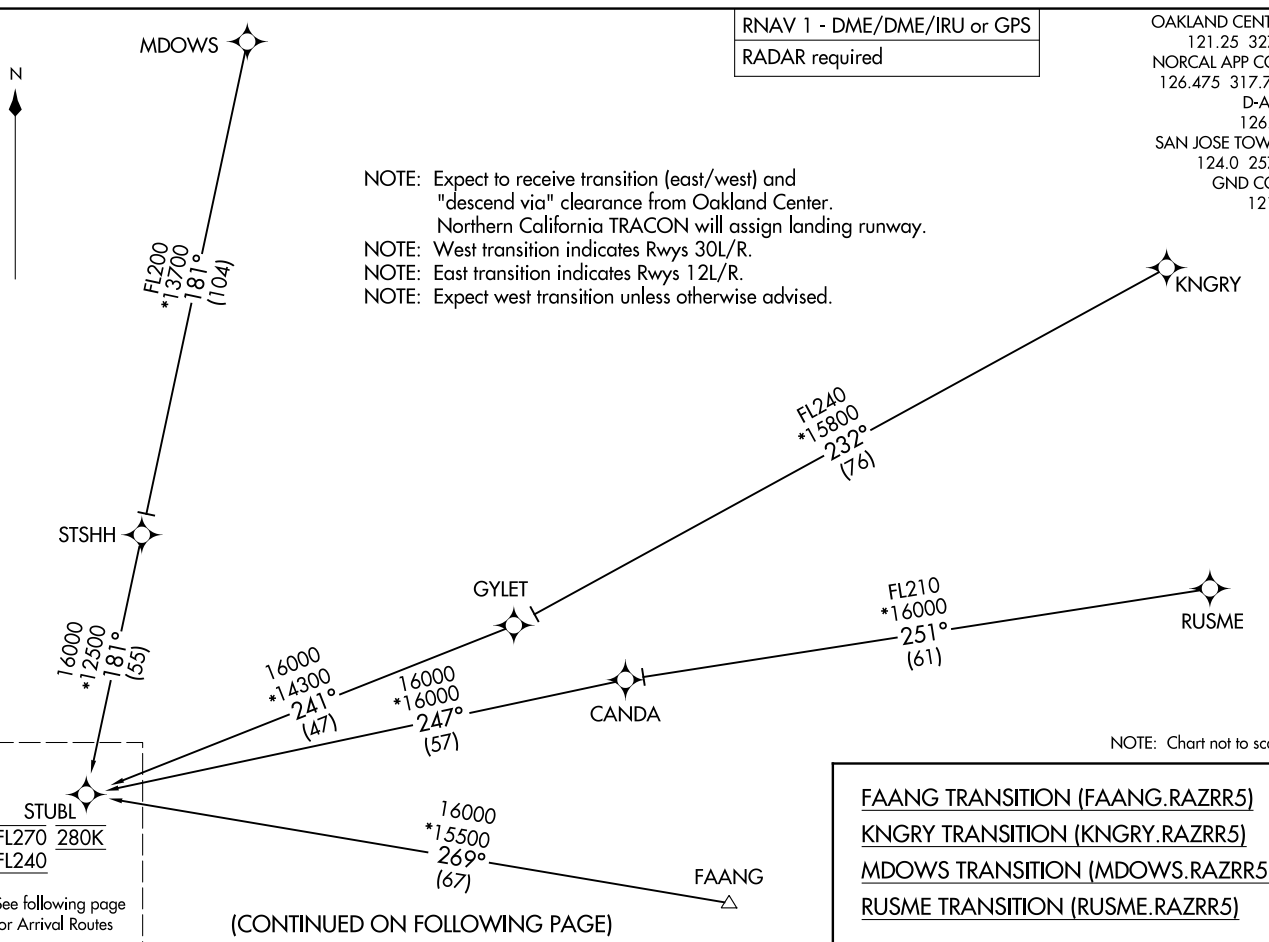
RNAV 1 - DME/DME/IRU or GPS  
RADAR required

OAKLAND CENTER  
121.25 327.0  
NORCAL APP CON  
126.475 317.775  
D-ATIS  
126.95  
SAN JOSE TOWER\*  
124.0 257.6  
GND CON  
121.7

(STUBL.RAZRR5) 22195  
RAZRR FIVE ARRIVAL (RNAV) Transition Routes

AL-693 (FAA) NORMAN Y MINETA SAN JOSE INTL (SJC)  
SAN JOSE, CALIFORNIA

NOTE: Expect to receive transition (east/west) and "descend via" clearance from Oakland Center. Northern California TRACON will assign landing runway.  
NOTE: West transition indicates Rwy's 30L/R.  
NOTE: East transition indicates Rwy's 12L/R.  
NOTE: Expect west transition unless otherwise advised.



STUBL  
FL270 280K  
FL240  
See following page for Arrival Routes

(CONTINUED ON FOLLOWING PAGE)

FAANG TRANSITION (FAANG.RAZRR5)  
KNGRY TRANSITION (KNGRY.RAZRR5)  
MDOWS TRANSITION (MDOWS.RAZRR5)  
RUSME TRANSITION (RUSME.RAZRR5)

NOTE: Chart not to scale.

RAZRR FIVE ARRIVAL (RNAV) Transition Routes  
(STUBL.RAZRR5) 140U22  
SAN JOSE, CALIFORNIA  
NORMAN Y MINETA SAN JOSE INTL (SJC)

RAZRR FIVE ARRIVAL (RNAV) (STUBL, RAZRR5) 140U22  
 ARRIVAL ROUTES  
 NORMAN Y MINETA SAN JOSE INTL (SJC)  
 SAN JOSE, CALIFORNIA

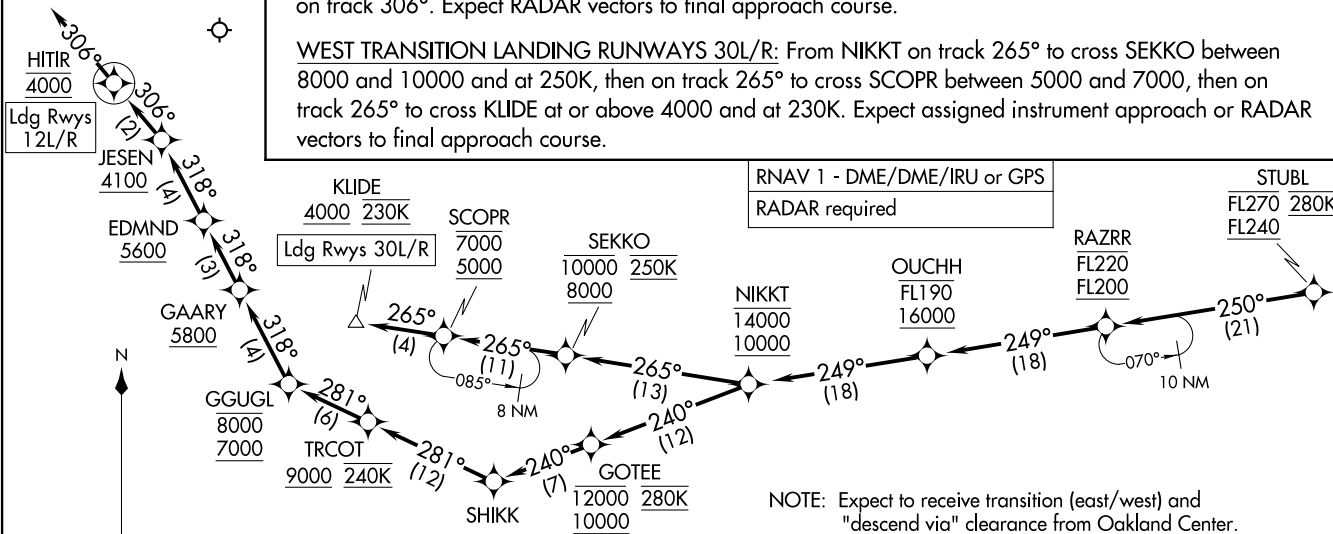
OAKLAND CENTER  
 121.25 327.0  
 NORCAL APP CON  
 126.475 317.775  
 D-ATIS  
 126.95  
 SAN JOSE TOWER\*  
 124.0 257.6  
 GND CON  
 121.7

ARRIVAL ROUTE DESCRIPTION

From STUBL on track 250° to cross RAZRR between FL200 and FL220, then on track 249° to cross OUCHH between 16000 and FL190, then on track 249° to cross NIKKT between 10000 and 14000.

EAST TRANSITION LANDING RUNWAYS 12L/R: From NIKKT on track 240° to cross GOTEE between 10000 and 12000 and at 280K, then on track 240° to SHIKK, then on track 281° to cross TRCOT at or above 9000 and at 240K, then on track 281° to cross GGUGL between 7000 and 8000, then on track 318° to cross GAARY at or above 5800, then on track 318° to cross EDMND at or above 5600, then on track 318° to cross JESEN at or above 4100, then on track 306° to cross HITIR at 4000. Expect RADAR vectors to final approach course.

WEST TRANSITION LANDING RUNWAYS 30L/R: From NIKKT on track 265° to cross SEKKO between 8000 and 10000 and at 250K, then on track 265° to cross SCOPR between 5000 and 7000, then on track 265° to cross KLIDE at or above 4000 and at 230K. Expect assigned instrument approach or RADAR vectors to final approach course.



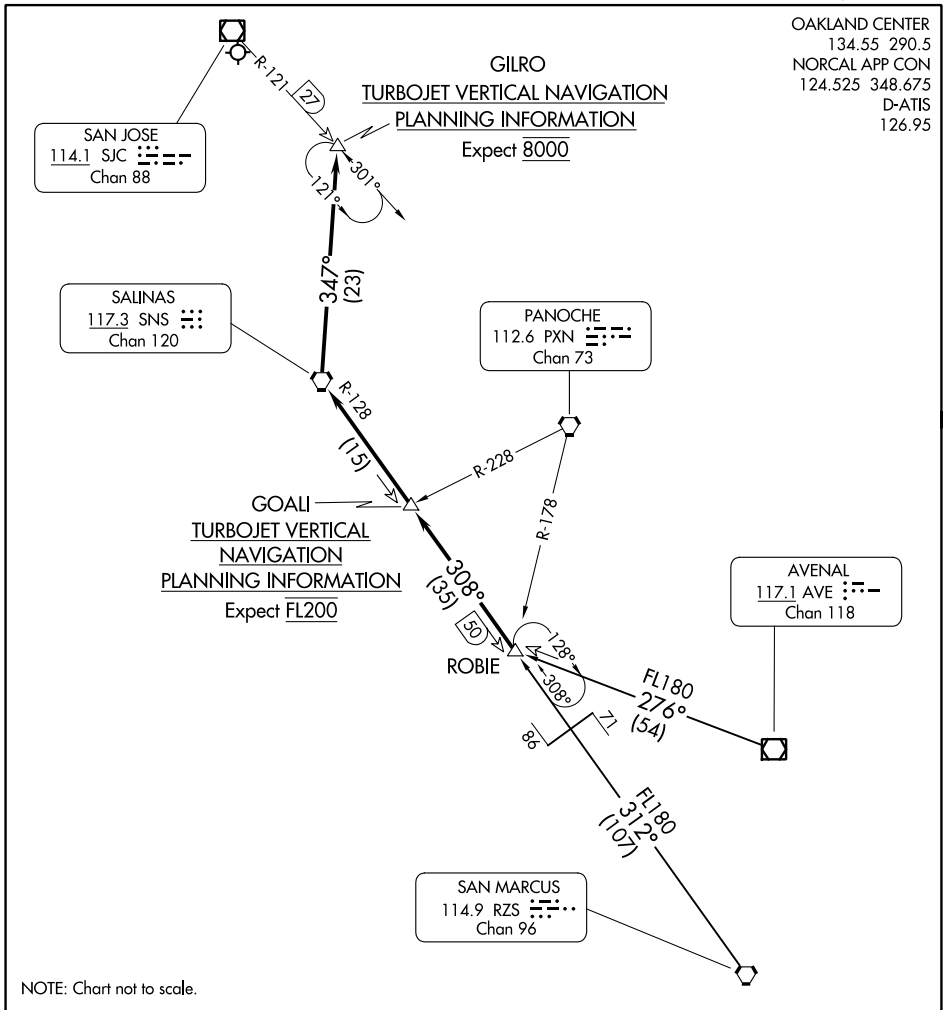
RNAV 1 - DME/DME/IRU or GPS  
 RADAR required

- NOTE: Expect to receive transition (east/west) and "descend via" clearance from Oakland Center. Northern California TRACON will assign landing runway.
- NOTE: West transition indicates Rwy 30L/R.
- NOTE: East transition indicates Rwy 12L/R.
- NOTE: Expect west transition unless otherwise advised.

(STUBL, RAZRR5) 22195  
 RAZRR FIVE ARRIVAL (RNAV) Arrival Routes  
 AL-693 (FAA) NORMAN Y MINETA SAN JOSE INTL (SJC)  
 SAN JOSE, CALIFORNIA

# ROBIE FIVE ARRIVAL

OAKLAND CENTER  
134.55 290.5  
NORCAL APP CON  
124.525 348.675  
D-ATIS  
126.95



SW-2, 22 FEB 2024 to 21 MAR 2024

SW-2, 22 FEB 2024 to 21 MAR 2024

NOTE: Chart not to scale.

**ARRIVAL ROUTE DESCRIPTION**

AVENAL TRANSITION (AVE.ROBIE5): From over AVE VOR/DME on AVE R-276 to ROBIE. Thence . . .

SAN MARCUS TRANSITION (RZS.ROBIE5): From over RZS VORTAC on RZS R-312 and SNS R-128 to ROBIE. Thence . . .

. . . From over ROBIE on SNS R-128 to SNS VORTAC. Then on SNS R-347 to GILRO. Expect the ILS RWY 30L approach.

FOR RUNWAY 12 OPERATIONS: Expect routing SNS direct SJC VOR/DME and RADAR vectors to final approach course.

# ROBIE FIVE ARRIVAL



(SILCN.SILCN6) 22195

# SILCN SIX ARRIVAL (RNAV)

NORMAN Y MINETA SAN JOSE INTL (SJC)

AL-693 (FAA)

SAN JOSE, CALIFORNIA

RNAV 1 - DME/DME/IRU or GPS

RADAR required

OAKLAND CENTER

134.55 290.5

NORCAL APP CON

124.525 348.675

D-ATIS

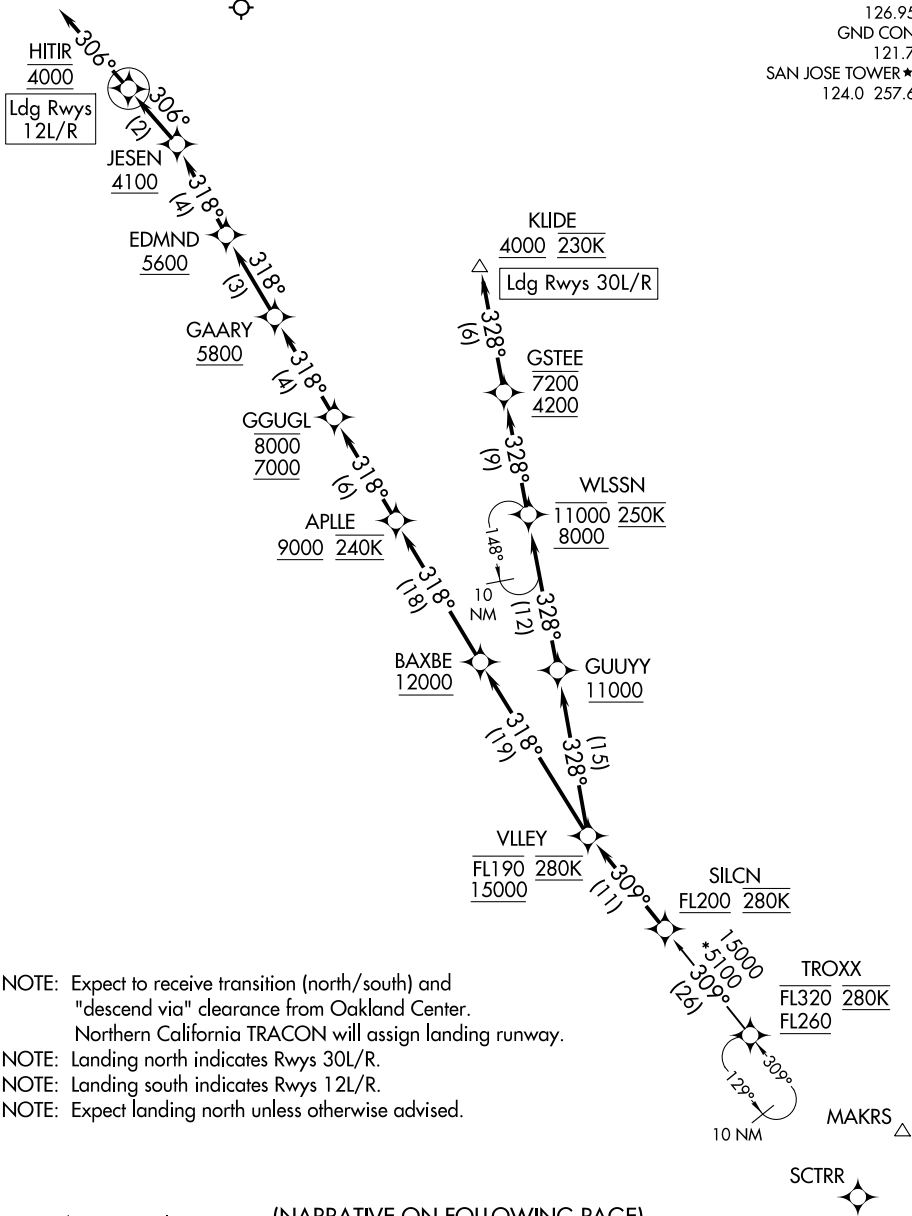
126.95

GND CON

121.7

SAN JOSE TOWER ★

124.0 257.6



- NOTE: Expect to receive transition (north/south) and "descend via" clearance from Oakland Center.
- Northern California TRACON will assign landing runway.
- NOTE: Landing north indicates Rwy 30L/R.
- NOTE: Landing south indicates Rwy 12L/R.
- NOTE: Expect landing north unless otherwise advised.

NOTE: Chart not to scale.

(NARRATIVE ON FOLLOWING PAGE)

# SILCN SIX ARRIVAL (RNAV)

(SILCN.SILCN6) 14JUL22

SAN JOSE, CALIFORNIA

NORMAN Y MINETA SAN JOSE INTL (SJC)

SW-2, 22 FEB 2024 to 21 MAR 2024

SW-2, 22 FEB 2024 to 21 MAR 2024

ARRIVAL ROUTE DESCRIPTION

TROXX TRANSITION (TROXX.SILCN6)

From SILCN on track 309° to cross VLLEY between 15000 and FL190 and at 280K.

SOUTH TRANSITION LANDING RUNWAYS 12L/R: From VLLEY on track 318° to cross BAXBE at or above 12000, then on track 318° to cross APLLE at or above 9000 and at 240K, then on track 318° to cross GGUGL between 7000 and 8000, then on track 318° to cross GAARY at or above 5800, then on track 318° to cross EDMND at or above 5600, then on track 318° to cross JESEN at or above 4100, then on track 306° to cross HITIR at 4000, then on track 306°. Expect RADAR vectors to final approach course.

NORTH TRANSITION LANDING RUNWAYS 30L/R: From VLLEY on track 328° to cross GUUYY at or above 11000, then on track 328° to cross WLSSN between 8000 and 11000 and at 250K, then on track 328° to cross GSTEE between 4200 and 7200, then on track 328° to cross KLIDE at or above 4000 and at 230K. Expect assigned instrument approach or RADAR vectors to final approach course.

SW-2, 22 FEB 2024 to 21 MAR 2024

SW-2, 22 FEB 2024 to 21 MAR 2024