

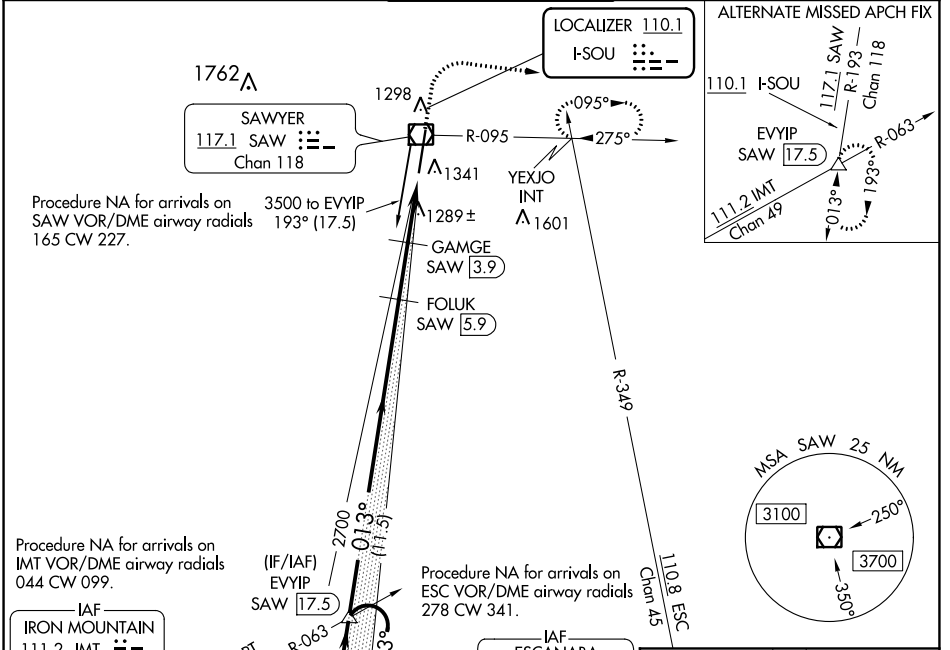
LOC I-SOU <b>110.1</b>	APP CRS <b>013°</b>	Rwy Idg TDZE Apt Elev	<b>9072</b> <b>1180</b> <b>1204</b>
---------------------------	------------------------	-----------------------------	---

# ILS or LOC RWY 1

## SAWYER INTL (SAW)

DME required for LOC only.		MALSR	MISSED APPROACH: Climb to 1700 then climbing right turn to 3000 on heading 101° and on SAW VOR/DME R-095 to YEXJO INT and hold.
Autopilot coupled approach NA below 1360 MSL.			

AWOS-3 <b>118.375</b>	MINNEAPOLIS CENTER <b>119.1 290.2</b>	SAWYER TOWER ★ <b>119.975 (CTAF)</b>	GND CON <b>121.65</b>	UNICOM <b>122.7</b>
--------------------------	--	---	--------------------------	------------------------



ELEV 1204	TDZE 1180
-----------	-----------



HIRL Rwy 1-19	REIL Rwy 19
---------------	-------------

9072 X 150

0.5% DOWN

013° 4.6 NM from FAF

CATEGORY	A	B	C	D
S-ILS 1	1380-½		200 (200-½)	
S-LOC 1	1580-½	400 (400-½)	1580-⅝	400 (400-⅝)
CIRCLING	1680-1	476 (500-1)	1820-1¾ 616 (700-1¾)	1820-2 616 (700-2)

EC-1, 20 MAY 2021 to 17 JUN 2021

EC-1, 20 MAY 2021 to 17 JUN 2021


WAAS CH <b>97431</b> <b>W01A</b>	APP CRS <b>013°</b>	Rwy Idg TDZE Apt Elev	<b>9072</b> <b>1180</b> <b>1204</b>
--	------------------------	-----------------------------	---

# RNAV (GPS) RWY 1


SAWYER INTL (SAW)

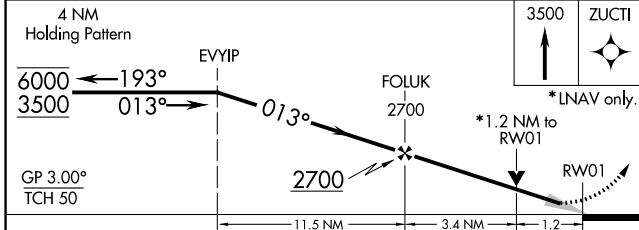
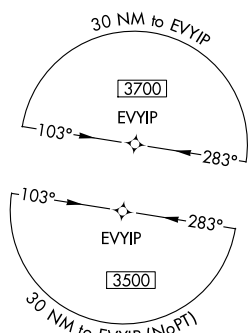
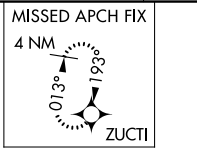
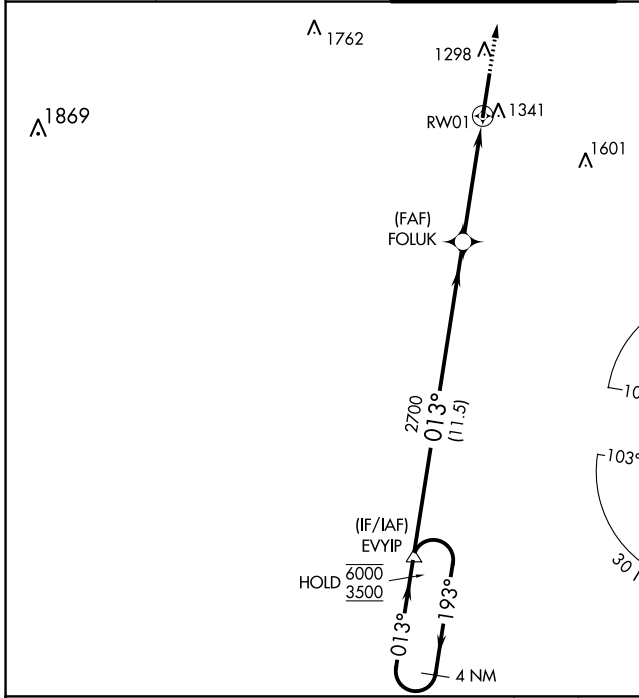
RNP APCH.

**▽** For inop ALS, increase LNAV Cat C/D visibility to 1 1/8 SM.  
For uncompensated Baro-VNAV systems, LNAV/VNAV NA below -17°C or above 54°C.


MALSR 

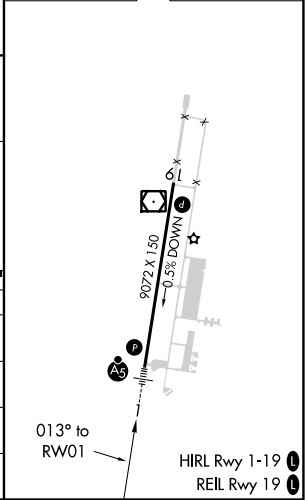
MISSED APPROACH:  
Climb to 3500 direct ZUCTI and hold.

AWOS-3 <b>118.375</b>	MINNEAPOLIS CENTER <b>119.1 290.2</b>	SAWYER TOWER ★ <b>119.975</b> (CTAF) 	GND CON <b>121.65</b>	UNICOM <b>122.7</b>
--------------------------	--	---	--------------------------	------------------------



ELEV 1204  TDZE 1180

CATEGORY	A	B	C	D
LPV DA		1380-1/2	200 (200-1/2)	
LNAV/VNAV DA		1503-1/2	323 (300-1/2)	
LNAV MDA	1600-1/2	420 (400-1/2)	1600-3/4	420 (400-3/4)
 CIRCLING	1680-1	476 (500-1)	1820-1 3/4 616 (700-1 3/4)	1820-2 616 (700-2)



EC-1, 20 MAY 2021 to 17 JUN 2021

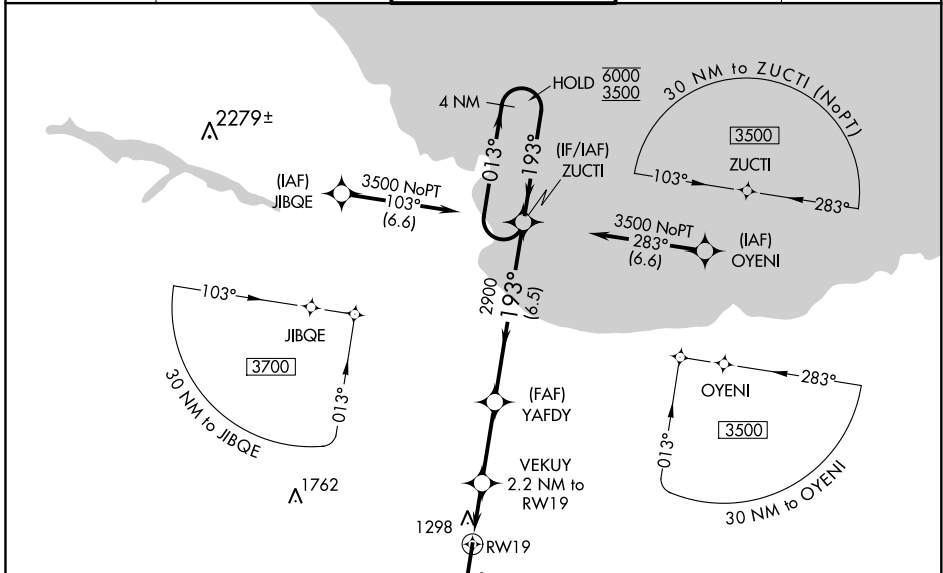
EC-1, 20 MAY 2021 to 17 JUN 2021

WAAS CH <b>86616</b> <b>W19A</b>	APP CRS <b>193°</b>	Rwy Idg TDZE Apt Elev	<b>9072</b> <b>1204</b> <b>1204</b>
--	------------------------	-----------------------------	---

# RNAV (GPS) RWY 19

SAWYER INTL (SAW)

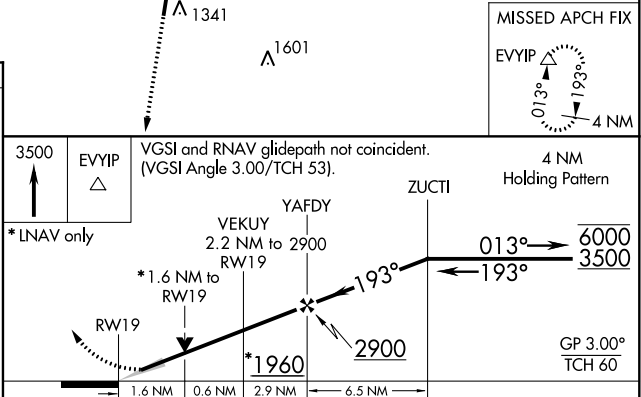
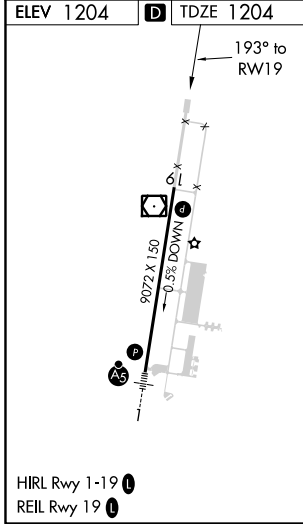
RNP APCH. ▼ For uncompensated Baro-VNAV systems, LNAV/VNAV NA below -17°C or above 54°C.		MISSED APPROACH: Climb to 3500 direct EVYIP and hold.		
AWOS-3 <b>118.375</b>	MINNEAPOLIS CENTER <b>119.1 290.2</b>	SAWYER TOWER ★ <b>119.975 (CTAF) ①</b>	GND CON <b>121.65</b>	UNICOM <b>122.7</b>



EC-1, 20 MAY 2021 to 17 JUN 2021

EC-1, 20 MAY 2021 to 17 JUN 2021

ELEV 1204	<b>D</b>	TDZE 1204
-----------	----------	-----------



CATEGORY	A	B	C	D
LPV DA		1404- <sup>3</sup> / <sub>4</sub>	200 (200- <sup>3</sup> / <sub>4</sub> )	
LNAV/VNAV DA		1521- <sup>7</sup> / <sub>8</sub>	317 (400- <sup>7</sup> / <sub>8</sub> )	
LNAV MDA	1620-1	416 (500-1)	1620-1 <sup>1</sup> / <sub>8</sub>	416 (500-1 <sup>1</sup> / <sub>8</sub> )
<b>C</b> CIRCLING	1680-1	476 (500-1)	1820-1 <sup>3</sup> / <sub>4</sub>	1820-2 616 (700-1 <sup>3</sup> / <sub>4</sub> ) 616 (700-2)

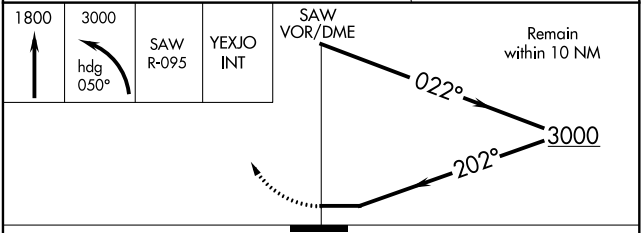
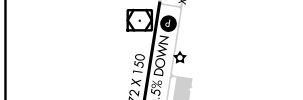
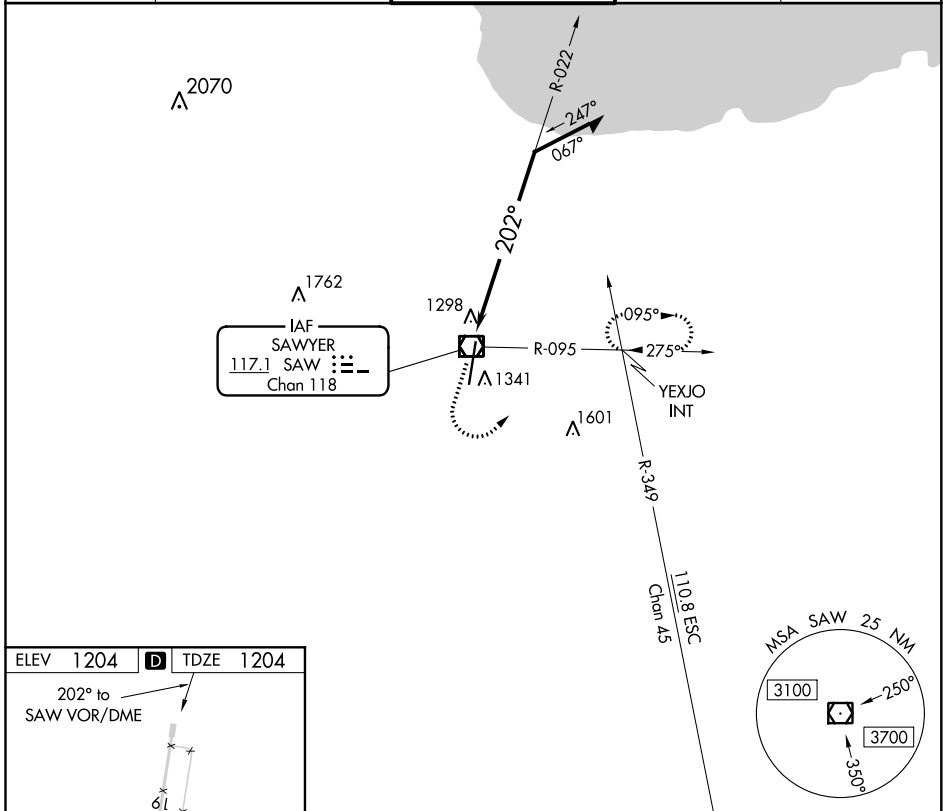
VOR/DME SAW <b>117.1</b> Chan 118	APP CRS <b>202°</b>	Rwy Idg TDZE Apt Elev	<b>9072</b> <b>1204</b> <b>1204</b>
---	------------------------	-----------------------------	---

# VOR RWY 19

SAWYER INTL (SAW)

**▽** MISSED APPROACH: Climb to 1800 then climbing left turn to 3000 on heading 050° and SAW VOR/DME R-095 to YEXJO Int and hold.

AWOS-3 <b>118.375</b>	MINNEAPOLIS CENTER <b>119.1 290.2</b>	SAWYER TOWER ★ <b>119.975 (CTAF)</b> <b>Ⓛ</b>	GND CON <b>121.65</b>	UNICOM <b>122.7</b>
--------------------------	--	--	--------------------------	------------------------



CATEGORY	A	B	C	D
S-19	1780-1	576 (600-1)	1780-1 <sup>5</sup> / <sub>8</sub>	576 (600-1 <sup>5</sup> / <sub>8</sub> )
<b>C</b> CIRCLING	1780-1	576 (600-1)	1820-1 <sup>3</sup> / <sub>4</sub> 616 (700-1 <sup>3</sup> / <sub>4</sub> )	1820-2 616 (700-2)