

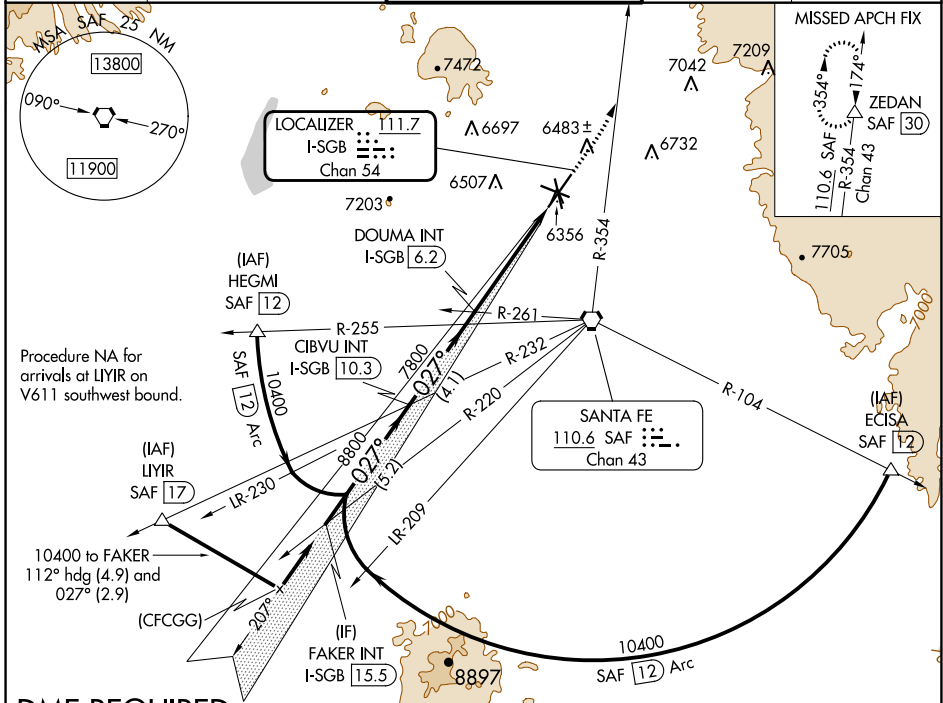
LOC/DME I-SGB <b>111.7</b> Chan 54	APP CRS <b>027°</b>	Rwy Idg TDZE Apt Elev	<b>8366</b> <b>6303</b> <b>6349</b>
--	------------------------	-----------------------------	---

# ILS or LOC RWY 2

SANTA FE RGNL (SAF)

**DME required.** MISSED APPROACH: Climb to 7300 then climbing left turn to 11000 on SAF VORTAC R-354 to ZEDAN/SAF 30 DME and hold.

ATIS <b>128.55</b>	ALBUQUERQUE CENTER <b>132.8 346.35</b>	SANTA FE TOWER ★ <b>119.5 (CTAF) 239.3</b>	GND CON <b>121.7</b>	UNICOM <b>122.95</b>
-----------------------	---	---	-------------------------	-------------------------

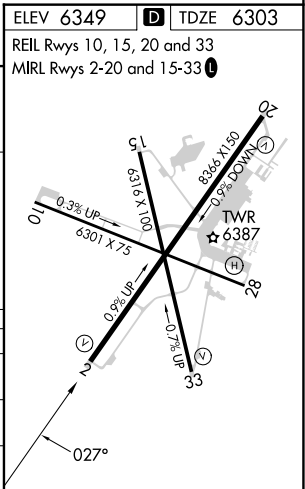


SW-1, 22 FEB 2024 to 21 MAR 2024

SW-1, 22 FEB 2024 to 21 MAR 2024

## DME REQUIRED

FAKER INT I-SGB 15.5	VGSi and ILS glidepath not coincident (VGSi Angle 3.00/TCH 69)		7300	11000	ZEDAN
	CIBVU INT I-SGB 10.3	DOUMA INT I-SGB 6.2	↑	SAF R-354	△
10400	8800	7800	* I-SGB 2.8 I-SGB 1.6 * LOC only		
GS 3.00° TCH 53	5.2 NM	4.1 NM	3.4 NM	1.2	
CATEGORY	A	B	C	D	
S-ILS 2	6503-¾		200 (200-¾)		
S-LOC 2	6740-1	437 (400-1)	6740-1¼	437 (400-1¼)	
CIRCLING	6800-1	6920-1	7340-3	7660-3	
	451 (500-1)	571 (600-1)	991 (1000-3)	1311 (1400-3)	



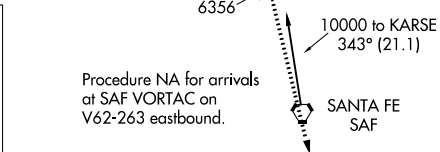
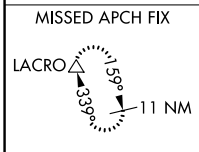
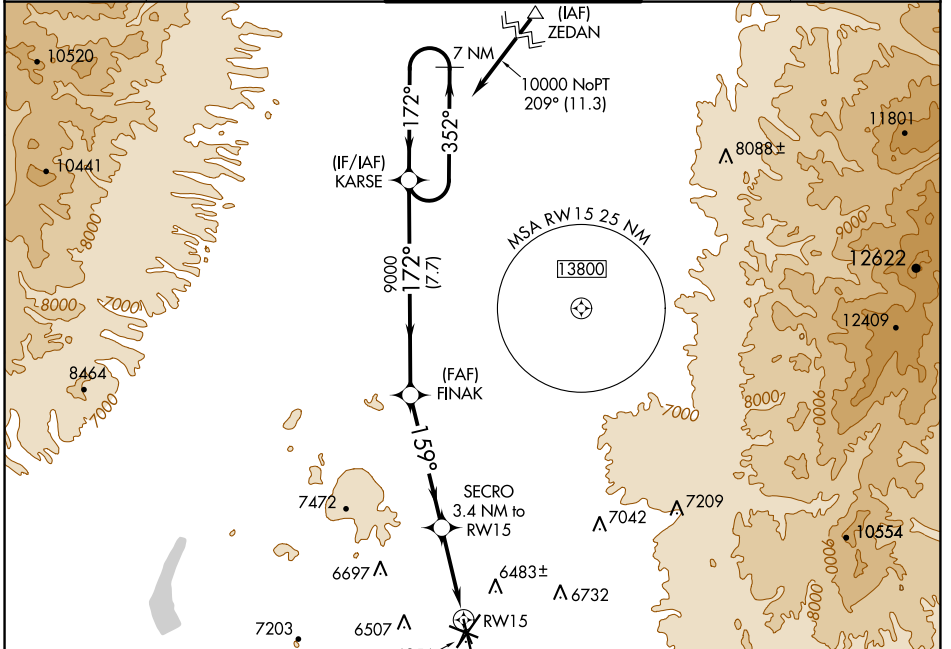
WAAS CH <b>87039</b> W15A	APP CRS <b>159°</b>	Rwy Idg TDZE Apt Elev	<b>5221</b> <b>6319</b> <b>6349</b>
---------------------------------	------------------------	-----------------------------	---

# RNAV (GPS) RWY 15

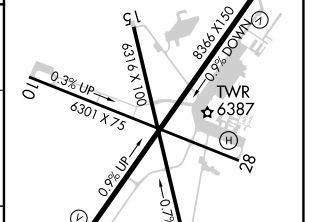
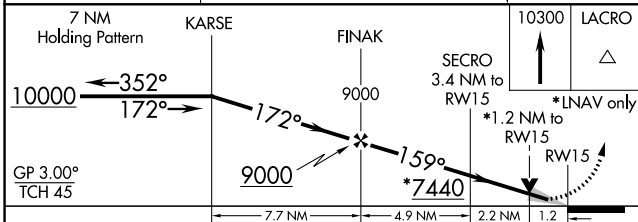
SANTA FE RGNL (SAF)

**▽** For uncompensated Baro-VNAV systems, LNAV/VNAV NA below -18°C (0°F) or above 47°C (117°F). DME/DME RNP-0.3 NA. **MISSED APPROACH:** Climb to 10300 direct LACRO and hold, continue climb-in-hold to 10300.

ATIS <b>128.55</b>	ALBUQUERQUE CENTER <b>132.8 346.35</b>	SANTA FE TOWER ★ <b>119.5 (CTAF) 239.3</b>	GND CON <b>121.7</b>	UNICOM <b>122.95</b>
-----------------------	---	---	-------------------------	-------------------------



ELEV 6349	<b>D</b>	TDZE 6319
-----------	----------	-----------



CATEGORY	A	B	C	D
LPV DA		6569-3/4	250 (300-3/4)	
LNAV/VNAV DA		6569-3/4	250 (300-3/4)	
LNAV MDA	6740-1	421 (400-1)	6740-1 1/4	421 (400-1 1/4)
<b>C</b> CIRCLING	6800-1 451 (500-1)	6920-1 571 (600-1)	7340-3 991 (1000-3)	7660-3 1311 (1400-3)

REIL Rwy 10, 15, 20 and 33  
MIRL Rwy 2-20 and 15-33

SW-1, 22 FEB 2024 to 21 MAR 2024

SW-1, 22 FEB 2024 to 21 MAR 2024

WAAS CH <b>63039</b> W02A	APP CRS <b>027°</b>	Rwy Idg TDZE <b>6303</b> Apt Elev <b>6349</b>
---------------------------------	------------------------	---

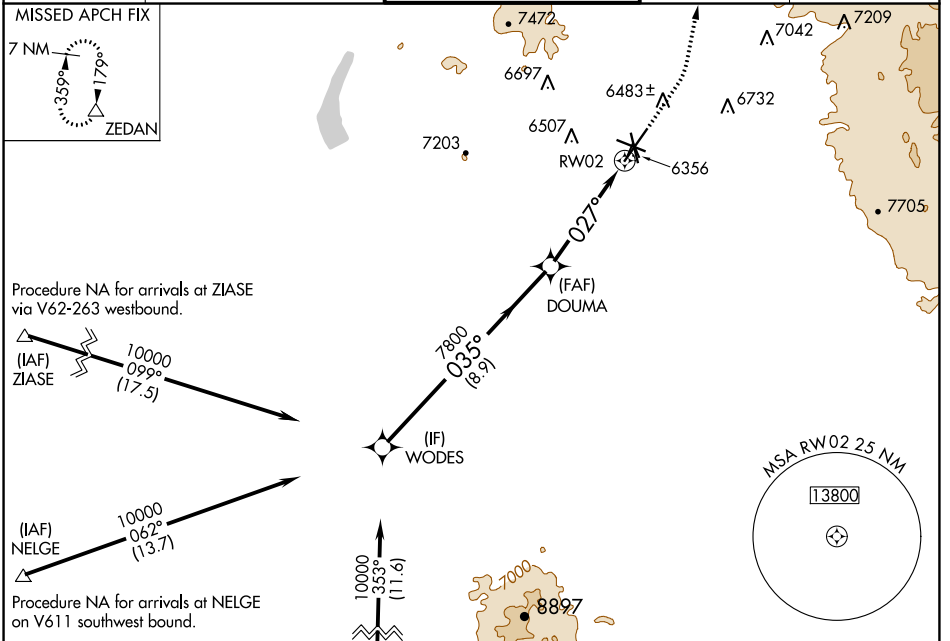
# RNAV (GPS) RWY 2

SANTA FE RGNL (SAF')

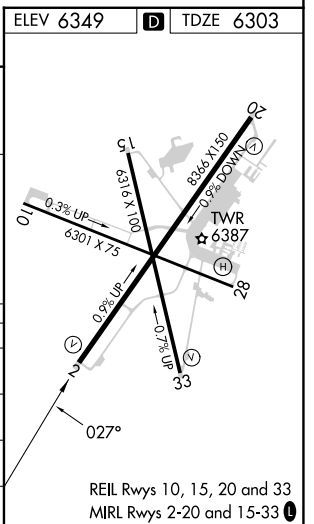
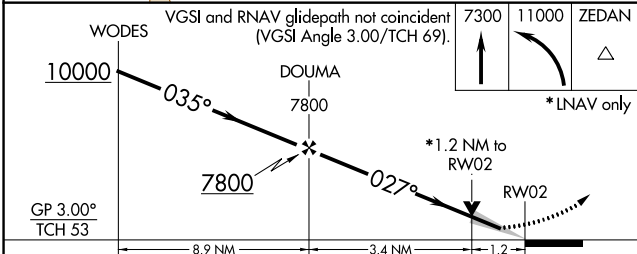
**▽** For uncompensated Baro-VNAV systems, LNAV/VNAV NA below -18°C (0°F) or above 45°C (113°F). DME/DME RNP-0.3 NA.

**▲** MISSED APPROACH: Climb to 7300 then climbing left turn to 11000 direct ZEDAN and hold.

ATIS <b>128.55</b>	ALBUQUERQUE CENTER <b>132.8 346.35</b>	SANTA FE TOWER ★ <b>119.5 (CTAF) 239.3</b>	GND CON <b>121.7</b>	UNICOM <b>122.95</b>
-----------------------	---	---	-------------------------	-------------------------



ELEV 6349 **D** TDZE 6303



CATEGORY	A	B	C	D
LPV DA		6503-3/4	200 (200-3/4)	
LNAV/VNAV DA		6553-7/8	250 (300-7/8)	
LNAV MDA	6740-1	437 (400-1)	6740-1 1/4	437 (400-1 1/4)
<b>C</b> CIRCLING	6800-1 451 (500-1)	6920-1 571 (600-1)	7340-3 991 (1000-3)	7660-3 1311 (1400-3)

SW-1, 22 FEB 2024 to 21 MAR 2024

SW-1, 22 FEB 2024 to 21 MAR 2024

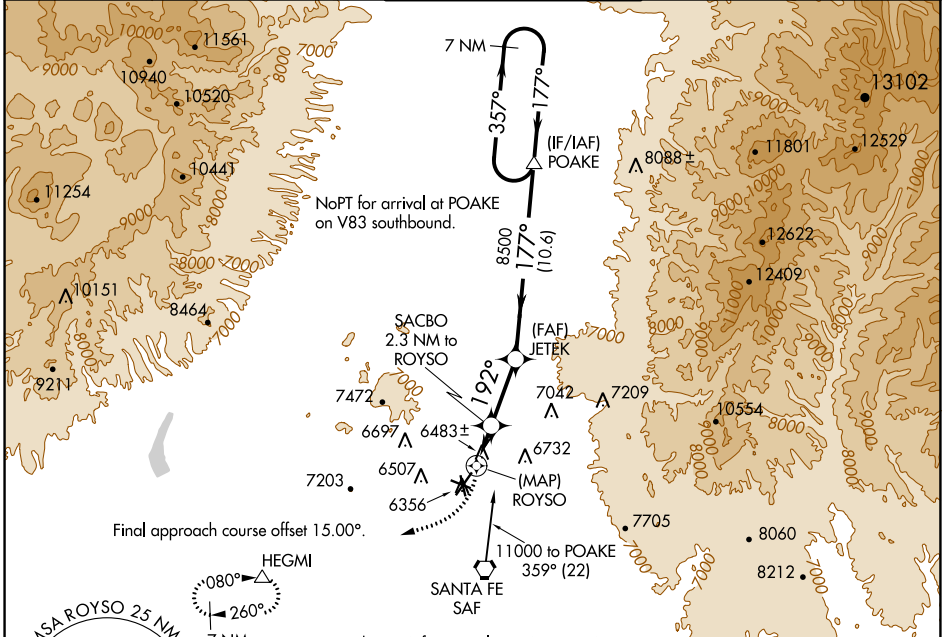
APP CRS	Rwy Idg	<b>8366</b>
<b>192°</b>	TDZE	<b>6349</b>
	Apt Elev	<b>6349</b>

# RNAV (GPS) RWY 20

SANTA FE RGNL (SAF)

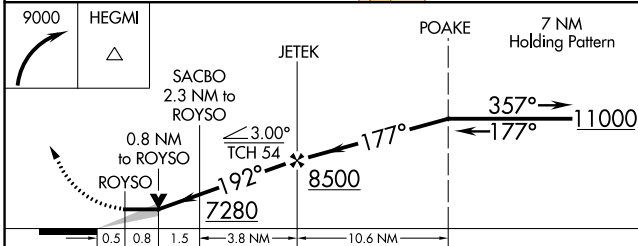
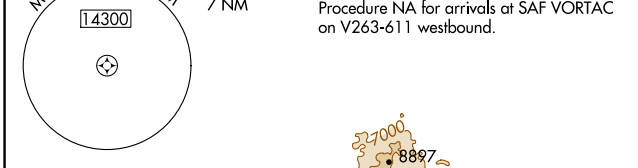
	DME/DME RNP-0.3 NA.	MISSED APPROACH: Climbing right turn to 9000 direct HEGMI and hold.		
--	---------------------	---	--	--

ATIS <b>128.55</b>	ALBUQUERQUE CENTER <b>132.8 346.35</b>	SANTA FE TOWER ★ <b>119.5 (CTAF) 239.3</b>	GND CON <b>121.7</b>	UNICOM <b>122.95</b>
-----------------------	---	---	-------------------------	-------------------------

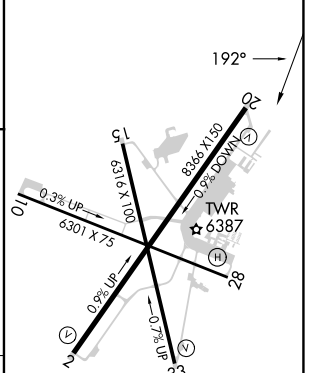


SW-1, 22 FEB 2024 to 21 MAR 2024

SW-1, 22 FEB 2024 to 21 MAR 2024



ELEV 6349	<b>D</b>	TDZE 6349
-----------	----------	-----------



CATEGORY	A	B	C	D
LNVA MDA	6800-1	451 (500-1)	6800-1 $\frac{3}{8}$	451 (500-1 $\frac{3}{8}$ )
<b>C</b> CIRCLING	6800-1 451 (500-1)	6920-1 571 (600-1)	7340-3 991 (1000-3)	7660-3 1311 (1400-3)

REIL Rwy 10, 15, 20 and 33  
MIRL Rwy 2-20 and 15-33 **D**

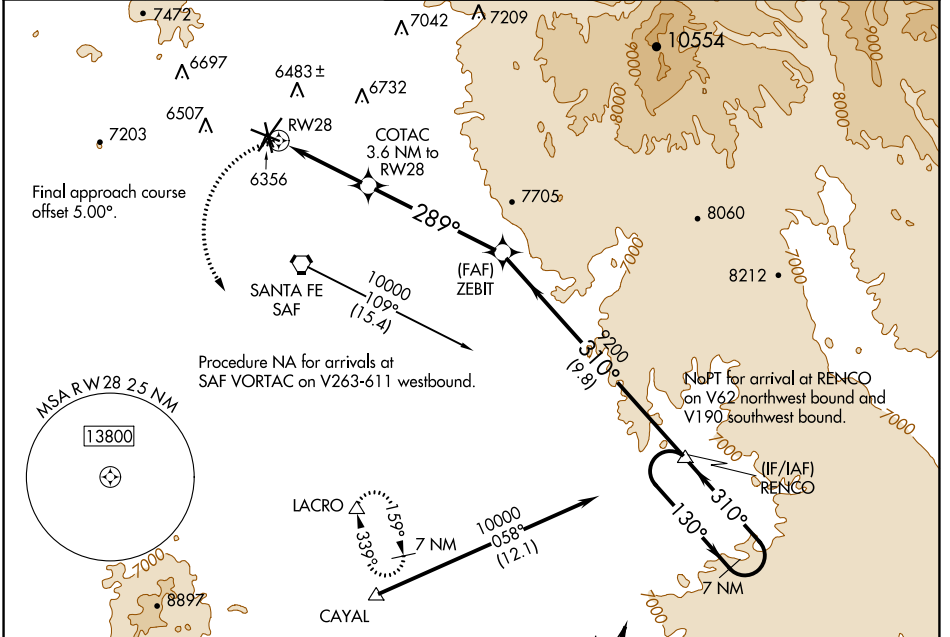
APP CRS	Rwy Idg	<b>6301</b>
<b>289°</b>	TDZE	<b>6307</b>
	Apt Elev	<b>6349</b>

# RNAV (GPS) RWY 28

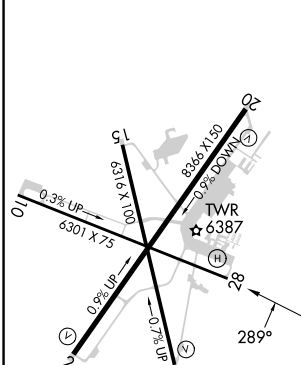
SANTA FE RGNL (SAF)

<b>▽</b> <b>▲</b>	DME/DME RNP-0.3 NA.	MISSED APPROACH: Climbing left turn to 9200 direct LACRO and hold.
----------------------	---------------------	--

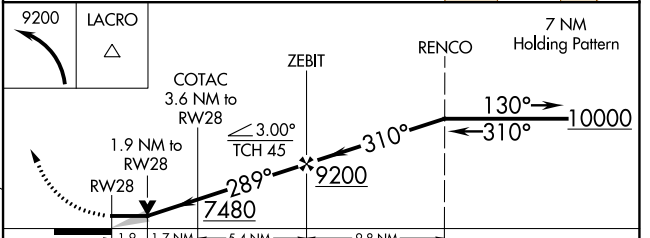
ATIS <b>128.55</b>	ALBUQUERQUE CENTER <b>132.8 346.35</b>	SANTA FE TOWER ★ <b>119.5 (CTAF) 239.3</b>	GND CON <b>121.7</b>	UNICOM <b>122.95</b>
-----------------------	---	---	-------------------------	-------------------------



ELEV 6349	<b>D</b>	TDZE 6307
-----------	----------	-----------



REIL Rws 10, 15, 20 and 33	MIRL Rws 2-20 and 15-33
----------------------------	-------------------------



CATEGORY	A	B	C	D
LNAV MDA	6960-1	653 (700-1)	6960-1½	653 (700-1½)
<b>C</b> CIRCLING	6960-1	611 (700-1)	7340-3 991 (1000-3)	7660-3 1311 (1400-3)

SW-1, 22 FEB 2024 to 21 MAR 2024

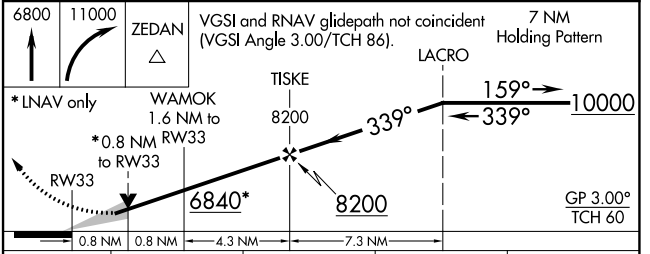
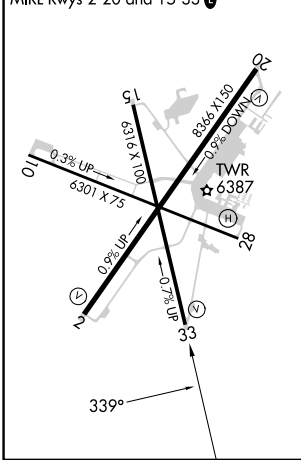
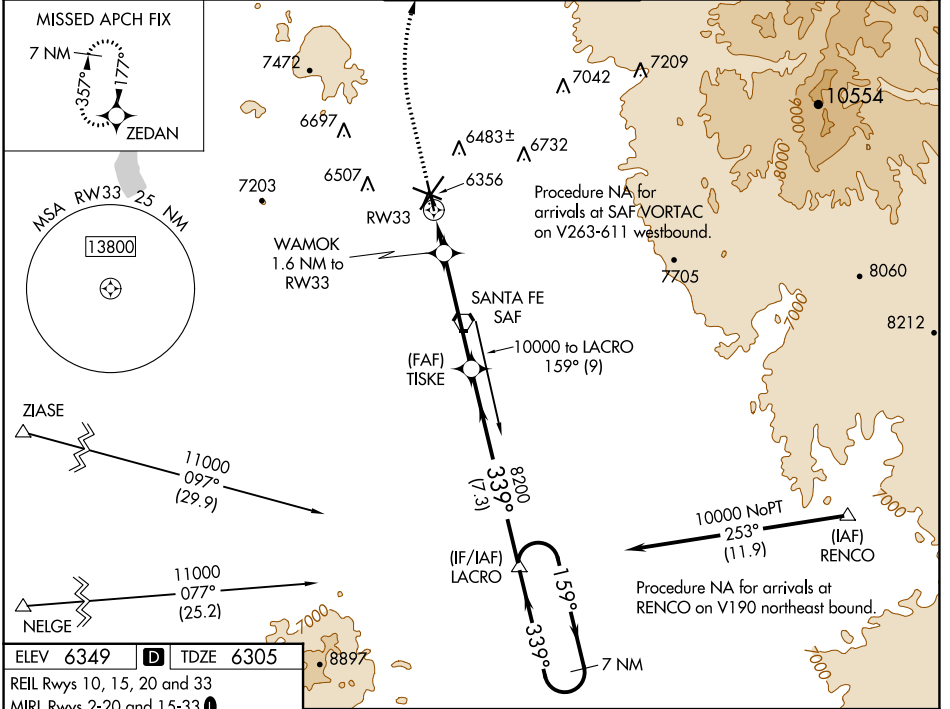
SW-1, 22 FEB 2024 to 21 MAR 2024

WAAS CH <b>69539</b> <b>W33A</b>	APP CRS <b>339°</b>	Rwy Idg TDZE <b>6316</b> 6305 Apt Elev <b>6349</b>
--	------------------------	---

# RNAV (GPS) RWY 33

SANTA FE RGNL (SAF)

<p><b>▽</b> For uncompensated Baro-VNAV systems, LNAV/VNAV NA below -18°C (0°F) or above 43°C (110°F). <b>△</b> DME/DME RNP-0.3 NA.</p>		<p>MISSED APPROACH: Climb to 6800 then climbing right turn to 11000 direct ZEDAN and hold.</p>	
ATIS <b>128.55</b>	ALBUQUERQUE CENTER <b>132.8 346.35</b>	SANTA FE TOWER * <b>119.5 (CTAF) 239.3</b>	GND CON <b>121.7</b>
		UNICOM <b>122.95</b>	



CATEGORY	A	B	C	D
LPV DA		6555-7/8	250 (300-7/8)	
LNAV/VNAV DA		6555-7/8	250 (300-7/8)	
LNAV MDA	6620-1	315 (300-1)	6620-7/8	315 (300-7/8)
<b>C</b> CIRCLING	6800-1 451 (500-1)	6920-1 571 (600-1)	7340-3 991 (1000-3)	7660-3 1311 (1400-3)

SW-1, 22 FEB 2024 to 21 MAR 2024

SW-1, 22 FEB 2024 to 21 MAR 2024

VORTAC SAF <b>110.6</b> Chan 43	APP CRS <b>332°</b>	Rwy Idg TDZE Apt Elev <b>6316</b> <b>6305</b> <b>6349</b>
---------------------------------------	------------------------	--

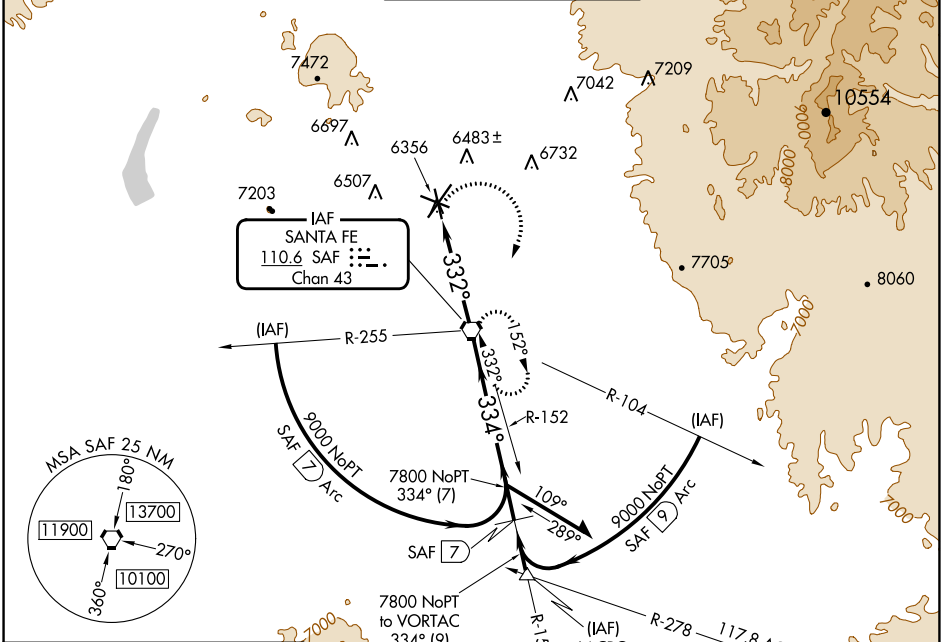
# VOR RWY 33

SANTA FE RGNL (SAF)

**⚠** When Control Tower closed, obtain local altimeter setting on unicom; when not received, use Los Alamos altimeter setting: increase all MDAs 160 feet and S-33 visibility Cat C/D ½ SM.

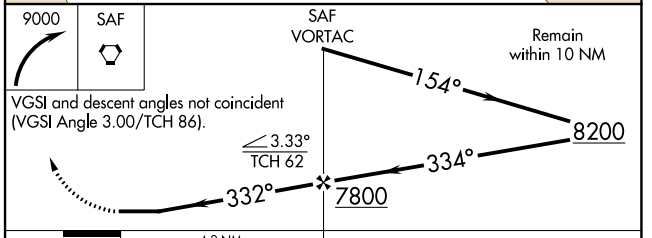
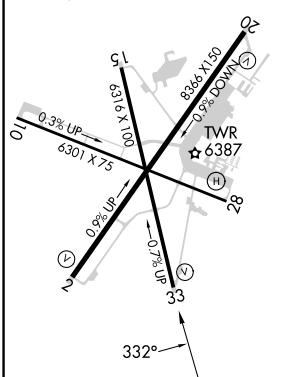
**MISSED APPROACH:** Climbing right turn to 9000 direct SAF VORTAC and hold, continue climb-in-hold to 9000.

ATIS <b>128.55</b>	ALBUQUERQUE CENTER <b>132.8 346.35</b>	SANTA FE TOWER★ <b>119.5 (CTAF) 239.3</b>	GND CON <b>121.7</b>	UNICOM <b>122.95</b>
-----------------------	---	--	-------------------------	-------------------------



ELEV 6349 **D** TDZE 6305

REIL Rwy 10, 15, 20 and 33  
MIRL Rwy 2-20 and 15-33 **Ⓛ**



CATEGORY	A	B	C	D
S-33	6720-1	415 (400-1)	6720-1¼	415 (400-1¼)
CIRCLING	6840-1 491 (500-1)	6920-1 571 (600-1)	7340-3 991 (1000-3)	7660-3 1311 (1400-3)

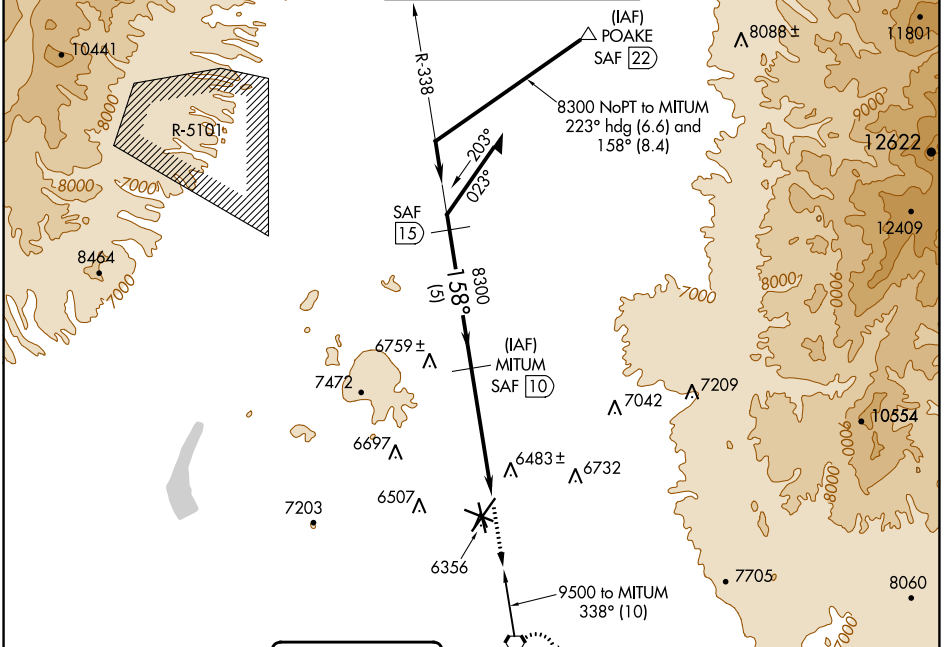
VORTAC SAF <b>110.6</b> Chan 43	APP CRS <b>158°</b>	Rwy Idg TDZE Apt Elev <b>N/A</b> <b>N/A</b> <b>6349</b>
---------------------------------------	------------------------	--

# VOR/DME-A SANTA FE RGNL (SAF)

**⚠** When control tower closed, obtain local altimeter setting on UNICOM; when not received, use Los Alamos altimeter setting: increase all MDAs 160 feet.

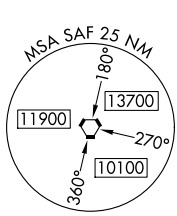
**⚠** MISSED APPROACH: Climb to 9000 direct SAF VORTAC and hold, continue climb-in-hold to 9000.

ATIS <b>128.55</b>	ALBUQUERQUE CENTER <b>132.8 346.35</b>	SANTA FE TOWER ★ <b>119.5 (CTAF) 239.3</b>	GND CON <b>121.7</b>	UNICOM <b>122.95</b>
-----------------------	---	---	-------------------------	-------------------------

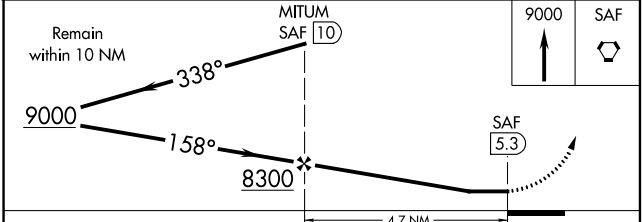
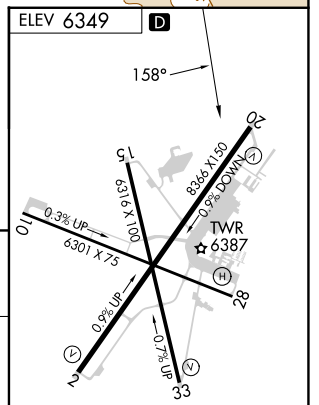


SW-1, 22 FEB 2024 to 21 MAR 2024

SW-1, 22 FEB 2024 to 21 MAR 2024



SANTA FE  
110.6 SAF  
Chan 43



CATEGORY	A	B	C	D	REIL Rwy 10, 15, 20 and 33 MIRL Rwy 2-20 and 15-33
CIRCLING	6960-1	611 (700-1)	7340-3 991 (1000-3)	7660-3 1311 (1400-3)	