

**TOP ALTITUDE:
ASSIGNED BY ATC**

AEROZ TWO DEPARTURE (RNAV)
(AEROZ2.AEROZ) 22ARR21

(AEROZ2.AEROZ) 21112
AEROZ TWO DEPARTURE (RNAV) AL-6111

ASOS
119.375
UNICOM (CTAF)
122.725
AUSTIN DEP CON
119.0 370.85

SAN ANGELO
SJT

TAKEOFF MINIMUMS
Rwys 15, 33: Standard.

NOTE: RADAR required.
NOTE: DME/DME/IRU or GPS required.
NOTE: RNAV 1.

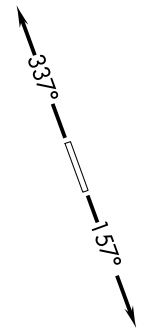


FL180
293°
(91)

AEROZ

293°
(33)

AMUSE
5000



NOTE: Chart not to scale.

DEPARTURE ROUTE DESCRIPTION

TAKEOFF RUNWAY 15: Climb on heading 157° or as assigned by ATC for vectors to cross AMUSE at or above 5000, thence....

TAKEOFF RUNWAY 33: Climb on heading 337° or as assigned by ATC for vectors to cross AMUSE at or above 5000, thence....

... on track 293° to AEROZ, then on SAN ANGELO TRANSITION. Maintain altitude assigned by ATC. Expect filed altitude 10 minutes after departure.

SAN ANGELO TRANSITION (AEROZ2.SJT)

LAGO VISTA, TEXAS
LAGO VISTA TX - RUSTY ALLEN (R.Y.W)

LAGO VISTA TX - RUSTY ALLEN (R.Y.W)
LAGO VISTA, TEXAS

(BNDIA3.BNDIA) 21112

AL-6111 (FAA)

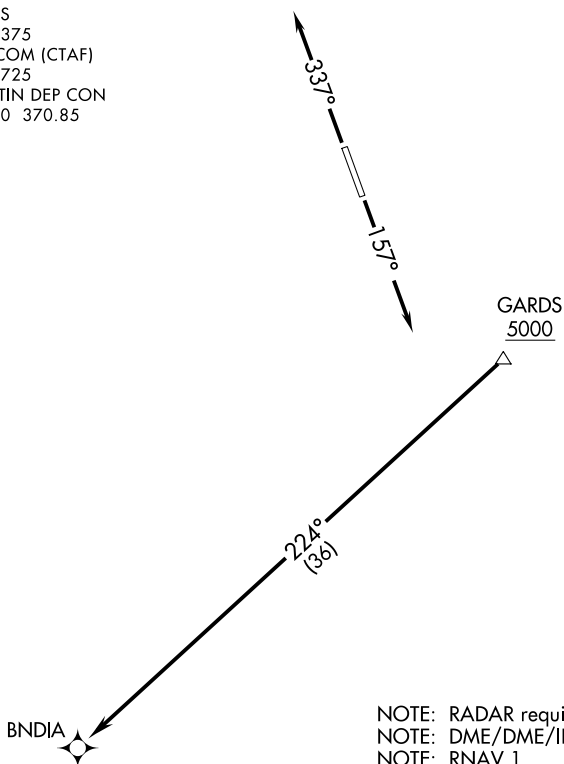
LAGO VISTA TX - RUSTY ALLEN (RYW)

BNDIA THREE DEPARTURE (RNAV)

LAGO VISTA, TEXAS

ASOS
119.375
UNICOM (CTAF)
122.725
AUSTIN DEP CON
119.0 370.85

**TOP ALTITUDE:
ASSIGNED BY ATC**



NOTE: RADAR required.
NOTE: DME/DME/IRU or GPS required.
NOTE: RNAV 1.

TAKEOFF MINIMUMS:
Rwys 15, 33: Standard.

NOTE: Chart not to scale.

DEPARTURE ROUTE DESCRIPTION

TAKEOFF RUNWAY 15: Climb on heading 157° or as assigned by ATC for vectors to cross GARDS at or above 5000, thence....

TAKEOFF RUNWAY 33: Climb on heading 337° or as assigned by ATC for vectors to cross GARDS at or above 5000, thence....

....on track 224° to BNDIA. Maintain altitude assigned by ATC. Expect filed altitude 10 minutes after departure.

BNDIA THREE DEPARTURE (RNAV)

(BNDIA3.BNDIA) 22APR21

LAGO VISTA, TEXAS

LAGO VISTA TX - RUSTY ALLEN (RYW)

SC-3, 07 OCT 2021 to 04 NOV 2021

SC-3, 07 OCT 2021 to 04 NOV 2021

(ELOEL3.ELOEL) 21112

LAGO VISTA TX - RUSTY ALLEN (RYW)

ELOEL THREE DEPARTURE (RNAV) AL-6111 (FAA)

LAGO VISTA, TEXAS

**TOP ALTITUDE:
ASSIGNED BY ATC**

ASOS
119.375
UNICOM (CTAF)
122.725
AUSTIN DEP CON
119.0 370.85

ABILENE
ABI

FL180
307°
(120)

TAKEOFF MINIMUMS:
Rwys 15, 33: Standard.

NOTE: RADAR required.
NOTE: DME/DME/IRU or GPS required.
NOTE: RNAV 1.

FORSS

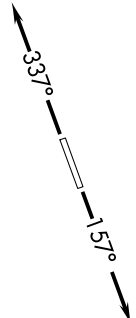
KLNGR

10500
*2700
338°
(21)
10500
*2700
329°
(18)

ELOEL

WLMRT
5000

338°
(10)



NOTE: Chart not to scale.



DEPARTURE ROUTE DESCRIPTION

TAKEOFF RUNWAY 15: Climb on heading 157° or as assigned by ATC for vectors to cross WLMRT at or above 5000, thence....

TAKEOFF RUNWAY 33: Climb on heading 337° or as assigned by ATC for vectors to cross WLMRT at or above 5000, thence....

... on track 338° to ELOEL. then on transition. Maintain altitude assigned by ATC. Expect filed altitude 10 minutes after departure.

ABILENE TRANSITION (ELOEL3.ABI)

FORSS TRANSITION (ELOEL3.FORSS)

KLNGR TRANSITION (ELOEL3.KLNGR)

ELOEL THREE DEPARTURE (RNAV)

(ELOEL3.ELOEL) 22APR21

LAGO VISTA, TEXAS

LAGO VISTA TX - RUSTY ALLEN (RYW)

SC-3, 07 OCT 2021 to 04 NOV 2021

SC-3, 07 OCT 2021 to 04 NOV 2021

ILEXY THREE DEPARTURE (RNAV)
(ILEXY3.ILEXY) 22APR21

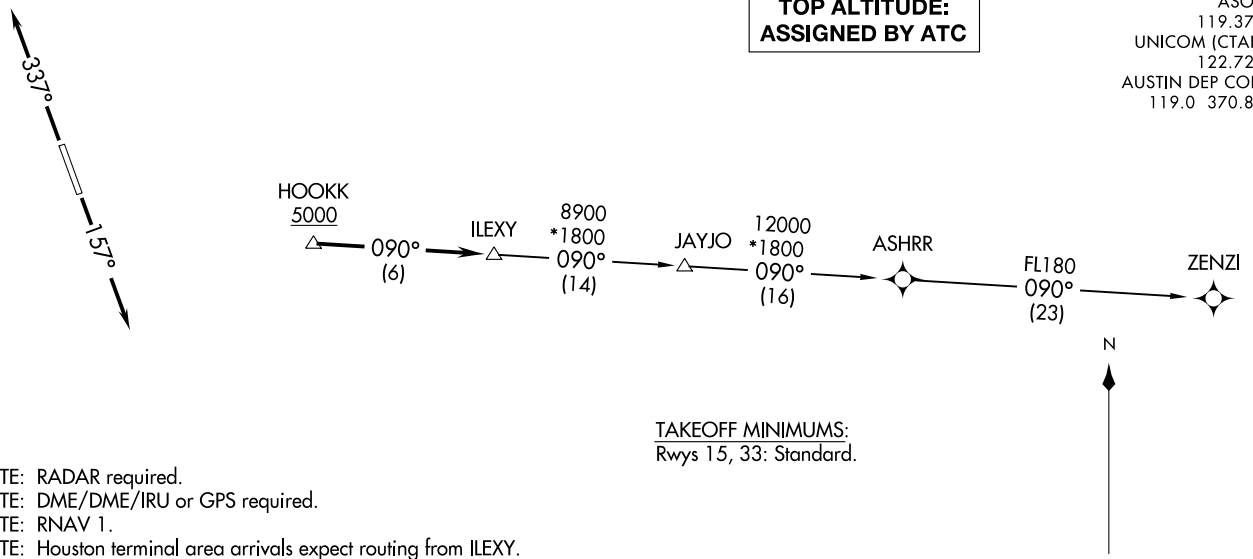
LAGO VISTA TX - RUSTY ALLEN (RYW)
LAGO VISTA, TEXAS

(ILEXY3.ILEXY) 21112
ILEXY THREE DEPARTURE (RNAV) AL-6111 (FAA)

LAGO VISTA TX - RUSTY ALLEN (RYW)
LAGO VISTA, TEXAS

ASOS
119.375
UNICOM (CTAF)
122.725
AUSTIN DEP CON
119.0 370.85

**TOP ALTITUDE:
ASSIGNED BY ATC**



TAKEOFF MINIMUMS:
Rwys 15, 33: Standard.

- NOTE: RADAR required.
- NOTE: DME/DME/IRU or GPS required.
- NOTE: RNAV 1.
- NOTE: Houston terminal area arrivals expect routing from ILEXY.
- NOTE: JAYJO transition to join V306 only.

NOTE: Chart not to scale.

DEPARTURE ROUTE DESCRIPTION

TAKEOFF RUNWAY 15: Climb on heading 157° or as assigned by ATC for vectors to cross HOOKK at or above 5000, thence. . . .

TAKEOFF RUNWAY 33: Climb on heading 337° or as assigned by ATC for vectors to cross HOOKK at or above 5000, thence. . . .

. . . . on track 090° to ILEXY, then on transition. Maintain altitude assigned by ATC. Expect filed altitude 10 minutes after departure.

JAYJO TRANSITION (ILEXY3.JAYJO)
ZENZI TRANSITION (ILEXY3.ZENZI)

(MUCKY3.MUCKY) 21112

AL-6111 (FAA)

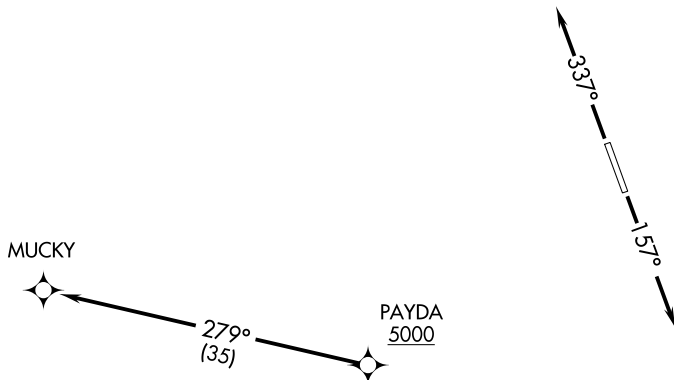
LAGO VISTA TX - RUSTY ALLEN (RYW)

MUCKY THREE DEPARTURE (RNAV)

LAGO VISTA, TEXAS

ASOS
119.375
UNICOM (CTAF)
122.725
AUSTIN DEP CON
119.0 370.85

**TOP ALTITUDE:
ASSIGNED BY ATC**



TAKEOFF MINIMUMS:
Rwys 15, 33: Standard.

NOTE: RADAR required.
NOTE: DME/DME/IRU or GPS required.
NOTE: RNAV 1.

NOTE: Chart not to scale.



DEPARTURE ROUTE DESCRIPTION

TAKEOFF RUNWAY 15: Climb on heading 157° or as assigned by ATC for vectors to cross PAYDA at or above 5000, thence....

TAKEOFF RUNWAY 33: Climb on heading 337° or as assigned by ATC for vectors to cross PAYDA at or above 5000, thence....

... on track 279° to MUCKY. Maintain altitude assigned by ATC.
Expect filed altitude 10 minutes after departure.

MUCKY THREE DEPARTURE (RNAV)

(MUCKY3.MUCKY) 22APR21

LAGO VISTA, TEXAS

LAGO VISTA TX - RUSTY ALLEN (RYW)

SC-3, 07 OCT 2021 to 04 NOV 2021

SC-3, 07 OCT 2021 to 04 NOV 2021

(SAYBR3.SAYBR) 21112

SAYBR THREE DEPARTURE (RNAV)

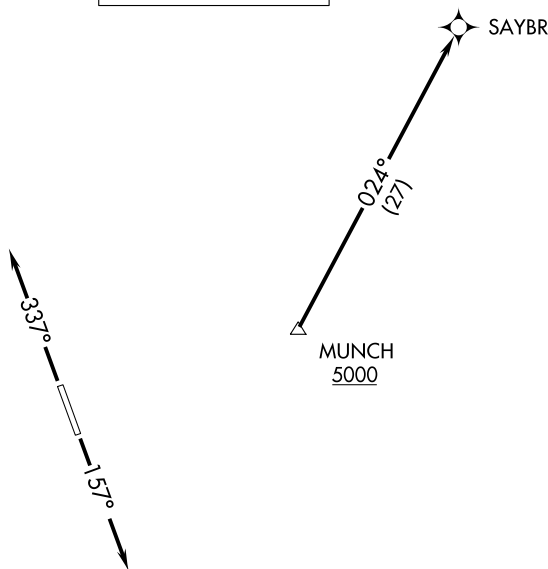
AL-6111 (FAA)

LAGO VISTA TX - RUSTY ALLEN (RYW)

LAGO VISTA, TEXAS

ASOS
119.375
UNICOM (CTAF)
122.725
AUSTIN DEP CON
119.0 370.85

**TOP ALTITUDE:
ASSIGNED BY ATC**



NOTE: RADAR required.
NOTE: DME/DME/IRU or GPS required.
NOTE: RNAV 1.
NOTE: For DFW terminal area arrivals at FL230 or below only.

TAKEOFF MINIMUMS

Rwys 15, 33: Standard.

NOTE: Chart not to scale.



DEPARTURE ROUTE DESCRIPTION

TAKEOFF RUNWAY 15: Climb on heading 157° or as assigned by ATC for vectors to cross MUNCH at or above 5000, thence....

TAKEOFF RUNWAY 33: Climb on heading 337° or as assigned by ATC for vectors to cross MUNCH at or above 5000, thence....

... on track 024° to SAYBR. Maintain altitude assigned by ATC.
Expect filed altitude 10 minutes after departure.

SAYBR THREE DEPARTURE (RNAV)

(SAYBR3.SAYBR) 22APR21

LAGO VISTA, TEXAS

LAGO VISTA TX - RUSTY ALLEN (RYW)

SC-3, 07 OCT 2021 to 04 NOV 2021

SC-3, 07 OCT 2021 to 04 NOV 2021