

TIKEE FOUR ARRIVAL (RNAV)
(TIKEE.TIKEE4) 20APR23

POTOMAC APP CON
120.45 306.925
DCA D-ATIS
132.65
ADW D-ATIS
133.675 251.05
*DAA ATIS
128.175

RNAV 1 - DME/DME/IRU or GPS.
RADAR required.

ARRIVAL ROUTE DESCRIPTION

BBONE TRANSITION (BBONE.TIKEE4):
KESSEL TRANSITION (ESL.TIKEE4):
SEALZ TRANSITION (SEALZ.TIKEE4):

All aircraft types landing HEF/NYG/RMN/HWY/CJR/EZF:
From TIKEE on track 090° to JETIS, then on heading 090° or as assigned by ATC. Expect RADAR vectors to final approach course.

Props and Turboprop aircraft landing DAA/W00/VKX/ADW/
2W5/DCA: From TIKEE on track 122° to GILFF, then on
track 090° to HIGPO, then on heading 090° or as assigned by ATC.
Expect RADAR vectors to final approach course.

NOTE: Procedure available to all type aircraft landing the following airports: CJR, HWY, HEF, RMN, EZF, NYG.

NOTE: Props or Turboprop aircraft only landing the following airports: DAA, 2W5, VKX, W00, DCA, ADW.

KESSEL
ESL
FL190



7000
*6300
178°
(37)

BBONE

7000
*6300
107°
(12)

LURAY 7000
*6300
(7)

6300
087°
(9)

(3)
5200
090°

JETIS

090°

7000
*6300
086°
(42)

SEALZ

LLBEE
9000

5200
122°
(41)

WARRENTON/
FAUQUIER

CULPEPER
RGNL

STAFFORD
RGNL

3000
*1500
090°
(3)

GILFF

090°

HIGPO

090°

SHANNON

MANASSAS RGNL/
HARRY P DAVIS FLD

DAVISON AAF

MARYLAND

QUANTICO MCAF
(TURNER FLD)

RONALD REAGAN
WASHINGTON
NTL

JOINT BASE
ANDREWS

POTOMAC
AIRFIELD

FREEWAY

N



NOTE: Chart not to scale

WASHINGTON, DC

WASHINGTON, DC

TIKEE FOUR ARRIVAL (RNAV)
(TIKEE.TIKEE4) 23110

AL-443 (FAA)

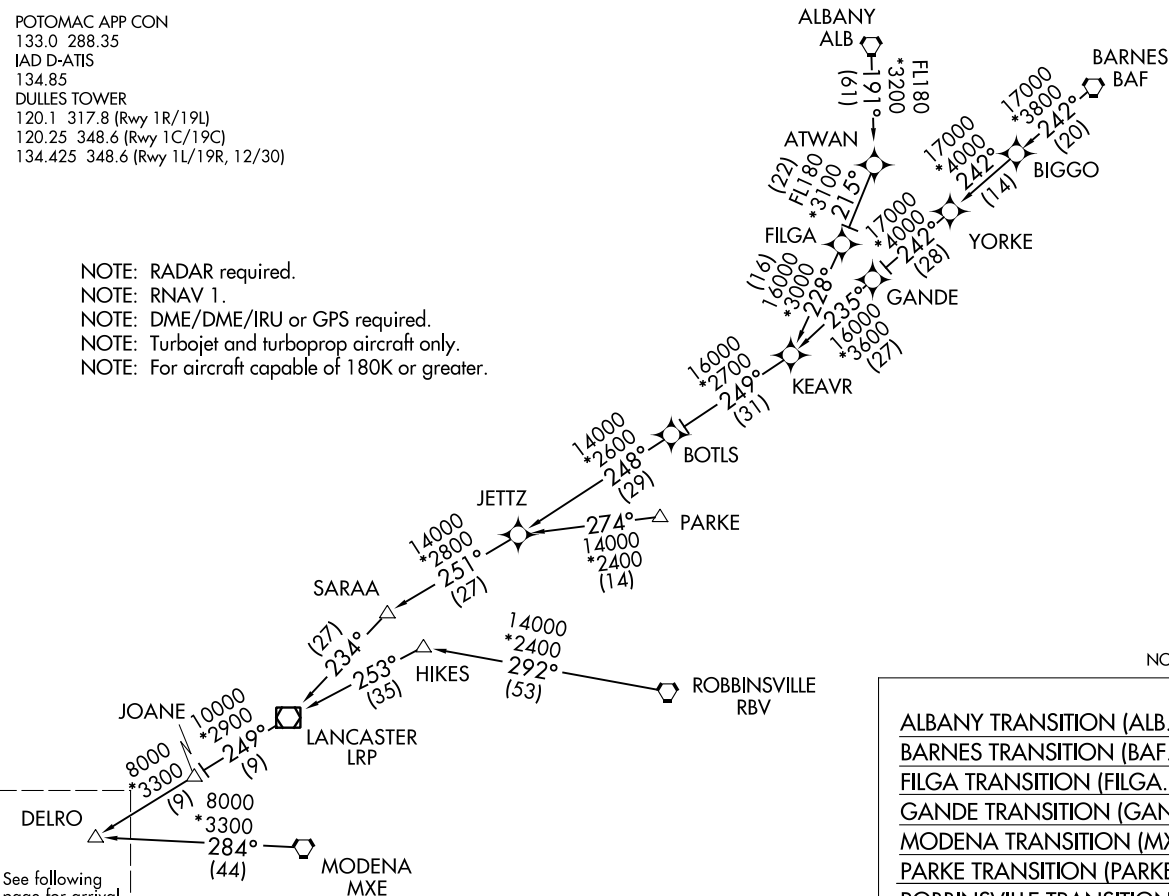
(DELRO.HYPER8) 31DEC20

HYPER EIGHT ARRIVAL (RNAV) Transition Routes

WASHINGTON, DC

POTOMAC APP CON
 133.0 288.35
 IAD D-ATIS
 134.85
 DULLES TOWER
 120.1 317.8 (Rwy 1R/19L)
 120.25 348.6 (Rwy 1C/19C)
 134.425 348.6 (Rwy 1L/19R, 12/30)

NOTE: RADAR required.
 NOTE: RNAV 1.
 NOTE: DME/DME/IRU or GPS required.
 NOTE: Turbojet and turboprop aircraft only.
 NOTE: For aircraft capable of 180K or greater.



See following page for arrival routes.

(CONTINUED ON FOLLOWING PAGE)

- ALBANY TRANSITION (ALB.HYPER8)
- BARNES TRANSITION (BAF.HYPER8)
- FILGA TRANSITION (FILGA.HYPER8)
- GANDE TRANSITION (GANDE.HYPER8)
- MODENA TRANSITION (MXE.HYPER8)
- PARKE TRANSITION (PARKE.HYPER8)
- ROBBINSVILLE TRANSITION (RBV.HYPER8)

NOTE: Chart not to scale.

(DELRO.HYPER8) 24025

HYPER EIGHT ARRIVAL (RNAV) Transition Routes

WASHINGTON, DC

AL-5100 (FAA)

HYPER EIGHT ARRIVAL (RNAV) Arrival Routes

WASHINGTON, DC

POTOMAC APP CON

133.0 288.35

IAD D-ATIS

134.85

DULLES TOWER

120.1 317.8 (Rwy 1R/19L)

120.25 348.6 (Rwy 1C/19C)

134.425 348.6 (Rwy 1L/19R, 12/30)

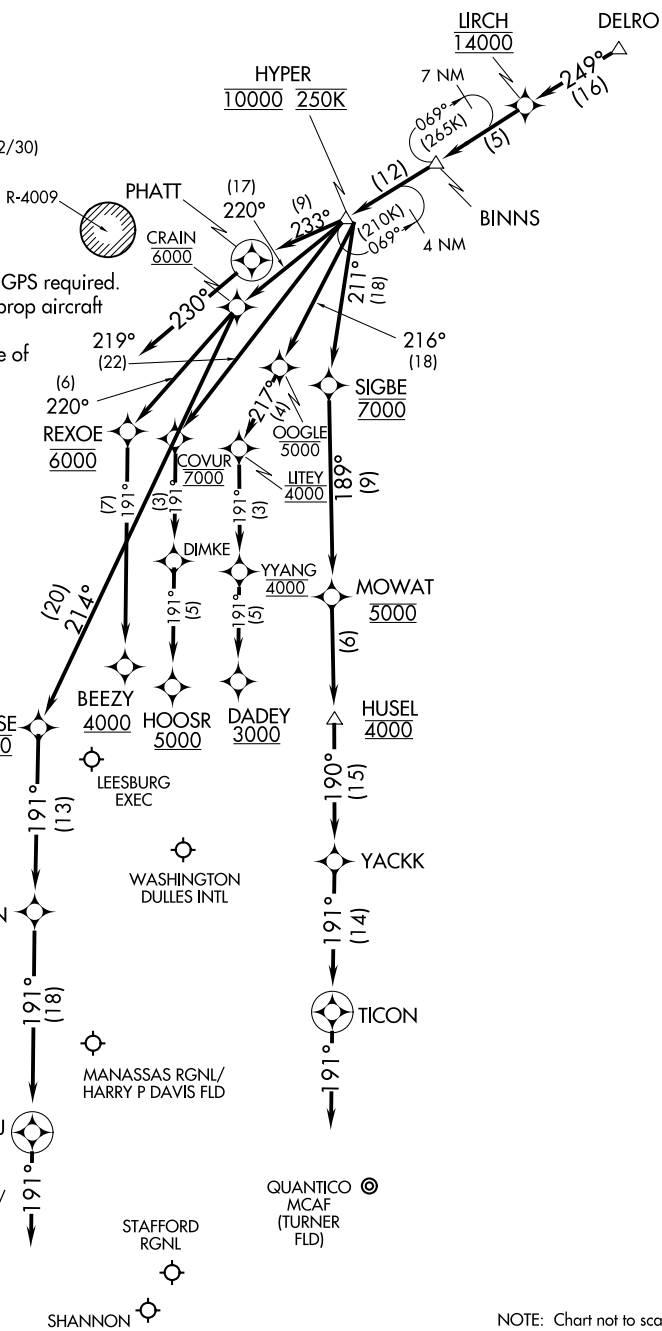
NOTE: RADAR required.

NOTE: RNAV 1.

NOTE: DME/DME/IRU or GPS required.

NOTE: Turbojet and turboprop aircraft only.

NOTE: For aircraft capable of 180K or greater.



NE-3, 22 FEB 2024 to 21 MAR 2024

NE-3, 22 FEB 2024 to 21 MAR 2024

NOTE: Chart not to scale.

HYPER EIGHT ARRIVAL (RNAV) Arrival Routes

WASHINGTON, DC

ARRIVAL ROUTE DESCRIPTION

IAD: From DELRO on track 249° to cross LIRCH at 14000, then on track 249° to BINNS, then on track 249° to cross HYPER at 10000 and at 250K.

Landing IAD Rwy 1C/R: From HYPER on track 211° to cross SIGBE at 7000, then on track 189° to cross MOWAT at 5000, then on track 189° to cross HUSEL at 4000, then on track 190° to YACKK, then on track 191° to TICON, then on track 191°. Expect RADAR vectors to final approach course.

Landing IAD Rwy 1L: From HYPER on track 220° to cross CRAIN at 6000, then on track 214° to cross KUKSE at 5000, then on track 191° to ELISN, then on track 191° to MIKEJ, then on track 191°. Expect RADAR vectors to final approach course.

Landing IAD Rwy 19C: From HYPER on track 219° to cross COVUR at 7000, then on track 191° to DIMKE, then on track 191° to cross HOOSR at or above 5000. Expect ILS or LOC Rwy 19C approach.

Landing IAD Rwy 19L: From HYPER on track 216° to cross OOGLE at or below 5000, then on track 217° to cross LITEY at 4000, then on track 191° to cross YYANG at 4000, then on track 191° to cross DADEY at or above 3000. Expect ILS or LOC Rwy 19L approach.

Landing IAD Rwy 19R: From HYPER on track 220° to cross CRAIN at 6000, then on track 220° to cross REXOE at 6000, then on track 191° to cross BEEZY at or above 4000. Expect ILS or LOC Rwy 19R approach.

Landing NYG/CJR/EZF/RMN/HWY/HEF: From DELRO on track 249° to cross LIRCH at 14000, then on track 249° to BINNS, then on track 249° to cross HYPER at 10000 and at 250K, then on track 211° to cross SIGBE at 7000, then on track 189° to cross MOWAT at 5000, then on track 189° to cross HUSEL at 4000, then on track 190° to YACKK, then on track 191° to TICON, then on track 191°. Expect RADAR vectors to final approach course.

Landing MRB/JYO/FRR/OKV: From DELRO on track 249° to cross LIRCH at 14000, then on track 249° to BINNS, then on track 249° to cross HYPER at 10000 and at 250K, then on track 233° to PHATT. Then on heading 230° or as assigned by ATC. Expect RADAR vectors to final approach course.

NE-3, 22 FEB 2024 to 21 MAR 2024

NE-3, 22 FEB 2024 to 21 MAR 2024