

APP CRS	Rwy Idg	5001
108°	TDZE	790
	Apt Elev	790

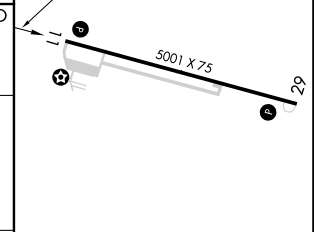
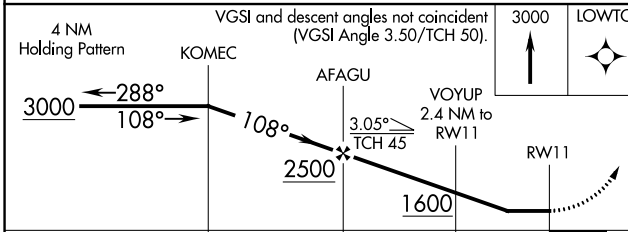
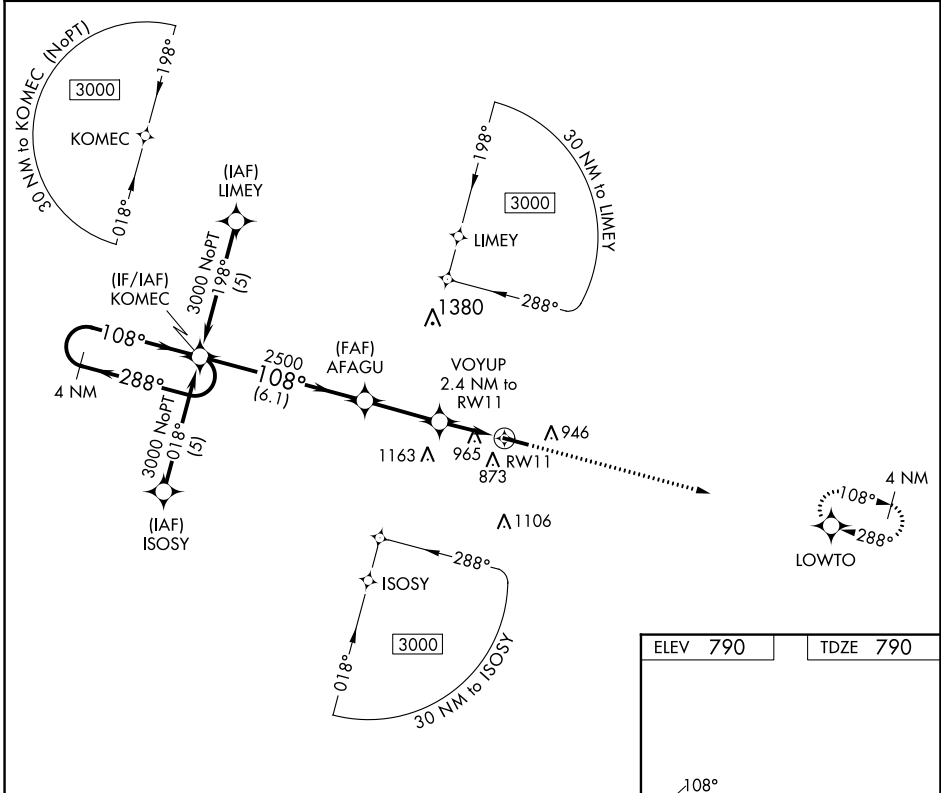
RNAV (GPS) RWY 11

FULTON COUNTY (R/C/R)

⚠ DME/DME RNP-0.3 NA. Visibility reduction by helicopters NA. When local altimeter setting not received, use Goshen altimeter setting: increase all MDA 100 feet and visibility LNAV Cats C and D and Circling Cats C and D ¼ SM.

⚠ MISSED APPROACH: Climb to 3000 direct LOWTO and hold.

AWOS-3 118.775	SOUTH BEND APP CON ★ 132.05 257.8	UNICOM 122.7 (CTAF) 0
--------------------------	---	---------------------------------



CATEGORY	A	B	C	D
LNAV MDA	1220-1	430 (500-1)	1220-1¼ 430 (500-1¼)	1220-1½ 430 (500-1½)
CIRCLING	1280-1 490 (500-1)	1360-1 570 (600-1)	1480-2 690 (700-2)	1620-2¾ 830 (900-2¾)

ELEV 790 | TDZE 790

REIL Rwy 11 and 29 **0**
MIRL Rwy 11-29 **0**

EC-2, 22 FEB 2024 to 21 MAR 2024

EC-2, 22 FEB 2024 to 21 MAR 2024

WAAS CH 48809 W29A	APP CRS 288°	Rwy Idg TDZE Apt Elev	5001 790 790
--	------------------------	-----------------------------	---

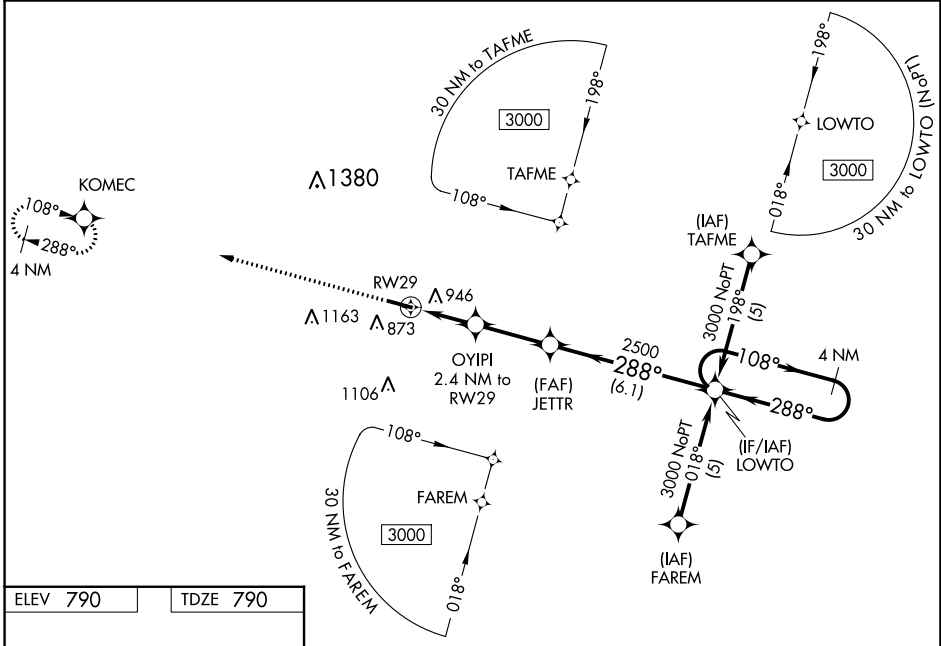
RNAV (GPS) RWY 29

FULTON COUNTY (R.C.R.)

⚠ DME/DME RNP-0.3 NA. Visibility reduction by helicopters NA. For uncompensated Baro-VNAV systems, LNAV/VNAV NA below -16°C (4°F) or above 47°C (116°F).
⚠ When local altimeter setting not received, use Goshen altimeter setting: increase LPV DA to 1208 feet and visibility all Cats ½ SM; increase LNAV/VNAV DA to 1325 and visibility all Cats ½ SM; increase all MDA 100 feet and visibility LNAV Cats C and D and Circling Cats C and D ¼ SM. Baro-VNAV and VDP NA when using Goshen altimeter setting.

MISSED APPROACH: Climb to 3000 direct KOMEC and hold.

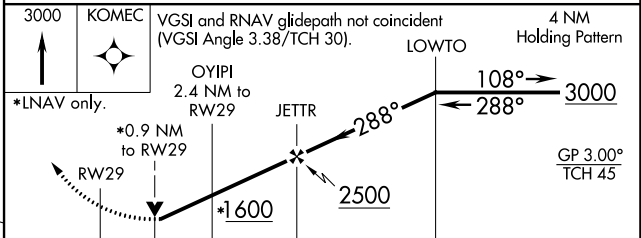
AWOS-3 118.775	SOUTH BEND APP CON* 132.05 257.8	UNICOM 122.7 (CTAF) 0
--------------------------	--	---------------------------------



EC-2, 22 FEB 2024 to 21 MAR 2024

EC-2, 22 FEB 2024 to 21 MAR 2024

ELEV 790	TDZE 790
----------	----------



CATEGORY	A	B	C	D
LPV DA		1127-1¼	337 (400- 1¼)	
LNAV/VNAV DA		1244-1½	454 (500- 1½)	
LNAV MDA	1200-1	410 (500-1)	1200-1¼	410 (500-1¼)
CIRCLING	1280-1 490 (500-1)	1360-1 570 (600-1)	1480-2 690 (700-2)	1620-2¾ 830 (900-2¾)

REIL Rwy 11 and 29
MIRL Rwy 11-29