

WAAS CH 97430 W13A	APP CRS 129°	Rwy Idg TDZE Apt Elev	3700 80 80
--	------------------------	-----------------------------	---------------------------------------

RNAV (GPS) RWY 13

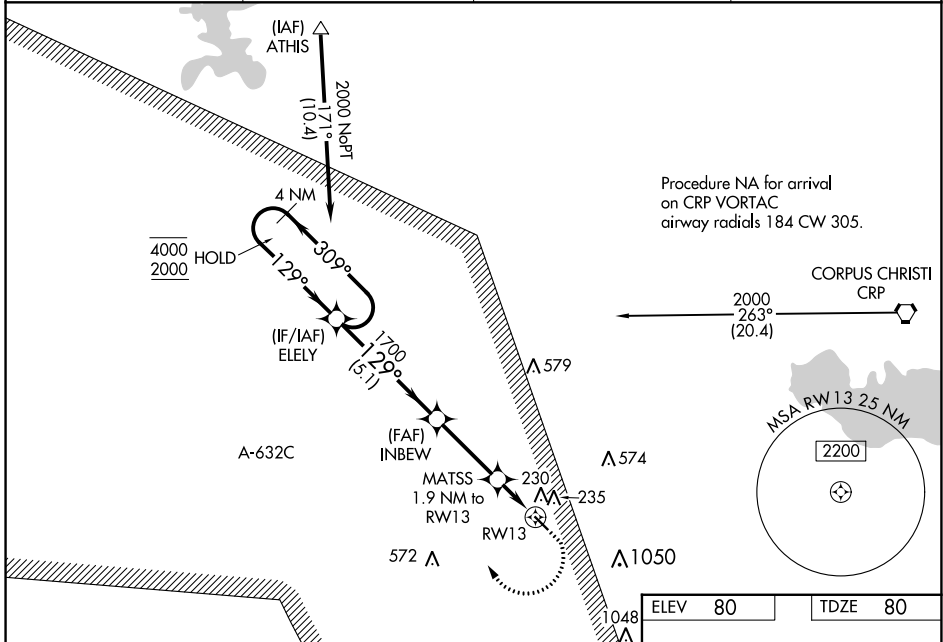
NUECES COUNTY (R.B.O)

RNP APCH.

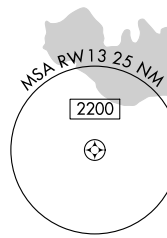
⚠ Circling NA northeast of Rwy 13-31. Procedure NA at night. Baro-VNAV and VDP NA when using Corpus Christi Intl altimeter setting. For uncompensated Baro-VNAV systems, LNAV/VNAV NA below -15°C or above 54°C. When local altimeter setting not received, use Corpus Christi Intl altimeter setting and increase LPV DA to 358 feet, LNAV/VNAV DA to 400 feet and all MDA 40 feet.

MISSED APPROACH: Climb to 540 then climbing right turn to 2000 direct ELELY and hold.

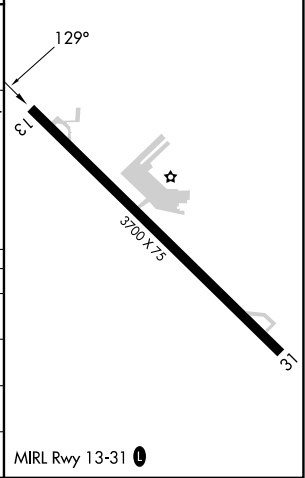
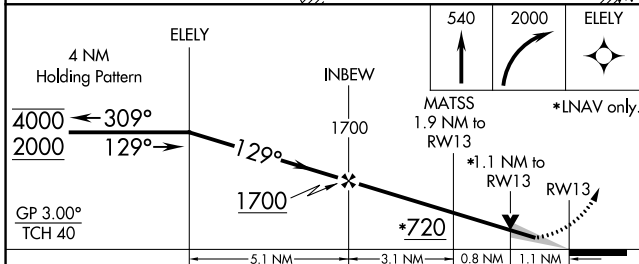
AWOS-3 118.175	KINGSVILLE APP CON * 119.9 290.45	CTAF 122.9	122.8
--------------------------	---	----------------------	--------------



Procedure N/A for arrival on CRP VORTAC airway radials 184 CW 305.



ELEV 80	TDZE 80
---------	---------



CATEGORY	A	B	C	D
LPV DA	330-1	250 (300-1)		NA
LNAV/VNAV DA	372-1	292 (300-1)		NA
LNAV MDA	480-1	400 (400-1)		NA
CIRCLING	540-1 460 (500-1)	640-1 560 (600-1)		NA

SC-3, 22 FEB 2024 to 21 MAR 2024

SC-3, 22 FEB 2024 to 21 MAR 2024

WAAS CH 50340 W31A	APP CRS 309°	Rwy Idg 3700 TDZE 79 Apt Elev 80
--	------------------------	---

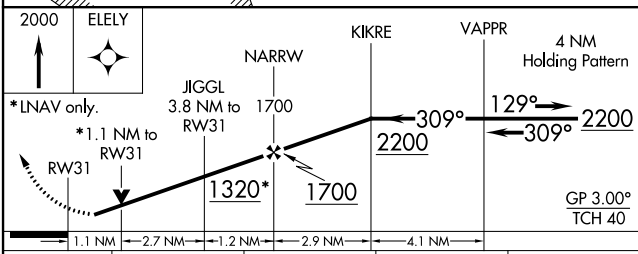
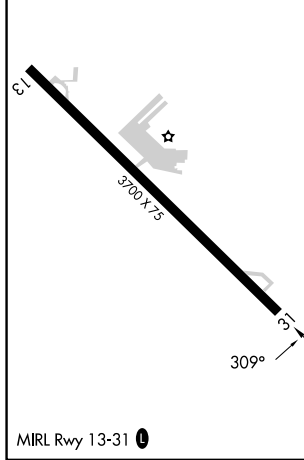
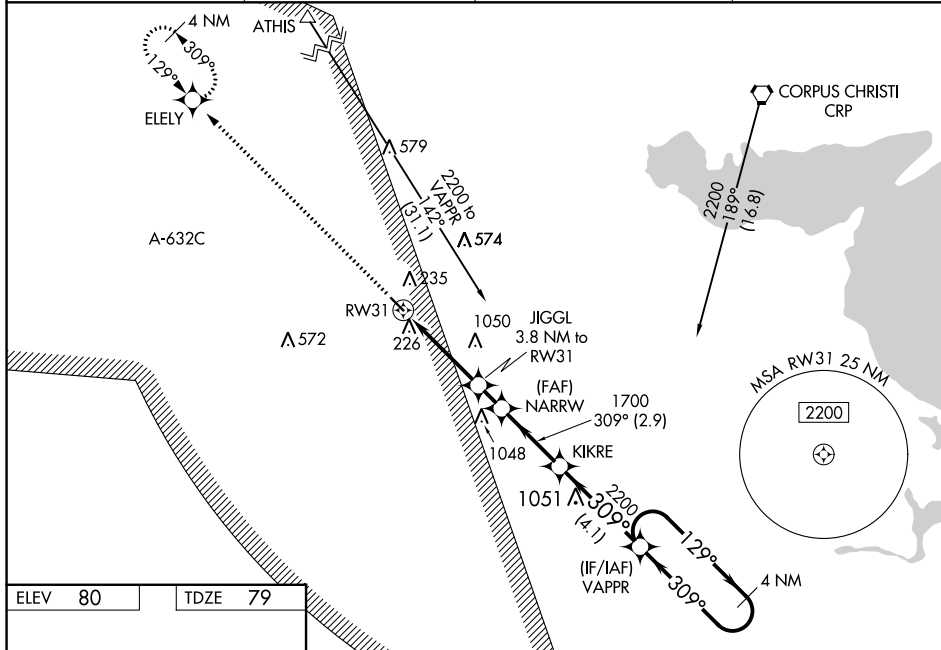
RNAV (GPS) RWY 31

NUECES COUNTY (R.B.O)

⚠ For uncompensated Baro-VNAV systems, LNAV/VNAV NA below -15°C (5°F) or above 54°C (130°F). Circling NA northeast of Rwy 13-31. Baro-VNAV and VDP NA when using Corpus Christi Intl altimeter setting. Rwy 31 helicopter visibility reduction below 3/4 SM NA. DME/DME RNP-0.3 NA. Procedure NA at night. When local altimeter not received, use Corpus Christi Intl altimeter setting and increase LPV DA to 357 feet, LNAV/VNAV DA to 398 feet and all MDA 40 feet, increase LNAV/VNAV all Cats visibility 1/8 SM.

MISSED APPROACH: Climb to 2000 direct ELEY and hold.

AWOS-3 118.175	KINGSVILLE APP CON * 119.9 290.45	CTAF 122.9	122.8 0
--------------------------	---	----------------------	-----------------------



CATEGORY	A	B	C	D
LPV DA	329-1	250 (300-1)		NA
LNAV/VNAV DA	370-1	291 (300-1)		NA
LNAV MDA	480-1	401 (400-1)		NA
C CIRCLING	540-1	460 (500-1)		NA

SC-3, 22 FEB 2024 to 21 MAR 2024

SC-3, 22 FEB 2024 to 21 MAR 2024

VORTAC CRP 115.5 Chan 102	APP CRS 051°	Rwy Idg TDZE Apt Elev N/A N/A 80
---	------------------------	--

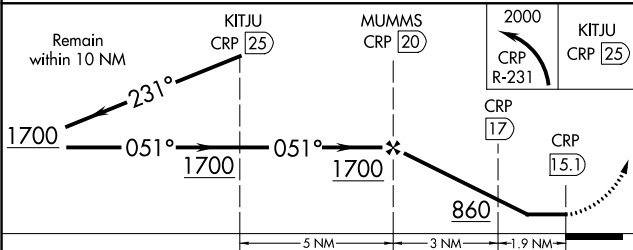
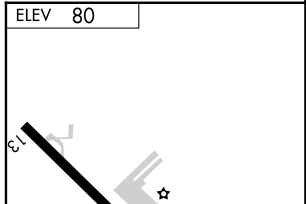
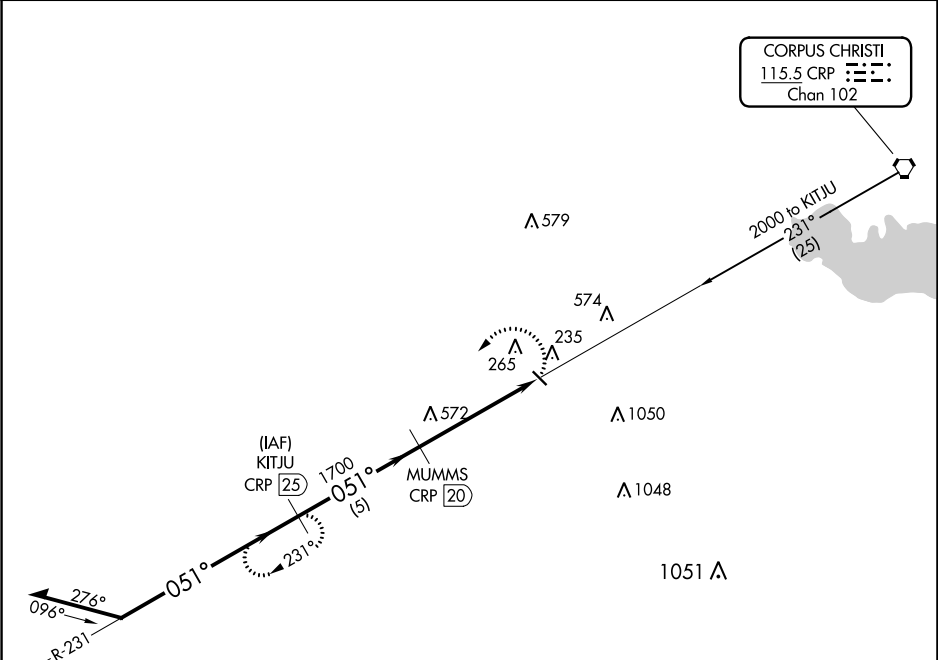
VOR/DME-A

NUECES COUNTY (RBO)

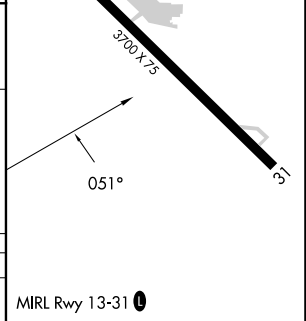
NA When local altimeter setting not received, use Corpus Christi Intl altimeter setting. Circling not authorized northeast of Rwy 13-31.

MISSED APPROACH: Climbing left turn to 2000 via CRP R-231 to KITJU/CRP 25 DME and hold.

AWOS-3 118.175	KINGSVILLE APP CON ★ 119.9 290.45	CTAF 122.9	122.8 0
--------------------------	---	----------------------	-----------------------



CATEGORY	A	B	C	D
CIRCLING	660-1	580 (600-1)	NA	NA



SC-3, 22 FEB 2024 to 21 MAR 2024

SC-3, 22 FEB 2024 to 21 MAR 2024