

WAAS CH <b>63230</b> <b>W17A</b>	APP CRS <b>173°</b>	Rwy Idg TDZE Apt Elev	<b>5501</b> <b>592</b> <b>592</b>
--	------------------------	-----------------------------	---

# RNAV (GPS) RWY 17

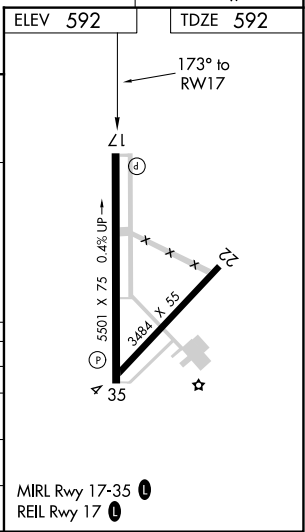
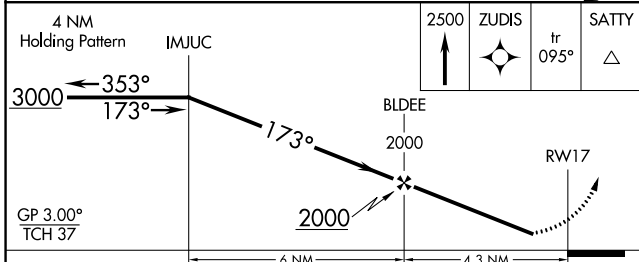
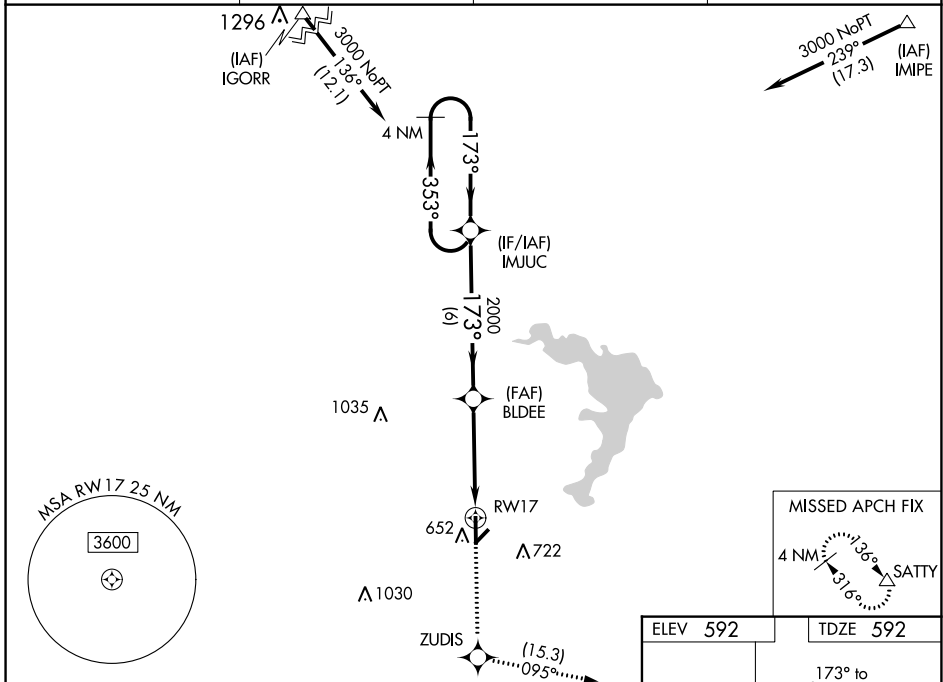
MC GREGOR EXECUTIVE (PWG)

**⚠** Circling to Rwy 4 NA at night. Baro-VNAV NA when using Waco Rgnl altimeter setting. For uncompensated Baro-VNAV systems, LNAV/VNAV NA below -20°C (-4°F) or above 54°C (130°F). DME/DME RNP-0.3 NA. Helicopter visibility reduction below 3/4 SM NA. When local altimeter setting not received, use Waco Rgnl altimeter setting and increase all DA 31 feet and MDA 40 feet, and increase LPV all Cats visibility and LNAV/VNAV all Cats visibility 1/8 mile.

**ASR**

**MISSED APPROACH:** Climb to 2500 direct ZUDIS and on track 095° to SATTY and hold.

AWOS-3PT <b>135.525</b>	WACO APP CON ★ <b>127.65 352.0</b>	GCO <b>121.725</b>	UNICOM <b>122.8 (CTAF) 0</b>
----------------------------	---------------------------------------	-----------------------	---------------------------------



CATEGORY	A	B	C	D
LPV DA	842-3/4	250 (300-3/4)		NA
LNAV/VNAV DA	842-3/4	250 (300-3/4)		NA
LNAV MDA	1040-1	448 (500-1)	1040-1 3/8 448 (500-1 3/8)	NA
CIRCLING	1040-1 448 (500-1)	1060-1 468 (500-1)	1060-1 1/2 468 (500-1 1/2)	NA

SC-3, 28 JAN 2021 to 25 FEB 2021

SC-3, 28 JAN 2021 to 25 FEB 2021

WAAS CH <b>87130</b> <b>W35A</b>	APP CRS <b>353°</b>	Rwy Idg TDZE Apt Elev	<b>5501</b> <b>580</b> <b>592</b>
--	------------------------	-----------------------------	---

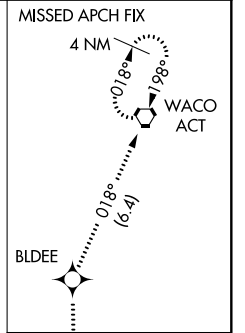
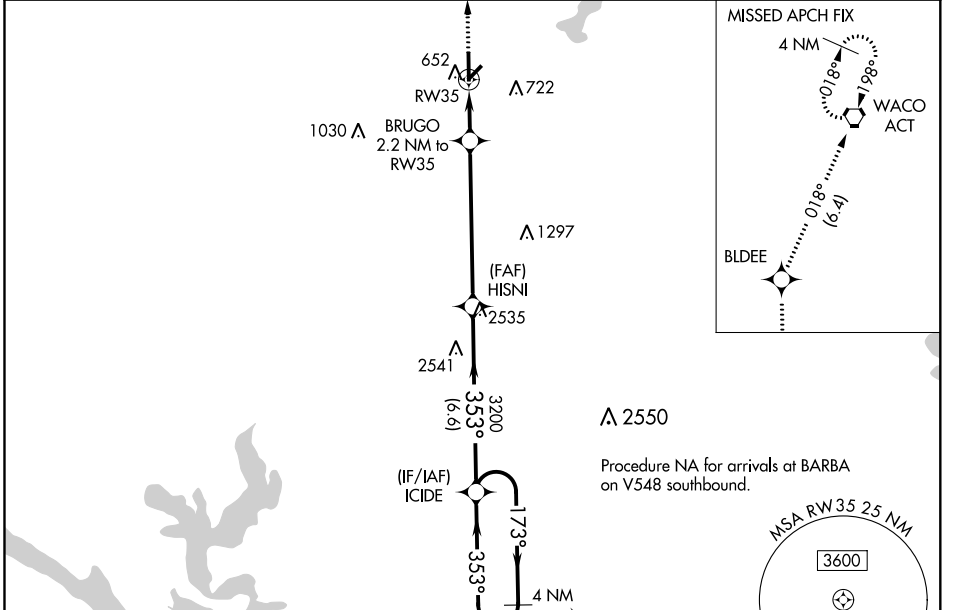
# RNAV (GPS) RWY 35

MC GREGOR EXECUTIVE (PWG)

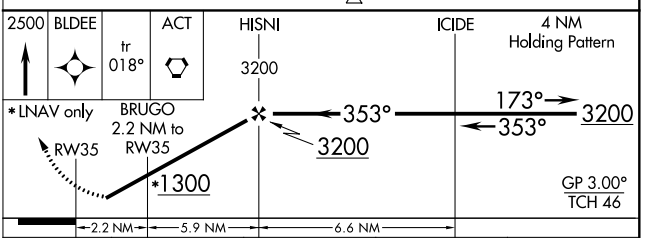
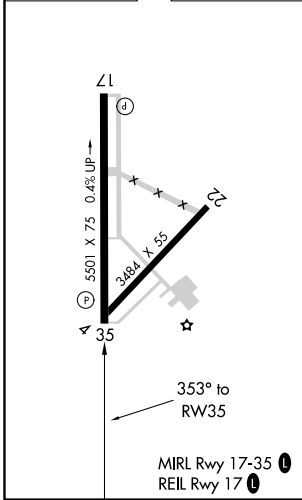
**ASR** Circling to Rwy 4 NA at night. Baro-VNAV NA when using Waco Rgnl altimeter setting. For uncompensated Baro-VNAV systems, LNAV/VNAV NA below -16°C (4°F) or above 54°C (130°F). When local altimeter setting not received, use Waco Rgnl altimeter setting increase all DA 31 feet and MDA 40 feet. DME/DME RNP-0.3 NA. Helicopter visibility reduction below ¾ SM NA.

**MISSED APPROACH:** Climb to 2500 direct BLDEE and on track 018° to ACT VORTAC and hold.

AWOS-3PT <b>135,525</b>	WACO APP CON * <b>127.65 352.0</b>	GCO <b>121.725</b>	UNICOM <b>122.8 (CTAF)</b>
----------------------------	---------------------------------------	-----------------------	-------------------------------



ELEV 592	TDZE 580
----------	----------



CATEGORY	A	B	C	D
LPV DA	830-¾	250 (300-¾)		NA
LNAV/VNAV DA	830-¾	250 (300-¾)		NA
LNAV MDA	960-1	380 (400-1)	960-1½ 380 (400-1½)	NA
CIRCLING	1020-1 428 (500-1)	1060-1 468 (500-1)	1060-1½ 468 (500-1½)	NA

SC-3, 28 JAN 2021 to 25 FEB 2021

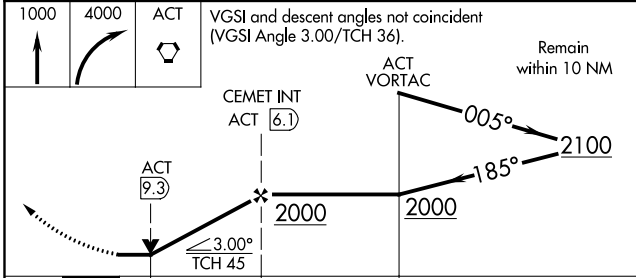
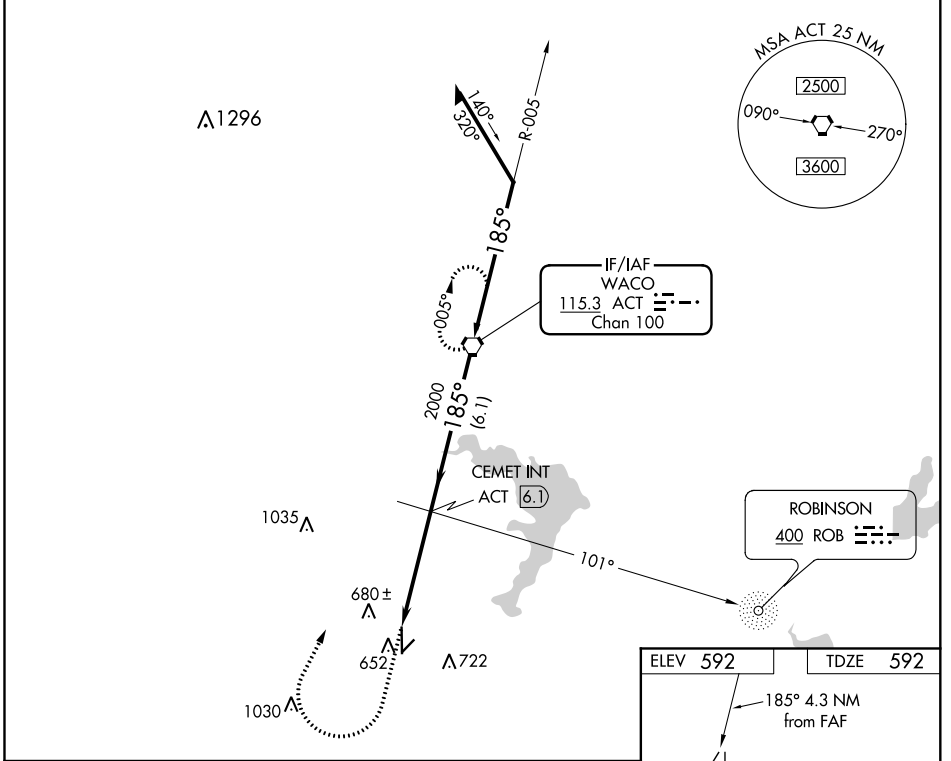
SC-3, 28 JAN 2021 to 25 FEB 2021

VORTAC ACT	APP CRS	Rwy Idg	5501
115.3	185°	TDZE	592
Chan 100		Apt Elev	592

# VOR RWY 17

MC GREGOR EXECUTIVE (PWG)

ADF or DME required.		MISSED APPROACH: Climb to 1000 then climbing right turn to 4000 direct ACT VORTAC and hold, continue climb-in-hold to 4000.	
ASR			
AWOS-3PT	WACO APP CON *	GCO	UNICOM
135.525	127.65 352.0	121.725	122.8 (CTAF) 0



ELEV 592	TDZE 592
REIL Rwy 17 0 MIRL Rwy 17-35 0 FAF to MAP 4.3 NM	
Knots	60 90 120 150 180
Min:Sec	4:18 2:52 2:09 1:43 1:26

SC-3, 28 JAN 2021 to 25 FEB 2021

SC-3, 28 JAN 2021 to 25 FEB 2021