

LOC/DME I-PVU 110.3 Chan 40	APP CRS 134°	Rwy Idg 8599 TDZE 4497 Apt Elev 4497
---	------------------------	---

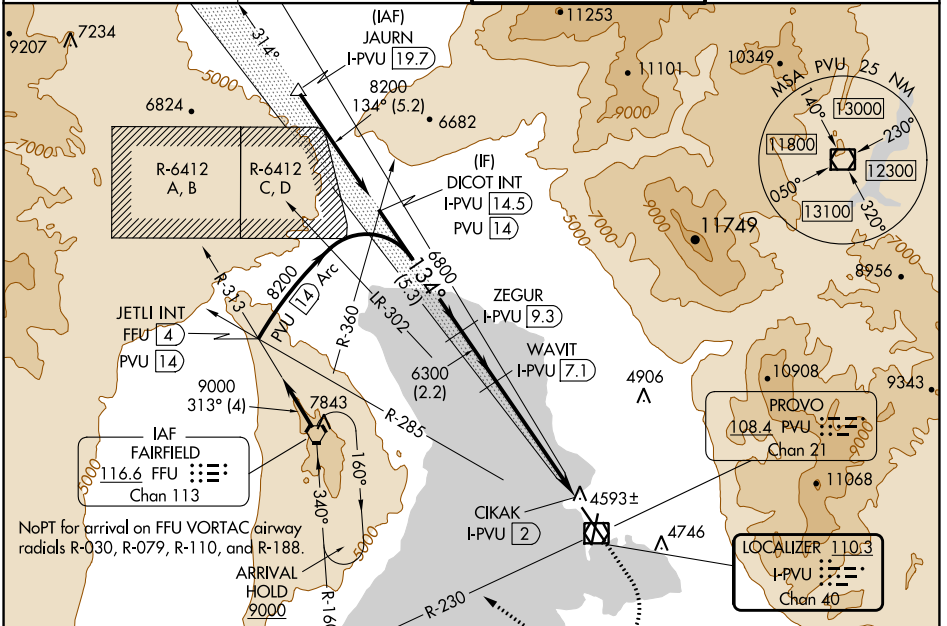
ILS or LOC RWY 13

PROVO MUNI (PVU)

DME required.

⚠ Circling NA east of Rwy 18-36. Circling Rwy 18, 36 NA at night.
⚠ Rwy 13 helicopter visibility reduction below 3/4 SM NA. When local altimeter setting not received, procedure NA.

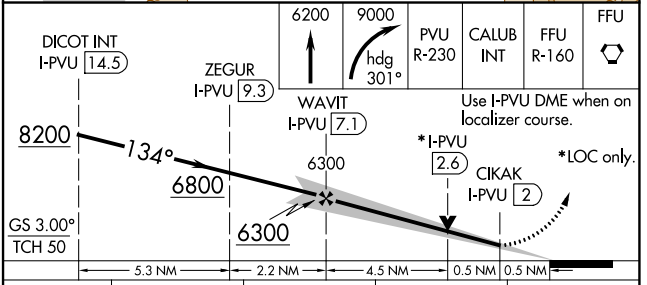
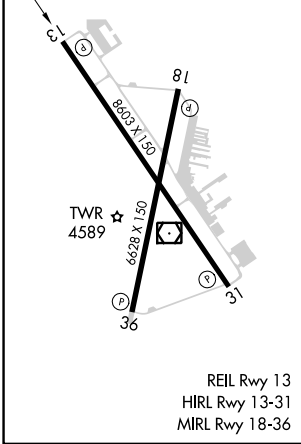
ATIS* 135.175	SALT LAKE CITY APP CON 118.85 233.7	PROVO TOWER* 125.3 (CTAF)	GND CON 119.4
-------------------------	---	-------------------------------------	-------------------------



SW-4, 22 FEB 2024 to 21 MAR 2024

SW-4, 22 FEB 2024 to 21 MAR 2024

ELEV 4497	D	TDZE 4497
-----------	----------	-----------



CATEGORY	A	B	C	D
S-ILS 13	4756-3/4 259 (300-3/4)			
S-LOC 13	4860-1 363 (400-1)			
C CIRCLING	4920-1 423 (500-1)	4980-1 483 (500-1)	5140-1 3/4 643 (700-1 3/4)	5280-2 1/2 783 (800-2 1/2)

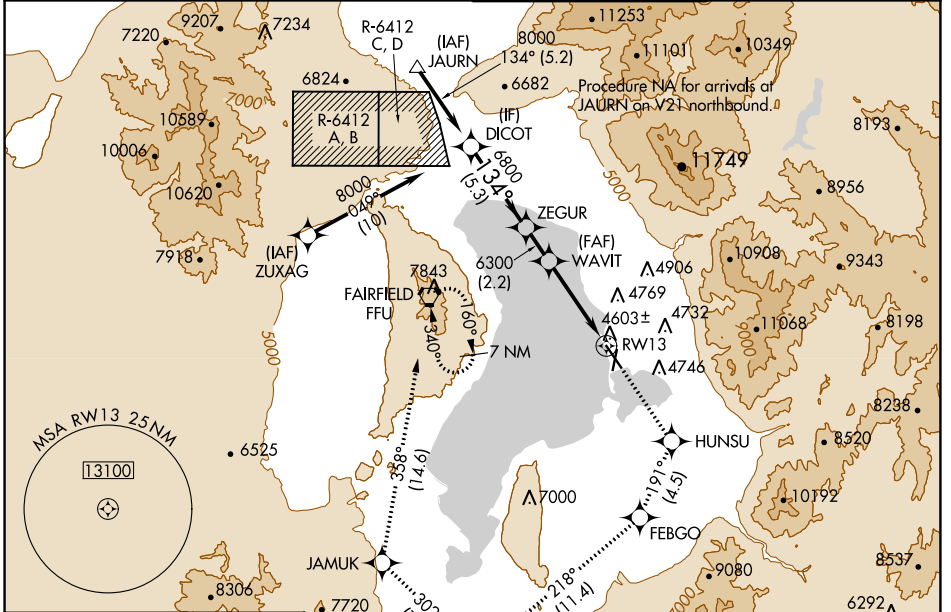
WAAS CH 97307 W13A	APP CRS 134°	Rwy Idg TDZE Apt Elev	8599 4497 4497
--	------------------------	-----------------------------	---

RNAV (GPS) RWY 13

PROVO MUNI (PVU)

RNP APCH - GPS.	MISSED APPROACH: Climb to 9000 direct HUNSU and on track 191° to FEBGO and on track 218° to ZARAK and on track 302° to JAMUK and on track 358° to FFU VORTAC and hold.
<p>⚠ Circling NA east of Rwy 18-36. Circling Rwy 18, 36 NA at night.</p> <p>⚠ Rwy 13 helicopter visibility reduction below 3/4 SM NA. For uncompensated Baro-VNAV systems, LNAV/VNAV NA below -23°C or above 54°C. When local altimeter setting not received, procedure NA.</p>	

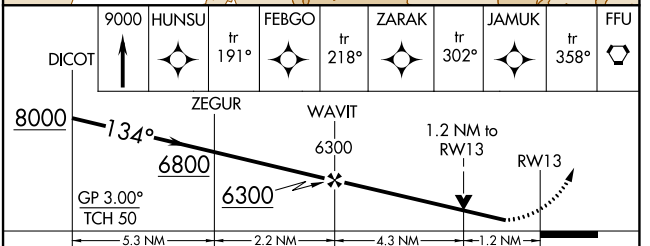
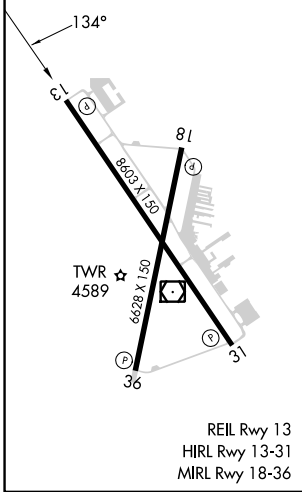
ATIS ★ 135.175	SALT LAKE CITY APP CON 118.85 233.7	PROVO TOWER ★ 125.3 (CTAF)	GND CON 119.4
--------------------------	---	--------------------------------------	-------------------------



SW-4, 22 FEB 2024 to 21 MAR 2024

SW-4, 22 FEB 2024 to 21 MAR 2024

ELEV 4497	D	TDZE 4497
-----------	----------	-----------



CATEGORY	A	B	C	D
LPV DA	4756-3/4 259 (300-3/4)			
LNAV/VNAV DA	4838-1 341 (400-1)			
LNAV MDA	4940-1	443 (500-1)	4940-1 3/8	443 (500-1 3/8)
C CIRCLING	4940-1 443 (500-1)	4980-1 483 (500-1)	5140-1 3/4 643 (700-1 3/4)	5280-2 1/2 783 (800-2 1/2)