

# CLOUD ONE ARRIVAL

AL-545 (FAA)

PALM SPRINGS, CALIFORNIA

SOCAL APP CON  
 126.7 370.95  
 135.275 251.1  
 PSP ATIS  
 124.65  
 TRM ASOS  
 118.325  
 PALM SPRINGS TOWER\*  
 119.7 377.05  
 BERMUDA DUNES UNICOM  
 122.8  
 JACQUELINE COCHRAN UNICOM  
 123.0

GOFFS  
 114.4 GFS  
 Chan 91

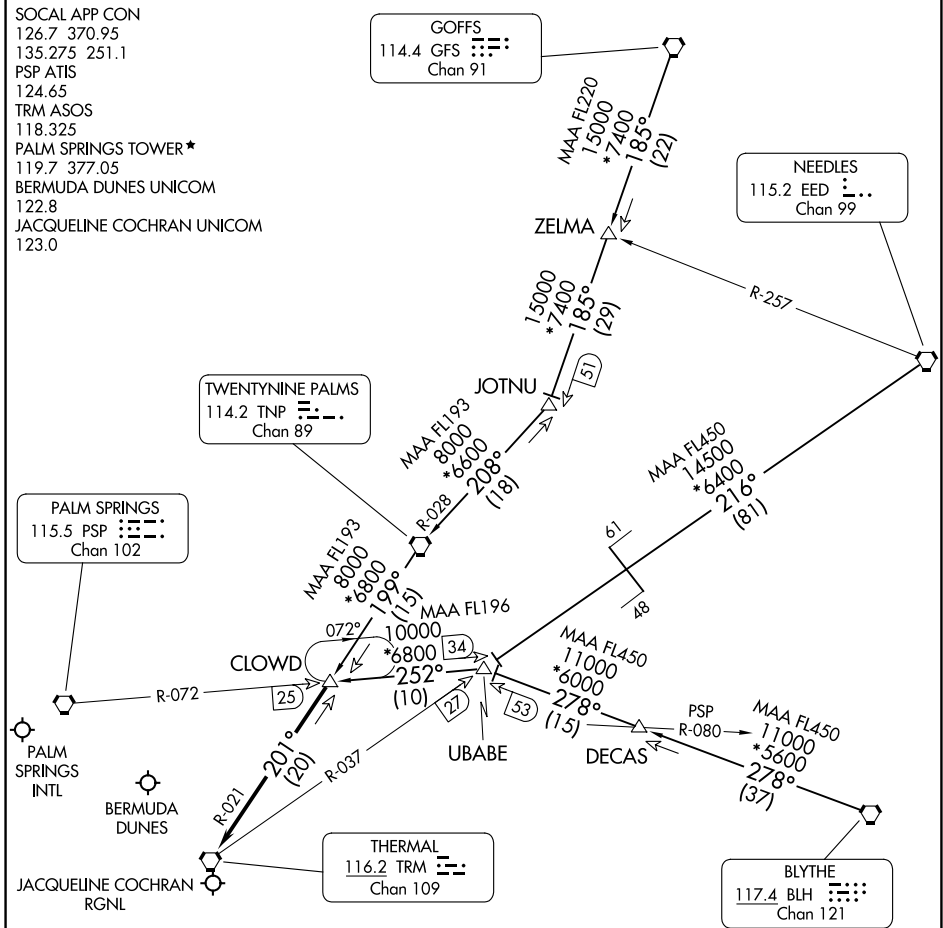
NEEDLES  
 115.2 EED  
 Chan 99

TWENTYNINE PALMS  
 114.2 TNP  
 Chan 89

PALM SPRINGS  
 115.5 PSP  
 Chan 102

THERMAL  
 116.2 TRM  
 Chan 109

BLYTHE  
 117.4 BLH  
 Chan 121



SW-3, 22 FEB 2024 to 21 MAR 2024

SW-3, 22 FEB 2024 to 21 MAR 2024

NOTE: Chart not to scale.

NOTE: DME required.

## ARRIVAL ROUTE DESCRIPTION

**BLYTHE TRANSITION (BLH.CLOUD1):** From over BLH VORTAC on BLH R-278 and PSP R-072 to CLOUD DME. Thence. . .

**DECAS TRANSITION (DECAS.CLOUD1):** From over DECAS INT on BLH R-278 and PSP R-072 to CLOUD DME. Thence. . .

**GOFFS TRANSITION (GFS.CLOUD1):** From over GFS VORTAC on GFS R-185 and TNP R-028 to TNP VORTAC, then on TNP R-199 to CLOUD DME. Thence. . .

**NEEDLES TRANSITION (EED.CLOUD1):** From over EED VORTAC on EED R-216 and TRM R-037 to UBABE DME, then on PSP R-072 to CLOUD DME. Thence. . .

. . . From over CLOUD DME on TRM R-021 to TRM VORTAC. Expect RADAR vectors to final approach course.

# CLOUD ONE ARRIVAL

(CLOUD.CLOUD1) 12MAY05

PALM SPRINGS, CALIFORNIA

# SBONO ONE ARRIVAL

SOCAL APP CON  
 126.7 370.95  
 135.275 251.1  
 PSP ATIS  
 124.65  
 TRM ASOS  
 118.325  
 BERMUDA DUNES UNICOM  
 122.8  
 JACQUELINE COCHRAN UNICOM  
 123.0  
 PALM SPRINGS TOWER\*  
 119.7 377.05

GOFFS  
 114.4 GFS :...:  
 Chan 91

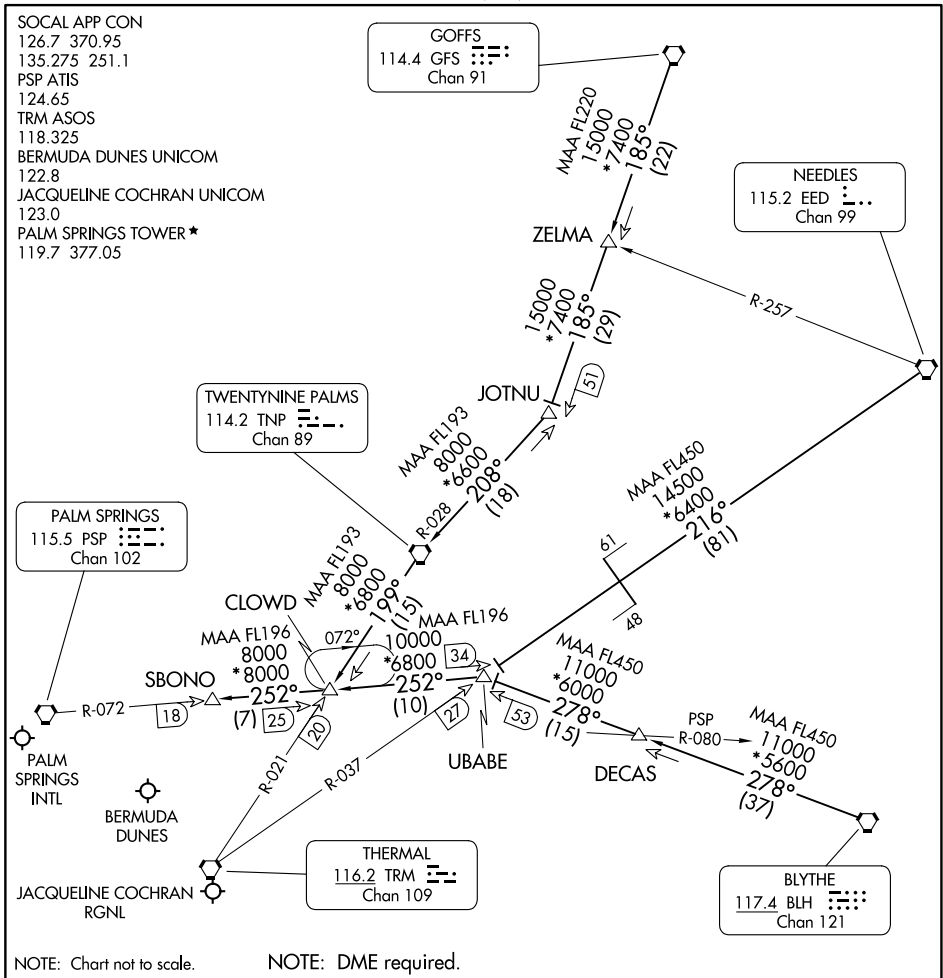
NEEDLES  
 115.2 EED :...:  
 Chan 99

TWENTYNINE PALMS  
 114.2 TNP :...:  
 Chan 89

PALM SPRINGS  
 115.5 PSP :...:  
 Chan 102

THERMAL  
 116.2 TRM :...:  
 Chan 109

BLYTHE  
 117.4 BLH :...:  
 Chan 121



NOTE: Chart not to scale.

NOTE: DME required.

## ARRIVAL ROUTE DESCRIPTION

BLYTHE TRANSITION (BLH.SBONO1): From over BLH VORTAC on BLH R-278 and PSP R-072 to SBONO DME. Thence. . .

DECAS TRANSITION (DECAS.SBONO1): From over DECAS INT on BLH R-278 and PSP R-072 to SBONO DME. Thence. . .

GOFFS TRANSITION (GFS.SBONO1): From over GFS VORTAC on GFS R-185 and TNP R-028 to TNP VORTAC, then on TNP R-199 and PSP R-072 to SBONO DME. Thence. . .

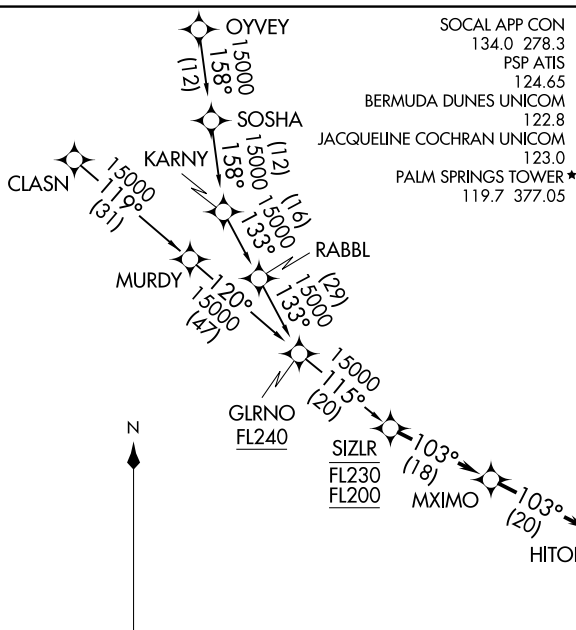
NEEDLES TRANSITION (EED.SBONO1): From over EED VORTAC on EED R-216 and TRM R-037 to UBABE DME, then on PSP R-072 to SBONO DME. Thence. . .

. . . .From over SBONO DME expect RADAR vectors to final approach course.

# SBONO ONE ARRIVAL

SIZLR THREE ARRIVAL (RNAV)  
(SIZLR.SIZLR3) 01FEB18

PALM SPRINGS, CALIFORNIA



SOCAL APP CON  
134.0 278.3  
PSP ATIS  
124.65  
BERMUDA DUNES UNICOM  
122.8  
JACQUELINE COCHRAN UNICOM  
123.0  
PALM SPRINGS TOWER \*  
119.7 377.05

ARRIVAL ROUTE DESCRIPTION

CLASN TRANSITION (CLASN.SIZLR3)  
OYVEY TRANSITION (OYVEY.SIZLR3)

LANDING ALL AIRPORTS: From SIZLR on track 103° to MXIMO, then on track 103° to HITOP, then on track 106° to cross PZUKY at 16000, then on track 106° to cross BITTY at 16000, then on track 106° to cross MORON at 14000, then on track 095° to cross FERNN at 11000, then on track 123° to cross PSP VORTAC at 9000, then on track 124° to cross DEZZY at 9000, then on track 124°. Expect RADAR vectors to final approach course.

LOST COMMUNICATIONS

Proceed direct TRM VORTAC and execute the VOR or GPS-B approach.

- NOTE: RADAR required.
- NOTE: RNAV 1.
- NOTE: DME/DME/IRU or GPS required.
- NOTE: Turbojet and turboprop aircraft only.

NOTE: Chart not to scale.

(SIZLR.SIZLR3) 21188  
SIZLR THREE ARRIVAL (RNAV)

AL-545 (FAA)

PALM SPRINGS, CALIFORNIA