

LOC/DME I-PSC <b>108.7</b> Chan 24	APP CRS <b>211°</b>	Rwy Idg TDZE Apt Elev	<b>7110</b> <b>403</b> <b>410</b>
--	------------------------	-----------------------------	---

# ILS or LOC RWY 21R

TRI-CITIES (PSC)

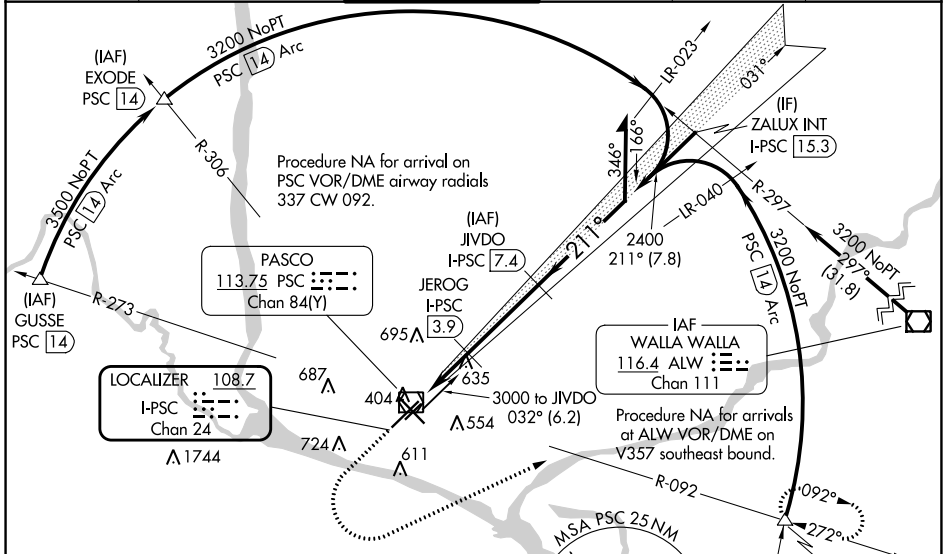
DME required for LOC only.  
DME required for procedure entry at GUSSE, EXODE, CITYS, PSC VOR/DME.

▼ VDP NA when using Hermiston altimeter setting. For inop ALS when using Hermiston altimeter setting, increase S-ILS 21R all Cats visibility to RVR 4500, increase S-LOC 21R Cats C and D visibility to 1 3/4 SM. When local altimeter setting not received, use Hermiston altimeter setting: increase DA to 698 feet and all MDAs 100 feet; increase S-LOC 21R Cat C and D visibility 3/4 SM and Circling Cat C and D visibility 1/4 SM. \* RVR 1800 authorized with use of FD or AP or HUD to DA (NA when using Hermiston altimeter setting).

MALSR

MISSED APPROACH:  
Climb to 1200 then climbing left turn to 3200 on heading 050° and PSC VOR/DME R-092 to CITYS INT/PSC VOR/DME 14 DME and hold.

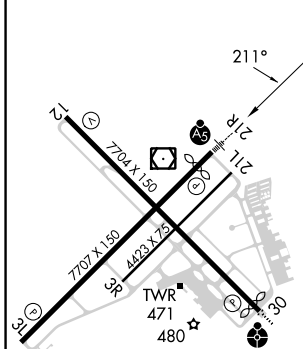
ATIS <b>125.65</b>	SPOKANE APP CON * <b>128.75 377.2</b>	TRI-CITIES TOWER * <b>135.3 (CTAF) 323.3</b>	GND CON <b>121.8</b>	CLNC DEL <b>120.0</b>	UNICOM <b>122.95</b>
-----------------------	--	---	-------------------------	--------------------------	-------------------------



NW-1, 22 FEB 2024 to 21 MAR 2024

NW-1, 22 FEB 2024 to 21 MAR 2024

ELEV 410	D	TDZE 403
----------	---	----------



REIL Rwy 3L and 12  
MIRL Rwy 12-30  
HIRL Rwy 3L-21R

Λ 972 ±

Λ 2463    Λ 2483

1200	3200	PSC R-092	CITYS	JIVDO I-PSC 7.4	Remain within 10 NM
↑	hdg 050°		△		

Use I-PSC DME when on the localizer course.

JEROG I-PSC 3.9

I-PSC 1.3    I-PSC 2.9

2400    2400    2400

031°    211°    2900

1.5 NM    1.1 NM    3.5 NM

GS 3.00° TCH 55

CATEGORY	A	B	C	D
S-ILS 21R*	603/24 200 (200-1/2)			
S-LOC 21R	940/24	537 (600-1/2)	940/55	537 (600-1)
CIRCLING	940-1	530 (600-1)	1040-1 3/4 630 (700-1 3/4)	1100-2 1/4 690 (700-2 1/4)

APP CRS	Rwy ldg	<b>7504</b>
<b>121°</b>	TDZE	<b>402</b>
	Apt Elev	<b>410</b>

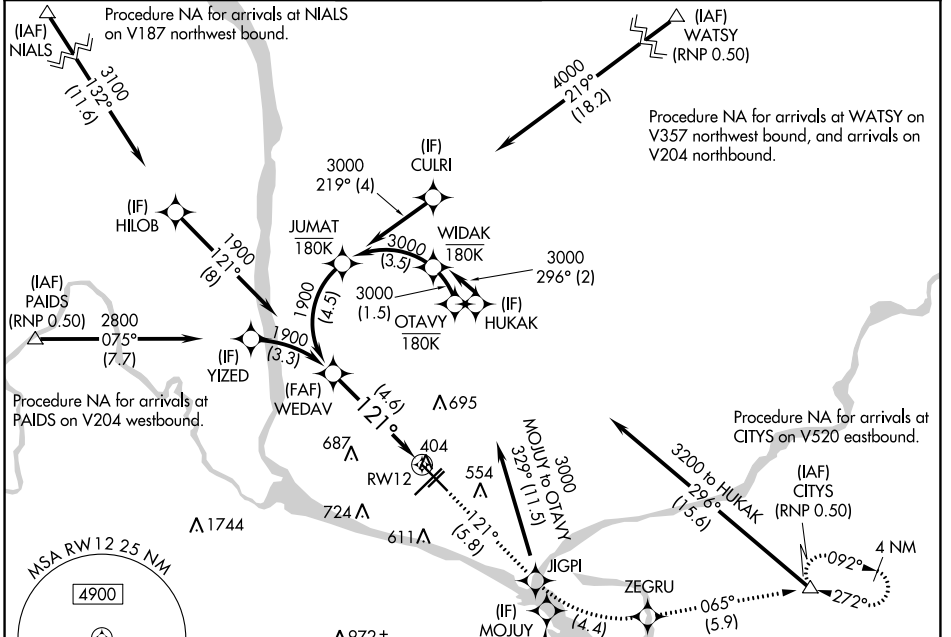
# RNAV (RNP) Z RWY 12

TRI-CITIES (PSC)

**▼** For uncompensated Baro-VNAV systems, procedure NA below -14°C (7°F) or above 54°C (130°F). GPS required. RF required.

**MISSED APPROACH:** Climb to 3200 on track 121° to JIGPI, left turn to ZEGRU, and on track 065° to CITYS and hold.

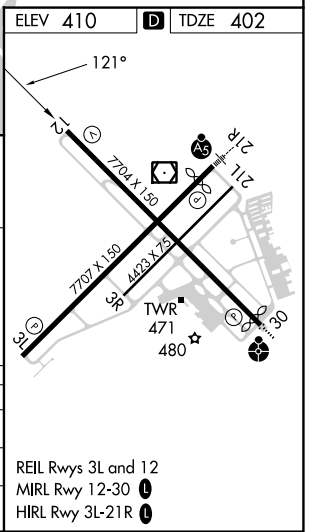
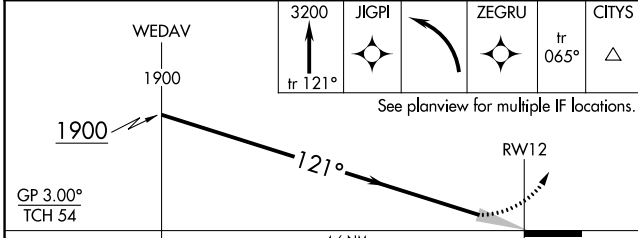
ATIS	SPOKANE APP CON *	TRI-CITIES TOWER *	GND CON	CLNC DEL	UNICOM
<b>125.65</b>	<b>128.75 377.2</b>	<b>135.3 (CTAF) 0 323.3</b>	<b>121.8</b>	<b>120.0</b>	<b>122.95</b>



NW-1, 22 FEB 2024 to 21 MAR 2024

NW-1, 22 FEB 2024 to 21 MAR 2024

ELEV 410	TDZE 402
----------	----------



CATEGORY	A	B	C	D
RNP 0.11 DA		769-1¼	367 (400-1¼)	
RNP 0.30 DA		883-1½	481 (500-1½)	

**AUTHORIZATION REQUIRED**


REIL Rwy 3L and 12  
MIRL Rwy 12-30  
HIRL Rwy 3L-21R

# RNAV (RNP) Z RWY 21R

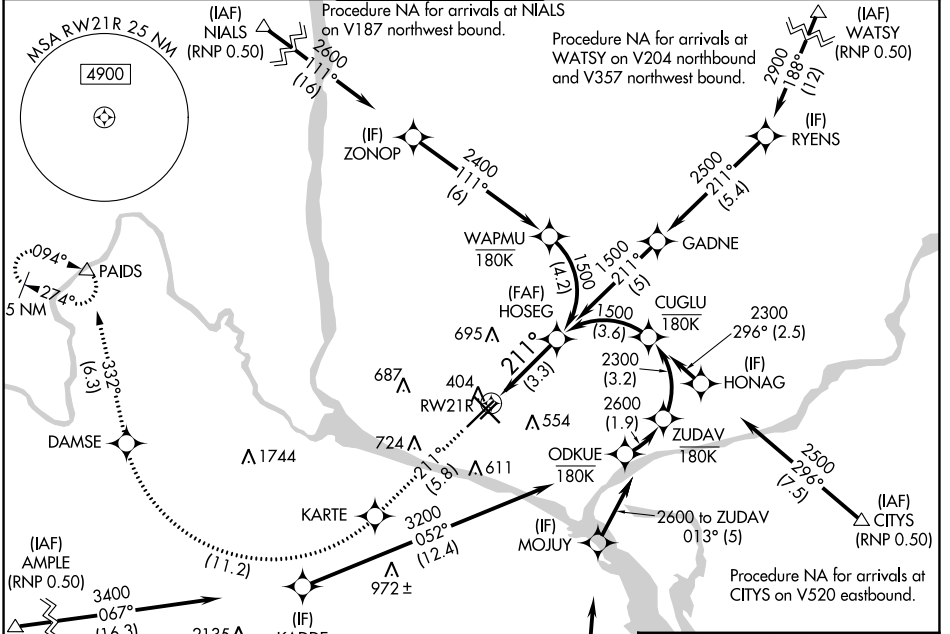
TRI-CITIES (PSC)

APP CRS	Rwy Idg	<b>7110</b>
<b>211°</b>	TDZE	<b>404</b>
	Apt Elev	<b>410</b>



**⚠** For uncompensated Baro-VNAV systems, procedure NA below -14°C (7°F) or above 54°C (130°F). GPS required. RF required. For inoperative MALS, increase RNP 0.11 all Cats visibility to RVR 5700 and RNP 0.30 all Cats visibility to 1 3/8 mile.

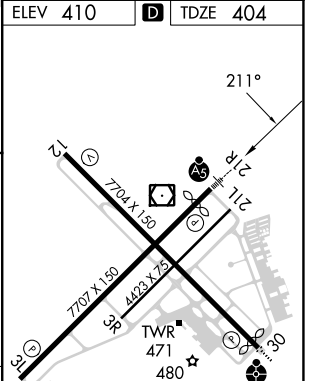
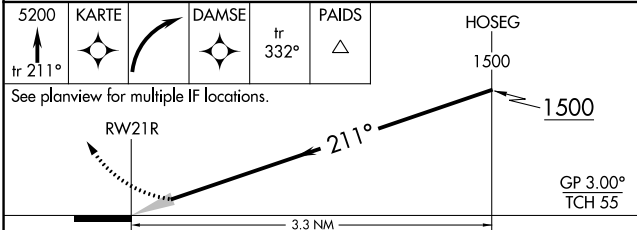
**MALS**  MISSED APPROACH: Climb to 5200 on track 211° to KARTE, right turn to DAMSE, and on track 332° to PAIDS and hold.

ATIS <b>125.65</b>	SPOKANE APP CON * <b>128.75 377.2</b>	TRI-CITIES TOWER* <b>135.3 (CTAF) 0 323.3</b>	GND CON <b>121.8</b>	CLNC DEL <b>120.0</b>	UNICOM <b>122.95</b>
-----------------------	--	--	-------------------------	--------------------------	-------------------------





ELEV 410	<b>D</b> TDZE 404
----------	-------------------

5200 KARTE  DAMSE tr 332° PAIDS  HOSEG 1500



CATEGORY	A	B	C	D
RNP 0.11 DA		754/33	350 (400-3/4)	
RNP 0.30 DA		832/48	428 (500-1)	

## AUTHORIZATION REQUIRED

REIL Rwy 3L and 12  
MIRL Rwy 12-30   
HIRL Rwy 3L-21R 

NW-1, 22 FEB 2024 to 21 MAR 2024

NW-1, 22 FEB 2024 to 21 MAR 2024



APP CRS <b>031°</b>	Rwy Idg TDZE Apt Elev	<b>7707</b> <b>410</b> <b>410</b>
------------------------	-----------------------------	---

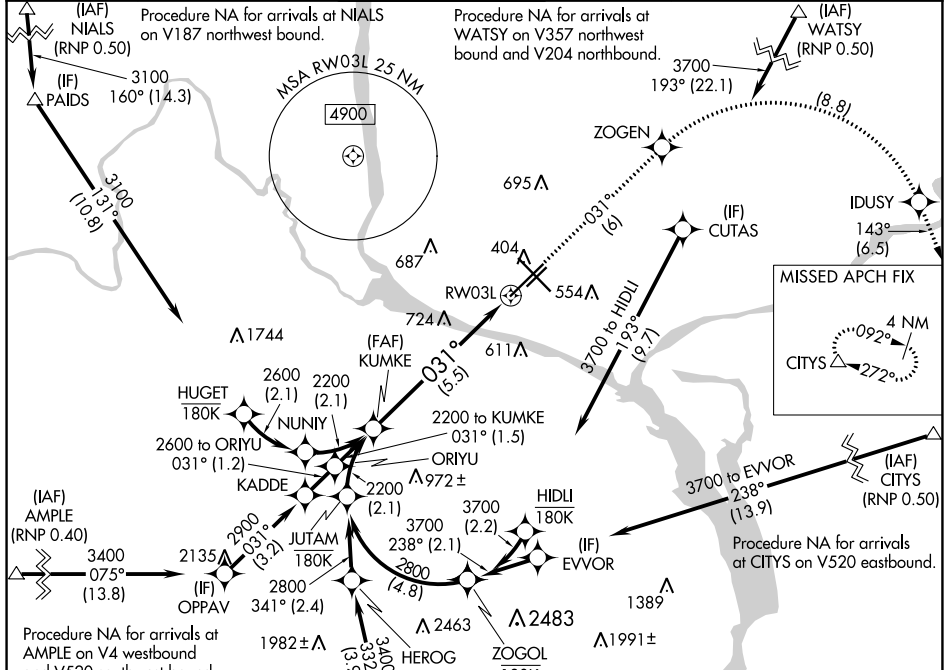
# RNAV (RNP) Z RWY 3L

TRI-CITIES (PSC)

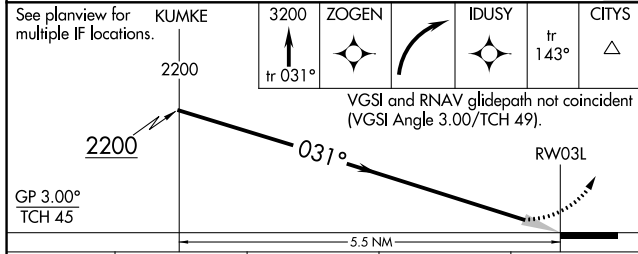
RNP AR APCH. RF required.  
 ▽ For uncompensated Baro-VNAV systems, procedure NA below -14°C or above 54°C.

MISSED APPROACH: Climb to 3200 on track 031° to ZOGEN, right turn to IDUSY, and on track 143° to CITYS and hold.

ATIS <b>125.65</b>	SPOKANE APP CON * <b>128.75 377.2</b>	TRI-CITIES TOWER * <b>135.3 (CTAF) 0 323.3</b>	GND CON <b>121.8</b>	CLNC DEL <b>120.0</b>	UNICOM <b>122.95</b>
-----------------------	--	---	-------------------------	--------------------------	-------------------------



Procedure NA for arrivals at AMPL on V4 westbound and V520 southwest bound.  
 Procedure NA for arrivals at CORDO on V4 eastbound.  
 Procedure NA for arrivals at NIALS on V187 northwest bound.  
 Procedure NA for arrivals at WATSY on V357 northwest bound and V204 northbound.  
 Procedure NA for arrivals at IDUSY on V520 eastbound.



ELEV 410	TDZE 410
----------	----------

REIL Rwy 3L and 12  
 MIRL Rwy 12-30  
 HIRL Rwy 3L-21R

CATEGORY	A	B	C	D
RNP 0.11 DA		729-1	319 (400-1)	
RNP 0.30 DA		849-1½	439 (500-1½)	

**AUTHORIZATION REQUIRED**

NW-1, 22 FEB 2024 to 21 MAR 2024

NW-1, 22 FEB 2024 to 21 MAR 2024

WAAS CH <b>58006</b> W12A	APP CRS <b>121°</b>	Rwy Idg <b>7504</b> TDZE <b>402</b> Apt Elev <b>410</b>
---------------------------------	------------------------	---

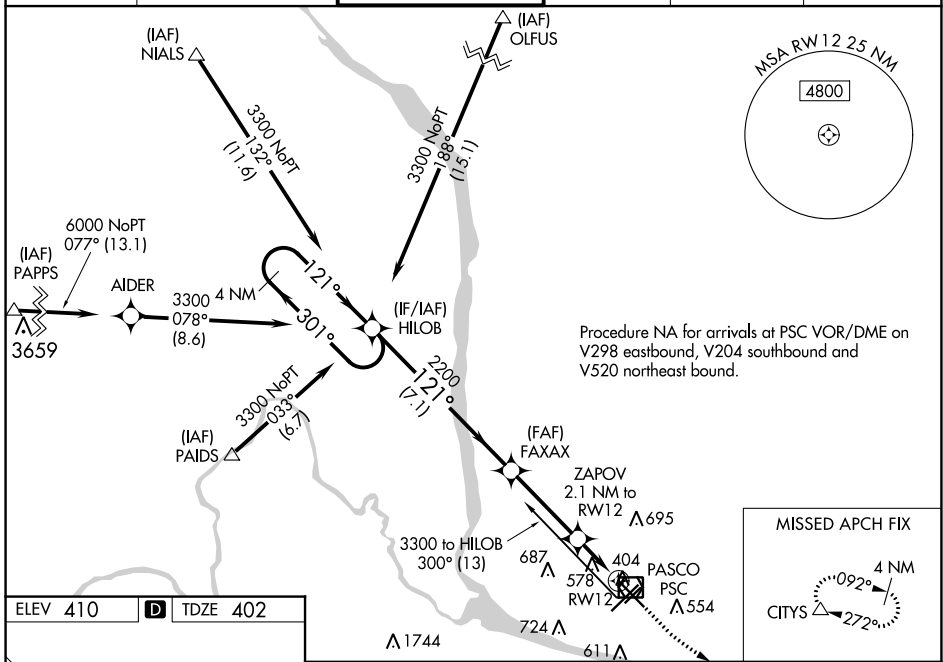
# RNAV (GPS) Y RWY 12

TRI-CITIES (PSC)

**⚠** Baro-VNAV NA when using Hermiston altimeter setting. For uncompensated Baro-VNAV systems, LNAV/VNAV NA below -14°C (7°F) or above 54°C (130°F). DME/DME RNP-0.3 NA. VDP NA with Hermiston altimeter setting. When local altimeter setting not received, use Hermiston altimeter setting; increase all DA 95 feet and all MDA 100 feet. Increase LPV all Cats visibilities 1/8 mile; LNAV/VNAV all Cats visibilities 3/8 mile; increase LNAV and Circling Cats C and D visibility 1/4 mile.

**MISSED APPROACH:**  
Climb to 900 then climbing left turn to 3200 direct CITYS and hold.

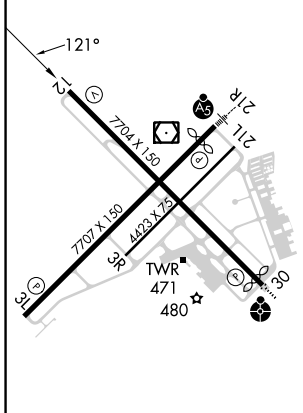
ATIS <b>125.65</b>	SPOKANE APP CON * <b>128.75 377.2</b>	TRI-CITIES TOWER * <b>135.3 (CTAF) 0 323.3</b>	GND CON <b>121.8</b>	CLNC DEL <b>120.0</b>	UNICOM <b>122.95</b>
-----------------------	--	---	-------------------------	--------------------------	-------------------------



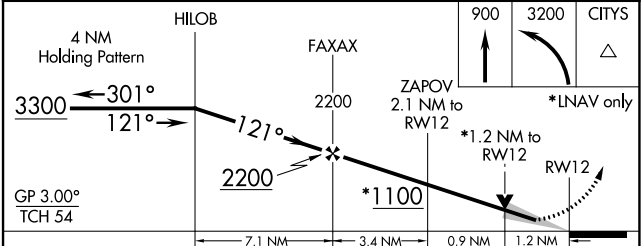
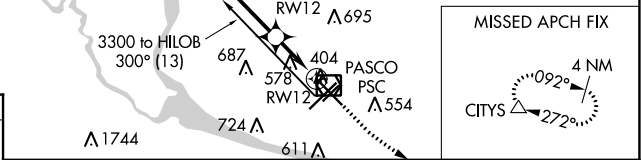
NW-1, 22 FEB 2024 to 21 MAR 2024

NW-1, 22 FEB 2024 to 21 MAR 2024

ELEV 410	<b>D</b>	TDZE 402
----------	----------	----------



REIL Rwy 3L and 12  
MIRL Rwy 12-30 **1**  
HIRL Rwy 3L-21R **0**



CATEGORY	A	B	C	D
LPV DA		602-3/4	200 (200-3/4)	
LNAV/VNAV DA		755-1 1/8	353 (400-1 1/8)	
LNAV MDA	840-1	438 (500-1)	840-1 3/8	438 (500-1 3/8)
<b>C</b> CIRCLING	880-1 470 (500-1)	940-1 530 (600-1)	1040-1 3/4 630 (700-1 3/4)	1100-2 1/4 690 (700-2 1/4)


WAAS CH <b>40303</b> <b>W21A</b>	APP CRS <b>211°</b>	Rwy Idg TDZE Apt Elev	<b>7110</b> <b>404</b> <b>410</b>
--	------------------------	-----------------------------	---

# RNAV (GPS) Y RWY 21R

TRI-CITIES (PSC)

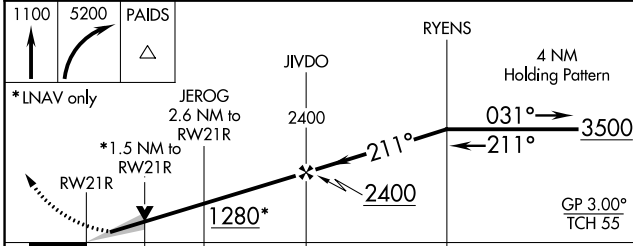
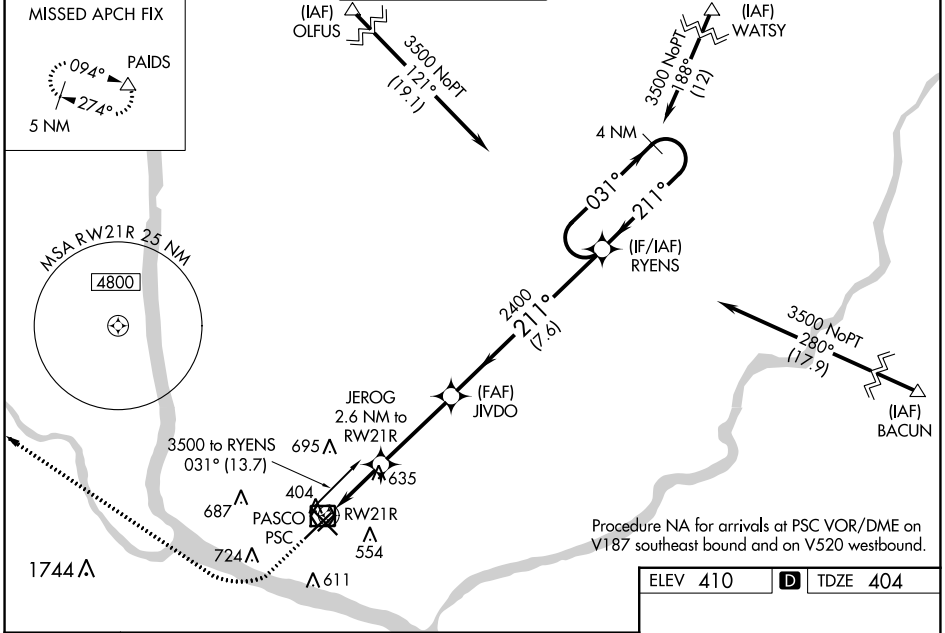
**⚠** Baro-VNAV NA when using Hermiston altimeter setting. For uncompensated Baro-VNAV systems, LNAV/VNAV NA below -1.4°C (7°F) or above 54°C (130°F).  
**⚠** DME/DME RNP-0.3 NA. VDP NA with Hermiston altimeter setting. When local altimeter setting not received, use Hermiston altimeter setting and increase all DA 95 feet and all MDA 100 feet; increase LNAV/VNAV all Cats visibility 3/8 mile; LNAV Cat C and D visibility 3/8 mile and Circling Cat C and D visibility 1/4 mile.  
 # RVR 1800 authorized with use of FD or AP or HUD to DA, NA when using Hermiston altimeter setting.

**MALSR**



**MISSED APPROACH:**  
 Climb to 1100 then climbing right turn to 5200 direct PAIDS and hold, continue climb-in-hold to 5200.

ATIS <b>125.65</b>	SPOKANE APP CON* <b>128.75 377.2</b>	TRI-CITIES TOWER* <b>135.3 (CTAF) 0 323.3</b>	GND CON <b>121.8</b>	CLNC DEL <b>120.0</b>	UNICOM <b>122.95</b>
-----------------------	---	--	-------------------------	--------------------------	-------------------------



CATEGORY	A	B	C	D
LPV DA#		604/24	200 (200-1/2)	
LNAV/VNAV DA		844/51	440 (500-1)	
LNAV MDA	940/24	536 (600-1/2)	940/55	536 (600-1)
<b>C</b> CIRCLING	940-1	530 (600-1)	1040-1 3/4 630 (700-1 3/4)	1100-2 1/4 690 (700-2 1/4)

ELEV 410 **D** TDZE 404

REIL Rwy 3L and 12  
 MIRL Rwy 12-30  
 HIRL Rwy 3L-21R

NW-1, 22 FEB 2024 to 21 MAR 2024

NW-1, 22 FEB 2024 to 21 MAR 2024

WAAS CH <b>86605</b> <b>W30A</b>	APP CRS <b>301°</b>	Rwy Idg TDZE Apt Elev	<b>7504</b> <b>405</b> <b>410</b>
--	------------------------	-----------------------------	---

# RNAV (GPS) Y RWY 30

TRI-CITIES (PSC)

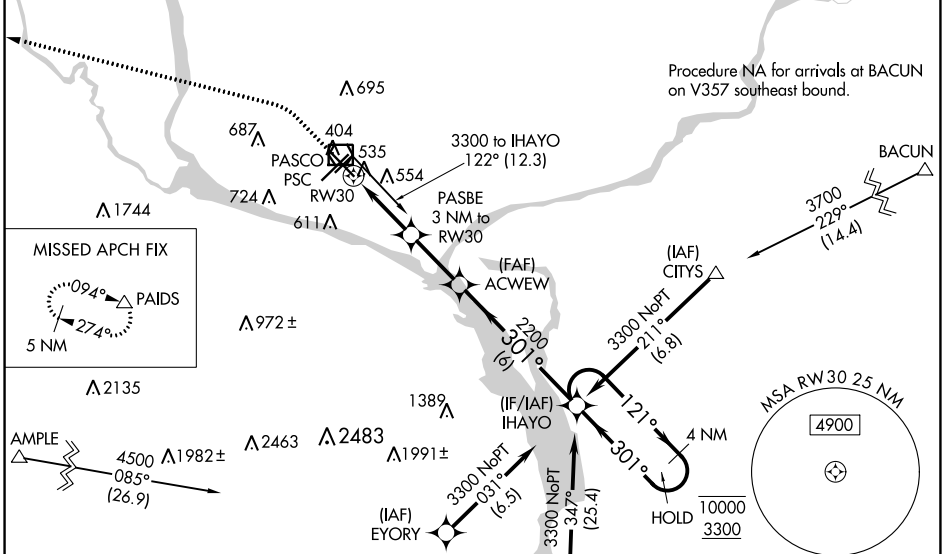
RNP APCH.

**▼** Baro-VNAV and VDP NA when using Hermiston altimeter setting. Rwy 30 helicopter visibility reduction below 3/4 SM NA. For uncompensated Baro-VNAV systems, LNAV/VNAV NA below -14°C or above 54°C. When local altimeter setting not received, use Hermiston altimeter setting; increase all DA 95 feet and all MDA 100 feet. Increase LPV and LNAV/VNAV all Cats visibilities 1/4 mile; increase LNAV and Circling Cats C and D visibility 1/4 mile.

**▲** MISSED APPROACH: Climb to 900 then climbing left turn to 5200 direct PAIDS and hold, continue climb-in-hold to 5200.

ODALS

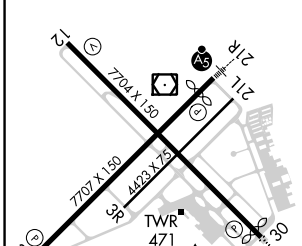
ATIS <b>125.65</b>	SPOKANE APP CON* <b>128.75 377.2</b>	TRI-CITIES TOWER* <b>135.3 (CTAF) 0 323.3</b>	GND CON <b>121.8</b>	CLNC DEL <b>120.0</b>	UNICOM <b>122.95</b>
-----------------------	---	--	-------------------------	--------------------------	-------------------------



NW-1, 22 FEB 2024 to 21 MAR 2024

NW-1, 22 FEB 2024 to 21 MAR 2024

ELEV 410	<b>D</b>	TDZE 405
----------	----------	----------



900 5200 PAIDS

\*LNAV only PASBE 3 NM to RW30  
\*1.2 NM to RW30

RW30 1400\* 2200 301° 121° 10000 3300

ACWEW IHAYO 4 NM Holding Pattern

GP 3.00° TCH 54

CATEGORY	A	B	C	D
LPV DA		655-3/4	250 (300-3/4)	
LNAV/VNAV DA		749-1	344 (400-1)	
LNAV MDA	840-3/4	435 (500-3/4)	840-1 1/8	435 (500-1 1/8)
<b>C</b> CIRCLING	880-1 470 (500-1)	940-1 530 (600-1)	1040-1 3/4 630 (700-1 3/4)	1100-2 1/4 690 (700-2 1/4)

PASCO, WASHINGTON  
Amdt 3A 05DEC19

46°16'N-119°07'W

# TRI-CITIES (PSC)

## RNAV (GPS) Y RWY 30



WAAS CH <b>40206</b> <b>W03A</b>	APP CRS <b>031°</b>	Rwy Idg TDZE Apt Elev	<b>7707</b> <b>410</b> <b>410</b>
--	------------------------	-----------------------------	---

# RNAV (GPS) Y RWY 3L

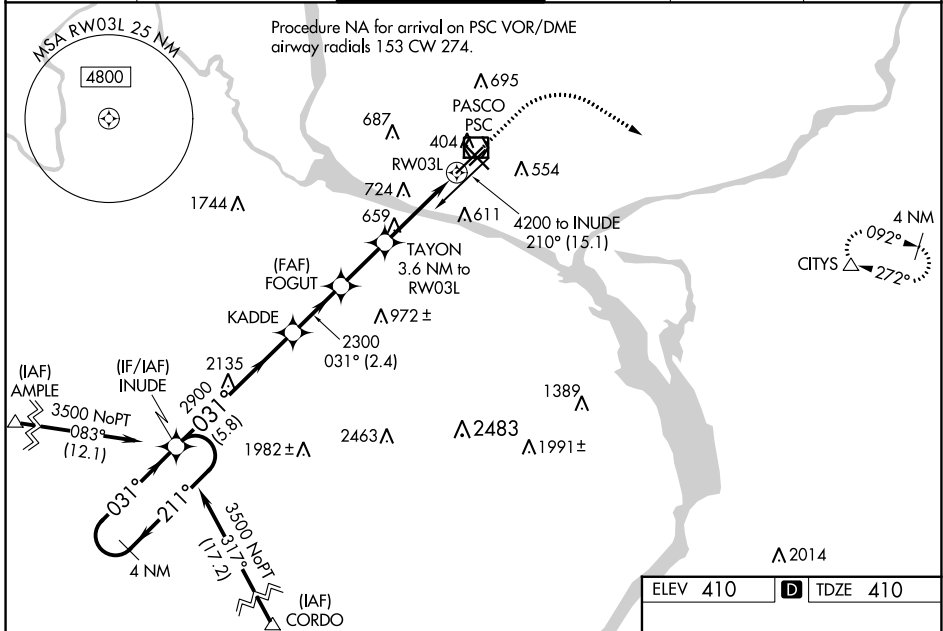
TRI-CITIES (PSC)

RNP APCH.

**⚠** Baro-VNAV NA when using Hermiston altimeter setting. For uncompensated Baro-VNAV systems, LNAV/VNAV NA below -14°C or above 54°C. VDP NA with Hermiston altimeter setting. When local altimeter setting not received, use Hermiston altimeter setting: increase all DA 95 feet and all MDA 100 feet. Increase LPV all Cats visibility ¼ mile, LNAV/VNAV all Cats visibilities ⅓ mile: increase LNAV Cats C and D visibility ⅓ mile. Circling Cat C and D visibility ¼ mile.

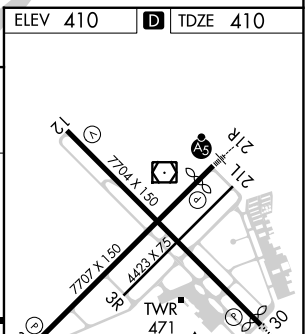
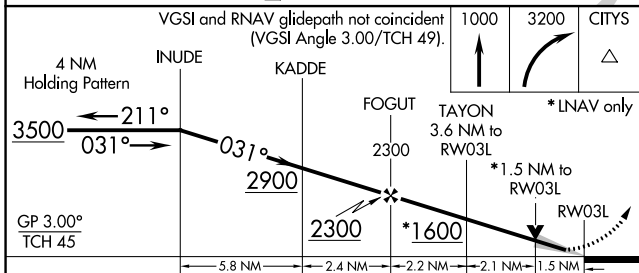
**MISSED APPROACH:**  
Climb to 1000 then climbing right turn to 3200 direct CITYS and hold.

ATIS <b>125.65</b>	SPOKANE APP CON* <b>128.75 377.2</b>	TRI-CITIES TOWER* <b>135.3 (CTAF) 0 323.3</b>	GND CON <b>121.8</b>	CLNC DEL <b>120.0</b>	UNICOM <b>122.95</b>
-----------------------	---	--	-------------------------	--------------------------	-------------------------



NW-1, 22 FEB 2024 to 21 MAR 2024

NW-1, 22 FEB 2024 to 21 MAR 2024



CATEGORY		A	B	C	D
LPV DA		610-¾	200 (200-¾)		
LNAV/VNAV DA		708-1	298 (300-1)		
LNAV MDA		920-1 510 (600-1)	920-1 510 (600-1 ⅓)		
<b>C</b> CIRCLING		920-1 510 (600-1)	940-1 530 (600-1)	1040-1 630 (700-1 ⅓)	1100-2 690 (700-2 ¼)

ELEV 410 **D** TDZE 410

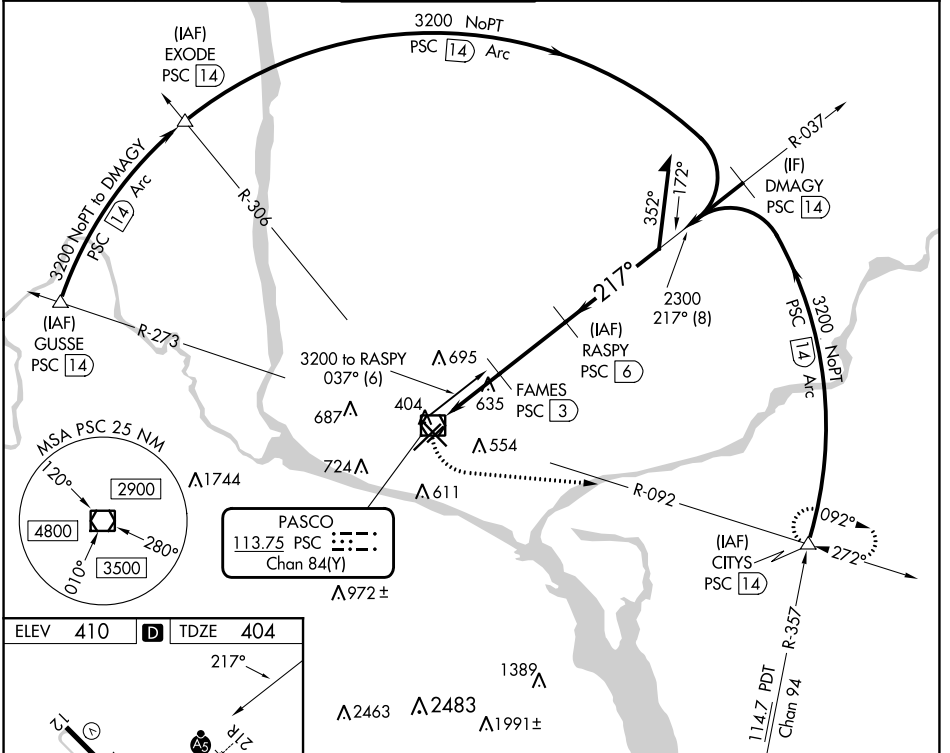
REIL Rwy 3L and 12  
MIRL Rwy 12-30 **⓪**  
HIRL Rwy 3L-21R **⓪**

VOR/DME PSC <b>113.75</b> Chan <b>84(Y)</b>	APP CRS <b>217°</b>	Rwy Idg <b>7110</b> TDZE <b>404</b> Apt Elev <b>410</b>
---	------------------------	---

# VOR RWY 21R

TRI-CITIES (PSC)

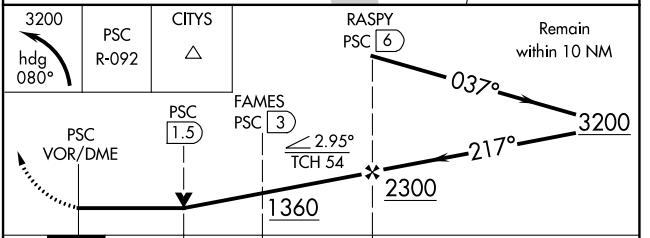
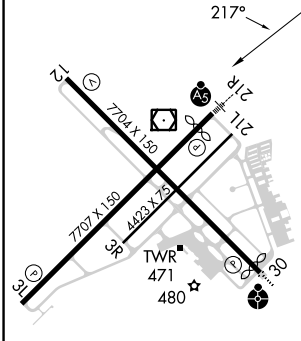
DME required.		MALSRL	MISSED APPROACH: Climbing left turn to 3200 on heading 080° and PSC VOR/DME R-092 PSC VOR/DME to CITYS INT/PSC 14 DME and hold.		
ATIS <b>125.65</b>	SPOKANE APP CON * <b>128.75 377.2</b>	TRI-CITIES TOWER * <b>135.3 (CTAF) 323.3</b>	GND CON <b>121.8</b>	CLNC DEL <b>120.0</b>	UNICOM <b>122.95</b>



NW-1, 22 FEB 2024 to 21 MAR 2024

NW-1, 22 FEB 2024 to 21 MAR 2024

ELEV 410	<b>D</b>	TDZE 404
----------	----------	----------



CATEGORY	A	B	C	D
S-21R	940/24	536 (600-½)	940/55	536 (600-1)
<b>C</b> CIRCLING	940-1	530 (600-1)	1040-1¼ 630 (700-1¾)	1100-2¼ 690 (700-2¼)

REIL Rwy 3L and 12  
MIRL Rwy 12-30  
HIRL Rwy 3L-21R

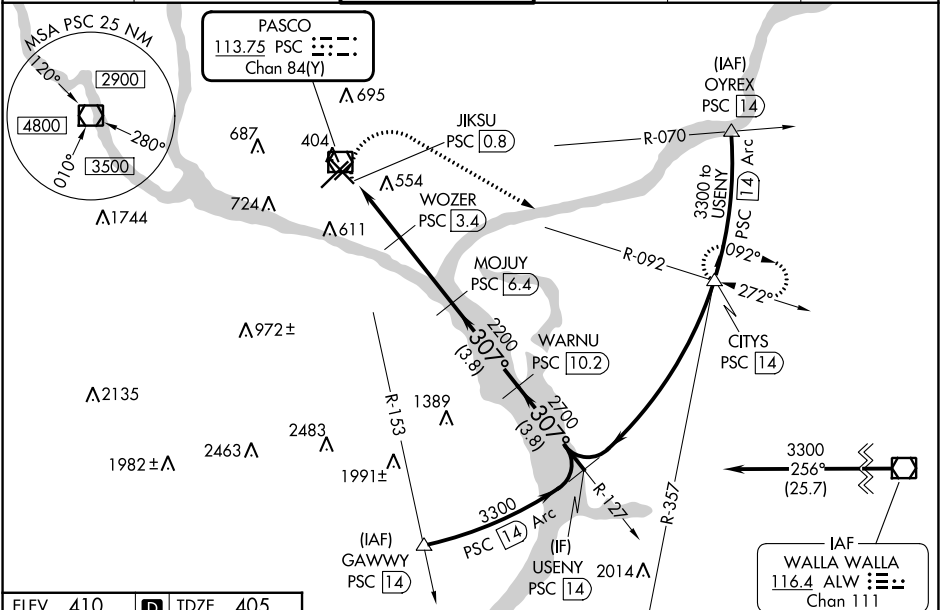
VOR/DME PSC <b>113.75</b> Chan 84(Y)	APP CRS <b>307°</b>	Rwy Idg TDZE <b>405</b> Apt Elev <b>410</b>
--	------------------------	---

# VOR RWY 30

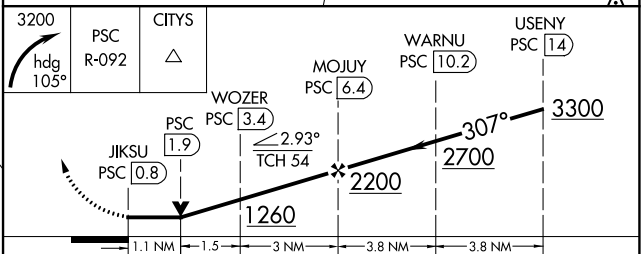
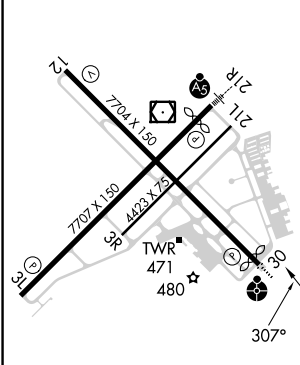
TRI-CITIES(PSC)

DME required.	ODALS	MISSED APPROACH: Climbing right turn to 3200 on heading 105° and PSC R-092 to CITYS/PSC 1.4 DME and hold.
---------------	-------	---

ATIS <b>125.65</b>	SPOKANE APP CON * <b>128.75 377.2</b>	TRI-CITIES TOWER * <b>135.3 (CTAF) 323.3</b>	GND CON <b>121.8</b>	CLNC DEL <b>120.0</b>	UNICOM <b>122.95</b>
-----------------------	--	---	-------------------------	--------------------------	-------------------------



ELEV 410	D	TDZE 405
----------	---	----------



CATEGORY	A	B	C	D
S-30	820-3/4	415 (500-3/4)	820-1	415 (500-1)
<b>C</b> CIRCLING	880-1 470 (500-1)	940-1 530 (600-1)	1040-1-3/4 630 (700-1-3/4)	1100-2-1/4 690 (700-2-1/4)

NW-1, 22 FEB 2024 to 21 MAR 2024

NW-1, 22 FEB 2024 to 21 MAR 2024