

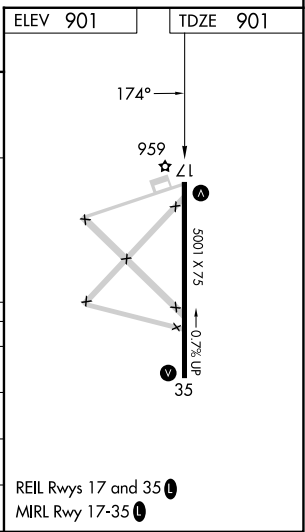
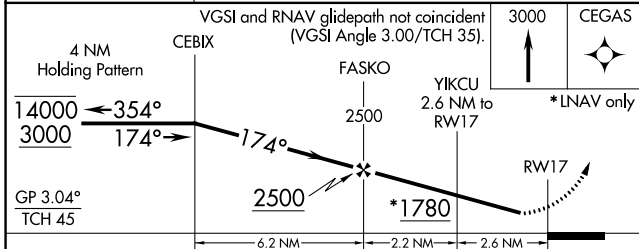
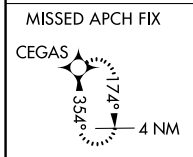
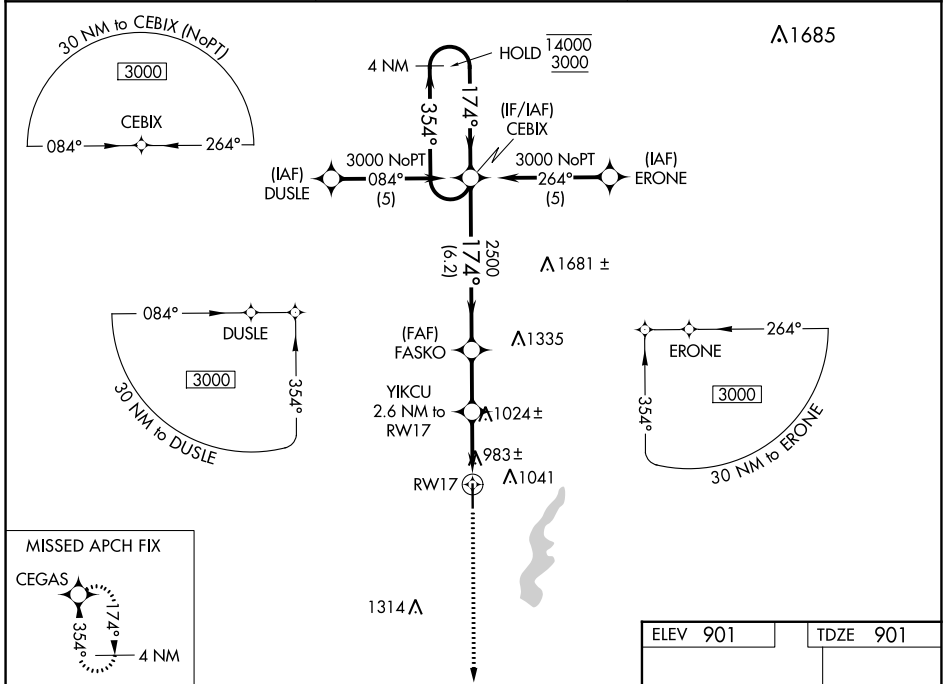
WAAS CH <b>86508</b> <b>W17A</b>	APP CRS <b>174°</b>	Rwy Idg TDZE Apt Elev	<b>5001</b> <b>901</b> <b>901</b>
--	------------------------	-----------------------------	---

# RNAV (GPS) RWY 17

TRI-CITY (PPF)

RNP APCH. ▼ Procedure NA at night. Rwy 17 helicopter visibility reduction below 1 SM NA. For uncompensated Baro-VNAV systems, procedure NA below -16°C or above 54°C. ▲ MISSED APPROACH: Climb to 3000 direct CEGAS and hold.	ASOS <b>118.175</b>	KANSAS CITY CENTER <b>128.6 282.325</b>	UNICOM <b>123.0 (CTAF)</b>
---	------------------------	--	-------------------------------

ASOS <b>118.175</b>	KANSAS CITY CENTER <b>128.6 282.325</b>	UNICOM <b>123.0 (CTAF)</b>
------------------------	--	-------------------------------



CATEGORY	A	B	C	D
LPV DA	1194-1	293 (300-1)		NA
LNAV/VNAV DA	1256-1¼	355 (400-1¼)		NA
LNAV MDA	1360-1	459 (500-1)	1360-1⅜ 459 (500-1⅜)	NA
CIRCLING	1420-1 519 (600-1)	1440-1 539 (600-1)	1440-1½ 539 (600-1½)	NA

NC-2, 22 FEB 2024 to 21 MAR 2024

NC-2, 22 FEB 2024 to 21 MAR 2024

WAAS CH <b>78208</b> <b>W35A</b>	APP CRS <b>354°</b>	Rwy Idg TDZE Apt Elev	<b>5001</b> <b>880</b> <b>901</b>
--	------------------------	-----------------------------	---

# RNAV (GPS) RWY 35

TRI-CITY (PPF)

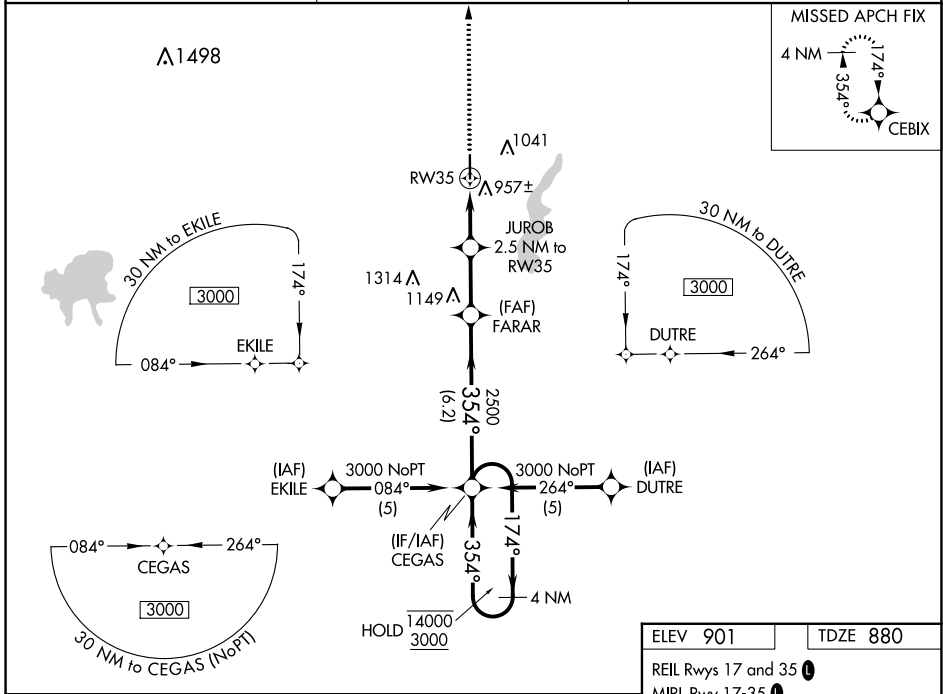
RNP APCH.  
 Procedure NA at night. Rwy 35 helicopter visibility reduction below 1 SM NA. For uncompensated Baro-VNAV systems, LNAV/VNAV NA below -16°C or above 54°C.

MISSED APPROACH: Climb to 3000 direct CEBIX and hold.

ASOS  
**118.175**

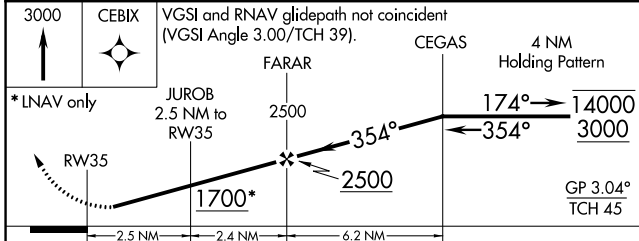
KANSAS CITY CENTER  
**128.6 282.325**

UNICOM  
**123.0 (CTAF) 0**

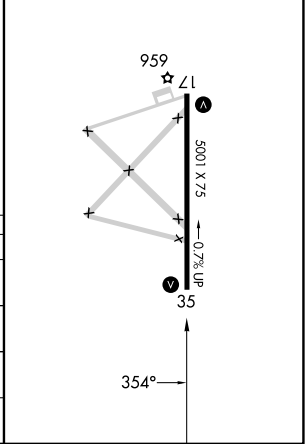


NC-2, 22 FEB 2024 to 21 MAR 2024

NC-2, 22 FEB 2024 to 21 MAR 2024



ELEV 901	TDZE 880
REIL Rwy 17 and 35	MIRL Rwy 17-35



CATEGORY	A	B	C	D
LPV DA	1130-1	250 (300-1)		NA
LNAV/VNAV DA	1174-1	294 (300-1)		NA
LNAV MDA	1300-1	420 (400-1)	1300-1¼ 420 (400-1¼)	NA
CIRCLING	1420-1 519 (600-1)	1440-1 539 (600-1)	1440-1½ 539 (600-1½)	NA

VOR/DME CNU <b>109.2</b> Chan 29	APP CRS <b>161°</b>	Rwy Idg TDZE Apt Elev	<b>5001</b> <b>901</b> <b>901</b>
--	------------------------	-----------------------------	---

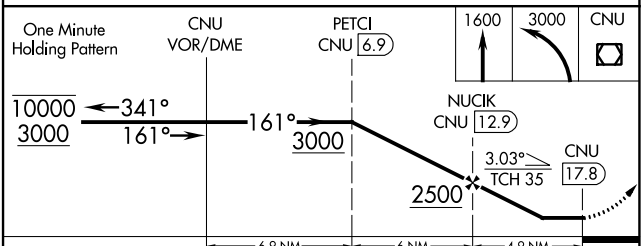
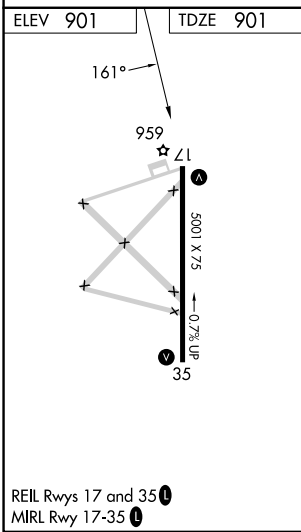
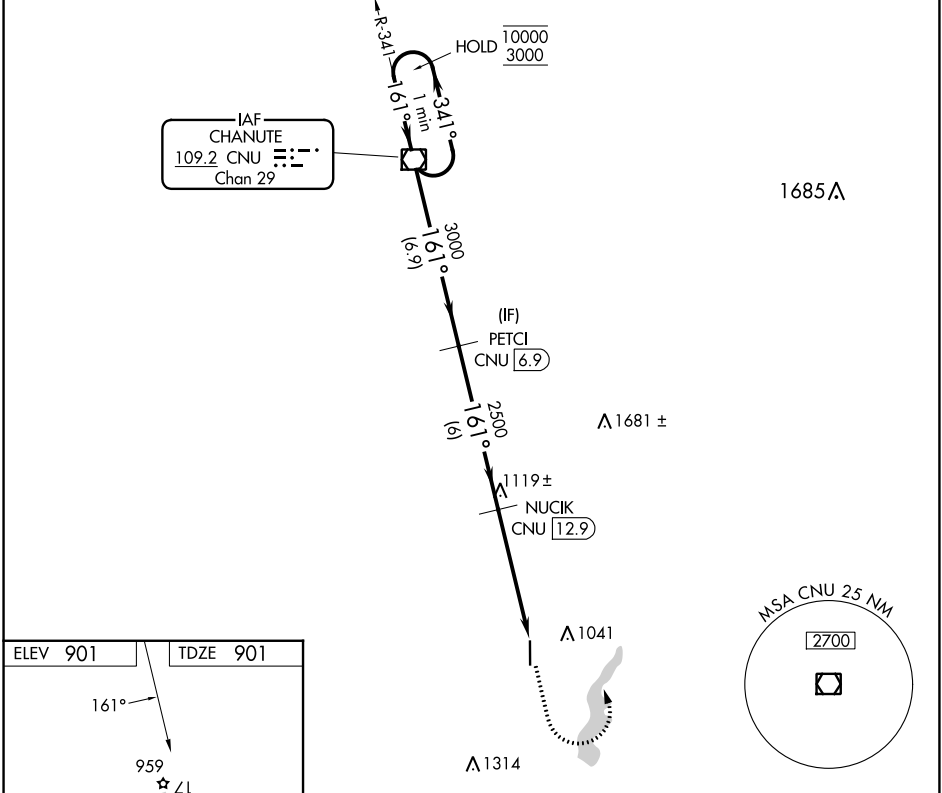
# VOR RWY 17

TRI-CITY (PPF)

DME required  
 Procedure NA at night.  
 Rwy 17 helicopter visibility reduction below 1 SM NA.

MISSED APPROACH: Climb to 1600 then climbing left turn to 3000 direct CNU VOR/DME and hold.

ASOS <b>118.175</b>	KANSAS CITY CENTER <b>128.6 282.325</b>	UNICOM <b>123.0</b> (CTAF)
------------------------	--	-------------------------------



CATEGORY	A	B	C	D
S-17	1380-1	479 (500-1)	1380-1 $\frac{3}{8}$ 479 (500-1 $\frac{3}{8}$ )	NA
CIRCLING	1420-1 519 (600-1)	1440-1 539 (600-1)	1440-1 $\frac{1}{2}$ 539 (600-1 $\frac{1}{2}$ )	NA

NC-2, 22 FEB 2024 to 21 MAR 2024

NC-2, 22 FEB 2024 to 21 MAR 2024