

| | | | |
|--|------------------------|-----------------------------|---------------------------------------|
| WAAS CH 63125 W21A | APP CRS 207° | Rwy Idg TDZE Apt Elev | 5500 35 36 |
|--|------------------------|-----------------------------|---------------------------------------|

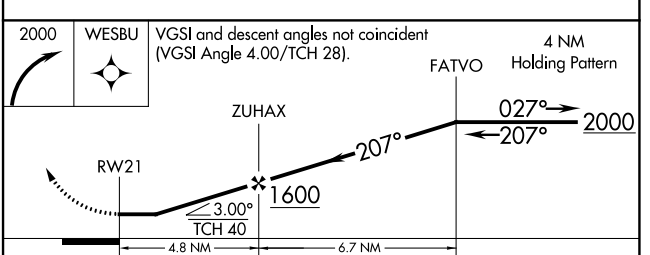
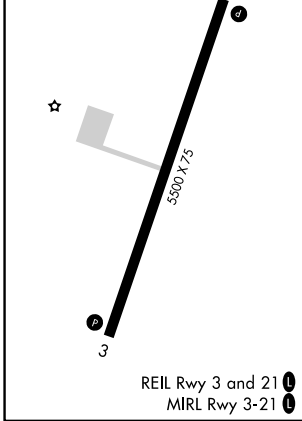
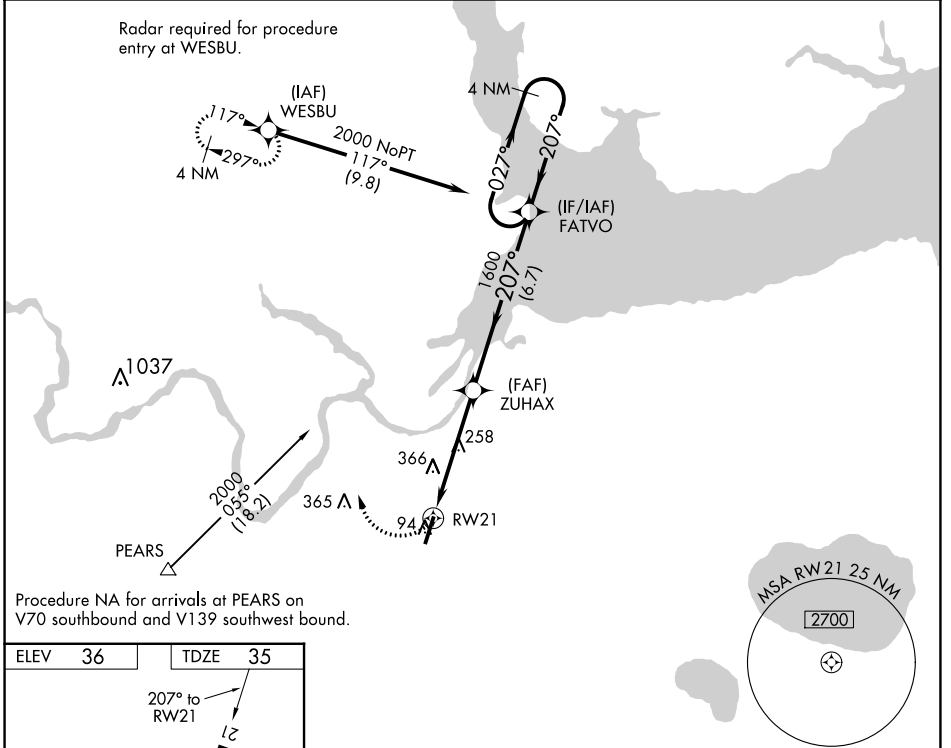
RNAV (GPS) RWY 21

PLYMOUTH MUNI (PMZ)

NA Use Northeastern Rgnl altimeter setting; when not received, use Coastal Carolina Rgnl altimeter setting and increase all MDA 80 feet; increase all Cat C visibilities ¼ SM. When VGSI inop, procedure NA at night. DME/DME RNP-0.3 NA.

MISSED APPROACH: Climbing right turn to 2000 direct WESBU and hold.

| | |
|---|---------------------------------|
| CHERRY POINT APP CON 119.35 377.175 | UNICOM 122.8 (CTAF) 0 |
|---|---------------------------------|



| CATEGORY | A | B | C | D |
|----------|----------------------|----------------------|------------------------|----|
| LP MDA | 600-1 | 565 (600-1) | 600-1½ 565 (600-1½) | NA |
| LNAV MDA | 660-1 | 625 (700-1) | 660-1¾ 625 (700-1¾) | NA |
| CIRCLING | 660-1 624 (700-1) | 720-1 684 (700-1) | 720-2 684 (700-2) | NA |

SE-2, 22 FEB 2024 to 21 MAR 2024

SE-2, 22 FEB 2024 to 21 MAR 2024

| | | |
|--|------------------------|---|
| WAAS CH 93825 W03A | APP CRS 027° | Rwy Idg 5500 TDZE 36 Apt Elev 36 |
|--|------------------------|---|

RNAV (GPS) RWY 3

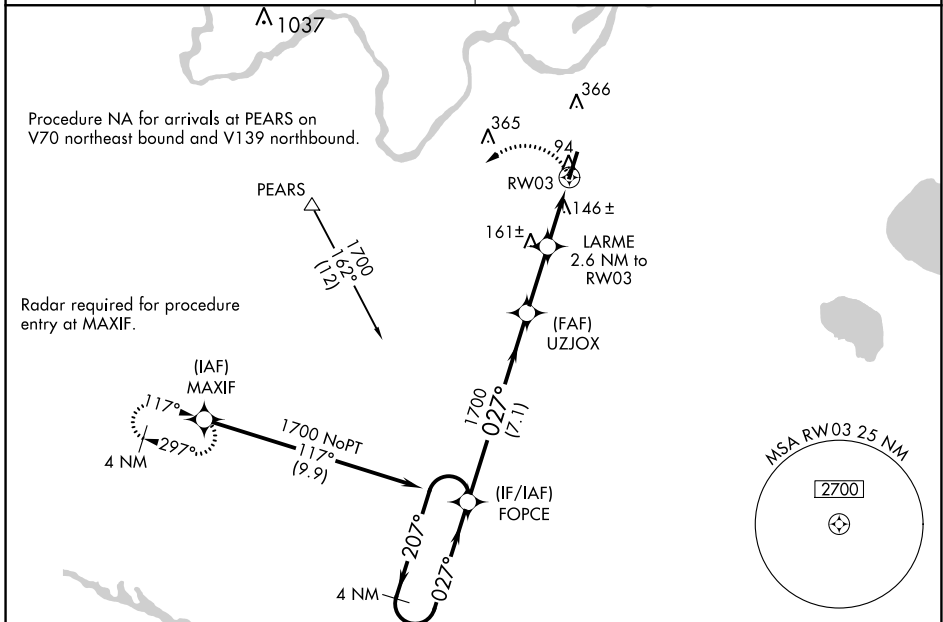
PLYMOUTH MUNI (PMZ)

⚠ Use Northeastern Rgnl altimeter setting; when not received, use Coastal Carolina Rgnl altimeter setting and increase all MDA 80 feet; increase all Cat C visibilities 1/4 SM. **NA** When VGSI inop, procedure NA at night. DME/DME RNP-0.3 NA. Visibility reduction by helicopters NA.

MISSED APPROACH: Climbing left turn to 2000 direct MAXIF and hold.

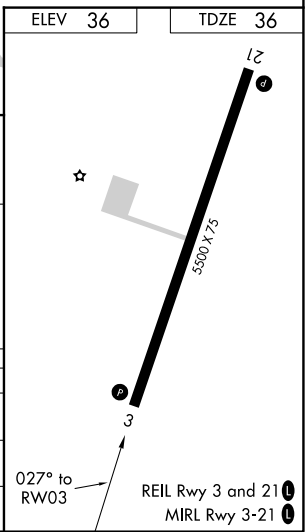
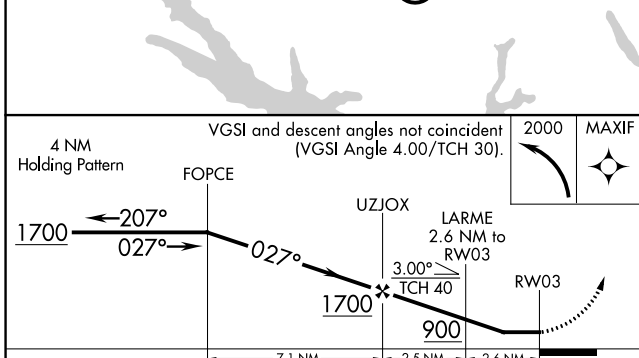
CHERRY POINT APP CON
119.35 377.175

UNICOM
122.8 (CTAF)



SE-2, 22 FEB 2024 to 21 MAR 2024

SE-2, 22 FEB 2024 to 21 MAR 2024



| CATEGORY | A | B | C | D |
|----------|----------------------|----------------------|------------------------------|----|
| LP MDA | 440-1 | 404 (500-1) | 440-1 1/8 404 (500-1 1/8) | NA |
| LNAV MDA | 460-1 | 424 (500-1) | 460-1 1/4 424 (500-1 1/4) | NA |
| CIRCLING | 520-1 484 (500-1) | 720-1 684 (700-1) | 720-2 684 (700-2) | NA |